



## Cornwall Way

Southport, PR8 3SH

**£25,000 Per Week**

\*\*\*\* AVAILABLE FOR THE ROYAL BIRKDALE OPEN 2026 \*\*\*\*

\*\*\*\*PRICE ON APPLICATION\*\*\*\*

Flexi-Agent are delighted to present this stunning, four bedroomed detached home centrally located in the highly sought after residential location of Ainsdale, a stunning coastal area surrounded by a beautiful Village beaches, glorious sand dunes, nature reserves, whilst still offering fantastic transport links both by road and rail.

This fantastic property briefly comprises: Entrance hallway, spacious living room, open pan kitchen/diner/family room, a downstairs bedroom with en-suite, large pantry and a utility room.

The first floor consists of three double bedrooms and a family bathroom.

Externally the property benefits from ample driveway parking and a sun catching rear garden with a garden room, office, shower room and a spacious garage.

### Viewing

Please contact our Flexi-Agent Southport Lettings Office on 01704 889455 if you wish to arrange a viewing appointment for this property or require further information.



4



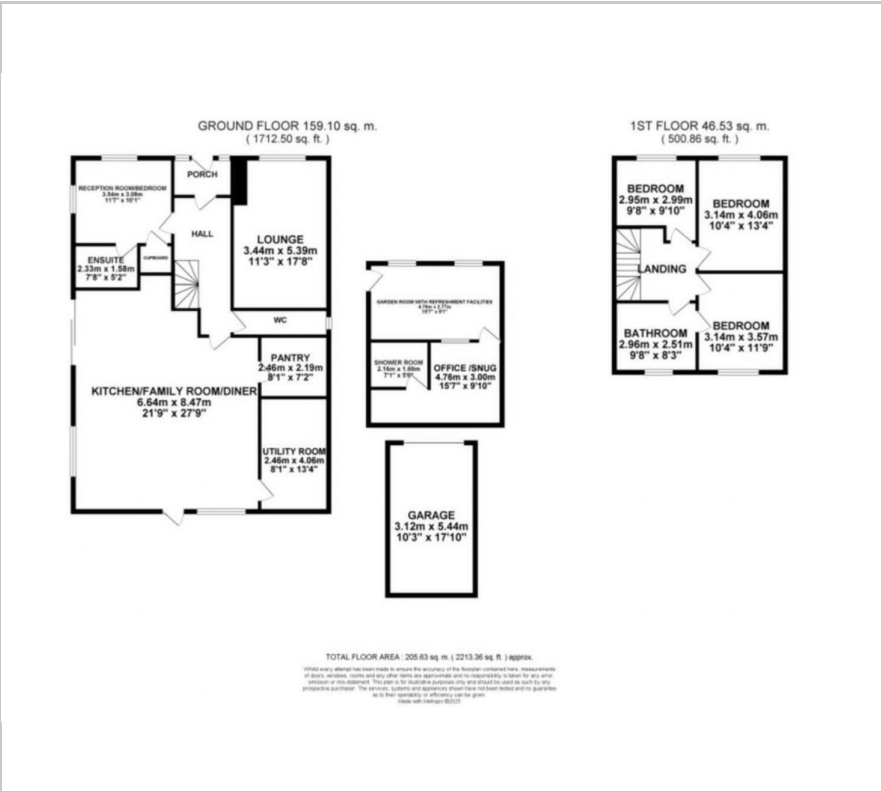
3



3



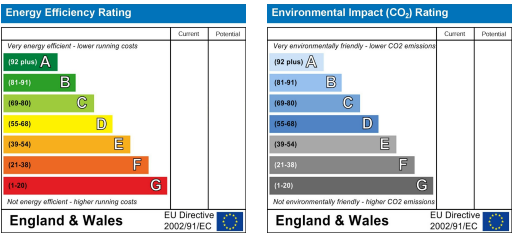
Floor Plan



Area Map



Energy Efficiency Graph



These particulars, whilst believed to be accurate are set out as a general outline only for guidance and do not constitute any part of an offer or contract. Intending purchasers should not rely on them as statements of representation of fact, but must satisfy themselves by inspection or otherwise as to their accuracy. No person in this firm's employment has the authority to make or give any representation or warranty in respect of the property.