



Aveling Drive

Southport, PR9 8FY

£800 Per Month

Flexi-Agent are delighted to welcome this two bedroom, ground floor apartment in a purpose built block to the rental market. Situated in a desirable residential development on the outskirts of the popular village of Banks., it is 4 miles from Southport and is self sufficient, hosting an array of amenities and well established transport links into Southport & Preston.

The property briefly comprises: Entrance Hallway, open plan living/kitchen, two well proportioned bedrooms and a modern bathroom.

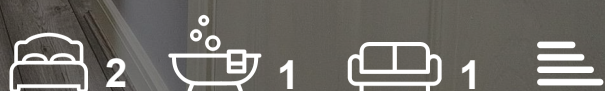
Externally the property benefits from off road parking and communal gardens to the rear.

Council Tax Band B
Deposit £980.76

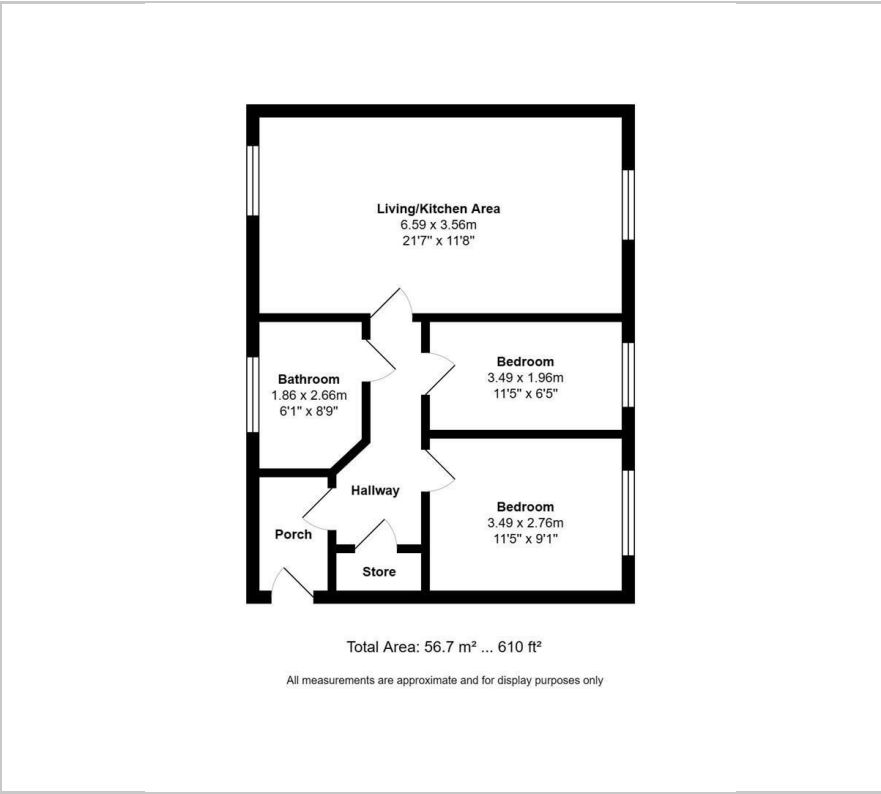
Viewing

Please contact our Flexi-Agent Southport Lettings Office on 01704 889455 if you wish to arrange a viewing appointment for this property or require further information.

- Two bedrms
- Ground floor apartment
- Sought after location
- Off road parking
- Communal gardens
- Modern throughout
- Viewings available on request
- Deposit £923.07
- Council Tax Band B



Floor Plan



Area Map



Energy Efficiency Graph



These particulars, whilst believed to be accurate are set out as a general outline only for guidance and do not constitute any part of an offer or contract. Intending purchasers should not rely on them as statements of representation of fact, but must satisfy themselves by inspection or otherwise as to their accuracy. No person in this firms employment has the authority to make or give any representation or warranty in respect of the property.