



Stanley Avenue

Southport, PR8 4RU

£25,000 Per Week

**** AVAILABLE FOR THE ROYAL BIRKDALE OPEN 2026 ****

****PRICE ON APPLICATION****

Flexi Agent are delighted to bring to market this impressive and spacious six-bedroom detached property, ideally located for the upcoming Golf 2026 tournament. Situated within close proximity to the sought-after Birkdale Village, the home benefits from a wealth of local amenities including popular bars, restaurants, boutique shops, cafés, and excellent transport links via Birkdale train station.

This substantial family home offers generous and versatile living accommodation set over three floors. The ground floor comprises a welcoming entrance hallway, two spacious front lounges—one currently used as a bar/lounge area, a downstairs WC and a versatile home office or dining room. To the rear is a large, modern kitchen fitted with high-specification appliances and bi-folding doors that open onto a sun-catching decked area, ideal for entertaining.

The first floor hosts four generously sized bedrooms, two of which benefit from private en-suite bathrooms. A stylish three-piece family bathroom also features a cleverly designed laundry room for added practicality. A separate utility room completes the ground floor layout.

The second floor provides two further well-proportioned bedrooms along with a separate storage room, making this

- **** AVAILABLE FOR THE ROYAL BIRKDALE OPEN 2026 ****
- ****PRICE ON APPLICATION****
- Six bedroom, Detached, circa 2239 sqft
- 1.3 miles to The Royal Birkdale Golf Club
- Presented to a high specification
- Three reception rooms
- Three bathrooms
- Driveway parking, detached garage and EV Charging port
- Sun catching garden with a home gym
- Viewing is available immediately by appointment

Viewing

Please contact our Flexi-Agent Southport Lettings Office on 01704 889455 if you wish to arrange a viewing appointment for this property or require further information.



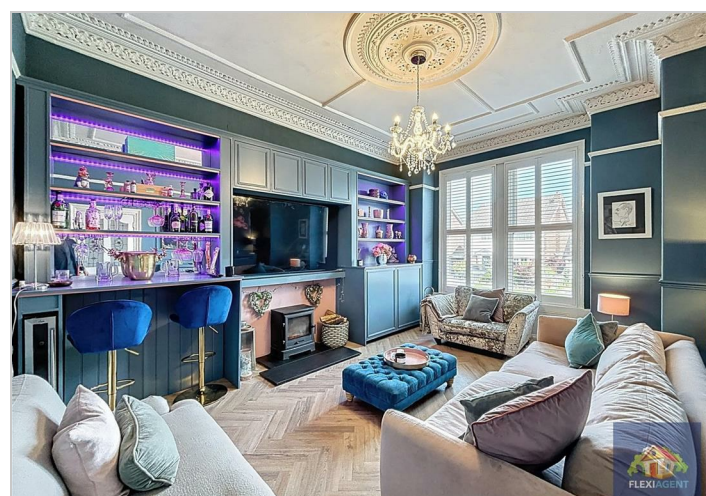
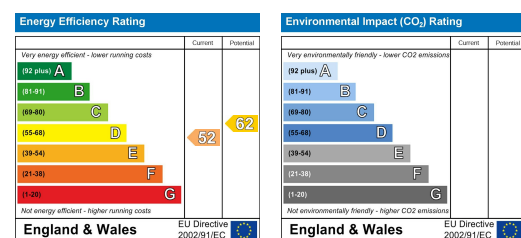
Floor Plan



Area Map



Energy Efficiency Graph



These particulars, whilst believed to be accurate are set out as a general outline only for guidance and do not constitute any part of an offer or contract. Intending purchasers should not rely on them as statements of representation of fact, but must satisfy themselves by inspection or otherwise as to their accuracy. No person in this firm's employment has the authority to make or give any representation or warranty in respect of the property.

18-20 Coronation Walk, Southport, Merseyside, PR8 1RE
01704 889455 lettings@flexi-agent.co.uk <https://www.flexi-agent.co.uk>