



**Flat 1 Eaton Road, Margate, CT9 1XA**

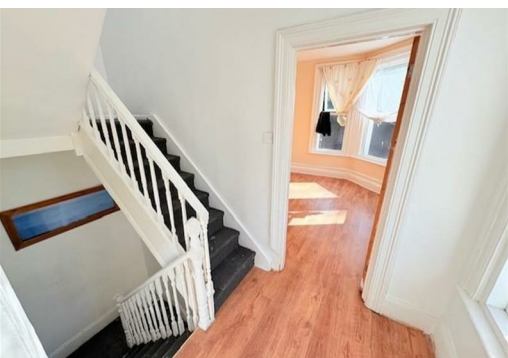
**£650 Per calendar month**

**1 BEDROOM APARTMENT NEXT TO DREAMLAND AND MARGATES MAIN SANDS.**

Being so close to "Dreamland" theme park and the sea front only a short stroll away this location is prime for A FAMILY who are looking to live close to the town.

The apartment is a large 1 bedroom apartment with parking for 1 car and easy access to the train station for commuting and traveling to and from London. We welcome your call for viewings.

For your chance to view please call Lovetts of Ramsgate on 01843 570305



Flat 1 Eaton Road, Margate, CT9 1XA

