

www.jeffreygross.co.uk

CARDIFF

VALE

CAERPHILLY

BRISTOL





Comments by Ms Ashton Jones

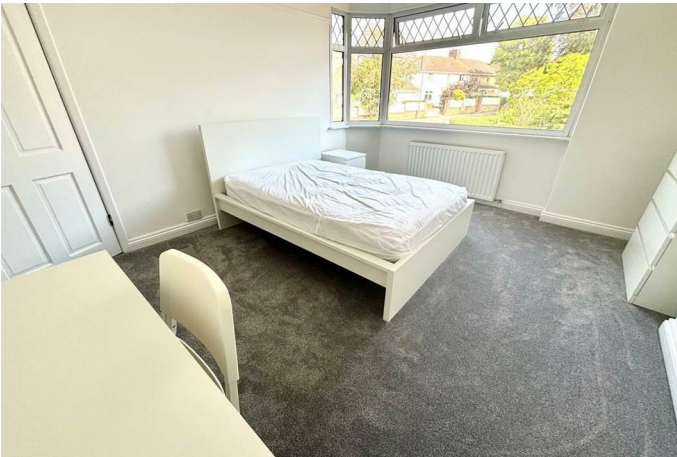


Property Specialist
Ms Ashton Jones
Branch manager

a.jones@thepropertyoutlet.com

Comments by the Homeowner





Braemar Crescent

Filton Park, Bristol, BS7 0TD

PCM

£3,950 PCM



7 Bedroom(s)



3 Bathroom(s)



1689.93 sq ft



Contact our
Property Outlet Branch
0117 935 4565

* AVAILABLE 30.06.2026 *

WELL PRESENTED FURNISHED SIX/SEVEN DOUBLE BEDROOM SEMI DETACHED HOUSE! The Property Outlet are keen to offer to the 2025/2026 student rental market this fabulous home. The accommodation comprises ENTRANCE HALL, SHOWER ROOM & W/C, FITTED KITCHEN/DINING ROOM & TWO DOUBLE BEDROOMS. To the first floor there are a further FOUR DOUBLE BEDROOMS & a BATH/SHOWER ROOM & W/C. The second floor consists of a LARGE MASTER BEDROOM with an EN/SUITE SHOWER ROOM & W/C. The property is FURNISHED with WHITE GOODS THAT INCLUDE, WASHING MACHINE, DISHWASHER, 2X FRIDGE/FREEZERS, MICROWAVE & GAS HOB/ELECTRIC OVEN. Other benefits include GAS CENTRAL HEATING, DOUBLE GLAZING & OFF ROAD PARKING.

Holding Deposit £911.53



CARDIFF

VALE

CAERPHILLY

BRISTOL

www.jeffreygross.co.uk





Energy Efficiency Rating		
	Current	Potential
Very energy efficient - lower running costs		
(92 plus) A		82
(81-91) B		
(69-80) C		
(55-68) D	63	
(39-54) E		
(21-38) F		
(1-20) G		
Not energy efficient - higher running costs		
England & Wales		EU Directive 2002/91/EC

