

[www.jeffreygross.co.uk](http://www.jeffreygross.co.uk)

CARDIFF

VALE

CAERPHILLY

BRISTOL



*Filton Avenue*

HORFIELD





Comments by Ms Ashton Jones



**Property Specialist**  
**Ms Ashton Jones**  
Branch manager

[a.jones@thepropertyoutlet.com](mailto:a.jones@thepropertyoutlet.com)

Comments by the Homeowner





# Filton Avenue

Horfield, Bristol, BS7 0QF

PCM

£2,500 PCM



4 Bedroom(s)



1 Bathroom(s)



1011.81 sq ft



Contact our  
*Property Outlet Branch*  
0117 935 4565

\* AVAILABLE 01.08.2026 \*

FOUR BEDROOM FURNISHED PROPERTY! The Property Outlet are delighted to offer to the rental market this four bedroom end terraced house that is in an ideal location. The accommodation comprises ENTRANCE HALL, LIVING ROOM, DINING ROOM (BEDROOM), and KITCHEN. To the first floor there are THREE BEDROOMS and a BATH/SHOWER ROOM & WC. WHITE GOODS include an ELECTRIC HOB/OVEN, WASHING MACHINE & a FRIDGE/FREEZER. Benefits include GAS CENTRAL HEATING & DOUBLE GLAZING. Outside there are FRONT & REAR GARDENS. Good location for the MOD & LOCAL AMENITIES & BUS STOPS.

Holding Deposit £576.92







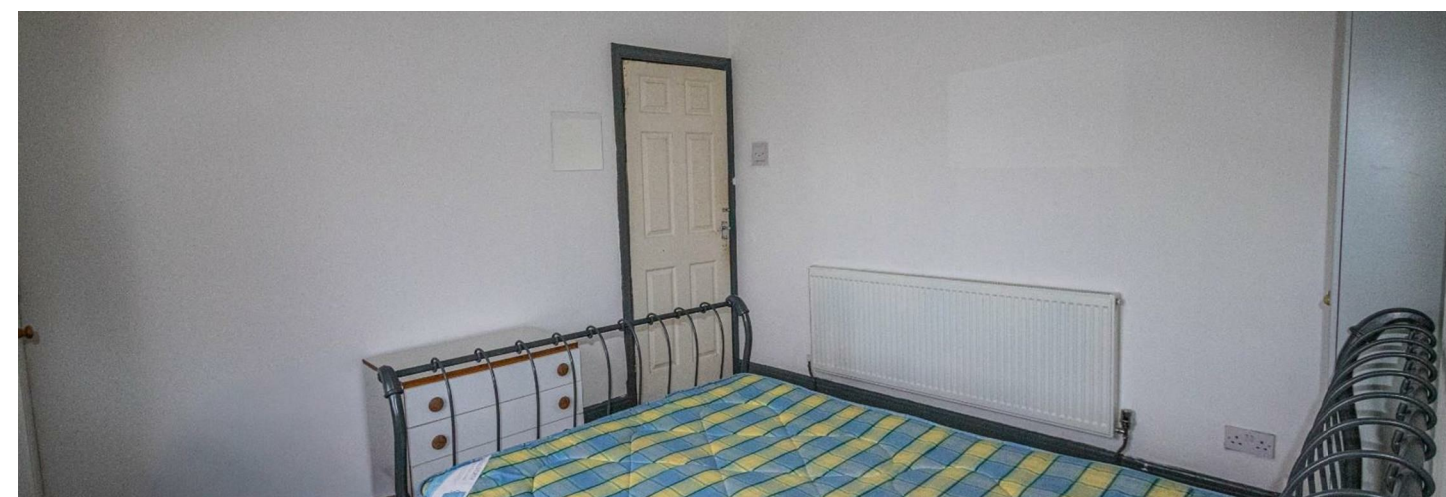
CARDIFF

VALE

CAERPHILLY

BRISTOL

[www.jeffreygross.co.uk](http://www.jeffreygross.co.uk)







Energy Efficiency Rating		
	Current	Potential
Very energy efficient - lower running costs		
(92 plus) A		77
(81-91) B		
(69-80) C		
(55-68) D	59	
(39-54) E		
(21-38) F		
(1-20) G		
Not energy efficient - higher running costs		
England & Wales		EU Directive 2002/91/EC

