

[www.knights.uk.com](http://www.knights.uk.com)

CARDIFF

VALE

CAERPHILLY

BRISTOL







Comments by Mrs Cassie Deans - Shumack

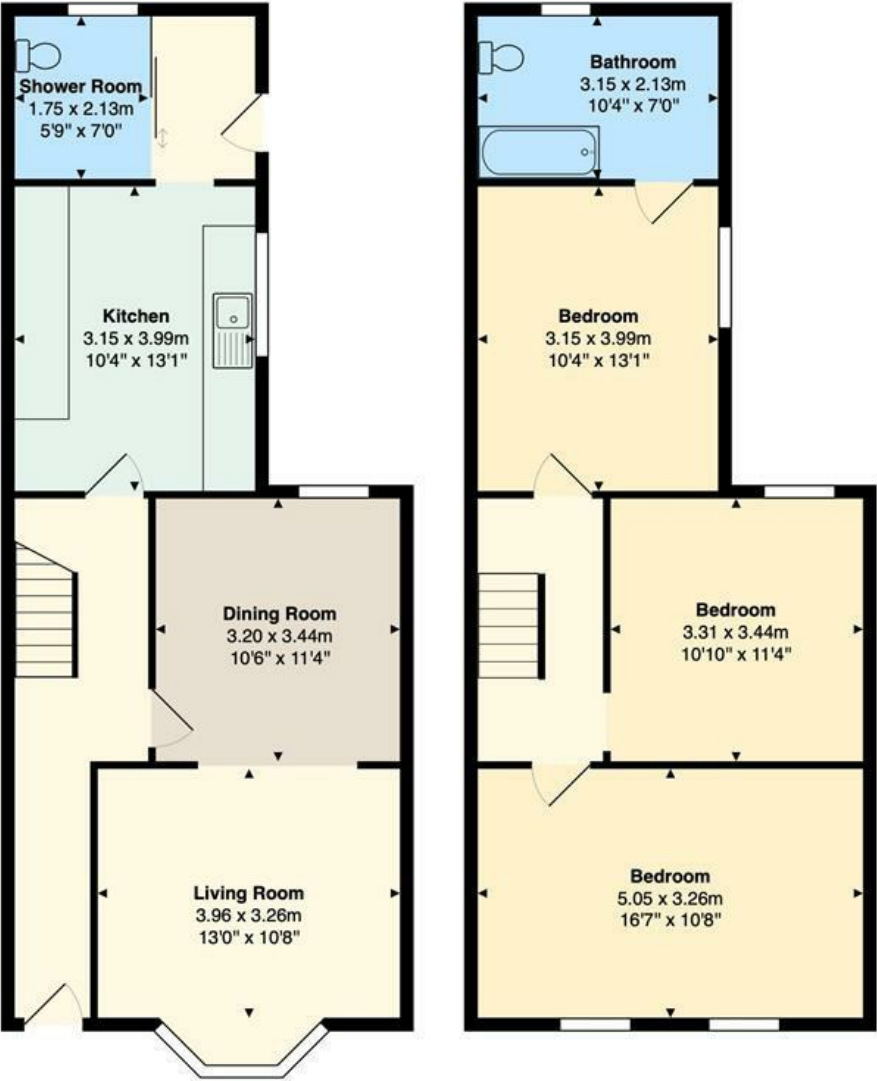


**Property Specialist**  
**Mrs Cassie Deans - Shumack**  
Senior valuer  
  
cassie@knights.uk.com

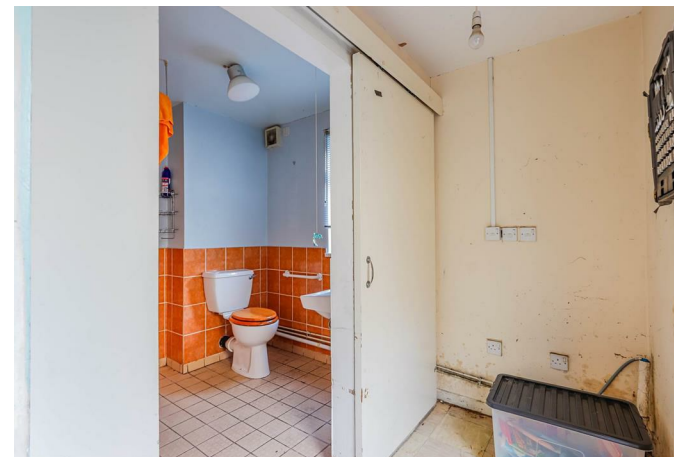


Comments by the Homeowner

St Mary's Avenue, Barry, CF63 4LR



Total Area: 109.3 m<sup>2</sup> ... 1177 ft<sup>2</sup>  
All measurements are approximate and for display purposes only



# St. Marys Avenue

, Barry, CF63 4LR

Guide Price

£185,000



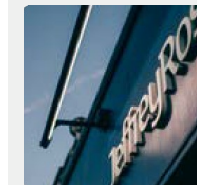
3 Bedroom(s)



1 Bathroom(s)



sq ft



Contact our  
***Knights Barry Branch***

01446 700222

Situated in a prime location, this property is just a stone's throw away from the town centre, offering a variety of shops, cafes, and essential services. Residents will appreciate the close proximity to local amenities, making daily errands a breeze. Additionally, excellent transport links ensure easy access to surrounding areas, making commuting straightforward and convenient.

A must-see for anyone looking to settle in Barry. Whether you are a first-time buyer looking to renovate or seeking a rental opportunity, this property is sure to meet your needs. Do not miss the chance to explore all that this lovely house has to offer.

OFFERED FOR SALE WITH NO ONWARD CHAIN





HALLWAY 3'03" (0.99m )

LIVING ROOM 13'0" x 10'08" / 12'01"  
(3.96m x 3.25m / 3.68m )

DINING ROOM 11'03" x 10'06" (3.43m x  
3.20m )

KITCHEN 13'01" 10'04" (3.99m 3.15m )

REAR LOBBY 7'0" x 4'04" (2.13m x 1.32m )

BEDROOM ONE 17'02" x 10'07" (5.23m x  
3.23m )

BEDROOM TWO 11'04" x 10'10" (3.45m x  
3.30m )

BEDROOM THREE 13'10" x 10'04" (4.22m x  
3.15m )

BATHROOM 7'0" x 11'01" (2.13m x 3.38m )

C A R D I F F

V A L E

C A E R P H I L L Y

B R I S T O L









Energy Efficiency Rating		
	Current	Potential
Very energy efficient - lower running costs		
(92 plus) A		
(81-91) B		
(69-80) C		
(55-68) D		
(39-54) E		
(21-38) F		
(1-20) G		
Not energy efficient - higher running costs		
England & Wales		EU Directive 2002/91/EC

