



RHODFA CAMBO

WATERFRONT







# RHODFA CAMBO

WATERFRONT, CF62 5BS

ASKING PRICE

£375,000 -

FREEHOLD



4 Bedroom(s)



3 Bathroom(s)



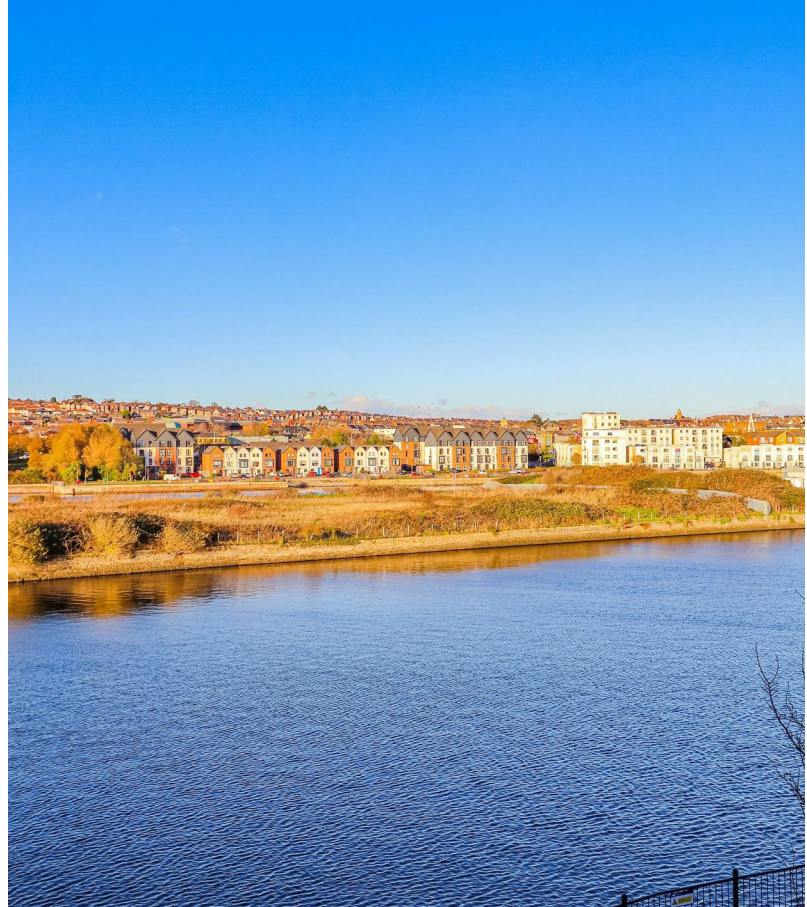
1579.00 sq ft

This Havisham Special, set within the highly sought-after waterfront estate of Rhodfa Cambo, Barry, is a beautifully presented home offering the perfect balance of comfort, style and space. Featuring four generously sized bedrooms, the master suite includes a walk-in wardrobe and a private en suite, providing a luxurious and practical retreat.

A further bedroom on the top floor enjoys its own en suite along with impressive water views, making it an ideal guest room or a peaceful place to unwind. The bright and spacious reception room is flooded with natural light, creating a warm and inviting atmosphere. Three well-appointed bathrooms ensure convenience for all residents, while the versatile fourth bedroom can easily function as a study or guest room to suit your lifestyle.

Outside, the property benefits from valuable off-road parking and a private rear garden, offering a peaceful retreat for sunny afternoons or social gatherings. The charming front porch provides the perfect spot to relax and take in the picturesque waterfront scenery. Located within walking distance of local shops, schools and public transport, this home ensures everyday amenities are always close at hand. Barry's beautiful beaches are also just a short stroll away, offering endless leisure opportunities.

Move-in ready and immaculately maintained, this exceptional Havisham Special on Rhodfa Cambo presents a rare opportunity to enjoy tranquil waterfront living in one of Barry's most desirable locations.



84 High Street  
Barry  
Vale of Glamorgan  
CF62 7DX  
TEL: 01446 700222  
EMAIL: sales@knights.uk.com











**KITCHEN**

1.85m' x 3.05m (6'1' x 10'0" )

**FAMILY/DINING ROOM**

3.94m x 4.83m (12'11" x 15'10" )

**BEDROOM FOUR/STUDY**

1.85m x 2.74m (6'1" x 9'0" )

**W/C**

0.81m x 1.65m (2'8" x 5'5" )

**LIVING ROOM**

5.46m x 3.02m (17'11" x 9'11" )

**BEDROOM ONE**

5.46m x 3.10m (17'11" x 10'02" )

**EN-SUITE**

2.67m x 1.52m (8'09" x 5'0" )

**DRESSING ROOM**

2.67m x 1.37m (8'09" x 4'06" )

**BEDROOM TWO**

5.46m x 3.30m (17'11" x 10'10" )

**EN-SUITE**

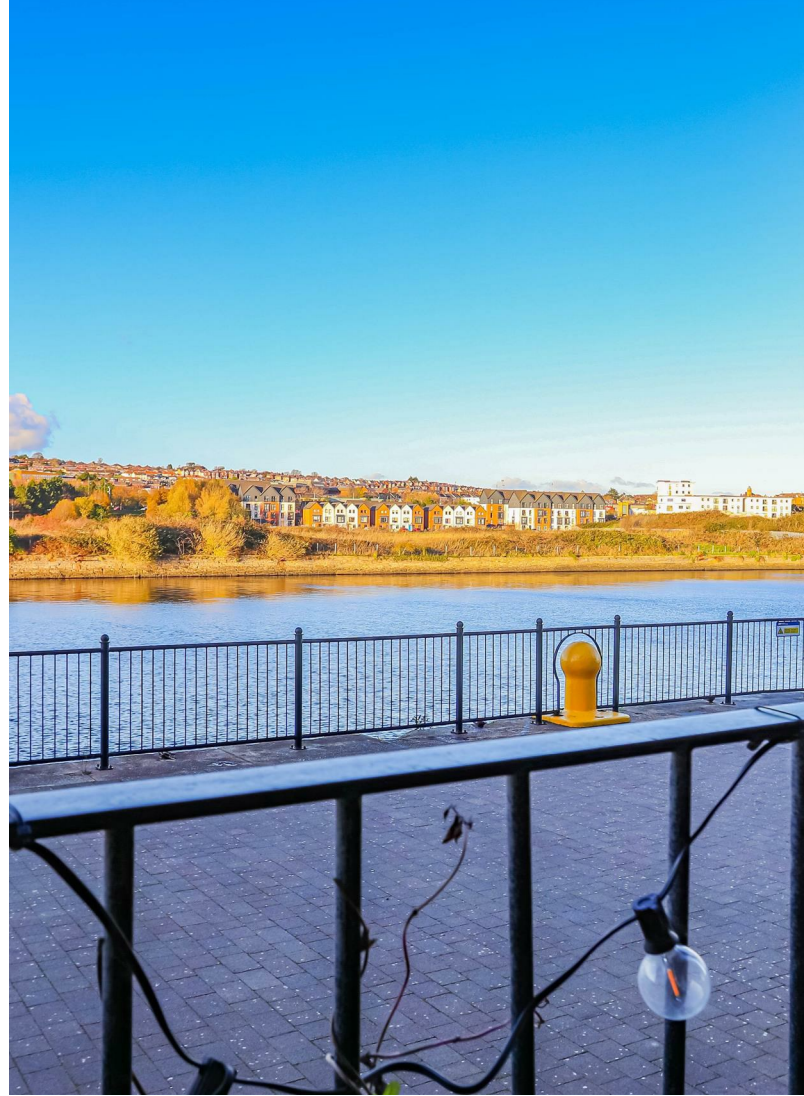
2.41m x 1.42m (7'11" x 4'08" )

**BEDROOM THREE**

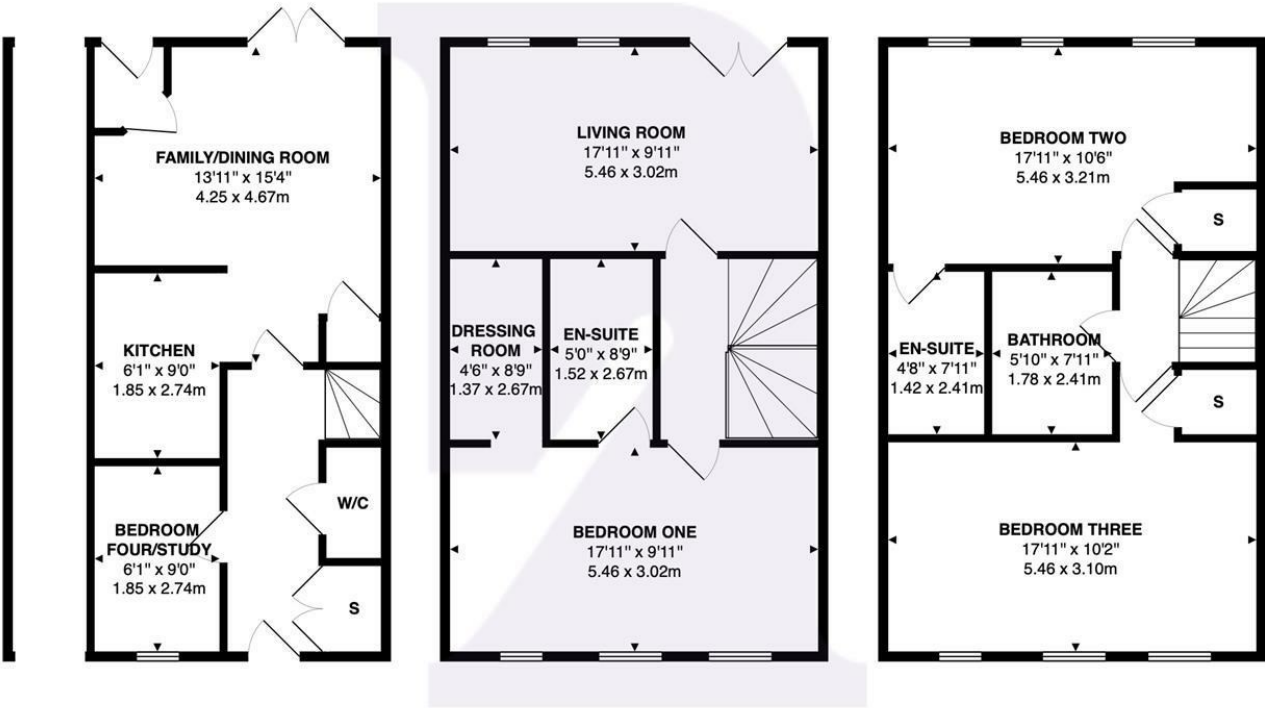
5.46m x 3.10m (17'11" x 10'02" )

**FAMILY BATHROOM**

2.41m x 1.78m (7'11" x 5'10" )




Rhodfa Cambo, Barry, CF62 5BS



Total Area: 1579 ft² ... 146.7 m²  
All measurements are approximate and for display purposes only



Energy Efficiency Rating		
	Current	Potential
Very energy efficient - lower running costs		
(92 plus) <b>A</b>	<b>86</b>	<b>95</b>
(81-91) <b>B</b>		
(69-80) <b>C</b>		
(55-68) <b>D</b>		
(39-54) <b>E</b>		
(21-38) <b>F</b>		
(1-20) <b>G</b>		
Not energy efficient - higher running costs		
<b>England &amp; Wales</b>	EU Directive 2002/91/EC	

BARRY'S HOME FOR  
STYLISH SALES  
& LETTINGS

KNIGHTS 