



[www.knights.uk.com](http://www.knights.uk.com)

CARDIFF

VALE

CAERPHILLY

BRISTOL



*Maple Close*

EAST END



Comments by Mrs Cassie Deans - Shumack



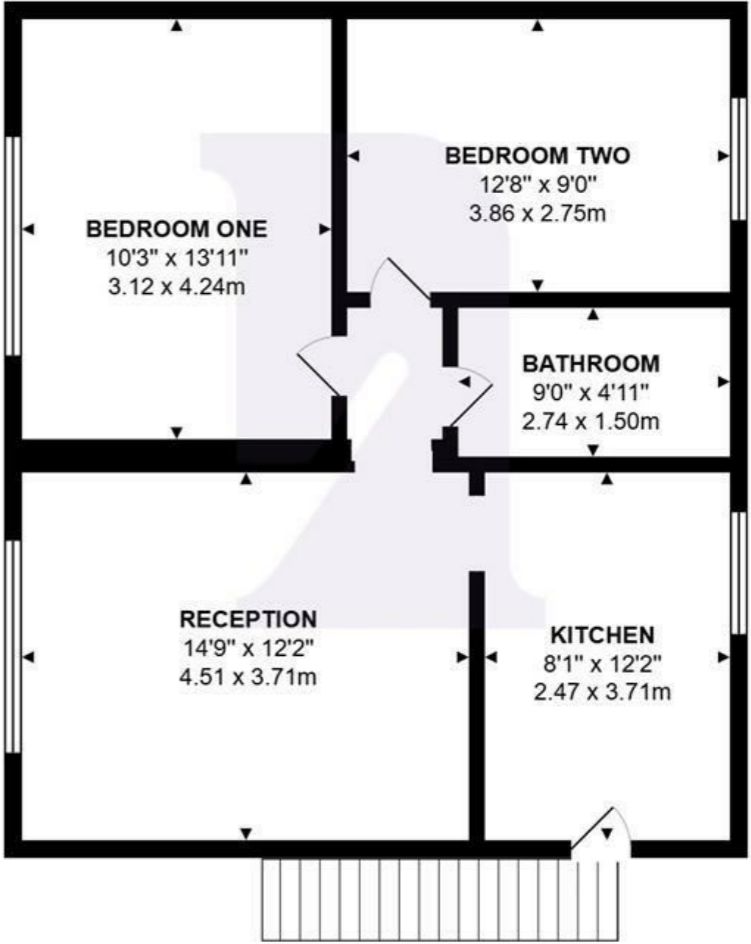
**Property Specialist**

Mrs Cassie Deans - Shumack

Senior valuer

[cassie@knights.uk.com](mailto:cassie@knights.uk.com)

Maple Close, Barry, CF62 9BX



Total Area: 621 ft² ... 57.7 m²

All measurements are approximate  
and for display purposes only

Comments by the Homeowner





# Maple Close

East End, Barry, CF62 9BX

Offers Over

£125,000



2 Bedroom(s)



1 Bathroom(s)



645.83 sq ft



Contact our  
**Knights Barry Branch**  
01446 700222

Welcome to this charming maisonette located on Maple Close in Barry. This delightful property offers a comfortable living, making it an ideal choice for individuals or small families seeking a modern home.

Upon entering, you will find a well-proportioned reception room that provides a warm and inviting atmosphere, perfect for relaxation or entertaining guests. The maisonette boasts two spacious double bedrooms, ensuring ample room for rest and personal space. The bathroom is conveniently located, catering to the needs of the household.

One of the standout features of this property is the lovely garden, which offers a private outdoor space for enjoying the fresh air, gardening, or simply unwinding after a long day.

In summary, this two-bedroom maisonette on Maple Close presents an excellent opportunity for anyone looking to settle in a welcoming community. With its combination of space, outdoor enjoyment, and convenient parking, this property is not to be missed.



KITCHEN 12'02 x 7'09 (3.71m x 2.36m)

RECEPTION 12'02 x 14'09 (3.71m x 4.50m )

BATHROOM 9'00 x 4'11 (2.74m x 1.50m )

BEDROOM ONE 13'11 x 10'03 (4.24m x 3.12m)

BEDROOM TWO 12'05 x 9'05 (3.78m x 2.87m )

C A R D I F F


V A L E

C A E R P H I L L Y

B R I S T O L





| Energy Efficiency Rating                    |         |   |
|---|---------|---|
|   | Current | Potential   |
| Very energy efficient - lower running costs |         |   |
| (92 plus) A                                 |         |   |
| (81-91) B                                   |         |   |
| (69-80) C                                   | 75      | 76  |
| (55-68) D                                   |         |   |
| (39-54) E                                   |         |   |
| (21-38) F                                   |         |   |
| (1-20) G                                    |         |   |
| Not energy efficient - higher running costs |         |   |
| England & Wales                             |         | EU Directive 2002/91/EC  |