



THE PARADE

BARRY



THE PARADE

BARRY, CF62 6SD

GUIDE PRICE

£610,000 -

FREEHOLD



4 Bedroom(s)



2 Bathroom(s)



2275.00 sq ft

Located on the highly sought-after Parade in Barry, this beautifully renovated home perfectly combines modern comfort with breathtaking coastal views. Offering four generous double bedrooms, it's an ideal choice for families or anyone in need of extra space.

The property features three spacious reception rooms, providing versatile areas for both relaxation and entertaining. A true highlight of this home is the stunning outlook over the old harbour, where panoramic sea views create a serene and picturesque setting.

At the heart of the home is a sleek, open-plan kitchen, dining, and living space, thoughtfully designed for modern living. Whether hosting guests or enjoying a quiet evening in, this area is both functional and stylish, and ready for immediate occupancy.

Two well-appointed bathrooms, plus two W/C, add to the home's practicality, while the front and rear gardens offer well-maintained outdoor spaces to relax or garden. A rear garage provides secure parking and additional storage.

Set on one of Barry's most desirable streets, this exceptional home offers a rare blend of contemporary living, coastal charm, and everyday convenience. A truly unique opportunity not to be missed.



84 High Street
Barry
Vale of Glamorgan
CF62 7DX
TEL: 01446 700222
EMAIL: sales@knights.uk.com





KITCHEN

5.69m x 4.34m (18'08" x 14'03")

LIVING ROOM

5.66m x 5.03m (18'07" x 16'06")

RECEPTION ROOM TWO

3.33m x 3.51m (10'11" x 11'06")

W/C

1.68m x 0.84m (5'06" x 2'09")

REAR LOBBY

3.48m x 1.40m (11'05" x 4'07")

UTILITY ROOM

3.45m x 2.06m (11'04" x 6'09")

BEDROOM ONE

5.74m x 4.24m (window 2.90m x 1.30m)
(18'10" x 13'11" (window 9'06" x 4'03"))

BEDROOM TWO

4.01m x 3.78m (13'02" x 12'05")

EN-SUITE

2.26m x 1.70m (7'05" x 5'07")

BATHROOM

3.58m x 2.59m x 2.03m (11'09" x 8'06" x
6'08")

BEDROOM THREE

5.74m x 5.61m (18'10" x 18'05")

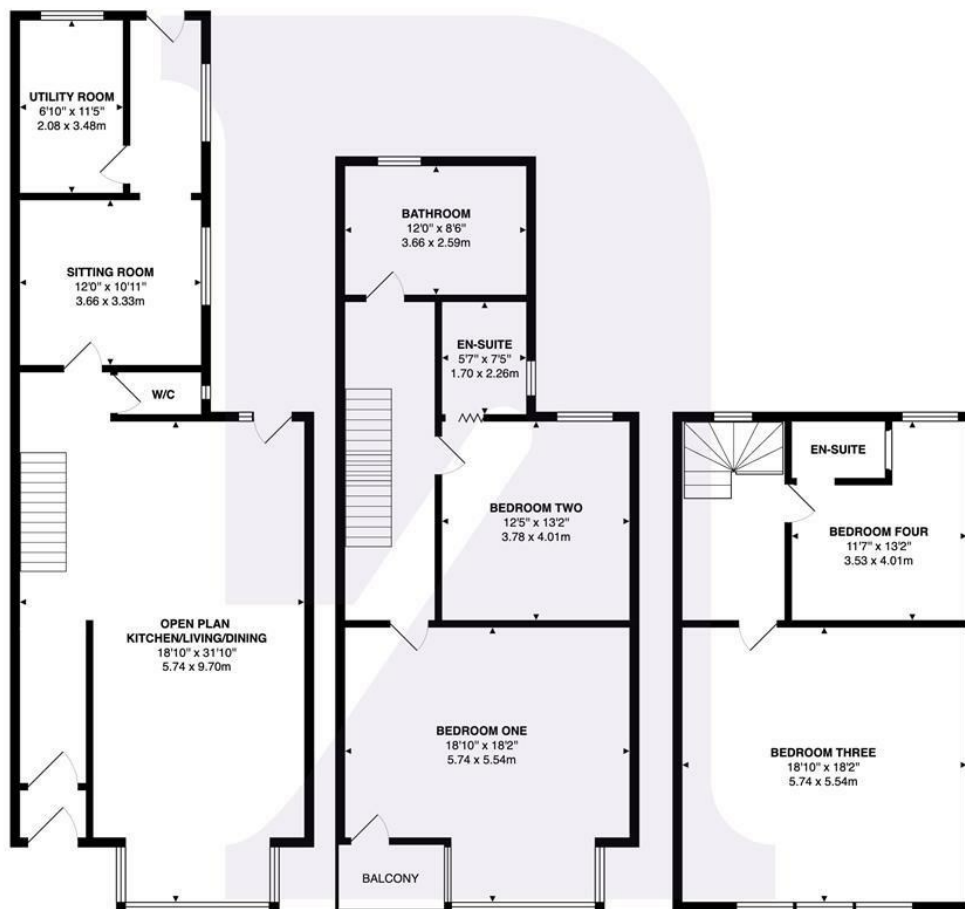
BEDROOM FOUR

3.53m x 4.01m (11'07" x 13'02")

EN-SUITE

1.14m x 1.88m (3'09" x 6'02")


The Parade, Barry, CF62 6SD



Total Area: 2275 ft² ... 211.4 m²

All measurements are approximate and for display purposes only

Energy Efficiency Rating

	Current	Potential
Very energy efficient - lower running costs		
(92 plus) A		84
(81-91) B		
(69-80) C		
(55-68) D	65	
(39-54) E		
(21-38) F		
(1-20) G		
Not energy efficient - higher running costs		
England & Wales		EU Directive 2002/91/EC 

BARRY'S HOME FOR
STYLISH SALES
& LETTINGS



KNIGHTS