



A F A L S U R

B A R R Y

# AFAL SUR

, C F 63 1 F X

OFFERS IN THE REGION OF  
**£385,000**

FREEHOLD



3 Bed



2 Bath



1863.00 sq ft

Situated in Afal Sur, Barry, this delightful house offers a perfect blend of modern living and stunning natural beauty. With three spacious double bedrooms and an additional study, the property is designed to accommodate a variety of lifestyles, making it ideal for families or those seeking dual living arrangements.

You are greeted by two inviting reception rooms that provide ample space for relaxation and entertaining. The impressive living area boasts far-reaching sea views, allowing you to enjoy the picturesque scenery from the comfort of your home. The modern layout enhances the flow of the space, creating a warm and welcoming atmosphere.

The landscaped garden is a true highlight, benefiting from all-day sun, making it a perfect spot for outdoor gatherings or simply enjoying a quiet moment.

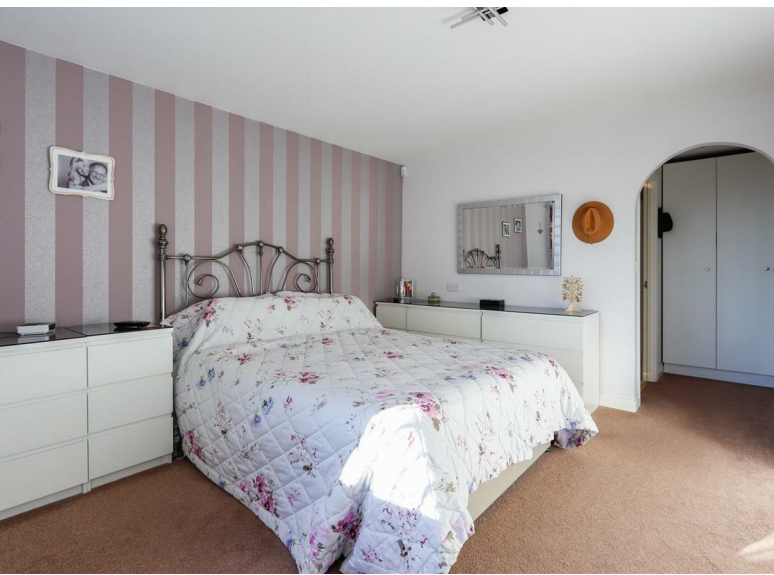
Additionally, the integral garage offers valuable storage options and presents the exciting potential for conversion into another living space or bedroom, should you desire. The property also benefits from solar panels. With no chain involved, this property is ready for you to move in and make it your own.

In summary, this house in Afal Sur is a rare find, combining spacious living, stunning views, and a beautiful garden, all within a desirable location. Don't miss the opportunity to make this wonderful property your new home.

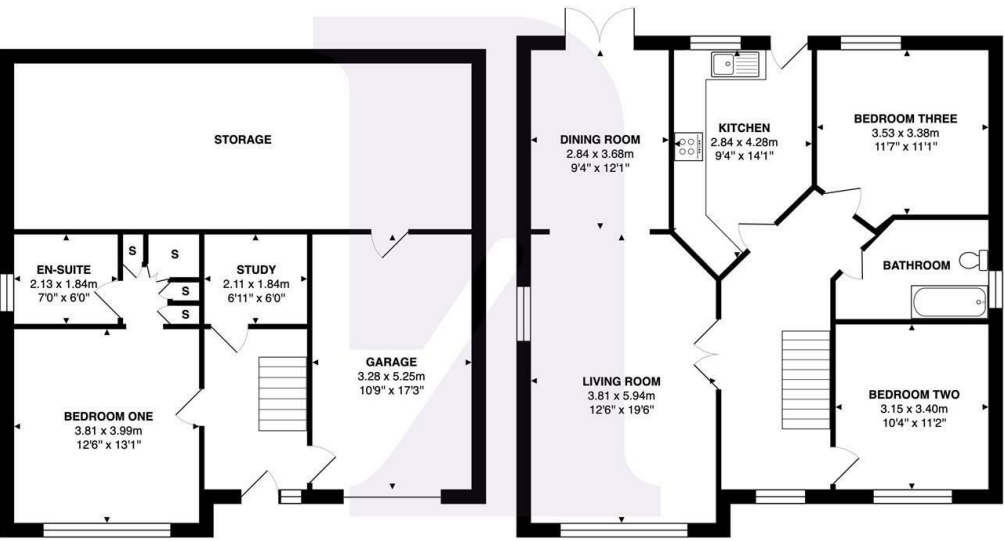




Energy Efficiency Rating		
	Current	Potential
Very energy efficient - lower running costs		
(92 plus) <b>A</b>		
(81-91) <b>B</b>	84	85
(69-80) <b>C</b>		
(55-68) <b>D</b>		
(39-54) <b>E</b>		
(21-38) <b>F</b>		
(1-20) <b>G</b>		
Not energy efficient - higher running costs		
England & Wales		EU Directive 2002/91/EC



Afal Sur, Barry, CF63 1FX



Total Area: 173.1 m² ... 1863 ft²  
All measurements are approximate and for display purposes only

BARRY & THE VALE'S HOME FOR

STYLISH SALES  
& LETTINGS



KNIGHTS