



Your Logo



## Aldwych Road, Liverpool, L12 8QL

Offers In Region Of £375,000

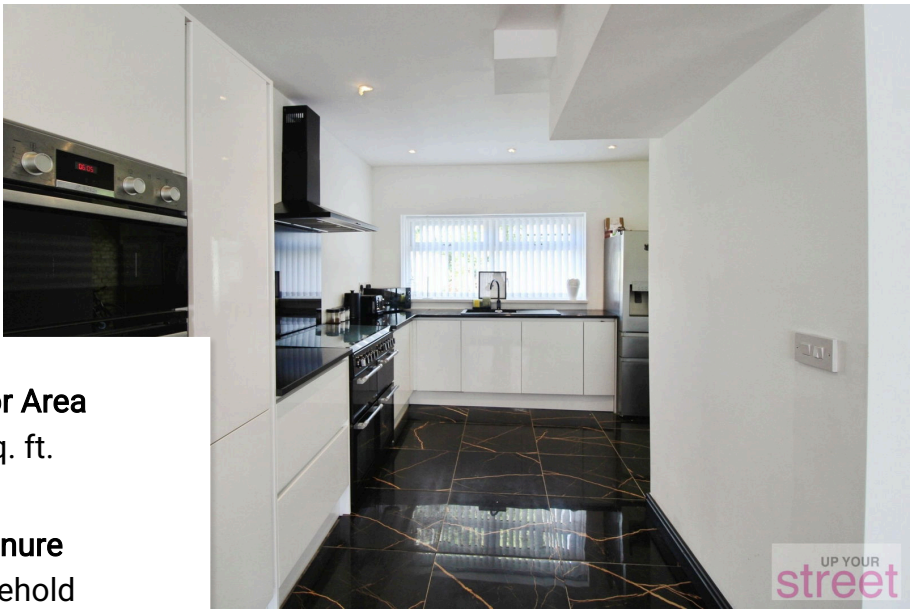
4 2



Welcome to Aldwych Road, Liverpool (L12 8QL) – a beautifully extended 4-bedroom semi-detached home that blends modern style with generous living space, all set in one of the area's most desirable neighbourhoods.

Step inside via a welcoming porch and into a stunning open-plan layout, where a spacious lounge flows effortlessly into a sleek, contemporary kitchen. Whether you're hosting guests or enjoying quiet evenings in, the heart of this home is built for modern family life.



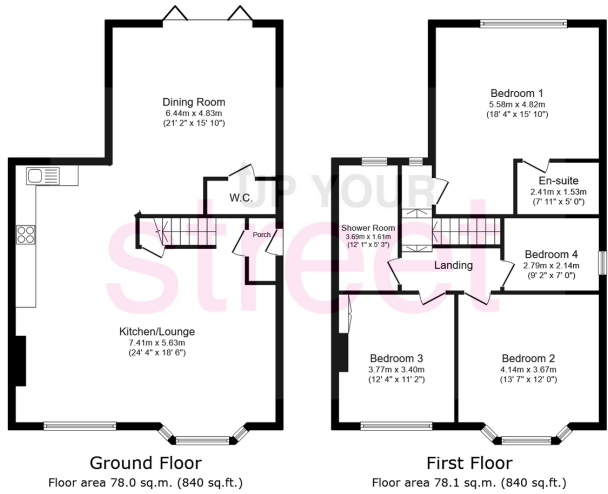


**Floor Area**  
sq. ft.

**Tenure**  
Freehold

**Service Charge**  
£0 per annum

**Ground Rent**  
£0 per annum



Total floor area: 156.1 sq.m. (1,680 sq.ft.)  
This floor plan is for illustrative purposes only. It is not drawn to scale. Any measurements, floor areas (including any total floor area), openings and orientations are approximate. No details are guaranteed, they cannot be relied upon for any purpose and do not form any part of any agreement. No liability is taken for any error, omission or misstatement. A party must rely upon its own inspection(s). Powered by www.propertybox.io

