



5 Moorehead Way, London, SE3 9EW

£2,250 pcm

arley
property

Bedrooms: 2 | **Bathrooms:** 2 | **Receptions:** 1

Date First Available: 16/12/2025

Deposit: £2,653

- Two double bedrooms
- Two bathrooms
- Private balcony
- Residents gym, swimming pool and concierge
- Unfurnished
- Allocated parking at an additional cost

Stylish Two Bedroom Apartment in the Heart of Kidbrooke Village

This spacious and stylish two double bedroom apartment is set within the highly sought-after Kidbrooke Village development. The property benefits from a private balcony, secure parking at an additional cost, 24-hour concierge, and exclusive access to the residents-only gym.

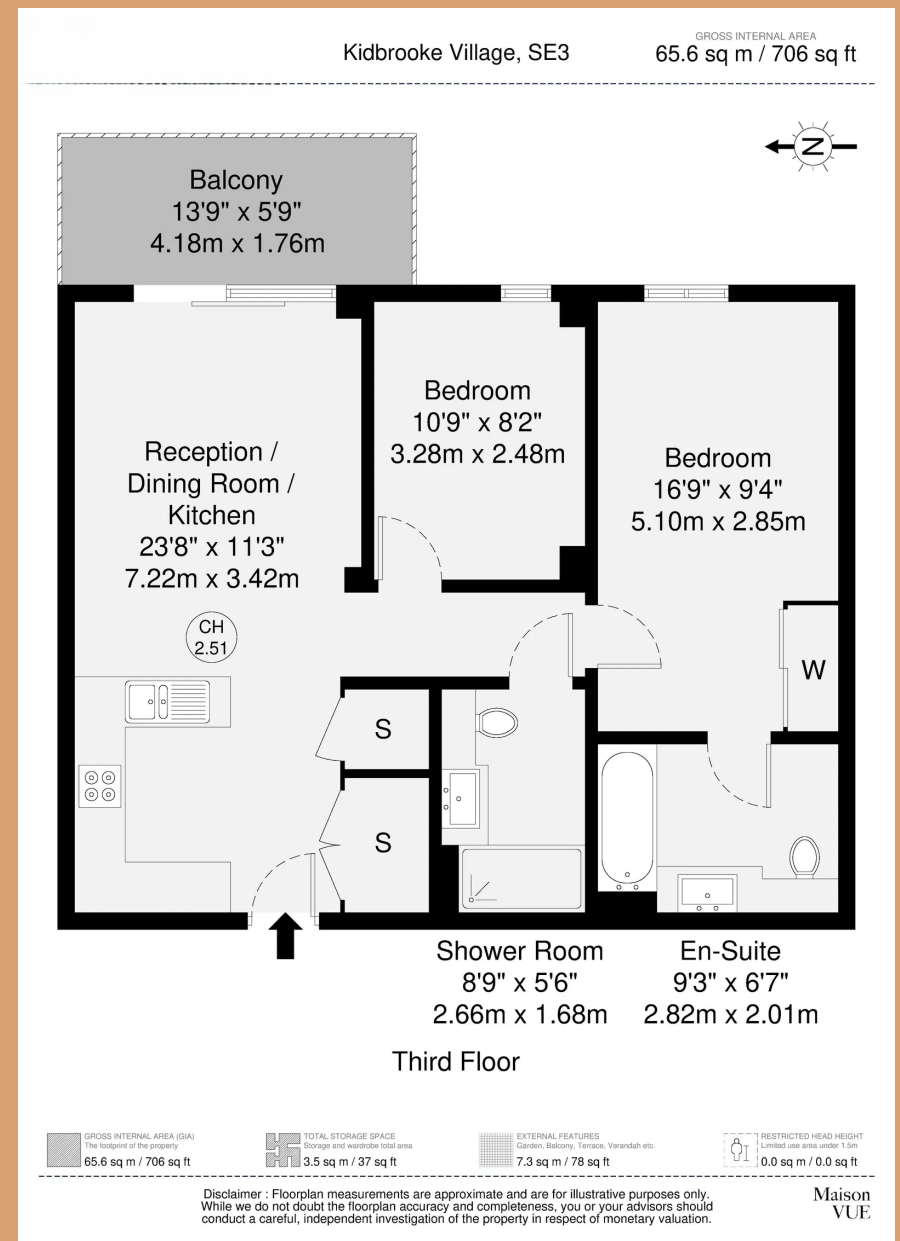
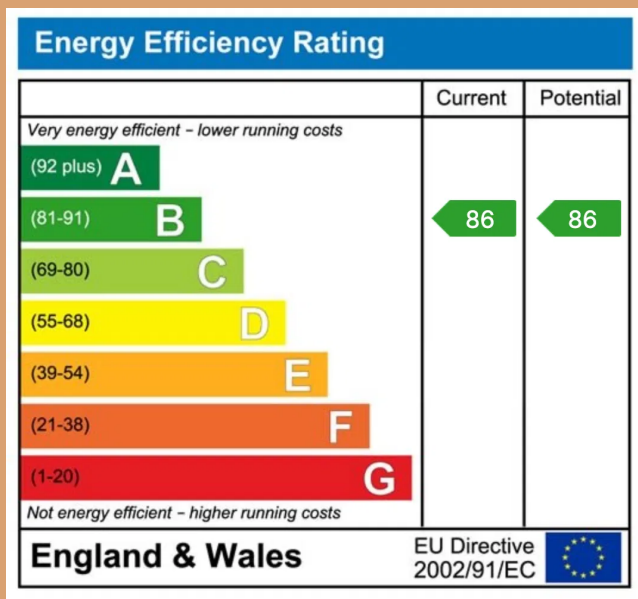
Nestled within 86 acres of beautifully landscaped open space, Kidbrooke Village offers a peaceful retreat in London Zone 3, within the Royal Borough of Greenwich. From expansive parks and wildflower meadows to serene wetlands and private gardens, this award-winning development promotes wellbeing and an active lifestyle.

The Village Centre provides everything you need right on your doorstep, including a Sainsbury's Local, PureGym, The Depot Pub & Dining, a dentist, doctor's surgery, and Kidbrooke Station—offering direct services to London Bridge in just 17 minutes*.

Contact us today to arrange a viewing and secure your place in Kidbrooke Village.







James Marshall

James@arleyproperty.com
07515 448 385

www.arleyproperty.com

arley
property