



**ASHFORD
& MOULT**
ESTATE AGENTS

ASKING PRICE

£375,000

Longue Drive

Nottingham, NG14 6QE

PROPERTY SUMMARY

Situated in the ever-popular village of Calverton, this impressive four-bedroom detached home offers generous space, thoughtful design and everything a modern family could need. From the driveway for two vehicles to the integral garage, the property immediately delivers practically without compromising on style.

Once inside, the ground floor opens into a welcoming hallway that leads to the heart of the home — a spacious kitchen/diner that provides the perfect backdrop for family meals and everyday gatherings. A separate utility room offers extra convenience with direct access to the rear garden, and there is also a downstairs WC and internal door to the garage.

The main lounge is a cosy retreat for unwinding in the evenings, while the adjoining dining room — complete with French doors — allows natural light to pour in and creates an effortless transition out to the garden. Ideal for entertaining or keeping an eye on children playing outdoors, this layout blends comfort and function beautifully.

Upstairs, the property continues to impress with four well-proportioned bedrooms. The master bedroom enjoys the benefit of its own ensuite,

4



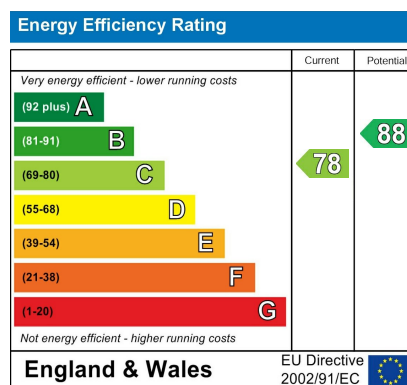
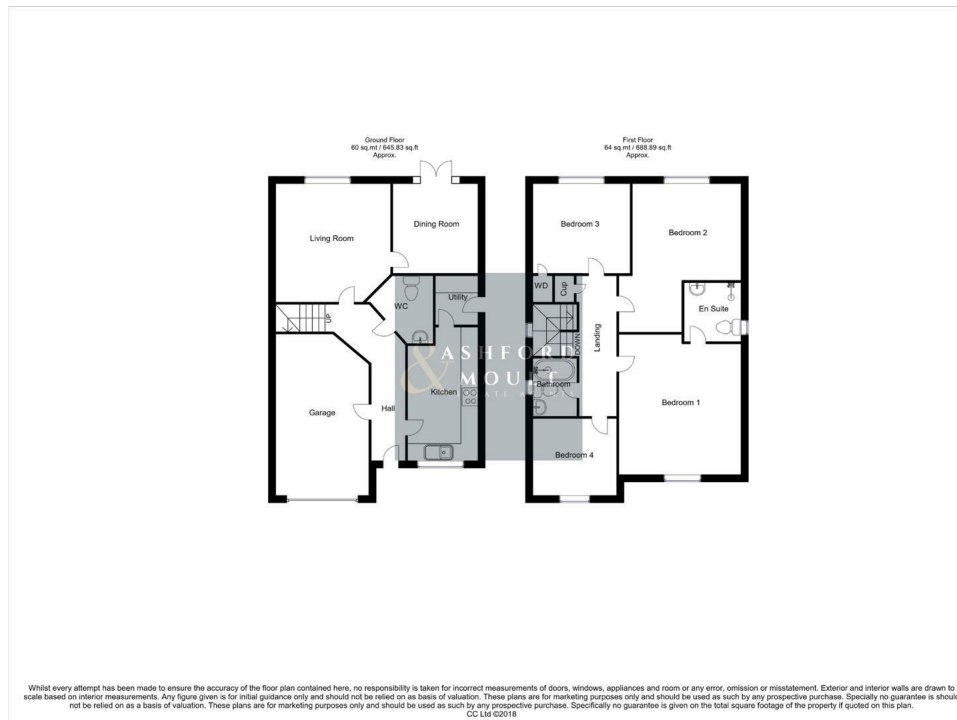
2



2







Agents Note: Whilst every care has been taken to prepare these particulars, they are for guidance purposes only. All measurements are approximate and are for general guidance purposes only and whilst every care has been taken to ensure their accuracy, they should not be relied upon and potential buyers/tenants are advised to recheck the measurements

ASHFORD & MOULT
ESTATE AGENTS

OFFICE ADDRESS
56 Main Street
Calverton
Nottinghamshire
NG14 6FN

OFFICE DETAILS
01158 656675
sales@ashfordandmoult.co.uk