



Gravelwood Close, Chislehurst
£3,650 pcm



WILLIAM CHARLES
PROPERTY SERVICES LIMITED



Welcome to this impressive 4 bedroom semi-detached home located in a sought-after area. This property boasts a driveway and a garage, providing ample parking space for residents and guests alike. Inside, you'll find a modern open plan living area, perfect for entertaining or relaxation. The house features three bath/shower rooms, including an en suite to the master bedroom for added convenience.

The spacious kitchen includes a utility room and leads to the large garden, offering plenty of outdoor space for activities and relaxation. Additionally, the property includes a downstairs WC for added convenience and practicality. With its desirable location and array of features, this property is ideal for families or professionals looking for a comfortable and stylish living space. Don't miss the opportunity to call this beautiful house your new home.







Gravelwood Close, Chislehurst

Council Tax band: D

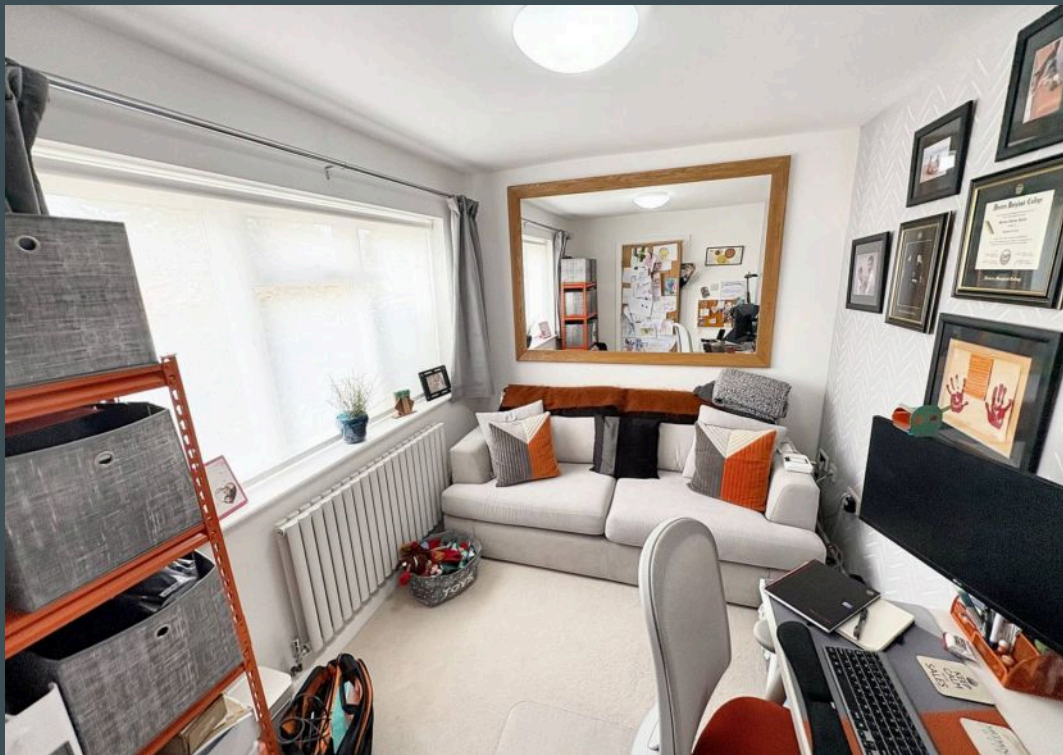
Tenure: Freehold

EPC Energy Efficiency Rating: D

EPC Environmental Impact Rating: E

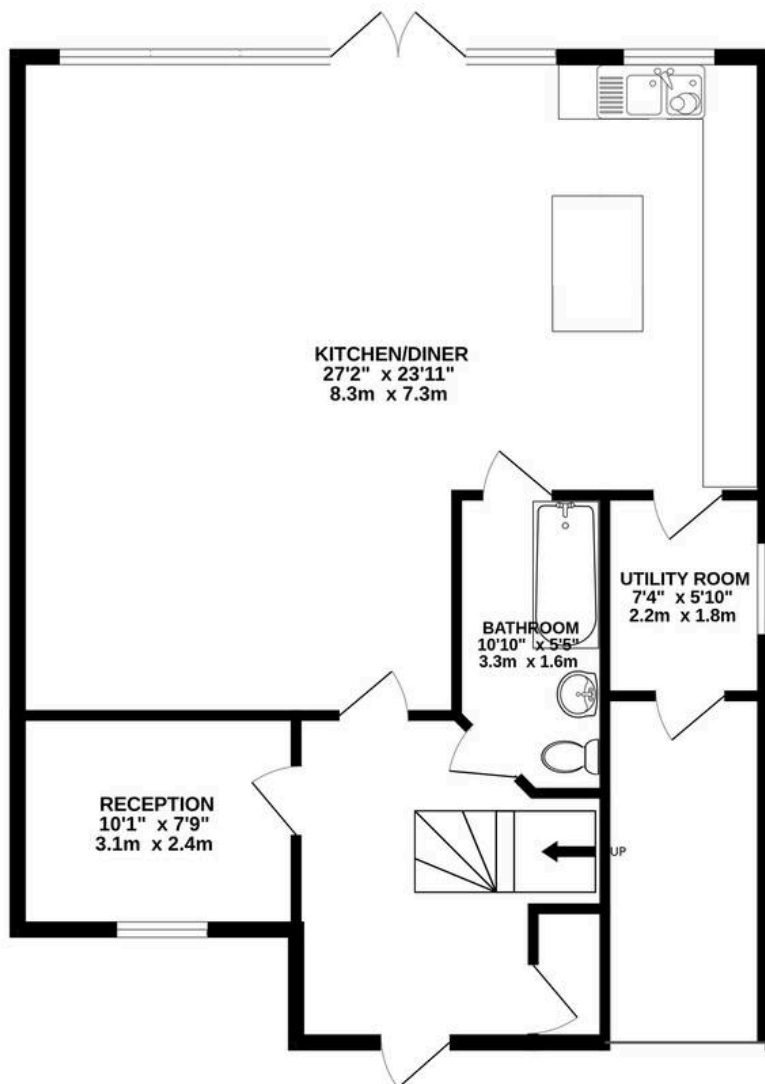
- 4 Bedroom Semi-Detached
- Driveway
- Large Garden
- 3 Bath/Shower Rooms
- Open Plan Living
- En Suite to Master
- Sought After Location
- Utility
- Garage
- Downstairs WC



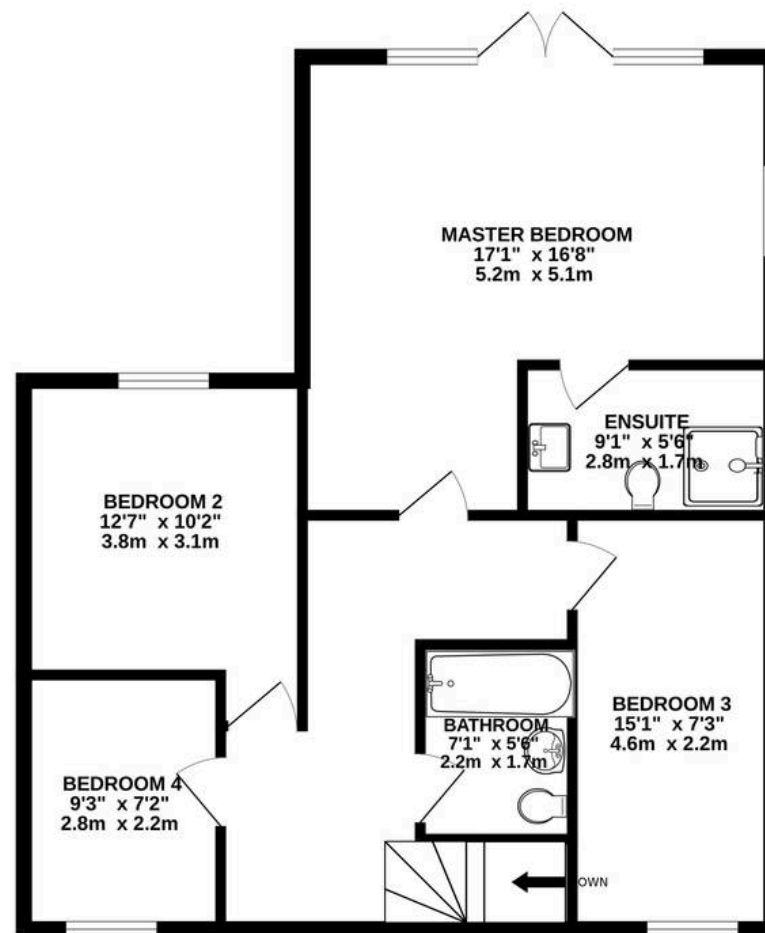




GROUND FLOOR
933 sq.ft. (86.6 sq.m.) approx.



FIRST FLOOR
743 sq.ft. (69.0 sq.m.) approx.



TOTAL FLOOR AREA : 1676 sq.ft. (155.7 sq.m.) approx.

Whilst every attempt has been made to ensure the accuracy of the floorplan contained here, measurements of doors, windows, rooms and any other items are approximate and no responsibility is taken for any error, omission or mis-statement. This plan is for illustrative purposes only and should be used as such by any prospective purchaser. The services, systems and appliances shown have not been tested and no guarantee as to their operability or efficiency can be given.
Made with Metropix ©2025





William Charles Property Services

William Charles Property Services, 1 Bromley Road, Chislehurst - BR7 6LH

02082648264

info@williamcharlesgroup.com

<http://williamcharlesgroup.com>

