



GUILDCREST ESTATES



29 Sandwich Road, Ash CT3 2AF





GUILDCREST ESTATES

Sandwich Road, Ash CT3 2AF

£325,000

Guide Price £325,000 - £350,000

Situated in the sought-after village of Ash, just a short drive from Canterbury, this modern three-bedroom end-of-terrace home offers stylish, comfortable living in a welcoming community setting.

Built in 2004 and measuring around 1,000 sq. ft, the property is ideal for families or professionals seeking space and convenience. The ground floor features an entrance hall with cloakroom, a well-equipped kitchen with plenty of storage, and a bright living/dining room with French doors opening onto the garden. A feature electric fire adds a cosy touch, while handy understairs storage keeps everything neatly tucked away.

Upstairs, there are two generous double bedrooms, each featuring large fitted wardrobes. The master bedroom benefits from an en-suite shower room, while a modern family bathroom serves the rest of the floor. On the second floor, a particularly spacious third double bedroom provides an ideal space for guests, a home office, or a private retreat.

Outside, the property enjoys a private, low-maintenance rear garden ideal for relaxing or entertaining, along with off-street parking for two cars.

Ash is a charming, well-connected village offering shops, pubs, a primary school, and easy access to Canterbury and Sandwich. This beautifully presented home combines modern living with rural tranquillity, making it a superb choice for those seeking comfort, practicality, and community.





Rear Garden

Kitchen

10'2 x 9'11 (3.11 x 3.03)

Lounge / Dining Room

17' x 14'8 max (5.19 x 4.46 max)

Cloakroom

Bedroom 1

10'5 x 10'3 (3.17 x 3.12)

Bedroom 2

16'2 x 9'2 max (4.93 x 2.80 max)

Bedroom 3

10'5 x 10' (3.17 x 3.04)

Bathroom

Ensuite





GUILDCREST ESTATES

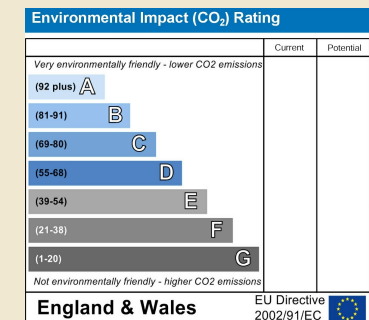
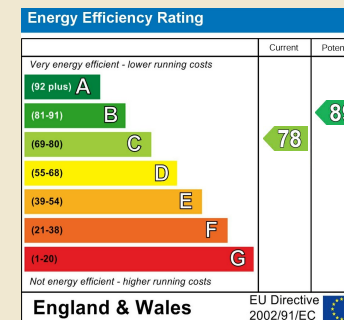
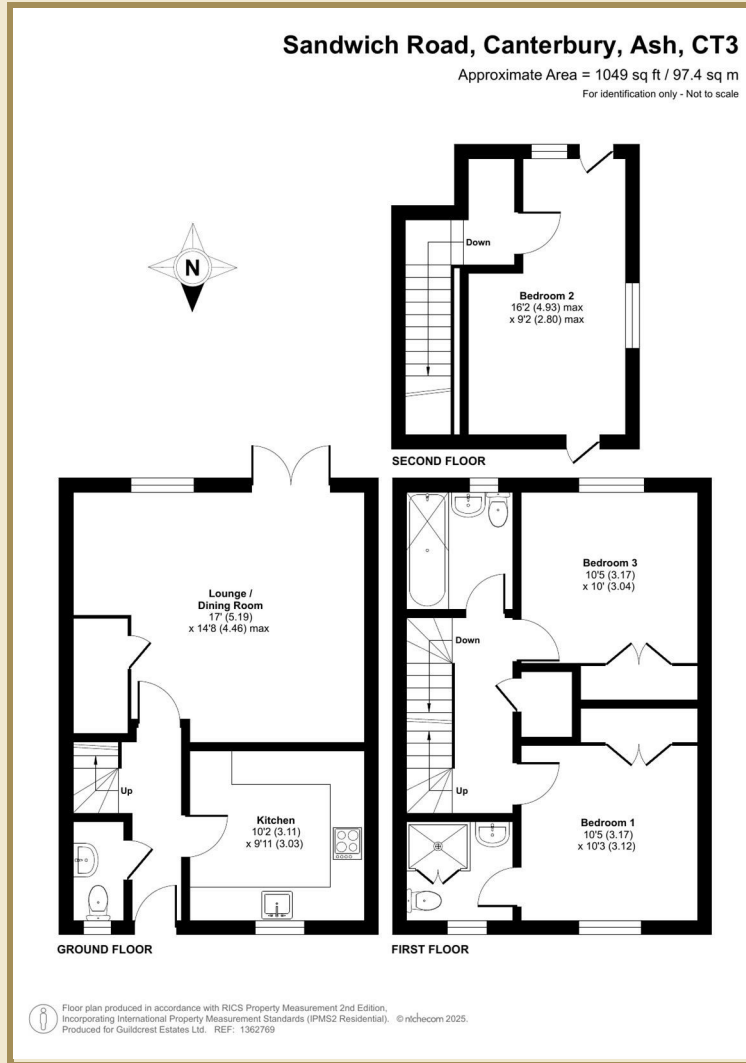
Key Features

- Guide Price £325K - £350K
- Modern three-bedroom end-of-terrace home built in 2004
- Three double bedrooms with an en-suite
- Spacious living/dining room with access to the rear garden
- Private rear garden
- Off-street parking for 2 cars
- Short drive to Canterbury

Important Information

Freehold
House - End Terrace
1001.05 sq ft
Council Tax Band C
EPC Rating C

£325,000



01227 696000 www.guildcrestestates.co.uk

24 Lower Bridge Street, Canterbury, Kent CT1 2LG



Guildcrest Estates Ltd. Registered Office 1 Percy Road, Broadstairs, Kent CT10 3LB Company Number: 13135084 Registered In England & Wales | VAT Number: 374 4288 71

Disclaimer These particulars, whilst believed to be accurate are set out as a general outline only for guidance and do not constitute any part of an offer or contract. Intending purchasers should not rely on them as statements of representation of fact, but must satisfy themselves by inspection or otherwise as to their accuracy. No person in this firm's employment has the authority to make or give any representation or warranty in respect of the property.