



11 ROBIN HOOD CRESCENT WOKING, GU21 2NB

£400,000
FREEHOLD

Nestled on a quiet road moments from Knaphill High Street, this home offers a perfect blend of comfort and convenience. Offering 904 square feet, the property features three well proportioned bedrooms, making it an ideal home for families or working professionals.

Internally the property offers an entrance hallway, spacious through living area with feature fireplace, fitted kitchen, modern bathroom and three good sized bedrooms. The property also offers potential to rear extend and loft convert (STPP).

Externally, one of the standout features of this home is the garage, providing ample storage space or the potential for a workshop. or just an additional parking space. The outdoor area offers a pleasant setting for enjoying the fresh air, whether it be for gardening or simply unwinding after a long day.

WR

WYNDHAM ROW

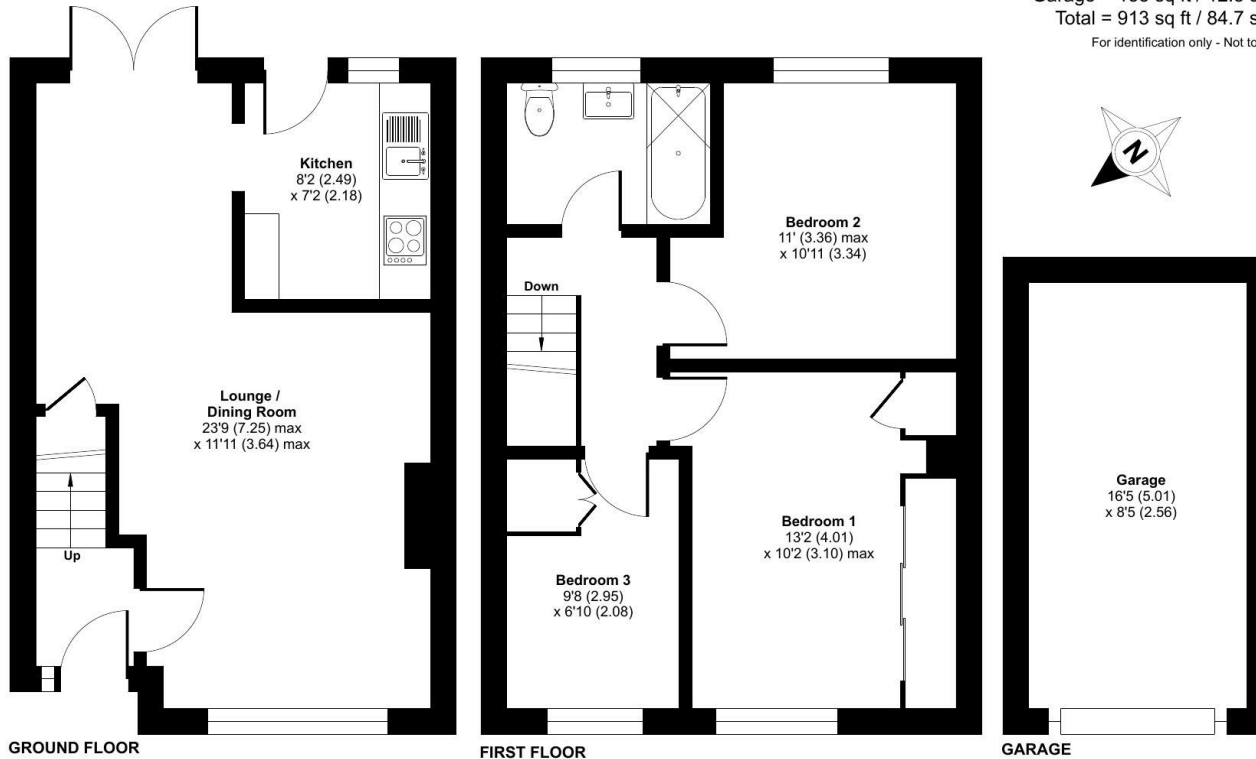
Robin Hood Crescent, Knaphill, Woking, GU21

Approximate Area = 775 sq ft / 71.9 sq m

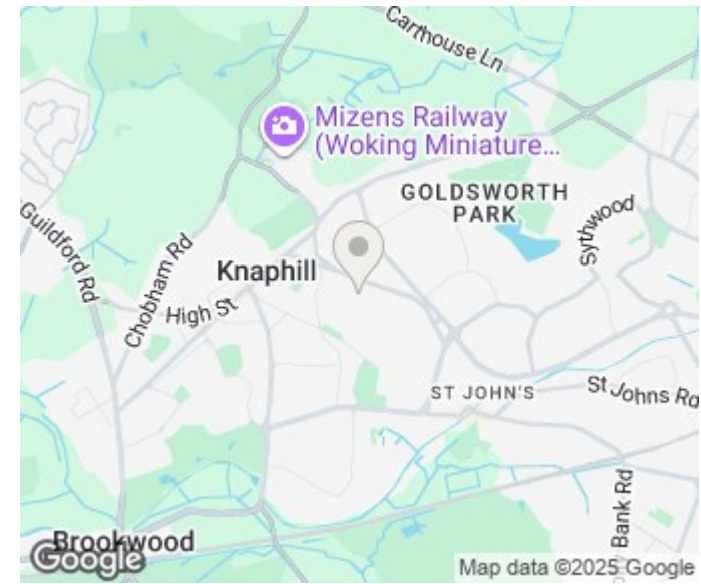
Garage = 138 sq ft / 12.8 sq m

Total = 913 sq ft / 84.7 sq m

For identification only - Not to scale



Floor plan produced in accordance with RICS Property Measurement 2nd Edition, Incorporating International Property Measurement Standards (IPMS2 Residential). © nitchcom 2025. Produced for Wyndham Row LTD. REF: 1376258



Energy Efficiency Rating		
	Current	Potential
Very energy efficient - lower running costs		
(92 plus) A		
(81-91) B		
(69-80) C		
(55-68) D		
(39-54) E		
(21-38) F		
(1-20) G		
Not energy efficient - higher running costs		
England & Wales	EU Directive 2002/91/EC	

Agents Note: Whilst every care has been taken to prepare these particulars, they are for guidance purposes only. All measurements are approximate and are for general guidance purposes only and whilst every care has been taken to ensure their accuracy, they should not be relied upon and potential buyers/tenants are advised to recheck the measurements

Wyndham Row Ltd
Upper Deck, Admirals Quarters
Portsmouth Road
Thames Ditton
Surrey
KT7 0XA

01932 508 000
office@wyndhamrow.co.uk
www.wyndhamrow.co.uk

WR
WYNDHAM ROW