



1 NELMES WAY

HORNCHURCH, RM11 2QY

£2,995,000
FREEHOLD

Stunning 6-Bedroom Detached Home with Luxury Amenities – Nelmes Way, Hornchurch

Nestled in one of Hornchurch's most prestigious roads, this exceptional six-bedroom, six-bathroom detached residence on Nelmes Way offers over 4,000 sq ft of immaculately presented living space, combining grandeur, comfort, and lifestyle in equal measure.

From the moment you arrive, the gated driveway and double garage set the tone for the privacy and exclusivity this home provides. Step inside to discover a beautifully designed interior with spacious reception areas, including a games room, conservatory, and an open-plan layout ideal for both family life and entertaining.

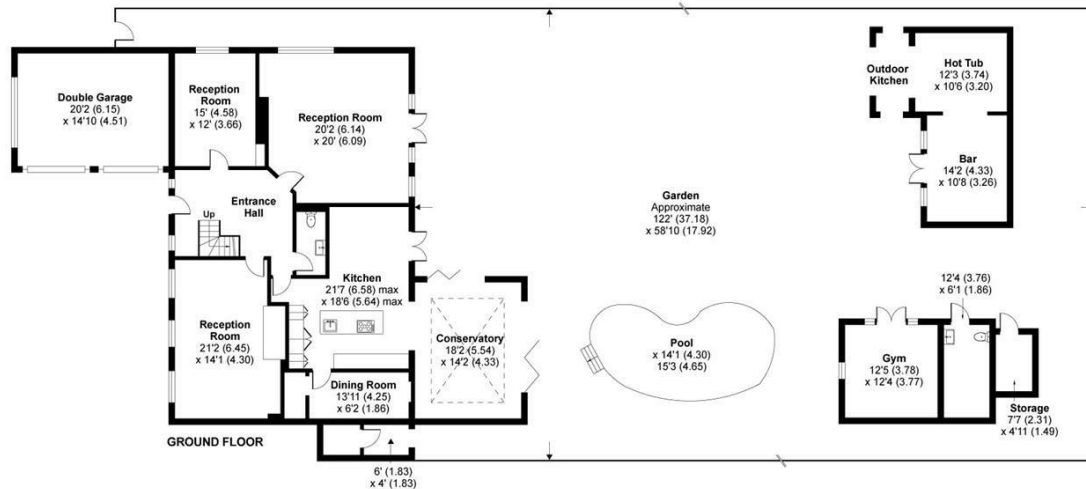
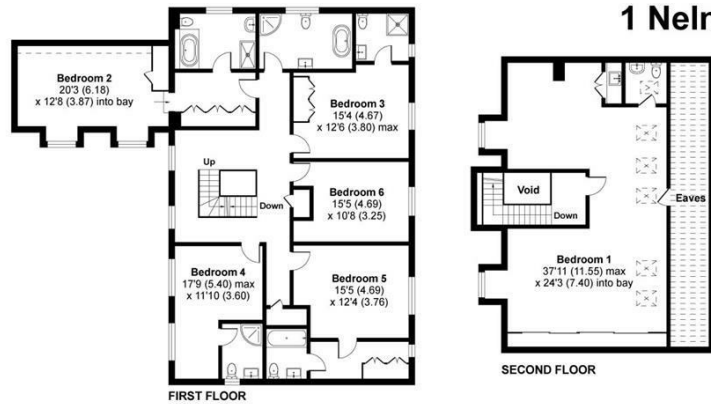
WR

WYNDHAM ROW

1 Nelmes Way, Hornchurch, RM11 2QY

Approximate Area = 4390 sq ft / 407.8 sq m
Including Limited Use Area(s) = 235 sq ft / 21.8 sq m
Garage = 304 sq ft / 28.2 sq m
Outbuildings = 598 sq ft / 55.5 sq m
Total = 5527 sq ft / 513.3 sq m
For identification only - Not to scale

Denotes restricted
head height



Floor plan produced in accordance with RICS Property Measurement 2nd Edition, Incorporating International Property Measurement Standards (IPMS2 Residential). © nichecom 2025. Produced for NicheCom. REF: 1305163



Energy Efficiency Rating		
	Current	Potential
Very energy efficient - lower running costs		
(92 plus) A		
(81-91) B		81
(69-80) C		
(55-68) D	66	
(39-54) E		
(21-38) F		
(1-20) G		
Not energy efficient - higher running costs		
England & Wales	EU Directive 2002/91/EC	

Agents Note: Whilst every care has been taken to prepare these particulars, they are for guidance purposes only. All measurements are approximate and are for general guidance purposes only and whilst every care has been taken to ensure their accuracy, they should not be relied upon and potential buyers/tenants are advised to recheck the measurements

Wyndham Row
Wyndham Row Upper Deck, Admirals
Quarters Portsmouth Road
Thames Ditton
Surrey
KT7 0XA

01932 508 000
oliver@wyndhamrow.co.uk

WR
WYNDHAM ROW