



Poplars Court
St Georges Hill
TR6 0LT

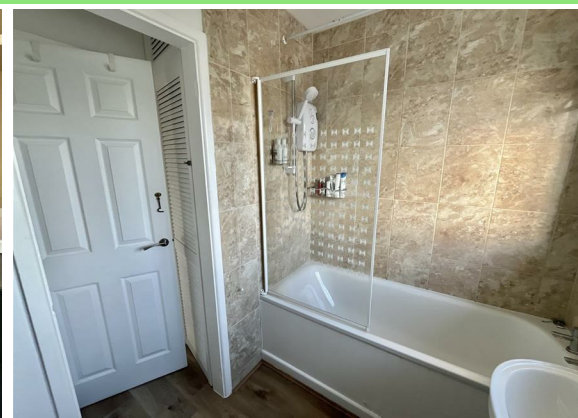
£1,100 PCM

- Contents:
Furnished

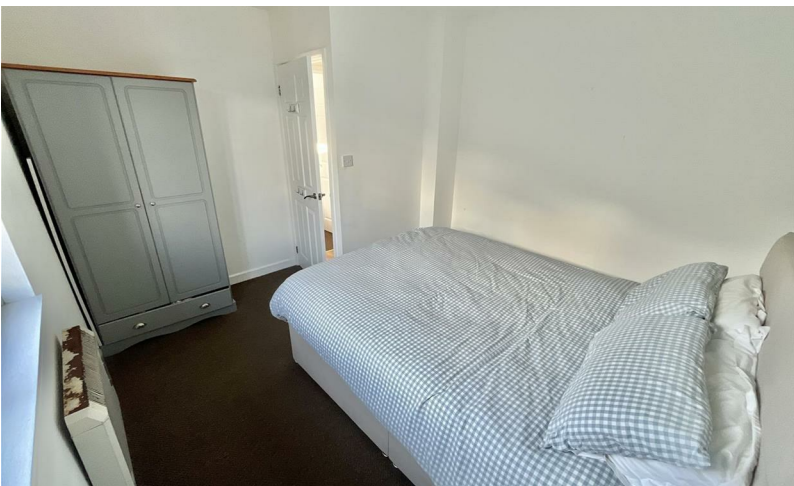
- Deposit Required:
£1,269

- Date Available:
1st February 2026

- Council Tax Band:
B



 **Millerson**
millerson.com



2



1



1



D65

Contact Us

1 Market Street
St Austell
Cornwall
PL25 4BB

centralsoutheastlettings@smartmillerson.
01726 72236
<https://www.millerson.com>

Valuation Request



Energy Efficiency Rating		
	Current	Potential
Very energy efficient - lower running costs		
(92 plus) A		
(81-91) B		
(69-80) C		79
(55-68) D	65	
(39-54) E		
(21-38) F		
(1-20) G		
Not energy efficient - higher running costs		
England & Wales	EU Directive 2002/91/EC 