



# To Let

| London | E15

Apartment

**£1,825 Per Month** | Furnished

1 Reception | 2 Bedroom | 1 Bathroom

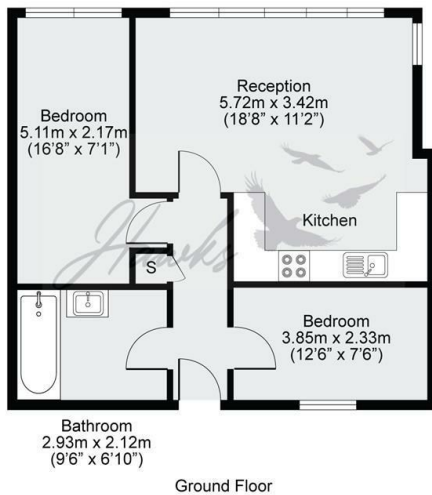
- TWO Double Bedrooms
- Ground Floor
- Wood flooring throughout
- Family Bathroom
- Open plan kitchen
- Furnished
- Close to local shops and amenities

FREEDOM TO MOVE





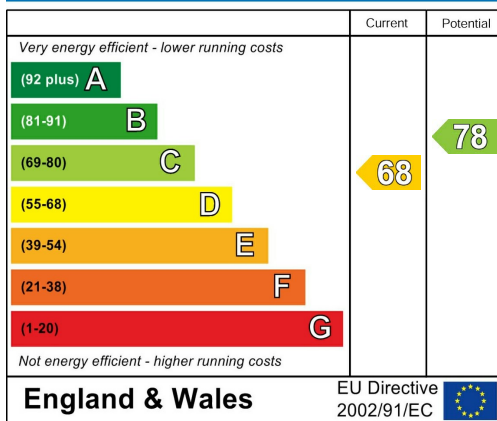
**Gazelle House, Manbey Park Road, London, E15**  
Approx. Gross Internal Area = 57.0sqm / 613.5sqft



Disclaimer: Floorplan measurements are approximate and are for illustrative purposes only. While we do not doubt the floorplan accuracy and completeness, you or your advisors should conduct a careful, independent investigation of the property in respect of misrepresentation.

Maison VUE

### Energy Efficiency Rating



Accuracy: References to the Tenure of a Property are based on information supplied by the seller. The agent has not had sight of the title documents. A buyer is advised to obtain verification from their solicitor. Items shown in photographs including, but not limited to, carpets, fixtures and fittings are not included unless specifically mentioned within the sales particulars. They may however be available by separate negotiation. Buyers must check the availability of any property and make an appointment to view before embarking on any journey to see a property. No person in the employment of the agent has any authority to make any representation about the property, and accordingly any information given is entirely without responsibility on the part of the agents, sellers(s) or lessors(s). Any property particulars are not an offer or contract, nor form part of one. Sonic / laser tape: Measurements taken using a sonic / laser tape measure may be subject to a small margin of error. All measurements: All measurements are approximate. Services not tested: The agent has not tested any apparatus, equipment, fixtures and fittings or services and so cannot verify that they are in working order or fit for the purpose. A buyer is advised to obtain verification from their solicitor or surveyor. Mortgage & financial advice: The Hawks mortgage service is provided by London & Country Mortgages the UK's largest independent fee-free mortgage broker, of Beazer House, Lower Bristol Road, Bath, BA2 3BA. Authorised and regulated by the Financial Conduct Authority. Their FCA number is 143002. YOUR HOME IS AT RISK IF YOU DO NOT KEEP UP REPAYMENTS ON A MORTGAGE OR OTHER LOANS SECURED ON IT. Full written quotation available on request. A suitable life policy may be required. Loans subject to status. Minimum age 18. If you are making a cash offer, we shall require written confirmation of the source and availability of your funds in order that our client may make an informed decision.

AVAILABLE AUGUST 2025

Two bedroom ground floor flat set within Gazelle House located on Manbey Park Road

The apartment is over 600 square foot with ample storage throughout

Open plan kitchen

Wood flooring throughout

Furnished throughout

Located next to Maryland station as well as Westfield Shopping Centre

Close by the University of East London

Please call for immediate viewings Located Zone 2 and Zone 3

Selective Licence

Council Tax Band C - Newham

EPC - Band D



*Hawks*

Hawks  
71 - 73 West Ham Lane, London, E15 4PH  
T: 0203 002 6769  
E: stratford@hawksproperty.com

