



Redriff Road, Surrey Quays

London

Guide Price £1,750,000 - £1,850,000



Redriff Road

Surrey Quays, London

A rare showcase of contemporary elegance and masterful design, this extraordinary residence stands as a true one-off. Recently subject to a full transformation, the property has been elevated with a striking double-height side extension and a private rooftop retreat that sets it apart from anything else on the market.

Step inside and you'll instantly see the craftsmanship and precision behind every finish. A floating oak staircase with integrated motion-sensor lighting sets the tone, paired with exquisite herringbone flooring and a tailor-made kitchen finished with Quartz worktops. Every element speaks of luxury and meticulous attention to detail.

At the centre of the home is the expansive open-plan kitchen, dining, and reception area, fully equipped with smart home features. Cleverly designed zones create an effortless flow for everyday living and entertaining, unified by a dramatic feature fireplace. Floor-to-ceiling bi-folding doors complete the space, drawing in natural light and opening seamlessly onto the garden.

Tenure: Freehold

Redriff Road

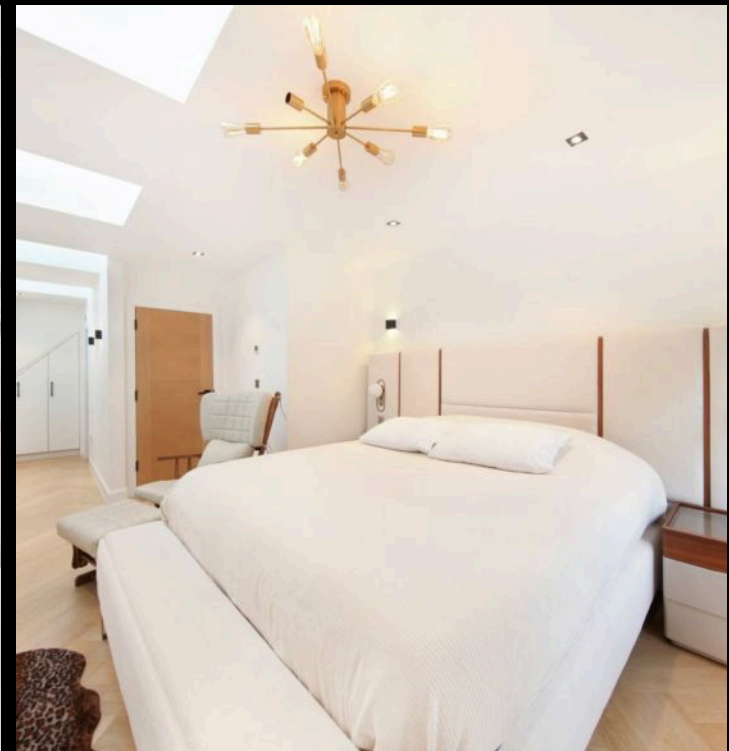
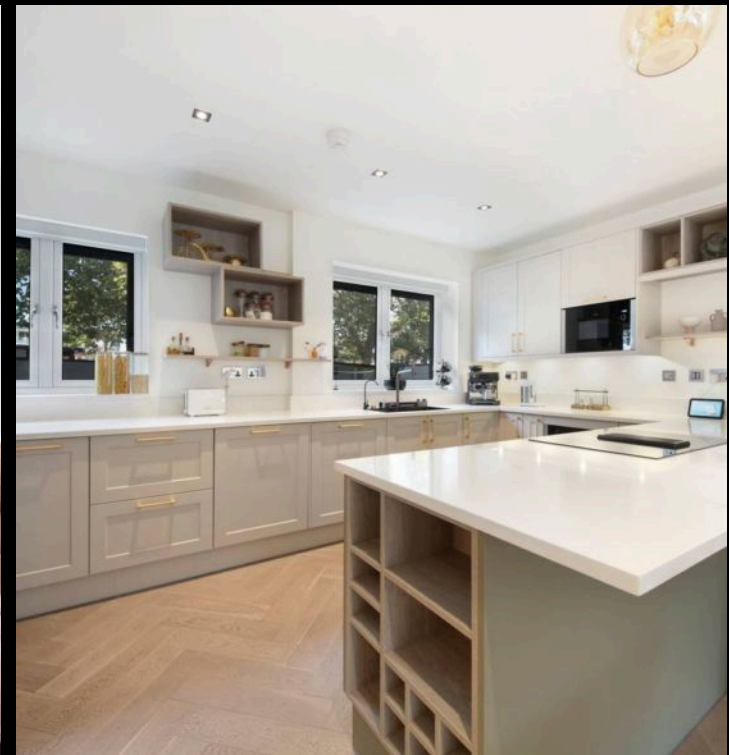
Surrey Quays, London

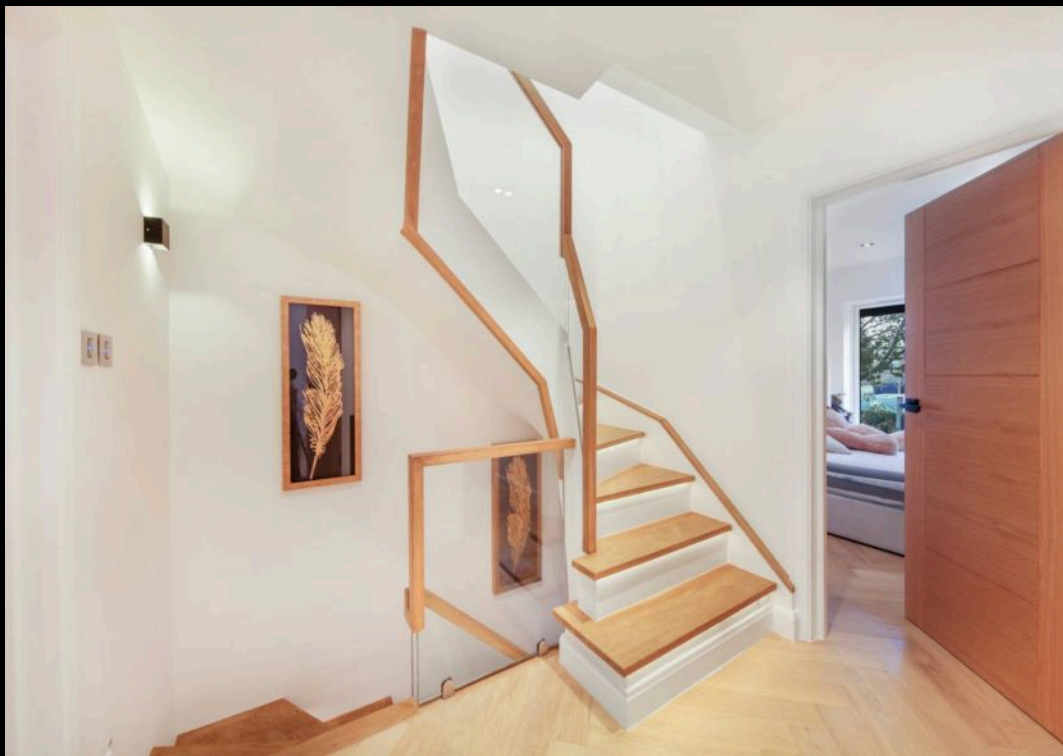
The first floor offers three generous double bedrooms, including a bespoke en-suite to the principal, alongside a beautifully finished family bathroom.

Crowning the property is the entire top floor – a spectacular principal suite with bespoke fitted wardrobes, a stunning en-suite complete with dual basins and a walk-in rainfall shower, and the pièce de résistance: a private roof terrace. Tucked away behind a sleek timber-clad door, this secluded haven offers a tranquil escape right in the heart of town.

- Truly Unique Home
- Custom-Designed Interiors of the Highest Quality
- Principal Suite with Elegant Walk-Through Dressing Area
- Fully Renovated Throughout
- Two En-Suite Bathrooms
- Luxury Family Bathroom
- Smart Home Features
- Underfloor Heating Across All Floors
- Private Roof Terrace
- Bespoke Cabinetry

Tenure: Freehold





Redriff Road, SE16 7PS

Approx Gross Internal Area = 135.4 sq m / 1457 sq ft

Restricted head height = 0.3 sq m / 3 sq ft

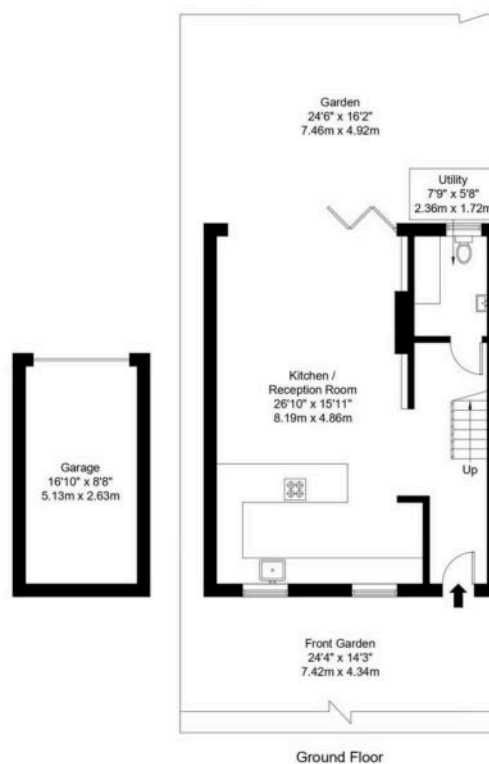
Garage = 13.5 sq m / 145 sq ft

Terrace = 19.1 sq m / 206 sq ft

Total = 168.3 sq m / 1812 sq ft



= Reduced headroom below 1.5m / 5'0



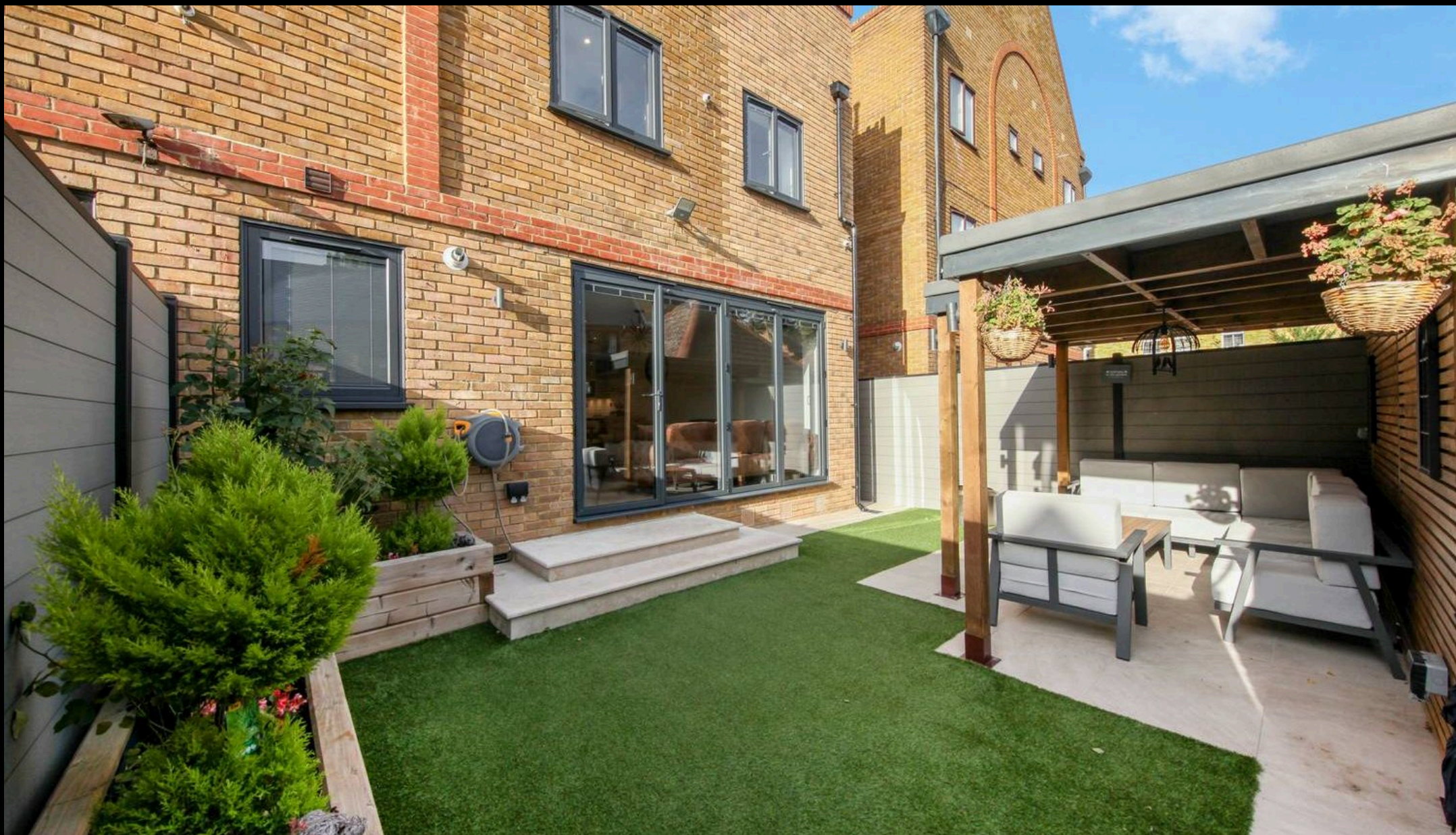
First Floor
Copyright **BLEU PLAN**

Ref :

The Floor plan is not to scale and measurements and areas shown are approximate and therefore should be used for illustrative purposes only. The plan has been prepared in accordance with the RICS code of Measuring Practice and whilst we have confidence in the information produced it must not be relied on. Maximum lengths and widths are represented on the floor plan.

If there is any aspect of particular importance, you should carry out or commission your own inspection of the property.

Copyright @ BleuPlan



Berkleys Estate Agents

28 Mottingham Road, Mottingham - SE9 4QW

02034356660 • hello@berkleyspg.com • berkleyspg.com

B Berkleys
SALES & LETTINGS AGENCY