

**219 Reigate Road, Bromley**

Bromley

**£2,400 pcm**





## 219 Reigate Road

Bromley, Bromley

Presenting a rare opportunity to acquire this charming 3-bedroom end of terrace house located in a peaceful cul-de-sac setting. This immaculately presented property boasts a modern and stylish interior following recent renovations, creating a comfortable and inviting atmosphere throughout.

The ground floor hosts a convenient downstairs shower room and a separate W.C for added practicality. The property further benefits from a bright conservatory, offering a tranquil space for relaxation or entertainment. The fantastic living space offers versatility and comfort for every-day living.

Ideally positioned, this residence is just a 10-minute walk to Grove Park Station, providing easy access to central London and beyond.

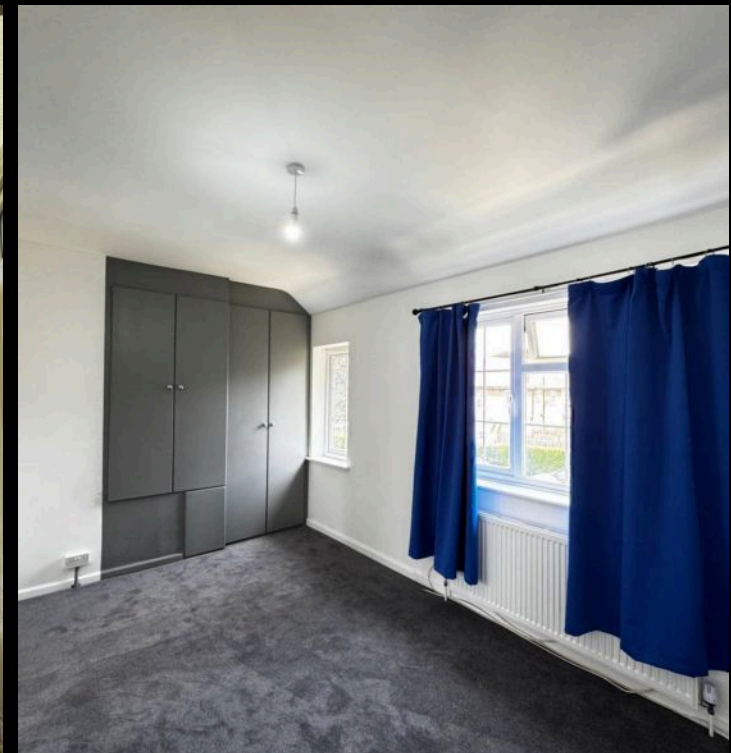
With front and rear gardens providing outdoor areas, this property offers the perfect blend of indoor comfort and outdoor enjoyment. Don't miss the opportunity to make this delightful house your new home. Schedule your viewing today.



# 219 Reigate Road

Bromley, Bromley

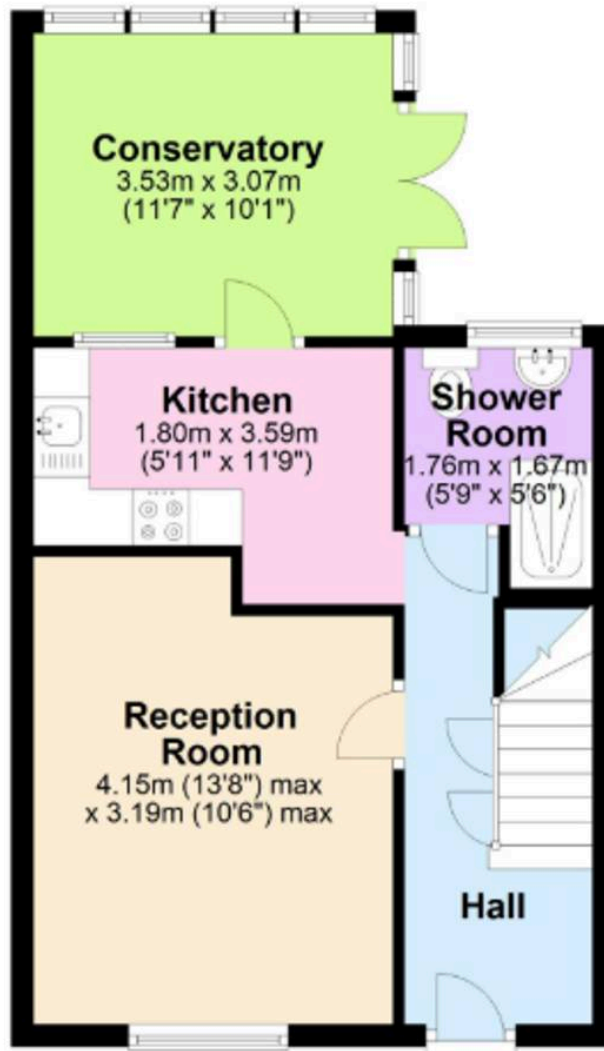
- Three Double Bedrooms
- End of Terrace
- Downstairs Shower Room
- Separate W.C
- Cul-De-Sac
- Front and Rear Gardens
- Recently Renovated
- Conservatory
- Fantastic Living Space
- 10 Min Walk to Grove Park Station



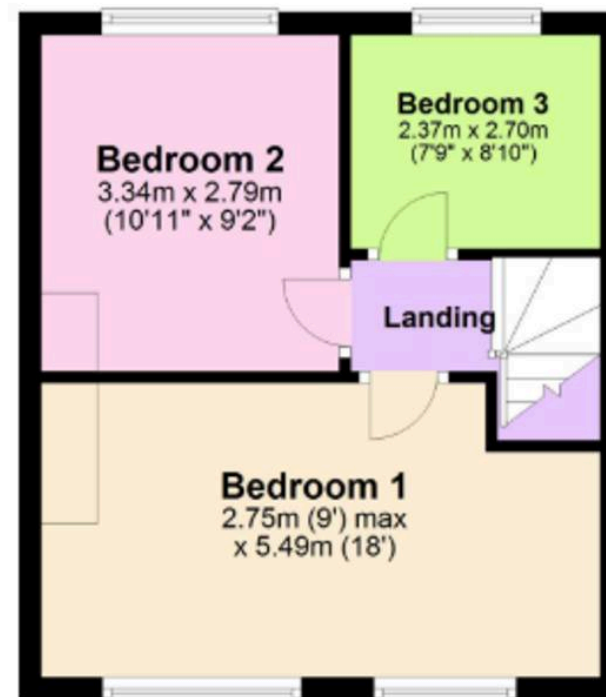




## Ground Floor



## First Floor



This floor plan is for illustrative purposes only. It is not drawn to scale. Measurements are approximate.  
Plan produced using PlanUp.





## Berkleys Estate Agents

28 Mottingham Road, Mottingham - SE9 4QW

02034356660 • [hello@berkleyspg.com](mailto:hello@berkleyspg.com) • [berkleyspg.com](http://berkleyspg.com)

**B** Berkleys  
SALES & LETTINGS AGENCY