



**Moorside Road, Bromley**

Bromley

**£2,200 pcm**



## Moorside Road

Bromley,

Introducing this splendid three double-bedroom end of terrace house, an ideal family home. Boasting a driveway with space for two cars, this property ensures hassle-free parking. Located within a peaceful neighbourhood, this residence is just a leisurely 15-minute walk from Grove Park Train Station, providing easy access to transport links.

With fantastic living space via the large lounge and kitchen area, perfect for hosting gatherings and family meals. The property also features three generously proportioned bedrooms, providing ample space for the entire family to rest and relax.

Additionally, this home benefits from a charming rear garden, a tranquil oasis where you can unwind and enjoy the outdoors. Don't miss this opportunity to make this stunning property your own!

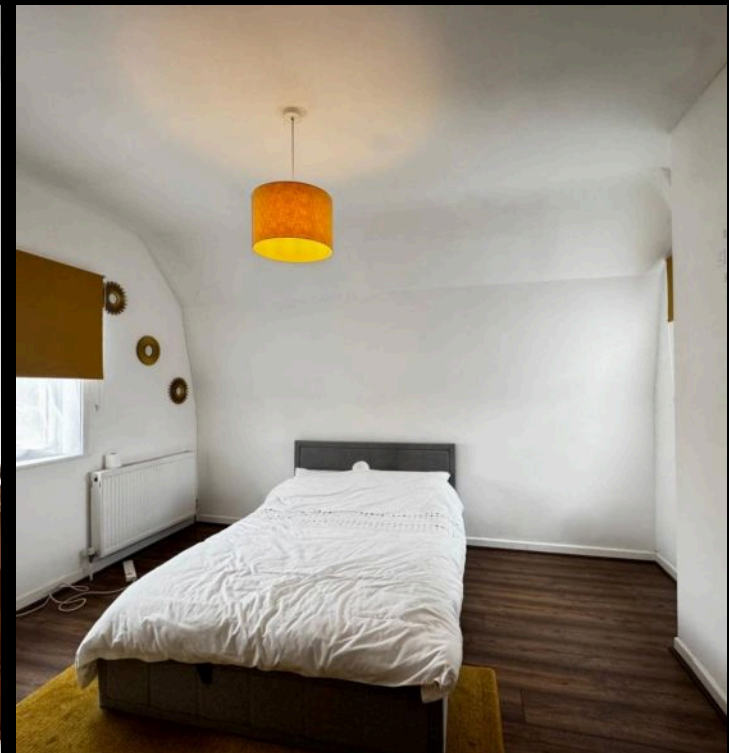
Council Tax band: C

Tenure: Freehold

# Moorside Road

Bromley

- Ideal Family Home
- Corner Plot
- Driveway for 2 Cars
- 15 Min Walk to Grove Park Train Station
- Downstairs Family Shower Room
- Large Kitchen/Dining Room
- Three Double Bedrooms
- Beautiful Rear Garden
- Fantastic Living Space







## Berkleys Estate Agents

28 Mottingham Road, Mottingham - SE9 4QW

02034356660 • [hello@berkleyspg.com](mailto:hello@berkleyspg.com) • [berkleyspg.com](http://berkleyspg.com)

**B** Berkleys  
SALES & LETTINGS AGENCY