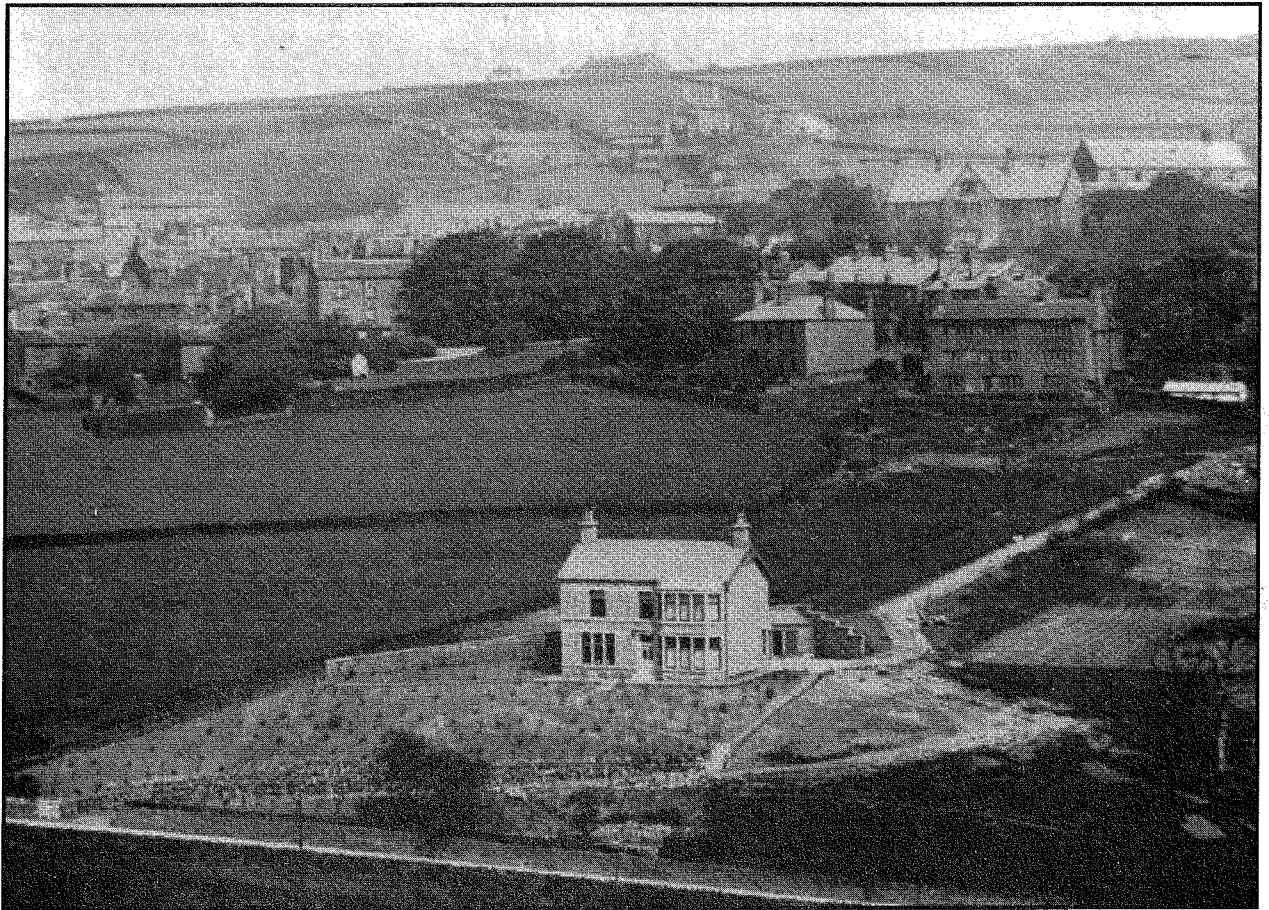


Saddleworth Historical Society Bulletin



Volume 27

Number 2

Summer 1997

BULLETIN
OF THE
SADDLEWORTH HISTORICAL SOCIETY
Volume 27 Summer 1997

	<u>Page</u>
Memories of Dobcross in the 1920s	1
An Old Boundary Stone	6
Saddleworth Auctions	7
Monumental Inscriptions at Delph Independent Chapel, Part Five	8
A & J Butterworth Limited, Haulage Contractors of Greenfield	14
Saddleworth Spiral Puzzle	16
Letters	18
Index to Volume 26	24
Solution to Saddleworth Spiral Puzzle	27

COVER ILLUSTRATION: Dobcross from Ladcastle Road, just before the First World War. The detached house in its own grounds is 'Craigmont', mentioned in the article about Dobcross.

Memories of Dobcross in the 1920s

My parents went to live in Dobcross in 1919 - 20, when I was 8 or 9 years old. Until we moved to Ripponden, in the Ryburn valley, over the Pennines, about three years later, I attended the little Church of England 'National' Elementary School in Dobcross, known locally as Platt Lane School. The Head Teacher was Mr Eyres. He was a gentle, white-haired man, lame, who walked with a stick. I was in his class for the first year or so, when I moved up to Miss Eyres' class. She was Mr Eyres' daughter and taught the top classes - English ('Composition'), Scripture (New Testament), singing and 'Nature'. Mr Eyres retired some months after I went there. I dimly remember that we subscribed and presented him with a leather suitcase. Mr Eyres was succeeded by Mr Pownall, a tall, dark, pale-faced man possibly in his late 30s. He wore spectacles and seemed short-sighted, peering with hunched shoulders. He taught us Scripture - Old Testament, which he called 'The History of the Jews'. We were 'examined' in Scripture by the local Vicar, the Rev. Mr Thomas. Miss Eyres was deeply devoted to her father. Mr Eyres died only a year or so after his retirement, and I recall Mr Thomas, the Vicar, speaking to my class and describing Mr Eyres as one like Sir Galahad, whose strength was as the strength of ten because his heart was pure; Miss Eyres told us afterwards how proud she felt, to have heard that tribute.

Mr Pownall had a small son - aged perhaps seven or eight - Henry Wills Pownall. Mr Pownall had a brother who was conductor of a team of handbell ringers; they played in a school concert - maybe two - during my time there. My three years or so at Dobcross School made an indelible impression on my mind, of which I am conscious to this day; wholly due to the amazing talent and dedication of Miss Ethel Eyres: a teacher years ahead of her time, as I look back over the decades. She taught in the long room at one end of the school. At the back of the classroom was a collection of 'Nature' specimens - stone troughs and glass aquariums with fish, tadpoles, water beetles and water tigers, sticklebacks and gudgeons and caddis worms. Squares of clear glass, one over another, with a layer of fine soil between, housed colonies of black and red ants, which we watched as they tunneled about. The edges were blocked with wads of cotton wool. On the wall were two or three shelves - the School Library - from which we could borrow books: George Eliot, the Brontës, Thackeray, most of Dickens, Jane Austen, Dumas, and a few lesser novels popular at the time - by Mrs Henry Wood, for example ("East Lynne") and Miss Mitford's "Our village". During the three years I was there, Miss Eyres produced performances at the school of "As you like it" and "A Midsummer Night's Dream": a miraculous achievement, not only directing, but creating costumes and scenery and training the young actors to learn and speak their lines - it should be remembered that the school-leaving age was fourteen.

During those years Sir Frank Benson and Mr Henry Baynton, with their touring companies, included Oldham in their annual performances at provincial theatres. On each occasion Miss Eyres took a small group of us in a small 'Black Maria' type of van to the theatre in Oldham, to see the Benson company in "A Midsummer Night's Dream" and "The Merchant of Venice", and Henry Baynton and his wife in "The taming of the Shrew" and "Macbeth". Again, Bransby Williams, a famous character actor, came to Oldham, and we saw him in "David Copperfield", in which he played Mr Micawber and Mr Peggotty. 'Nature', taught by Miss Eyres, entailed combing the local fields and woods and streams for 'species' - specimens - of flowers, trees and pond life. Thus she familiarised us with a considerable knowledge of the names and creatures of wood, field and hedgerow, which I remember and notice to this day.

We had a school pet - a hedgehog called Tommy. He lived in the classroom, in a small hut fixed to the wall. The hut was divided into two sections - one dark, where Tommy slept, and the other equipped with his food trays; he was fed, for one thing, with bread and milk. I remember one fine summer's day he was taken out to a field behind the school for a spell, as was usual. On this occasion the little group of children who had been in charge of Tommy in the field rushed into the classroom to say he was missing. Miss Eyres, panic-stricken, raced out with them, saying he would die if he did not come back. All returned in a little while with the wanderer. Tommy's prickles had been stroked smooth over his back as time went on. He died one August holiday period, at the home of a young teacher.

The school had a motto - 'Play the Game' - displayed in frames on the wall of the classroom.

Miss Eyres, during the period I was there, attended a Summer School - I think in North Wales, and on returning to school in September she taught us 'God be in my head' to the setting by Sir Walford Davies. It is possible he had been one of the tutors at the summer school; Sir Walford was later Master of the King's Musick, and an inspired radio or 'wireless' broadcaster with his talks on "Music and the Ordinary Listener".

For one school concert Miss Eyres trained a groups of girls in country dancing - "Goddesses", "Gathering Peascods" and a Weaving Dance, in which a group of girls with a big ball of wool wove themselves into a pattern and then reversed, to re-wind the wool, singing "This way we make homespun, Over, under, don't you wonder, How we weave in and out".

After 'dinnertime' on Fridays Miss Eyres would return to school with a bundle of "Children's Newspapers" which she had collected at the Newsagents / Post Office in the Square. These were distributed to the senior classes and the last hour of Friday afternoon at school was spent reading it. Another teacher was Miss Garside.

We had a school girls' netball team, which played against other schools in the Saddleworth area.

Before and after the dinner-hour we stood, hands together, eyes closed, and said Grace:

"The eyes of all wait upon Thee, O Lord, and Thou givest them their meat in due season. When Thou givest it them, they gather it, and when Thou openest thy hands, they are filled with good. Glory be to the Father..."

"Praise the Lord, o my soul. Praise His holy name. Praise the Lord, o my soul. And forget not all His benefits. Glory be to the Father..."

During the period I was there, I and two other girls were by some means unbeknown to me sent one morning to a school in Greenfield to 'sit scholarship'. Only one passed - Ethel Sykes (I forget who was the third girl).

During one year I went for one day a week with the other girls in my class to the Central School in Uppermill for Cookery and Laundry lessons. We had a lovely young teacher, Miss Smith. She was from Gloucester, and she lodged with an elderly lady in a cottage somewhere beyond Standedge, travelling

to and from school on a motor bike. I remember she dressed for all weathers in doing this. At the end of the year we were all invited to tea at her lodgings. During the year one girl was off sick, and when the holidays came the girl had a marvellous parcel containing spring flowers - primroses etc - from Miss Smith in Gloucester.

When Mr Eyres died - after retirement - the children of the school lined the churchyard path for the outdoor funeral service; he was buried in the churchyard. He lived in a lovely house, which I think he had built, Craigmont - on the right-hand side of the road leading from the railway station to the bottom of Dobcross Hill. I believe he was twice widowed - Miss Eyres was his elder daughter; he had a son, whom I never saw - he lived and worked away - and a second daughter, Miss Katie, half-sister of our Miss Eyres. Miss Katie taught at Diggle School.

I should add that at school we sat on long wooden forms - no backs - with a writing ledge along the length of the form: always with arms folded behind when not writing.

From the back yard of the school, a path led up alongside an outbuilding, to the 'Infants'. An elderly, grey-haired teacher was the Head there - Miss Lewis. The 'Infants' was, I think, in a room or rooms over part of the senior School. I remember only going there once, on a message.

I remember the names of some of my fellow-pupils:

Alice Hodgson, Molly Hall, Amy Kenworthy, Ethel Sykes, Laura Garside, Irene Clark, George Woodcock, Edgar Garside, Willie Gatenby, Janie Young, Ann Dyson and her (?twin) brother, Katie Kelsall, Annie Dellow, Eric Sykes, Jack Ramsden. (My maiden name was Bertha Ingham).

Jack Ramsden was the eldest of a family living in a cottage down a yard or opening on the left of the road to school before reaching the Square. I think his mother was a widow - I used to see her working - washing etc as I passed. Jack was a very quiet, studious boy. He was awarded a County Major (as distinct from Minor) scholarship. Ann Dyson's brother, I recall, was very quick at mental arithmetic. I am sure he was gifted in the subject. I think his father was a farmer, or worked on a farm some distance away.

My father was a member of the West Riding Constabulary and we were moved from time to time to various places in the Riding. In 1919-20 we came from Keighley - where we had lived for only fourteen months - to Wool Road in Dobcross. The house was one of four near the bottom of Wool Road. The canal was almost alongside at the back, over the wall, and Chambleys mill and dam were across the road at the front. The front door opened down two or three steps on to the pavement. At every house to which we moved my father had to take a ladder and fix a large, heavy medallion over the door: a white rose on a black background - to indicate that a policeman lived there. Chambleys Mill belonged to a family who lived in a big house on the Diggle Road. They bred Guernsey cattle, and I recall a herd passing down Wool Road one day, on their way, I believe, to some event far away - I seem to remember it was in London.

Dobcross was in the Colne Valley Parliamentary Constituency. Philip Snowden was elected MP at the time we were there: he was appointed Chancellor of the Exchequer.

My father and mother were the kindest of people, and I remember occasions when Dad would bring home an unemployed man he had met, in search of work and far from home. At other times he met tramps, who spent their life on the road. Dad would prevail on my mother to give them a meal: which always seemed to mean home-baked bread and butter, boiled eggs, freshly baked scones, and pints of tea. On one occasion Dad so entertained two tramps - who were later caught burgling! This never deterred him. All these men were making for the Workhouse at Running Hill, situated up on the hill on the Diggle end of Standedge Tunnel.

Next door up from us lived an elderly widow, Mrs Shaw, who, I seem to remember, had a daughter living with her. Next beyond her were the Kenworthys, who had three or four teenage children, the youngest, Amy, being my own age. Next beyond their house was a much larger house, set back a little, occupied by the Hall family. Their youngest daughter, Mollie, was at school with me - a lovely, rosy-cheeked girl, full of life. We heard that she died of TB soon after we left Dobcross, some three years or so later. Mr Hall was the manager at Chambleys Mill. A few doors further up Wool Road was the police station: and the Navigation Inn was opposite.

During our time at Dobcross, a rail crash occurred at Diggle, just outside the exit of the Standedge Tunnel. Four people were killed and the event was front page news in the national newspapers. I used to hear Dad recount vividly how the accident occurred, how two trains had collided, due to a signalling error.

The Vicar of Dobcross, with its lovely Georgian Church, was the Rev Mr Thomas. His wife and three daughters, all possibly in their mid and late teens, used to attend Church on Sunday mornings - probably evenings also, which I did not attend. All were very reserved - and striking: as I recall, suggestive of those depicted in pre-Raphaelite paintings. The eldest, who was aged perhaps 17 and I believe still at school in Oldham, was named - as we happened to know by some mysterious means - Sylvia Cynthia Margaret Emmeline. I did not know the names of her sisters, but Miss Sylvia taught my Sunday School class. I think they moved to Dobcross from the south of England. Shortly before we left, Mrs Thomas died suddenly. I can only think it must have been a terrible blow for her daughters, as they were always together. Mr Thomas later married one of his parishoners, Miss Doris Booth.

I remember Dobcross Loom Works, which stood in what might have been a field near the railway line just beyond Diggle station, and the Clock Works, Measurements Mill, on the Delph Road - a large square building of glass and concrete.

Whit Friday - the Friday after Whit Sunday - was a big celebration in the area. The Church choir and members and Sunday School children, with brass band, would assemble about 9am and spend the morning touring the village, stopping at intervals to sing hymns. Lunch and tea were served in a field, and games and competitions were held: a full, busy day for all.

Another happy memory. Every six or seven weeks my father had Saturday 'off', and we usually took the little 'motor' train to Oldham. We used to visit Tommyfields Market, buy Granelli's ice cream; and Dad would invariably buy three Nelson Classics (at 10d each - 2s/6d for three) at a bookstall near the entrance to the inner market.

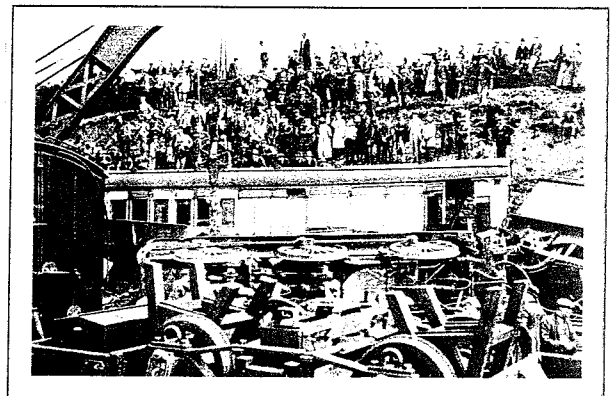
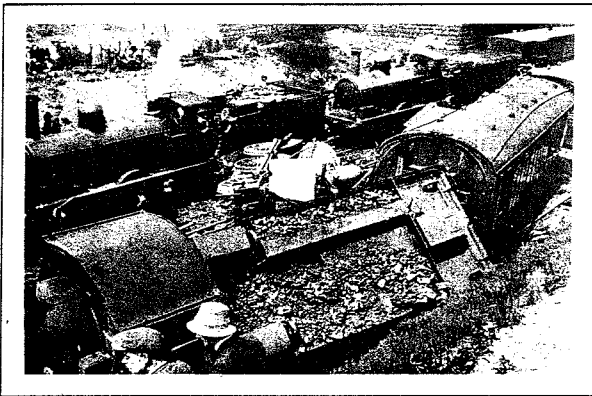
In 1923 a War Memorial was erected at Pots and Pans, and I was with my parents on the crowded pavements at Uppermill when the Earl of Harewood,

the present Earl's father, waved to the crowd as he passed in a small car on his way to the bottom of the hill below Pots and Pans.

I never attended St Chad's Parish Church in Saddleworth but I remember the stocks at the front, outside the gate.

Another memory is that of seeing editions of - I think - the "Daily Mail", with the front page depicting a drawing of starving Russian peasants. I think there were several of these, and I was haunted by them, especially at bedtime and in bed - the thought of them kept me awake; a case of media propaganda.

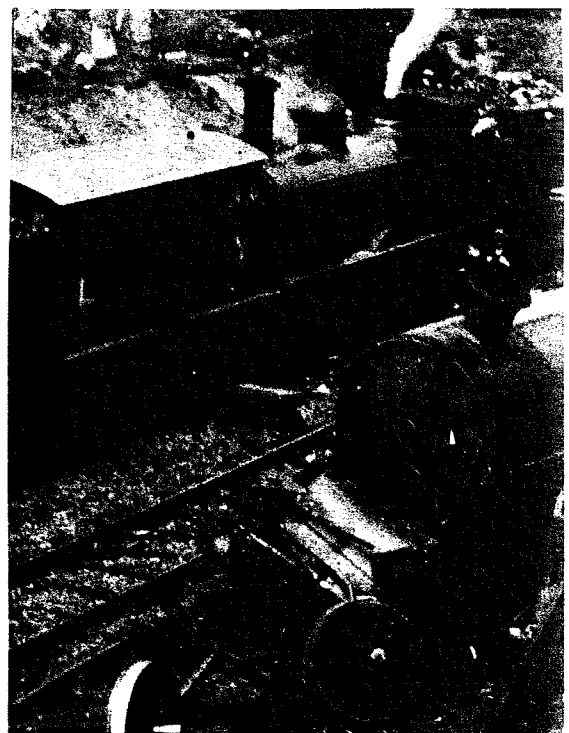
Mrs Bertha Williams



Diggle acquired unsought national fame on 5th July 1923 when a fatal railway accident took place there. An express passenger working from Leeds ran into a goods train which had been mistakenly restarted after the driver of its locomotive had misinterpreted an action of the adjacent signalman. Four people died in the spectacular impact.

The locomotive seen lying against the cutting side near the bridge that carries Ward Lane, was one of two at the head of the express. The engine it was coupled to was completely turned round by the force of the collision, and came to rest on its side by the leading coach of the express.

Operations to make good the carnage are under way in these photographs, which also depict that unchanging human habit of converging on scenes of disaster.



An Old Boundary Stone

The enclosed sketch shows a stone which I spotted in a private garden in Thornley Lane, Grotton.

The stone is roughly dressed and bears the letter 'A' and number 151 on the West face and the single letter 'S' on the East face. These are deeply incised and are of Roman style. The fact that the stone is on the present Oldham - Saddleworth border leads me to believe that it is one of the stones which marked the old boundary of the parish of Ashton-under-Lyne and Saddleworth (West Riding).

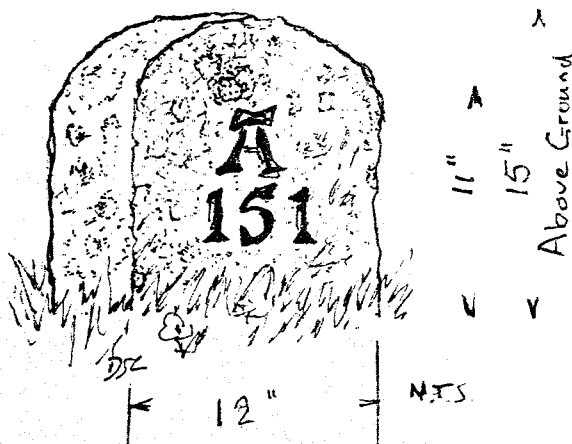
Further investigation in Winifred Bowman's "England in Ashton-under-Lyne" appears to confirm this. There is an account of a "beating the bounds" ceremony in 1643, together with a later account in 1857 of a boundary walk which tells of several boundary stones having been set up and quotes numbers and siting of the stones. Unfortunately stone number A151 is not mentioned specifically.

The map shows that the parish of Ashton once included the whole of Lees and Hey.

A search of the area around Austerlands on the northern boundary revealed another stone, similar to the Grotton one, adjacent to the 933 ft triangulation point. This stone is numbered A167* and has been damaged on the Saddleworth side - the S being only partly visible. Although reference was made to other stones I have not, as yet, found any others.

*This stone is numbered A197 in error in the account in Bowman.

D S Latimer



Letter 'A' is 4" sq
Numerals Approx 3" high
Thickness of Stone 5"
View is of West side
East side has single 'S'

SADDLEWORTH AUCTIONS

Dannie Wright continues his series of extracts from the "Oldham Chronicle".

To: Innkeepers, Brokers, Private Families and Others.

E. G. Cowper have instructions from the administrix of the late Mr William Pontefract to sell by Auction, on Monday April 8th 1861, on the premises known as the Cross Keys, at Saddleworth Church:

The whole of the valuable furniture and effects of the said Inn comprising a very superior Musical Clock, with three cylinders playing twenty-four tunes, Mahogany Painted Dining, Card and Pembroke Tables, sets of Windsor Chairs, oblong and round Taproom and Kitchen Tables, large Chest, four-post and tent Bedsteads, Washstands, dressing Tables and Dressing Glasses, large glazed case of splendid Foreign Birds, Oil Painting on stone, Marquis of Granby, other paintings and engravings, pair of twelve inch celestial and terrestrial Globes, very superior Double-Barrelled Gun, Spirit Casks and Taps, Wine and Spirit Decanters, Tumbler, Wine and other Glasses, china Tea Services, metal Tea and Coffee Pots, common Earthenware of all sorts, Ale and spirit Measures, Brass, Copper, Iron, Tin and Wood Ware, loose Clubroom Tables and Tressels, two hundred feet of excellent Forms, new Cradle, Fenders and Fireirons, Carpets and Rugs, Chimney Ornaments, Beer and Water Cans, and Household Requisites.

The Brewing Utensils and Effects: large iron Brewpan and Fixings, Wood Cooler lined with lead, Mash and Work Tubs, Dippers, Hop Sieve, and Troughs, Barrels, Bottles, metal Buckets, two Roiler Malt Mills (one of which is first class like new), new Wheelbarrow, Farming and Garden Implements, two cylinder and several flat Machine Brushers, Brass Taps and Points for Gas Fittings, Indiarubber Washers, Weighbeam and Scales, Old Brass, Lead and Iron and an endless variety of Sundries, the whole of which will be sold without reserve.

Also after the Sale one lot of the whole of the loose Building Materials comprising Dressed Stone, Bricks, and Timber, now lying on the site of the late Gas Works, near the "Hare and Hounds" at Uppermill in Saddleworth.

Sale to begin eleven o'clock aforenoon prompt.

* Dannie wonders if any of the items mentioned might still be in Saddleworth. Does any reader know?

Monumental Inscriptions at Delph Independent Chapel - Part V

147 Sarah daughter of Emmanuel and Ann KENWORTHY OF Tunstead who died March 11th 1840 in the 23rd year of her age. Also the abovenamed Ann wife of Emmanuel KENWORTHY who died Nov^r 15th 1843 in the 63rd year of her age. Also the aforesaid Emmanuel KENWORTHY who died Nov^r 9th 1849 in the 70th year of his age. Also Eliza wife of James KENWORTHY of Scouthead, son of the above Emmanuel and Ann KENWORTHY who died June 29th 1861 in the 50th year of her age. Also Ann their daughter who died Feb^y 15th 1873 aged 28 years.

148 John the son of John HALL of Stones. He died April 18th 1790 in the 16th year of his age. Also Joseph his son who died January 18th 1791 in the 1st ? year of his age. Also the aforesaid John HALL who died November 24th 1811 in the 63rd year of his age. Also Betty his wife who died January 29th 1836 aged 84 years.

149 Ann the daughter of William and Mary PICKUP of Delph-Barn died July 22nd 1870 in her 22nd year. Also James their son died June 20th 1887 in his 37th year. Interred at Pine Grove Cemetery, Spencer, Mass, U. S. A. Also the said William PICKUP who died Dec^r 27th 1891 aged 66 years. Also Mary his wife who died March 7th 1907 aged 82 years.

150 Thomas WHITEHEAD OF Sandbed who died August 27th 1876 aged 84 years. Also Jane his wife who died September 25th 1870 aged 77 years. Also Seth their son who died October 3rd 1849 aged 19 years. Also Sam their son who died March 5th 1858 aged 25 years. Also Herbert their grandson who died September 9th 1870 aged 11 years. Also Sarah their daughter who died December 1st 1887 aged 68 years. Also Jane their daughter who died December 26th 1908 aged 68 years. John Norris WHITEHEAD died March 29th 1927 aged 87 years. Also Mary his wife died August 27th 1932 aged 90 years. Also Sarah Jane their daughter died December 1st 1878 aged 4 years.

151 Thomas OGDEN of Greenacres Hill who died May 14th 1871 in his 28th year.

A loving husband true and kind,
He was to me in heart and mind,
A careful husband too as well,
While he on earth with me did dwell.

Also Joseph Thomas son of Thomas and Eliza OGDEN who died Sept 3rd 1866 aged three weeks.

152 Alice wife of John WRIGLEY of Dobcross who died Jan^y 17th 1805 aged 29 years. Also John WRIGLEY, son of John and Alice WINTERBOTTOM and grandson of the abovenamed John WRIGLEY who died April 21st 1830 aged 4 months and 17 days. Also the abovenamed John WRIGLEY of Dobcross who died May 15th 1831 in the 62nd year of his age. Also Alice wife of John WINTERBOTTOM and eldest daughter of the aforesaid John WRIGLEY who died 1833 in the 33rd year of her age. Also Mary Louisa eldest of the abovenamed John WINTERBOTTOM and Alice his wife who died May 15th 1868 in the 42nd year of her age. Also the abovenamed John WINTERBOTTOM of Bridge House Dobcross who died April 28th 1870 aged 77 years. Also Mary Buckley WRIGLEY daughter of the abovenamed John WRIGLEY who died March 29th 1879 aged 76 years.

153 Hugh son of Benjamin & Alice BYRAM of Bankfield who died April 13th 1828

in the 19th year of his age. Also Betty their daughter who died March 22nd 1830 in the 19th year of her age. Also the said Benjamin BYRAM who died June 9th 1846 in the 73rd year of his age. Also Alice his relict who died Jan^y 23rd 1849 in the 78th year of her age. Also Mary BYRAM their daughter who died Feb^y 26th 1853 in the 49th year of her age. Also Alice BYRAM their daughter who died March 26th 1853 in the 49th year of her age. Also Samuel BYRAM of Hillend, their son who died Oct^r 2nd 1868 in the 70th year of his age. Also Jane BYRAM their daughter who died Feb^y 4th 1870 in the 63rd year of her age.

154 Jane the daughter of John KENWORTHY of Birtchonbank who died July 6th 1805 in the 23rd year of her age. Also Betty his wife who died July 6th 1807 in the 54th year of her age. Also Samuel his son who died June 30th 1818 in the 4th year of his age. Also Ephraim his grandson who died Feb^y 26th 1828 in the 24th year of his age. Also Mary his wife who died January 14th 1835 aged 58 years. Also the aforesaid John KENWORTHY who died March 30th 1836 in the 75th year of his age. Also Mary his granddaughter and daughter of Isaac and Lucy BENTLEY of New Delph who died April 1st 1842 in the 5th year of her age.

155 Mary BUCKLEY wife of Henry BUCKLEY of Hey Barn who died 28th Feb^y 1804 in the 38th year of her age. Also the aforesaid Henry BUCKLEY who died 21st Jan^y 1844 in the 82nd year of his age. Also James BUCKLEY their son who died April 9th 1871 in the 87th year of his age. Also Esther wife of the aforesaid James BUCKLEY who died March 29th 1850 in the 65th year of her age.

156 William BUCKLEY of Stones-Wood, Delph who died December 10th 1899 aged 75 years. Also Ann his wife who died April 19th 1854 aged 27 years. Also Lewis their son who died July 6th 1866 aged 13 years. The above (Ann and Lewis) were interred at St. Chad's Church Saddleworth. Also Adam their son who died Nov^r 14th 1877 aged 27 years. (Interred at above church). Also Esther wife of the above W^m BUCKLEY who died May 18th 1892 aged 70 years and was interred at St Thomas' Church Delph. Also Arthur beloved husband of Fanny Jane BAXTER who died December 29th 1926 aged 59 years. Also the above Fanny Jane BAXTER who died January 8th 1940 aged 73 years.

157 Joseph son of Thomas and Mary WINTERBOTTOM of Poden, who died June 18th 1848 aged 8 months. Also 3 of their children, not named. Also the above Mary wife of the said Thomas WINTERBOTTOM who died February 1st 1860 in the 32nd year of her age. Also the said Thomas WINTERBOTTOM who died January 17th 1882 in the 58th year of his age.

158 Sarah KENWORTHY daughter of Hugh and Peggy KENWORTHY of Delph who died 9th May 1839 in the 3rd year of her age. Also the above Hugh KENWORTHY who died 1st May 1854 in the 42nd year of his age. Also Peggy his wife who died November 29th 1895 in the 86th year of her age.

159 Henry MALLALIEU of Philips who died April 2nd 1807 in the 81st ? year of his age. Also Anna his widow who died August 14th 1810 in the 87th year of her age.

160 Sacred is this monument erected by the Church and Congregation to the memory of their late revered and beloved Pastor, the Revd. Noah BLACKBURN, who laboured in this place in word and doctrine for upwards of 34 years, displaying the riches of free and sovereign Grace and Mercy to lost sinners by the blood, the righteousness, and the atonement of the Lord Jesus Christ, and who finished his labours in the church Militant, and his happy spirit

took its flight to join the church triumphant, on May the 4th, A.D. 1821, in the 70th year of his age.

Within this sacred House he spent his breath;
Now, silent, senseless, here he lies in Death.
Those lips shall wake again, and then declare
A dread Amen to truths delivered here.

161 Sacred to the memory of Martha relict of Rev. N. BLACKBURN, who died on the 19th Nov. 1826 aged 72. Benjamin Britain, died 4th Oct. 1787 aged 15 months. William died 29 Aug. 1792 aged 4 years and 11 months. Owen died 2nd Sep. 1792 aged 6 months. Joseph died 2nd Decem. 1817, aged 22 years.

(Nos. 160 and 161 are taken from: "History of the old Independent Chapel, Tockholes, near Blackburn, Lancashire" by Benjamin Nightingale (1886), and are inside Delph Chapel).

162 Hannah Mary daughter of Charles & Maria WINTERBOTTOM of Delph, who died Feb^y 5th 1852 aged 17 days. The aforesaid Maria who died July 8th 1855 in her 31st year. And John Samuel their son who died Oct^r 4th 1855 aged 15 weeks. Also the abovenamed Charles Winterbottom who died December 19th 1896 aged 70 years. Also Hannah his wife who died June 24th 1910 aged 87 years. Also Mary Alice their daughter who died July 27th 1860 aged 1 year & 5 months. Also Walter their son who died 26th June 1863 aged 18 weeks. Also Charles Harold their son who died March 4th 1871 aged 6 years. Also Annie Maria their daughter who died January 3rd 1939 aged 81 years.

163 William WHITEHEAD OF Greenleach who died February 20th 1870 aged 79 years. Also Mary his wife who died Dec^r 14th 1866 aged 75 years. And three of their children. William died March 10th 1824 aged 8 months. Hannah died Oct. 14th 1843 aged 16 years. William died March 5th 1865 aged 38 years. Also Alice Maude Mary, daughter of William and Sarah WHITEHEAD and granddaughter of the aforesaid William and Mary WHITEHEAD died April 26th 1866 aged 11 months.

164 Alfred son of John and Hannah LAWTON of Green-ash who died April 5th 1822 in the 4th year of his age. Also Alfred Hugo their son who died May 8th 1825 in the 2nd year of his age. Also Hannah W. their daughter who died April 23rd 1828 in the 2nd year of her age. Also Edwin their son who died March 11th 1834 in the 1st year of his age. Also William LAWTON brother of the abovenamed John LAWTON who died 19th March 1837 in the 26th year of his age. He ws buried at St. John's Church in the City of New York. Also Joseph LAWTON his brother who died 13th March 1840 in the 39th year of his age. He was also buried at St John's Church New York. Also Mary daughter of the said John & Hannah LAWTON who died Jan^y 10th 1852 in the 32nd year of her age. Also Abram their son who died March 28th 1853 in the 39th year of his age and was interred at Chelford. Also Hannah wife of the said John LAWTON who died Aug^t 25th 1867 in the 75th year of her age. Also the aforesaid John LAWTON who died October 25th 1870 in the 79th year of his age. Also Esther daughter of the above John LAWTON who died July 28th 1895 in the 79th year of her age.

165 Mary Ann daughter of Abram and Mary BOTTOMLEY of Ridge who died June 15th 1830 in the 15th year of her age. Also Mary wife of the aforesaid Abram BOTTOMLEY who died December 19th 1831 in the 59th year of her age. Also the aforesaid Abram BOTTOMLEY who died November 26th 1845 in the 85th year of his age.

- 166 Elizabeth Ann HOLROYD daughter of Linfitt Lees and Sarah HOLROYD of Garners who died Jan^y 17th 1857 aged 17 weeks. Also John BUCKLEY of Garners who died Feb^y 28th 1871 in the 67th year of his age. Also Sarah BUCKLEY his wife who died Dec^r 26th 1874 in the 73rd year of her age. Also Joseph Buckley of Garners who died March 21st 1891 in his 69th year. Also Evelina daughter of Joseph and Sarah Hannah HOLROYD who died May 26th 1891 in her 3rd year. Also the aforesaid Linfitt Lees HOLROYD who died January 22nd 1892 in his 63rd year.
- 167 Catherine daughter of Edwin and Esther Emily MELLOR of Hill-end who died Aug^t 3rd 1862 aged 14 months. Also the abovenamed Edwin MELLOR born Jan^y 10th 1816. died April 27th 1880. Also William Oxley their son, born June 18th 1859, died Nov^r 18th 1887. Also the abovenamed Esther Emily MELLOR born March 30th 1831, died June 21st 1905. Also John Howard their son, born Aug^t 19th 1857, died Dec^r 14th 1924.
- 168 John son of the late John BYROM of New Barn, who died Sept 25th 1881 aged 49. Also Benjamin his brother who died Feb^y 20th 1893 aged 55. Also Alice second daughter of the late John and Betty BYROM who died July 12th 1908 aged 82. Also Hannah eldest daughter of the late John and Betty BYROM who died July 2nd 1910 aged 86 years. Also Mary Jane youngest daughter of the late John and Betty BYROM who died June 24th 1916 aged 75.
- 169 Betty daughter of John BYROM of New Barn, who died Aug^t 29th 1857 aged 22. Also the abovenamed John BYROM who died April 11th 1863 aged 66. Also Dorothy daughter of the above who died May 7th 1873 aged 45. Also Betty relict of the aforesaid John BYROM who died Oct^r 17th 1877 aged 78.
- 170 Lois wife of John WINTERBOTTOM of Wood Mill who died April 4th 1847 in the 48th year of her age. John WINTERBOTTOM of New Delph who died March - 1880 aged 90 years.
- 171 George CARTER of New Delph died. (sic). Hannah Elizabeth his wife died (sic). Sarah Ellen their daughter died March 19th 1853 aged 10 months. George their son died July 14th 1859 in his 6th year. George Thomas their son died Feb^y 7th 1864 aged 9 months.
- 172 Mary Emily daughter of Henry & Mary KENWORTHY died May 5th 1866 aged 11 months. Laura Annie their daughter died August 8th 1866 aged 3 years.
- 173 Samuel son of John and Lois WINTERBOTTOM of Delph died May 26th 1843 in the 19th year of his age.
- 174 Jn^o WRIGLEY, Greenfield died May 5. 1852 aged 61 years.
- 175 James BOTTOMLEY of Diggle-edge, who died April 12th 1829 aged 75 years. Also Betty sister of the above Jas. BOTTOMLEY who died April 14th 1849 in her 81st year.
- 176 Joseph SHAW of Wellhead who died February 13th 1875 aged 61 years. Mary his wife who died April 4th 1892 aged 75 years. Also James WRIGLEY of Rance who died December 29th 1883 aged 68 years. Also Betty his wife who died December 6th 1887 aged 68 years. Edmund BUCKLEY of Tame House New Delph who died February 27th 1866 in the 73rd year of his age. And Sally his wife who died March 17th 1873 in the 83rd year of her age. Also John BUCKLEY, their son who died May 20th 1893 in the 70th year of his age. And Esther his wife who died January 17th 1903 in the 75th year of her age.

177 James Henry son of John & Jane BUCKLEY of Delph, who died Jan^y 23rd 1859 aged 5 years. Also Beckett their son, who died June 6th 1866 aged 6 years. Also the aforesaid John BUCKLEY who died July 26th 1883 aged 56 years. Also Ben their son who died Nov^r 21st 1889 aged 23 years. Also Jane Ann their daughter who died Dec^r 6th 1889 aged 29 years. also Betty their daughter who died April 24th 1907 aged 37 years. Also Jane widow of the aforesaid John BUCKLEY who died May 1st 1907 aged 74 years. Also Walter their son who died September 14th 1912 aged 49 years. Also Emma (Annie) widow of Walter BUCKLEY who died July 21st 1933 aged 67 years. Also Jane daughter of the above Walter & Emma BUCKLEY died May 7th 1940 aged 37 years.

178 William son of James & Anne HOWARD of Crowstone-Gate, who died 7th January 1845 aged 11 years. Also Betty their daughter who died 17th July 1879 aged 48 years. Also the said Anne his wife who died 16th July 1881 aged 76 years. Also the said James HOWARD who died 2nd July 1883 in his 80th year.

179 Sarah Ann wife of William WHITEHEAD of Oldham, formerly of Sandbed, who died July 4th 1870 aged 48 years. Also William their son who died February 24th 1852 aged 4 months. Also Annie their daughter who died March 3rd 1866 aged 11 months. Also William their son who died October 12th 1871 aged 7 months. Also Lucy their daughter who died February 22nd 1885 aged 22 years. Also the first named william WHITEHEAD who died at Mackay, Queensland on 1st Jan^y 1892 aged 67 years.

180 Ralph and Sarah BUCKLEY. Gate-Head.

181 Lot BRIERLEY. Delph.

182 Hr^y WHITHEAD (sic) Greenacres Moor.

183 Sarah KENWORTHY, New Delph.

184 Lucy wife of Hugh KENWORTHY of Ogden-edge, who died 3rd Nov^r 1820 in her 23rd year. Also Margaret his second wife who died 13th August 1876 in her 79th year. Also the abovenamed Hugh KENWORTHY who died 2nd May 1877 in his 82nd year.

185 Sarah wife of Joseph WHITEHEAD of Ox Hey, who died June 3rd 1876 aged 65 years. Also the aforesaid Joseph WHITEHEAD who died March 5th 1880 aged 68 years.

186 John LEES of Hill Top who died January 24th 1874 aged 84 years. Also Mary his wife who died Dec^r 25th 1846 aged 56 years. Also James their son who died February 25th 1884 aged 60 years. Also John LEES their son of Garfield Cottage, Delph, who died May 18th 1896 aged 70 years. lso Betty his wife who died August 14th 1892 aged 53 years.

187 Martha wife of James HENTHORN of Boardmans, who died June 13th 1877 in her 75th year. also John their son who died Sep^r 18th 1873 in his 38th year. Also Eliza his wife who died Aug^t 3rd 1875 aged 43 years.

188 Thom^s SHAW, Barracks, who died Oct^r 7th 1850 ? aged 64 years. Joseph his son who died Oct^t 11th 1851 aged 15 years.

INDEX

BAXTER	156
BENTLEY	154
BLACKBURN	160,161
BOTTOMLEY	165,175
BRIERLEY	181
BUCKLEY	155,156,166 176,177,180
BYRAM/BYROM	153,168,169
CARTER	171
HALL	148
HENTHORN	187
HOLROYD	166
HOWARD	178
KENWORTHY	147,154,158,172,183,184
LAWTON	164
LEES	186
MALLALIEU	159
MELLOR	167
OGDEN	151
PICKUP	149
SHAW	176,188
WHITEHEAD/ WHITHEAD	150,163,179, 182,185
WINTERBOTTOM	152,157,162,170,173
WRIGLEY	152,174,176

Howard Lambert

A & J Butterworth Ltd, Haulage Contractors of Greenfield

In the centre of Greenfield, off Chew Valley Road, is the haulage business of "A & J Butterworth Ltd", started in 1912 by Albert and James Butterworth (son and father). At first it was called "James Butterworth & Sons". In November 1921 it was incorporated and changed its name to "A & J Butterworth Ltd".

The company's first business was haulage, taxi work, motor repairs, petrol sales and coach trips. An early photograph (1919) shows a 'charabanc' called "Lady Dorothy" ready for setting off on a trip. It was used as a coach at weekends, but during the week the seats would be taken away to make room for goods.

Early advertisements show the business as "Haulage Contractors, Open & Closed Cars for Hire and Motor Repairs Undertaken".

Albert was the stepfather of the present Managing Director, Kenneth Wood, his mother having married her late husband's cousin. It was a schoolboy's dream come true; Kenneth used to go to Uncle Albert's and watch the wagons come in and out, now he was going to live there. He was 10 when they moved there in 1941. He soon took an active part in the firm - up early to see the wagons off, helping to get them started, being encouraged in the decisions of buying new vehicles. (Even driving them before he was officially old enough).

In 1941 the vehicles were a Commer (DWW 454), new in 1939 - we still have the original receipt for this vehicle; a Bedford (BLG 941), new in 1939; a Morris Commercial (YG 6815), new in 1934; and a small Bedford (CWT 368), new in 1934/5. Before this there was a Brown Bedford, but we think it went in part exchange for the Commer. EWU 998 was a Commer bought in 1944/ 1945 after the war. The firm had had a vehicle commandeered during the war and were given a Priority Certificate, which was used for this Commer. Then a GMC left-hand drive (GTD 396) was bought. This went to the Government on nationalisation in 1947. The company had the option of being taken over completely, or the Government could take over an equivalent number of vehicles that did work over twenty-five miles away from the base - we chose the latter option, and got by without one of our trucks. In 1948 there were three vehicles, one of which spent all summer bringing fresh fruit from Worcester for Robertson's Jam at Ashton-under-Lyne.

The first diesel truck was purchased in 1955, a Commer with a Perkins P6 engine; in fact it looked quite a wreck. After a lot of bartering it was finally purchased for £195.00. Albert built a body for it and a brand new cab was put on for £95.00. This was the first wagon to be painted in the deep crimson livery with gold lettering then adopted by the company; today red with grey lettering is used. Jobs like this - repainting, repairs and building - were done in the company's own garage, and still are today.

The first vehicle that Albert and Kenneth bought was a Commer (JKL 841) in 1951. This was the first vehicle to be converted from a petrol engine to a diesel engine.

The first Leyland Comet was bought in October 1960 (NNE 84) from Stanley Hughes in Bradford (it was built in 1953). After many miles' service it

was put in the corner of the garage in the mid-1970's, where it has stood ever since. Affectionately called "Albert", it is slowly being renovated. The engine first ran on 25th February 1997 and it first moved outside into the yard on 10th March 1997, the first time in over twenty years.

During the 1970's we expanded into 'artic's'.. Albert hadn't liked them, so it was after his death in 1971 that we first started. In 1985 a decision was made and the company bought a Scania 112 (D563 OND), from West Pennine Scania. It seemed a lot of money at the time - but money well spent. It is still in the fleet today, along with a Leyland Freighter bought in 1986 (E243 AVM). In 1987 another Scania was bought. In 1993 a small Leyland Roadrunner (G807 ODH) was added to the fleet. (This was the inspiration behind Tiny Tim - the little truck with a POD on top - stories which the children have enjoyed very much). We also have three 40 foot trailers, all Crane Fruehauf - known as CF3, CF4 and CF5.

The company is still run by Kenneth, although he officially retired in 1996. His wife, June, joined the company when they married in 1956. She helps with the accounts and in the shop. John, his son, joined the company on leaving school in 1974, and attended college for the Motor Industry's exams. Today he drives, and does the maintenance and servicing of the vehicles. Kate, the daughter, joined the company in 1988, and helps with the running of the office.

The drivers are Ian Lawton, who started in 1973, and drives the Scantias; John Bennett, who began in 1979, and drives the Leyland Freighter; Simon Cuthill, who joined in 1995, and drives the Scantias and the Roadrunner.

The main part of our business comes from Tanner Bros. (Greenfield) Ltd. They started in 1911, and we have worked together ever since. Our accounting books date back to 1921, and we are still delivering to the same places. We have carried all sorts of goods - wool from the moorland farms to the Wool Exchange in Bradford; pickles and gherkins to the Midlands; carpet yarn; plastic garden frames; plastic scrap; dental floss; and tyre cord for Tanners, to name but a few. Today the Midlands, London and the South East coast, the North East and Scotland, are our usual areas of delivery, with plenty of local work to Lancashire, Yorkshire and Cheshire.

The cycle shop we run was originally a motor car spares shop, at the time we sold petrol and did repairs. The repair business and petrol sales finished in the 1970's, when Oldham Council introduced special licences and conditions for selling petrol. (The taxi business also finished then). The cycle shop became more of a business when John started to work for the company. It became very popular with the introduction of mountain bikes in the 1980s; with all the hills around Greenfield, you can see why mountain bikes are so popular. The cycles we stock are Emmelle, Moore Large and Diamond Back cycles. These are supplied by Moore Large & Co. of Derby, and H & J Supplies of Manchester.

Business is steady, we can't complain - at least we are still here after 85 years to tell the tale; a lot of our old customers and competitors didn't make it.

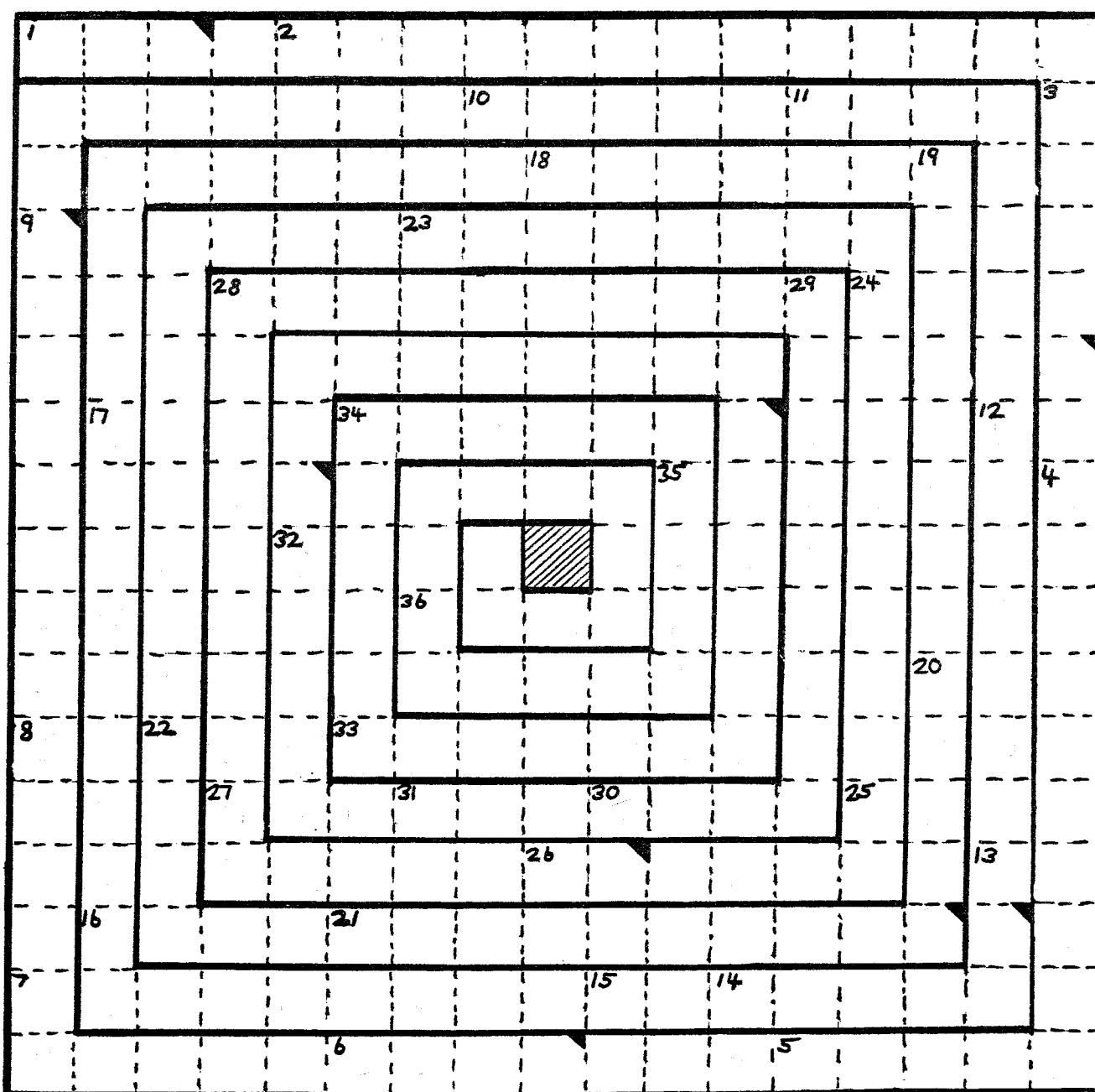
Here's to 100 years. With five grandchildren growing up, it is quite possible. John has Philip - aged 13, David aged 8 and Thomas aged 6. Kate has Jonathan aged 6 and Olivia aged 2. Who knows what the next years will bring, but let's hope it's good.

SADDLEWORTH SPIRAL PUZZLE

Give your knowledge of Saddleworth a stiff test. The solutions to the clues are mostly places in the district, with one or two local personalities thrown in for good measure. An old ordnance survey map would help - the Historical Society's own "Saddleworth Surveyed" would be ideal - as some of the buildings involved have been demolished. Please note that present-day spellings are used in all cases.

To fill in the grid, start at the top left-hand corner and work round clockwise. The last letter of each word forms the first letter of the next. When complete go round clockwise again; the letters in the squares with a black triangle will spell a well-known feature near Greenfield.

The solutions will be found at the back.



CLUES

1. George Bernard's place near Uppermill? (5)
2. Environmentally-sound swains near Greenfield (9, 5)
3. Source of mid-day heat above Greenfield (4, 3)
4. A way of crossing from 31st December to 1st January near Denshaw (3, 5, 6)
5. Rival site for English Civil War battle near Delph? (4, 4)
6. A way in for little people in Castleshaw Valley (3, 4)
7. Mill that kept a sharp eye on Delph? (5)
8. Not an 'eavenly Saddleworth artist! (5, 4)
9. Healthy field in Uppermill (4, 6)
10. The Workers' Educational Association has the means to open a door in Diggle (6)
11. Go to a knoll below Pots and Pans for tall tales (5, 4)
12. Harvey Oswald gets annoyed near Diggle (3, 5)
13. Uncomfortable place to sleep near Delph? (7)
14. Donkey backs-up in Uppermill (3)
15. Steal the queen's forehead at Dobcross! (6, 4)
16. A house near Grotton, secluded but draughty! (5, 4)
17. German children breathe in sharply at a farm near Dovestone Reservoir (6, 6)
18. Are you sure the Dobcross reverend was a sort of D.D.: swear it? (7)
19. A chief follower of Baden-Powell near High Moor (9)
20. A Denshaw lady brings her new husband a lot of water (5, 9)
21. No thoroughfare in the centre of Greenfield (4, 3)
22. A Saddleworth village takes shape in the mist; products of a famous factory in Harropdale (8, 5)
23. Are cattle left on the road outside the "White Hart" at Lydgate? (9)
24. Placid liquid at Dobcross (9)
25. Colourful to look at, but shouldn't it read "Royal George" nowadays? (3, 4)
26. Useful present for a farmer near Slackcote (3, 4)
27. Provision for the homeless by Platting Road (3, 6)
28. Not his stream between south and east near Saddleworth Church (10)
29. Need authority to cultivate the moors? The curate clones will sort it (9, 3)
30. This mill off Friezland Lane left a distinctive taste in the mouth (4)
31. Sounds like this farm near Wallhill is bereft (7)
32. The Uppermill flea-pit was a grand place (11, 6, 6)
33. Take a wander for a change and find a mill in Greenfield (6)
34. The candle-flame is fed from all points near Runninghill Gate (7)
35. A loose top on the slopes of Alphin. Not a good person to run a school perhaps? (5, 4)
36. You can rely on finding a weeping tree by Church Road in Uppermill, but didn't it used to be an important factory, drat it? (3, 4, 4)

Letters

29 The Farthings
Astley Village
Chorley
PR7 1TP
Lancashire

Tel: 01257 266724

Dear Editor

I am interested in joining your Society and have sent a letter to Mrs Broadbent. It is surprising that in my circle of friends I know Broadbents, Bardsley, Gartside and Dunkerley families who are all connected in the past with Saddleworth.

I have recently started doing family history research, and discovered that my Great Great Great Grandparents and family lived in the Saddleworth area from at least the 1700s to 1900s and possibly to this day.

My mother's maiden name is Higginbottom, but I know that in 1841 it was spelt as Heginbottom, then became Hegginbottom and eventually to how it is spelt today.

My Great Great Great Grandparents were Thomas Heginbottom who married Betty Lees on 4th June 1818 at St Chad's. The address on the baptism certificate of their first child is Field Green and I have as yet failed to find out where this was. Their first child Ann was baptised on 4th April 1819, followed by Samuel 2nd November 1822, Mary 13th December 1827, Alice 8th June 1827, John 14th February 1830, Nancy 10th June 1832, Sarah 21st September 1834 and Betty 17th November 1836. the family home was Slack Head, high on the hillside overlooking the Forty Row of cottages now known as Hey Top, and they were all in the weaving trade.

Betty was buried aged forty years on the 16th November 1836 and her baby Betty was baptised the next day. Betty junior was buried on the 31st January 1837. The eldest daughter Ann is shown as a housekeeper on the census and obviously looked after the children and home, and to my knowledge up to 1871 never married.

I have looked at all the Census from 1841 to 1891 and have lost several of the family and cannot find out what happened to them. Alice was not on the 1841 Census, Mary was not on the 1851 Census and John was not on the 1861 Census. Samuel had left home and married (prior to 1851) Sarah Bradbury, whose mother was Hannah Bradbury (aged 51, a woollen burler in 1861), and he had five children in 1861.

By 1871 Thomas Higginbottom was 67, Ann his daughter was 42, Nancy was 29, Sarah was 26 and Nancy's illegitimate son Samuel was 7. Samuel is my Great Grandad; he left Saddleworth in his late teens, early twenties. He married Margaret Eilbeck in Liverpool in 1876 (her family was from Egremont, Cumberland). He left a notebook with all the addresses he had lived at throughout his life, plus births and deaths of family members, but no mention of his Saddleworth connections. The move to Liverpool was obviously to forget his past. The only member of the family I have managed

to keep track of is Samuel senior; he and his family stayed in Saddleworth and I know of the family up to 1891, then as yet have gone no further.

I have checked the Parish Register for St Chad's for the baptisms of Thomas Heginbottom and Betty Lees. Unfortunately there are more than one of them.

I have found a marriage of a Samuel Heginbottom, sojourner, and Mary Scholefield, married on 26th April 1791; and a Thomas Heginbottom baptised on the 9th March 1794, the son of Samuel and Mary of Whitelee.

There is also a marriage for a John Lees and Ann Lees on 8th October 1795; and the baptism of Betty Lees, daughter of John and Ann Lees of Pobjgreen on 9th March 1797.

As I said there are others, but these seem to be the closest match.

Can any of your members help me in my search? Maybe someone has done a study of the Heginbottom / Heggibottom / Higginbottom, Bradbury and Lees families which may shed some light on my search.

The Rev. John Heginbottom of St Chad's has a lot of descendants and looking at the registers there are a few Heginbottoms in the 1600s but the majority are shown after the Vicar came to Saddleworth in 1721. I would dearly love to see what he looked like. Does anyone know if there are any pictures of him and his family? I do not know if there is a family link, but I have read so much about the man and his family I am curious to see what they looked like. The only photograph I have of my Saddleworth family is of my Great Grandad, Samuel Higginbottom, aged about 83, the year before he died. It is very frustrating not to be able to put a face to a name.

Have your members ever heard of Samuel Wasse Higginbottom? Born in 1853 in Duckinfield, the son of T. R. Higginbottom of Staleybridge, he became MP for West Derby, Liverpool, in 1900 and owned coalmines throughout Lancashire, Staffordshire and Wales. He was also a ship owner. He married Ann Sharrock in 1877 and lived in Birkenhead. He died aged 49 in 1902, and from his numerous obituaries was a very well liked man.

Has anyone ever done an article on an accident which occurred at Greenfield on May 10th 1864 when an unfinished factory chimney collapsed, killing eleven people (ten from a family called Jefferey)? The report in the "Oldham Standard" of 14th May stated that the eldest daughter was badly bruised but I found her burial on 16th May, leaving five year old Ellen an orphan. I wonder what happened to her? A family called Hammond were also involved in the accident, but none of the family was killed. The father was a coachman for the Royal George.

I came across the burials in a Parish Register for Christ Church, Friezland. I found the report in the "Oldham Standard" for the 14th May, page 8, and there will be a follow-up as the inquest was adjourned to the 19th May, so until I return to Oldham I do not know the result of the inquest. All this information was found at the Local Studies Library in Union Street. I have enclosed information taken from the Parish Register. The newspaper report is very explicit regarding the injuries, and not for the squeamish to read.

I look forward to hearing from you.

Yours sincerely

Patricia A Pearson (Mrs)

- - - - -

Christ Church, Friezland

Killed by the fall of a new unfinished factory chimney on his home on the night of Tuesday May 10th 1864.

Buried May 13th 1864

Royal George

Harry Jefferey	Aged 46
Ann Jefferey	42
Emma Jefferey	10 months (Ann and Emma in one coffin)
Frederick	21
William	15
James	13
Sarah	11
Edward	9
Mary	7

ALL BURIED THE SAME DAY

John William Carter - Royal George. Aged 11 years. Buried 13.5.1864

Elizabeth Jefferey - Royal George. Aged 17 years. Buried 16.5.1864

- - - - -

56 High Street
OL3 6HA

Dear Editor,

Above Castleshaw Upper Reservoir, on the little rise called Oaken Hill, is the ruin of an old farm, marked on the early Ordnance maps as Oaken Hill Lee Farm. Running along the south side of the ruin, and continuing in a perfectly straight line from just above the slope of the reservoir

to the boundary wall, is a well worn depression, presumably an old road. At the wall, where it meets the footpath and where there is a stile in the wall, the ground becomes very wet and flooded, so that there is no sign of the road thereafter.

This track is marked on the first map as a road, although, as now, it goes nowhere. The slope above, rising towards Stanedge, may have been altered by the action of the streams, and further up the surface is rocky. the depression does not quite line up with the Roman road, but is not far off. I wonder if any members have any suggestions as to what might have caused this track. I would be pleased to act as a guide on an expedition - wellies required.

Yours sincerely

Eric Watson

- - - - -

1 Lowman Way
Aylesbury
Bucks
HP21 9JW

21 April 1997

Dear Editor

I have had several visits to the area and Oldham Library with no success in tracing an ancestor. Therefore I am writing to enquire if any members have any information which may help me. I am interested in the parents of: JAMES JOHN WHITEHEAD Born 1835/36 in Saddleworth.

His parents were:

THOMAS WHITEHEAD AND MARY BOTTOMLEY.

James left England in the 1850s to settle in Australia. I would be very grateful for any information or leads to help me.

Yours sincerely

Diane Cooper

- - - - -

"Rimmon"
Braystones Road
Beckermeth
Cumbria
CA21 2XX

Telephone Number: 01946 841 708

Dear Editor,

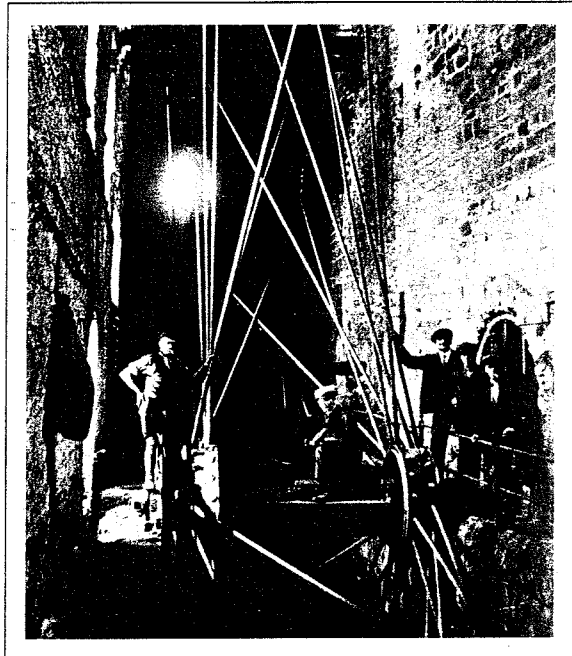
Diggle Mill Water Wheel

I am seeking information which relates to the wheel, especially in connection with the head and tail races, but anything about the wheel would be welcome.

Thank you

Yours sincerely

Albert Broadbent



127, Norman Street
Middleton
Manchester
M24 2JL

Dear Editor,

I have made an index of all surnames in the 1841 Census for Saddleworth. This will go into the "Bulletin" before long. In the meantime if any member would like some information on this topic, please write to me with a s.a.e.

Yours sincerely

Dannie Wright

Windy Nook
1, Lane
Grotton
Oldham
OL4 5RH

Dear Editor,

I suspect that Ammon Wrigley was possibly playing 'agent provocateur' in his forceful dismissing of the use of Standedge or perhaps, unusually, he had not really looked into the matter. Mr Chris Ruddy in the newsletter of the Winter 1996 Bulletin evidently has and he quotes early forms as 'Stanheges' and 'Stonegge'.

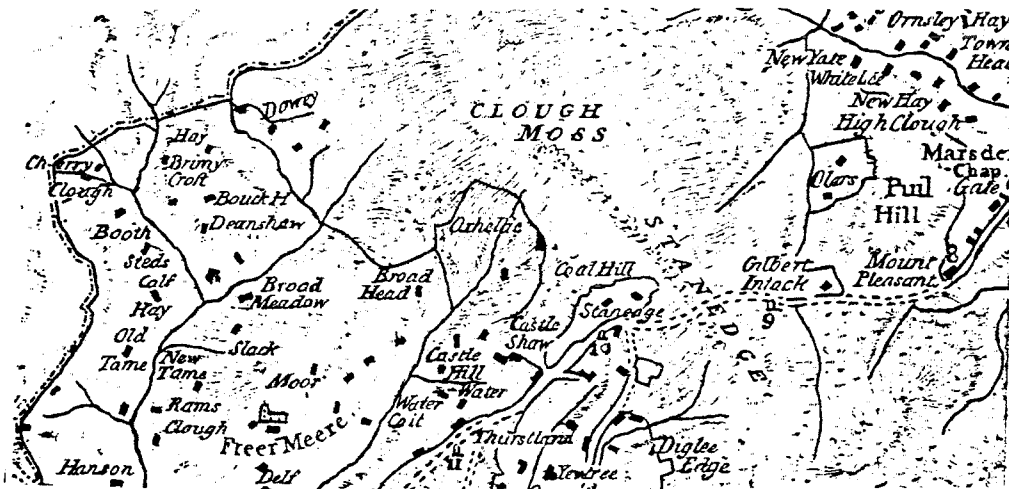
Ekwell in his Oxford Dictionary of Place Names does not give an entry to either Standedge or Stanage, but further investigation gives the Old English Stān = Stone and an entry for High Edge in Derbyshire gives early forms Heyheg AD 1251 (Ch) and Highhegge AD 1330 (FA) from the O. E. 'hea-ecg' meaning 'high edge or ridge'.

Thus Highhegge (High Edge) compares with Mr Ruddy's Stanhege (Stony edge or Stony ridge). However, this still does not solve the problem of where the 'd' comes from. It could simply be a misinterpretation by some scribe of the 'h' and was written as a 'd'; although I must say that, looking at early scripts, (though not so early as 1330) it is difficult to justify this argument. Interestingly in another entry in Ekwell for Standlake (Oxford) - Stanlache (1155) and Standlynch (Wiltshire) - Stanlinch (1319) he states simply that "a 'd' was developed between the 'n' and the 'l'", but does not suggest a reason.

The fact that the insertion of the 'd' makes the name more difficult to pronounce only adds to the mystery. Perhaps, after all, Ammon did go into the matter and did not have any more luck than I.

Yours sincerely

David Latimer



Jeffreys's map 1775

INDEX TO VOLUME 26

PEOPLE*

Ashworth	2:6	Mallalieu	1:22, 1:23, 2:19 – 2:22
Barnetts	4:3	Marshall	2:17
Bennett	2:1	Meadowcroft	3:1
Blackburn	2:12, 4:14	Mellor	1:22, 2:12
Bottomley	2:12, 3:11, 4:4	Mills	2:14
Bradbury	1:24, 2:14, 2:17, 2:21, 2:22, 2:23, 3:10, 3:13	Milnes	4:5
Braithwaite	4:13	Moore	2:14
Brideoak	4:2	Murgatroyde	1:22
Brierley	2:14, 2:17, 3:10, 3:12	Nightingale	4:14
Britain	4:14	Noble	2:8
Broadbent	2:22, 3:11, 4:4	Nutter	1:20
Brook	3:10	Osbaldeston	4:18
Buckley	1:20, 1:21, 1:23, 2:6, 2:15, 2:20, 2:21	Parry	3:7
Butterworth	2:8	Pearson	4:18
Byrom	1:22, 2:14, 4:4	Platt	1:22, 2:15, 2:16
Carter	2:17	Ponsonby	4:13
Chapman	2:16	Plotts	4:3
Cockcroft	3:10	Quarmby	4:4
Colebough	3:7	Radcliffe	3:10, 3:11
Dearnley	2:7	Radford	2:20
Eastwood	2:13, 4:13	Rhodes	2:8, 2:16, 3:10 – 3:13, 4:16, 4:17
Ellis	4:3	Schofield	1:22, 2:15, 2:18, 3:12, 4:3, 4:5, 4:13
Emmot	2:1	Scott	4:14
Farrand	2:22	Shaw	2:14, 3:10, 4:4, 4:5
Firth	4:5	Slaughter	3:6
Fletcher	4:13	Spencer	2:7
Fry	2:8	Stott	4:13
Gartside	2:16	Sutcliffe	2:16
Green	4:4	Taylor	2:6, 2:8
Haigh	3:12	Tweed	4:17
Heap	2:16	Wagstaff	2:18
Hirst	4:3	Waring	2:12
Holbert	1:21, 1:22	Watson	2:7
Holden	3:10, 3:11	Whitehead	1:22, 2:7, 2:19, 3:12
Holroyd	2:17, 4:3	Winterbottom	2:16, 3:10, 4:2, 4:3
Horsfall	3:13	Wood	2:17, 3:13
Hudson	2:19	Wrigley	1:22, 2:14, 2:15, 2:18, 3:12, 4:3, 4:5
Kenworthy	2:14, 2:17, 3:12, 4:17		
Lawton	1:22, 2:18		
Lees	4:3		
Leister	3:12		
Lister	1:23		
Longbottom	2:16, 4:4		
Lunn	2:7		

PLACES: PART ONE,

SADDLEWORTH

Ackers	3:12
Austerlands	3:15, 3:16
Bank Gap	4:4
Barn	4:3

Beswicks	4:3	Griffin Inn (Grange)	4:5
Black Bull Inn (Grange)	4:5	Grove cottages	2:17
Bleakheynook	2:15	Heights Church	4:4
Bridge House	2:12	Heights Inn	4:4
Broad Meadow	2:14	Hey Top	3:1- 3:8, 3:14, 3:15
Brow	3:12	High Stile	2:20
Brun	3:13	High Street (Uppermill)	3:19 - 3:22
Brun Barn	3:13	Higher Hill Top	4:3
Brun Clough	3:12, 3:13	Hollingrove	2:17, 2:10
Butterhouse	2:15	Hollyville	2:15
Cabin	4:13	Horest Mill	4:4
Castleshaw Roman Fort	1:2 - 1:18	Hull Mill	2:17, 4:5
Causeway Sett	2:17	Intake (Standedge)	3:10, 3:11
Cherry Clough	2:17	Johnny Mill	4:5
Chew Reservoir	3:1	Knarr	2:14, 4:3
Clothiers Arms	(See Heights Inn)	Knarr Barn Farm	4:2
Coldhouse	4:13	Knott Hill	4:3
Colls	4:3	Knott Hill Farm	4:3
Colt Hill	3:10	Linfitts Mill	4:4
Cross Keys Inn, Delph	4:2	Lower Hill Top	4:3, 4:7
Cross Keys Inn, Uppermill	1:23, 4:2	Lydgate	3:15
Crowstone Gate	4:4	Millcroft	4:5
Daisy Hill	4:2, 4:3	Millgate (Delph)	2:19, 3:16 - 3:19
Dale	4:5	Moorcroft	2:16
Deanhead	3:11, 3:12	Near Spring	3:10
Deanhead Clough	3:11	Nield Mill	4:5
Deanhead Mill	3:12	Old Tame Mill	4:4
Delph	2:14, 2:16 - 2:18, 3:16	Paradise	4:5
Delph Independent Chapel	4:14	Pingle Mill	4:4
Delph Slack	4:4	Platt Hill	2:16
Denshaw	2:14, 2:16	Punchbowl Inn	(See Heights Inn)
Diggle	2:8	Quick	2:16
Diggle Edge	2:17	Ridge	2:14
Dobcross	2:12, 2:15, 2:18	Roebucklow	2:16
Dry Bridge	3:13	Roughlow	4:13
Dumfries	2:14	Roundhill	2:16
Edge End (Dobcross)	3:10	Royal Oak Inn	(See Heights Inn)
Fairbanks	2:21	Runninghill	2:15, 2:22
Forty Row	(See Hey Top)	Saddleworth Picture Palace	4:18
Friarmere Model Farm	4:4	Saddleworth Vicarage	2:12
Friezland Hall	4:4	Shepherds Green	3:10
Garners	4:3	Slackcote	4:4
George and Dragon Inn (Waterhead)	4:13	Slackfield	4:3
Grange	4:5	Song Mill	4:3
Green Ash	2:14, 4:4	Spring Hill (School)	4:4
Green Field	2:6 - 2:8, 2:16, 3:1, 3:5, 3:6	Spring House	2:15
Greenfield Mill	3:14	Standedge Green	3:10
		Stonebreaks	2:15

Stones	2:18
Stoneswood House	4:3
Strines	3:14, 4:13
Strinesdale	3:14
Summer Hill	4:4
Tamewater	3:15
The lighthouse (Greenfield)	3:6, 3:7
Thorns Clough	3:10
Thurston Clough	4:3
Tunstead	2:18
Uppermill	2:6 - 2:8, 2:12, 2:17, 3:19, 4:17, 4:18
Valenciennes	4:3
Wade Hill	3:10
Walk Mill	2:13
Wallhill Clough	3:10
Waterhead Mill	4:13
Waters Clough	1:2, 1:17
Wellhead	2:14, 4:4
Wharmton	3:10
Wharmton Towers	1:23
Wickens	2:21
Woodmans Farm	4:3
Woolroad	2:16
Wrigleys	2:22

PLACES: PART TWO, OUTSIDE
SADDLEWORTH

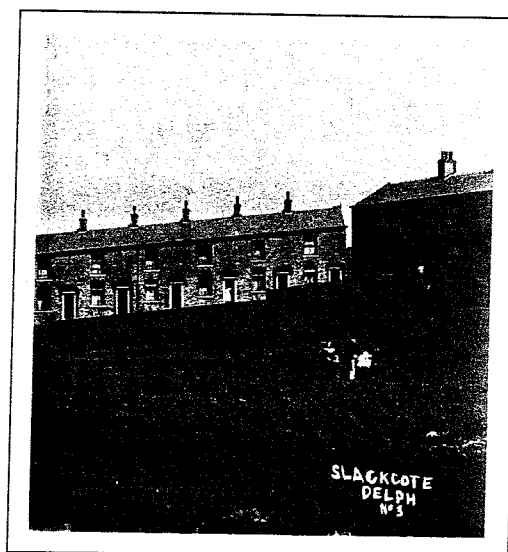
Athens	2:10
Cambridge	2:19
Clay Cottages (Mossley)	2:3
Derby	3:7
Hat and Feathers Inn (Oldham)	4:13
Heckmondwike	4:14
Holbeck (Leeds)	4:14
Leeds Parish Church	4:14
Liverpool Lying-in Hospital	4:14
Llandudno	2:19
Micklehurst	2:1
Mossley	2:1, 2:3
Normanton (Derby)	3:7
Oldham	2:12, 2:14, 3:14, 3:23, 3:24, 4:4
Olympia	2:9, 2:10
Oxford	2:19
Philadelphia (U.S.A.)	1:20, 1:22
Pule Hill	1:18
Roaches	2:1

Slack (Roman) Fort	1:18
South Cave	4:14
Sparta	2:10
Tockholes (Blackburn)	4:14
York	2:19

MISCELLANEOUS

"Backstoners"	4:5
Bull Baiting	4:4
Chester-York Roman Road	1:2, 1:17
Chew Reservoir Light Railway	3:3, 3:4
Cock Fighting	4:4
Diggle-Stalybridge Railway	2:1, 2:3
Friarmere Model Farm	4:4
Greenfield Cooperative Society	3:2
Huddersfield Narrow Canal	2:3
"Knockers - up"	3:2
Mossley Gas Works Railway	2:3 - 2:5
Saddleworth Picture Palace	4:18
Stalybrige Gas Company	2:1
Sunday School (Delph Wesleyan)	2:19
Sunday School (Hey Top)	1:3
Susquehanna (19 th Century Ship)	1:20
Whitsuntide	3:5

*NOTE The "people" category has been simplified because of the sheer volume of names mentioned in the "Bulletin". All surnames given in the text are listed here. This is intended to be a rough guide only but, hopefully, will assist family historians in particular.

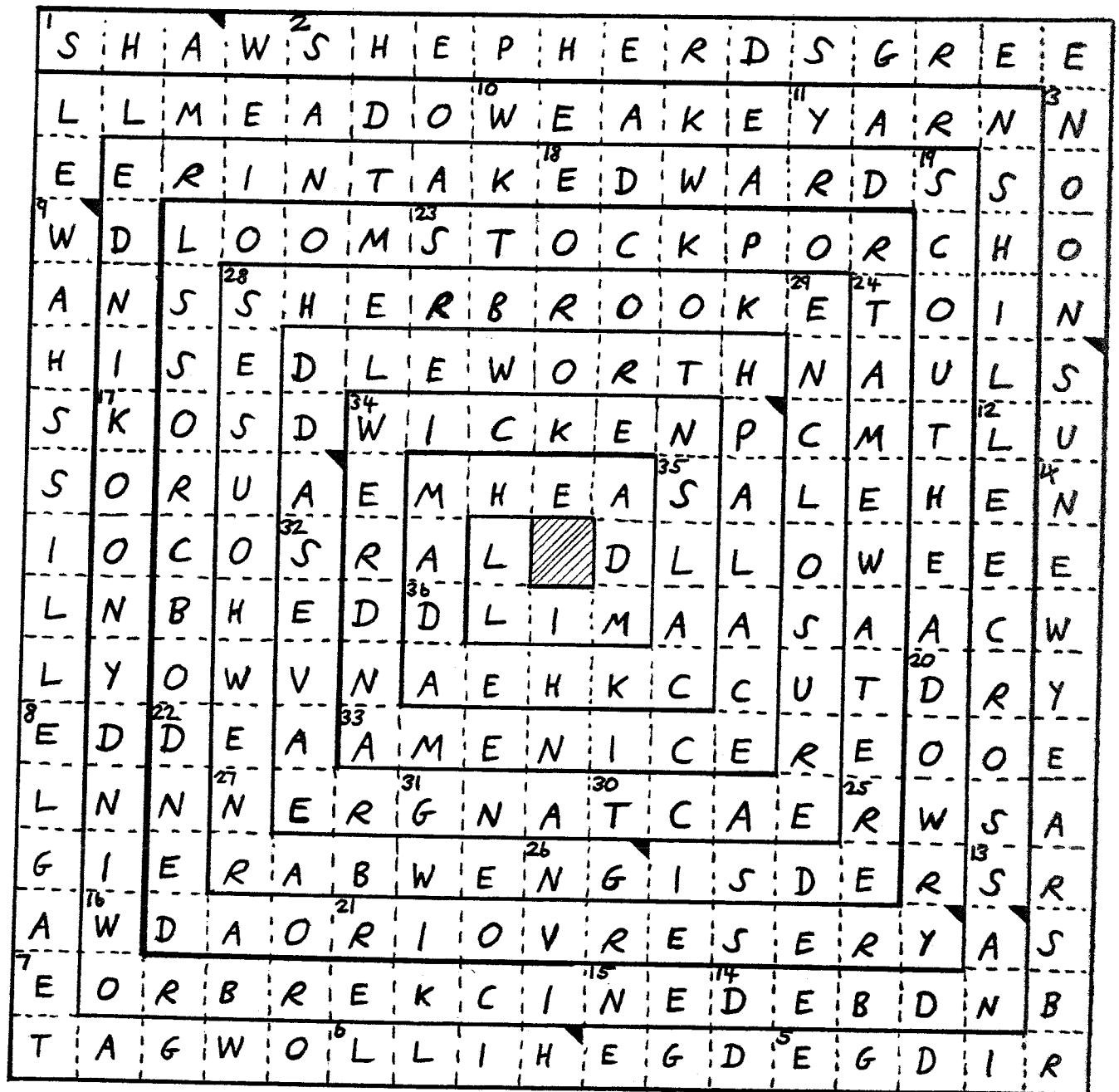


SOLUTION TO THE SADDLEWORTH SPIRAL PUZZLE (see page 16)

To read the answers, start at the top left-hand corner and work round clockwise to the centre; the last letter of each word forms the first of the next.

Working round in the same fashion, the squares with black triangles spell 'ASHWAY GAP.'

Michael Fox



Enquiries about membership of the Saddleworth Historical Society should be sent to:

Mrs E Broadbent
30, Beechfield
Grasscroft
Oldham
OL4 4EL

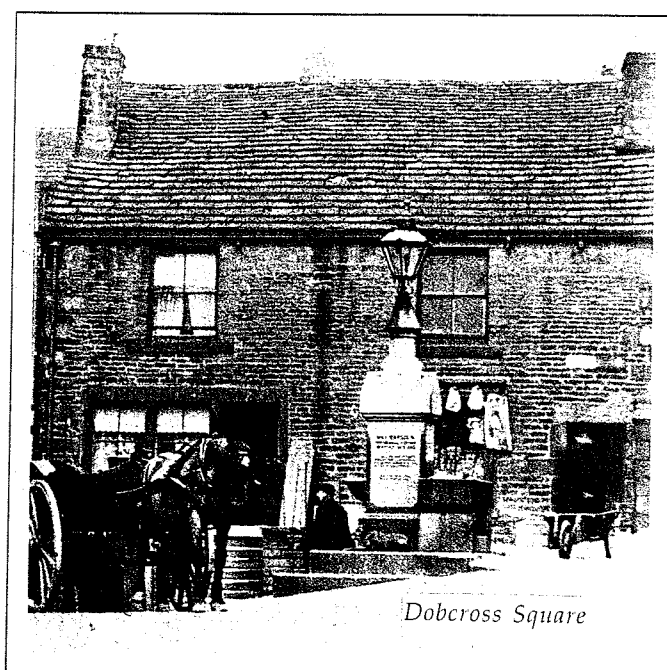
The Editor of the "Bulletin" is:

Michael Fox
4, West Mount
Shaw Hall Bank Road
Greenfield
Oldham
OL3 7LF

Contributions

The "Bulletin's" aim is to reflect and encourage interest in all aspects of the history of Saddleworth. It relies on a regular supply of articles, letters, short reviews etc from members and others. Fresh material is required constantly and should be sent to the Editor, who will be happy to discuss ideas for articles with anyone considering preparing one. Articles need not be confined to subjects within Saddleworth's borders, but preferably should have some connection with the district.

The Autumn "Bulletin" is due for publication on the 31st October 1997. All material to the Editor by the 15th October please.



Saddleworth Historical Society

PUBLICATIONS

BOOKS

SADDLEWORTH 1914 - 1919

The Experience of a Pennine community during the Great War
by K W Mitchinson

Soft Backed £14.00 Add £2.50 for postage
Hard Backed £16.00 Add £3.15 for postage
Delivered free in Saddleworth

CHERRY VALLEY CHRONICLES

transcribed by Maurice Dennett
Letters from Thomas Buckley and Family
Immigrants to Cherry Valley and Milbury, Massachusetts, USA
to his son Ralph Buckley and family, of Dobcross and Delph,
Saddleworth.

£16.50

PASSAGE THROUGH TIME

A History of Saddleworth Roads and Trackways
by Bernard Barnes

£5.95

ST ANNE'S LYDGATE

The story of a Pennine Parish
by Canon C C W Airne

WITH AMMON WRIGLEY IN SADDLEWORTH

by Sam Seville
son-in-law and companion of the Saddleworth writer and poet

£2.95

THE SADDLEWORTH STORY

A WEA Publication
A collection of historical essays

£2.00

HUDDERSFIELD NARROW CANAL

A compendium of articles from the
Saddleworth Historical Society Bulletins
on the construction of the Canal.
Published for the Bicentenary 1794 - 1994

£3.60

LOCAL INTEREST TRAILS

Walks around Saddleworth: illustrated with notes on local history and landscape.

1. DELPH, HEIGHTS AND GRANGE
2. UPPERMILL
3. GREENFIELD
4. HUDDERSFIELD NARROW CANAL
5. GRASSCROFT
6. DENSHAW
7. DELPH
8. LYDGATE AND GROTTON
9. DOBCROSS

90p each

MAPS

STREET GUIDE TO SADDLEWORTH
An A2 comprehensive Street Map of the area
Published by the Society, May 1995

£1.20

COUNTRYSIDE GUIDES

Large scale maps of the district, showing public footpaths, amenities and features of special interest: with notes on the local and natural history of Saddleworth.

SADDLEWORTH NORTH

£2.40

SADDLEWORTH SOUTH

£2.40

CHURCHYARD PLAN

A Plan of the Old Graveyard at Saddleworth Church

£1.80

PAMPHLETS

ADDRESS TO THE VARIOUS CLASSES OF MEN IN SADDLEWORTH
by Daniel Nield

Shewing the necessity of supporting the Plan laid down
for Augmenting the Price of Labour in the Woollen Manufactory:
Describing the Distressed situation of the Parish in 1795.

£0.75

* * * * *

Cheques made payable to the Saddleworth Historical Society and forwarded to Mr. B.E. Jackson, 7 Slackcote, DELPH, Oldham. OL3 5TW
Tel. No. 0145 787 4530. Add 20% postage and packing for delivery outside Saddleworth.

SADDLEWORTH HISTORICAL SOCIETY

NEWSLETTER SUMMER 1997

"Around the church the hamlets grew, their names
enchant me still,
The Fold, the Clough, and Wickens and
ancient Runninghill,
Pobgreen and Primrose, Hollygrove: each field
and farm and walls,
This was the cradle of our race, my
heart salutes them all!"

Vera Winterbottom.

The Summer Trip, in July, to the quiet bit of the Lake District which includes Muncaster Castle and the Ravenglass-Eskdale Railway proved to be very enjoyable. The magnificent views from the Castle, the unique Bird Sanctuary and the novelty of the narrow-gauge Railway made the circuitous journey worthwhile. Please do not tell too many people about it because if they all go it will be spoiled. Many thanks to Wendy Murray for the splendid arrangements.

The final lecture of the season was given by Paul Sillitoe, the Archivist of the Oldham Local Studies Library, entitled "Wrecking or Restoration? - Recovery or Records: Some Case Studies in Canal Restoration." In which he suggested that the aim of canal restoration of an original waterway is to provide navigation, thus preserving something of the past and restoring it to the former condition in the true style and manner. With the expensive restoration of the Stanedge Tunnel being proposed, Paul Sillitoe saw the Historical Society beholdent to using its best efforts to ensure this whole project is correctly recorded for posterity.

Forthcoming Society Lecture Programme at the Museum.

The syllabus for our new programme of lectures commencing at 7.30 p.m., is enclosed with this Bulletin, the initial lectures being detailed as follows:-

Thursday
16th October, 1997

Belle Vue Memories: A History of the
Zoological Gardens. Roy Nichols.

In November.
Date to be advised.

The Museum of the Manchesters.

Thursday
4th December, 1997

Annual General Meeting.
Followed by a slide show of Ammon Wrigley
photographs, kindly released from the
Ruth Greenwood Collection.

MYSTERY SOLVED !

Our Chairman, Mr. Jim Carr, is indebted to Mr. Ian Barrell, the barber, of High Street, Uppermill, for both posing and for the solution to the Diggle pop bottle mystery.

When the Diggle stretch of the Huddersfield Narrow Canal was being renovated these last two years, a worker on the site discovered a pop bottle in the debris being cleared away. He brought it into Ian's barber-shop when he came in for a haircut and then the search began for last century's Diggle mineral water factory. Another customer, Mr. J.W. Sykes, a Society Member and a retired tea-planter from Greenfield (not much call for tea-planting in Greenfield) researched his namesake, Mr. Percival Poulton Sykes, and came up with the following details.

1861 census: Percival Poulton Sykes, aged 6 years, son of John Sykes, who owned Wrigley Mill on Ward Lane, a woollen mill with 23 employees. (P.P.S. was grandson of Benjamin Sykes). His father and grandfather founded Wrigley Mill Methodist Church in the factory on Ward Lane.

1871 census John Sykes mill making felt with a workforce of eight.

1881 census Percival Poulton Sykes, aged 26, born Slaithwaite, Yorks. Aerated Water Manufacturer. Living at Hollygrove House, Diggle. Father not mentioned, but mother a farmer at Hollygrove House.

1880 Worralls Directory - Saddleworth, 'Miscellaneous'

Percival & Sykes, Mineral Water Manufacturers,
Warth Mill, Diggle.

Comment:- The name, was probably a printer's error and should have read:- Percival P. Sykes.

These are the only records located, that connect a P.P. Sykes of Diggle, with the manufacture of Aerated Water.

1880 Worralls Directory - Saddleworth.

Others with commercial activities at Warth Mill, Diggle, at the same date.

Joseph Shaw & Co. - Woollen Cloth and Flannel Manufacturers,
Rasping Mills, Delph, and Warth Mill, Diggle.

George Hartley - Shawl & Cloth Finisher and Fulling Miller.
Warth Mill, Diggle.

No further information can be gleaned until the next census details are released in 2001.

APPEAL If any Members have details or photographs connected with the Saddleworth Volunteers of 1895 or thereabouts would they please inform Mr. Adrian Johnson on 0171 628 3681 or Mr. Maurice Dennett, on 87 4093, at the Museum.

MUSEUM EVENTS & EXHIBITIONS.

- Coffee Mornings - the second Wednesday of each month.
Textile Working Days - Sunday 12th October, 1997, 12.00 noon until 4.30 p.m.
Delginis In Concert - Saturday 13th September, 1997
Mikron Theatre Company - Saturday 18th October, 1997, 8.00 p.m.
If you go down to the woods - Tales from the Newbury by-pass.
Holiday Activities - Thursday 30th October, 1997, Build a Village.
Folk Evenings. - 3rd October - KEN NICOL and JIM & BONZ
7th November, CHINAMAN'S DOOR & MARIA BARHAN.
5th December, STRAWHEAD and BUZZ
Art Exhibitions. - 18 Oct. - 9 November, Saddleworth Open Exhibition.
15 Nov. - 4 January, Lees Art Group. (GREENFIELD)
Changing Exhibitions 13 Sept. - January, 98. VILLAGES OF SADDLEWORTH.)
Lincoln Trip - to the Christmas Market Friday, 5th December.
Victorian Christmas Saturday 6th December,
Weekend. - Sunday 7th December.

SADDLEWORTH W.E.A. COURSES AUTUMN 1997

Mondays: Landforms and Scenery in Northern England. 7.15- 9.15 p.m.
Tutor: David Uttley. 11 Meetings, Starting 22nd September, 1997

Tuesdays: Antiques. 7.15-9-15 p.m. Tutor: Denis Page.
11 Meetings starting 23rd September, 1997.

Thursdays: Railways of Great Britain. 7.15 - 9-15 p.m. Tutor: Ian Moss.
11 Meetings starting 2nd October, 1997

The above courses will be at Saddleworth School, Uppermill.

Wednesdays Embroidery as Sculpture. 1.00 - 3-00 p.m. Tutor: Gina Ullman.
11 Meetings starting 24th September, 1997, at
Lee Street Centre, Uppermill.

W.E.A. Annual General Meeting & Lecture.
Friday 19th September, 1997.

Through the Glass Darkly - an investigation into Stained Glass
and its meaning in England.

Speaker: Alan Petford.

7.30 p.m. Parish Centre, Lee Street, Uppermill.

Entry to lecture, including wine, cheese and raffle £1.50

For further details regarding either courses or lecture telephone 0161 633 3205
Enrol on the evening. Leaflets available in local libraries.

"OLD SADDLEWORTH - A PHOTOGRAPHIC JOURNEY"

A slide show by Michael Fox of photographs from the Peter Fox Collection,
of the 1870's to the 1960's.

The Parish Centre, (Old School), Lee Street, Uppermill.

Friday 10th October, 1997 at 7.30 p.m.

£1.50 on the door, raffle and refreshments.

All proceeds to Oldham Victim Support.

MEMBERSHIP SECTION.

A welcome is extended to the following new members :-

Mrs. Freda Millett, Grasscroft. Mrs. J. Cowburn, Uppermill.
Mr. Bob Lees, Oldham. Mrs. V. Rebneris, Victoria, Canada.

Mr. Ian Douthwaite, our Society member from New Zealand who is researching the Kenworthy family wishes to ascertain if anyone has electronic mail access and would be interested to correspond within the Society in this manner because he uses the Internet quite a lot, but has found very few references to Saddleworth and thinks some kind of catalogue of the Society's historical archives may be available in this manner at some future date. For the aware his full address is : 5/107 Holly Road, Christchurch 1. New Zealand. Phone 03 355 8114. E-mail ian@sharp.co.nz

We have recently enjoyed a most pleasant visit by Allen & Lera Shuttleworth of Maryland, U.S.A., who stayed at Higher Quick Farm, Lydgate. They were able to visit Tunstead, home of a Broadbent ancestor and then taken on a grand tour of Saddleworth via St. Chad's Church and Bill-o-Jack's, and lunched at the Cross Keys Inn, at Uppermill.

An equally pleasant occasion occurred when our member Mrs. Mollie Jenkins from Barnard Castle visited Saddleworth with her husband David, the retired Bishop of Durham, in search of the Kenworthy connections. This was fully explored by Michael Buckley who had mapped out the Kenworthy estates at Quick and Lower Quick, where they had once owned the whole of Roughtown, when Mossley was indeed in Saddleworth. Kenworthy deeds were supplied to aid this visit by Mr. & Mrs. R.W. Hindley, our members from Quick Road, Lydgate. The two Manor Houses were viewed at Quick and Lower Quick, together with a visit to a Kenworthy's later mill at Husteads and a scenic tour concluded the day with splendid views from Hill Top Lane looking down towards Denshaw & the Green Ash Hotel where Mr. & Mrs. Jenkins had stayed.

Obituary.

We are sorry to record the death of Mr. Keith Broadbent of Royton, and one of our most established members Miss O. Lees of St. Mary's Drive, Greenfield. Also the tragic death of Mrs. Mary Elford, who lived in Grotton, and whose funeral service was held at St. Anne's Church, Lydgate, attended by many friends and your Committee.

AUTUMN COACH TRIP

Saturday 27th SEPTEMBER, 1997.

To York, this ancient centre is still the chief city of Northern England and preserves many fascinating reminders of its historic past. York's chief glory is its magnificent Minster which towers over the little streets and houses of the old town. It is the largest Gothic cathedral north of the Alps, and its fine windows contain more than half of all the medieval glass surviving in England. In York you can become part of the past: viewing Roman remains at the Yorkshire Museum, sampling the Viking way of life at the Jorvik Viking Centre. But historic buildings, museums and other reminders of the past are only part of the attraction. The city centre provides interesting shops and a thriving open air market.

Price £5.00 Coach from Uppermill 9.00 a.m., returning 6.30 p.m. York.
A day free in York to spend as you wish.

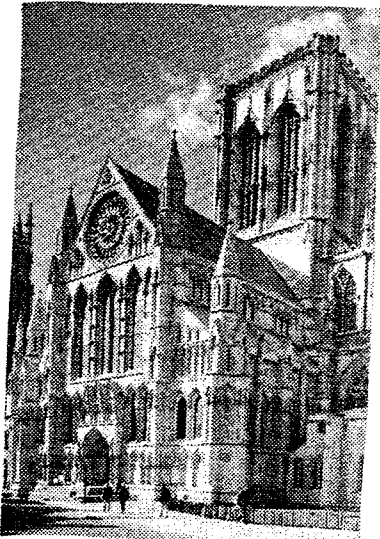
J. Hindle. August, 1997.

York

Jorvik

Viking Centre

A city of infinite variety



S.H.S. AUTUMN COACH TRIP to YORK

SATURDAY 27 SEPTEMBER 1997

9.00 a.m. Museum Uppermill.

A day free in York to spend as you wish. Explore York's Snickelways and meander through York's famous medieval streets where crooked timber frames blend with Georgian neighbours and attic windows view a city that has remained unchanged for centuries.

Relax and enjoy an afternoon tea or an attractive riverside walk by the Ouse or retire to the parks to share your sandwiches with squirrels and peacocks. York Minster is not only marvellous architecture but a working church and because of its stained glass, the Minster is wonderfully light and airy and from the top of its tower you have fine views over the city and the whole of the Vale of York. The National Railway Museum is the largest of its kind in the world.

Price for coach..... £5.00

S.H.S. AUTUMN COACH TRIP - SATURDAY 27th SEPTEMBER, 97

TO Mrs. W. Murray,
134 Oldham Road,
Denshaw,
Oldham. OL3 5RP

No. of seats

Names of all persons

Pick up point

Address

Total encls.

Tel. No.

Pick up points, Lees, 8.40, Springhead, 8.40,
Lydgate 8.45 a.m. Uppermill, 9.0 a.m.
Delph, 9.15 a.m.

All applications to be forwarded as soon as possible.

