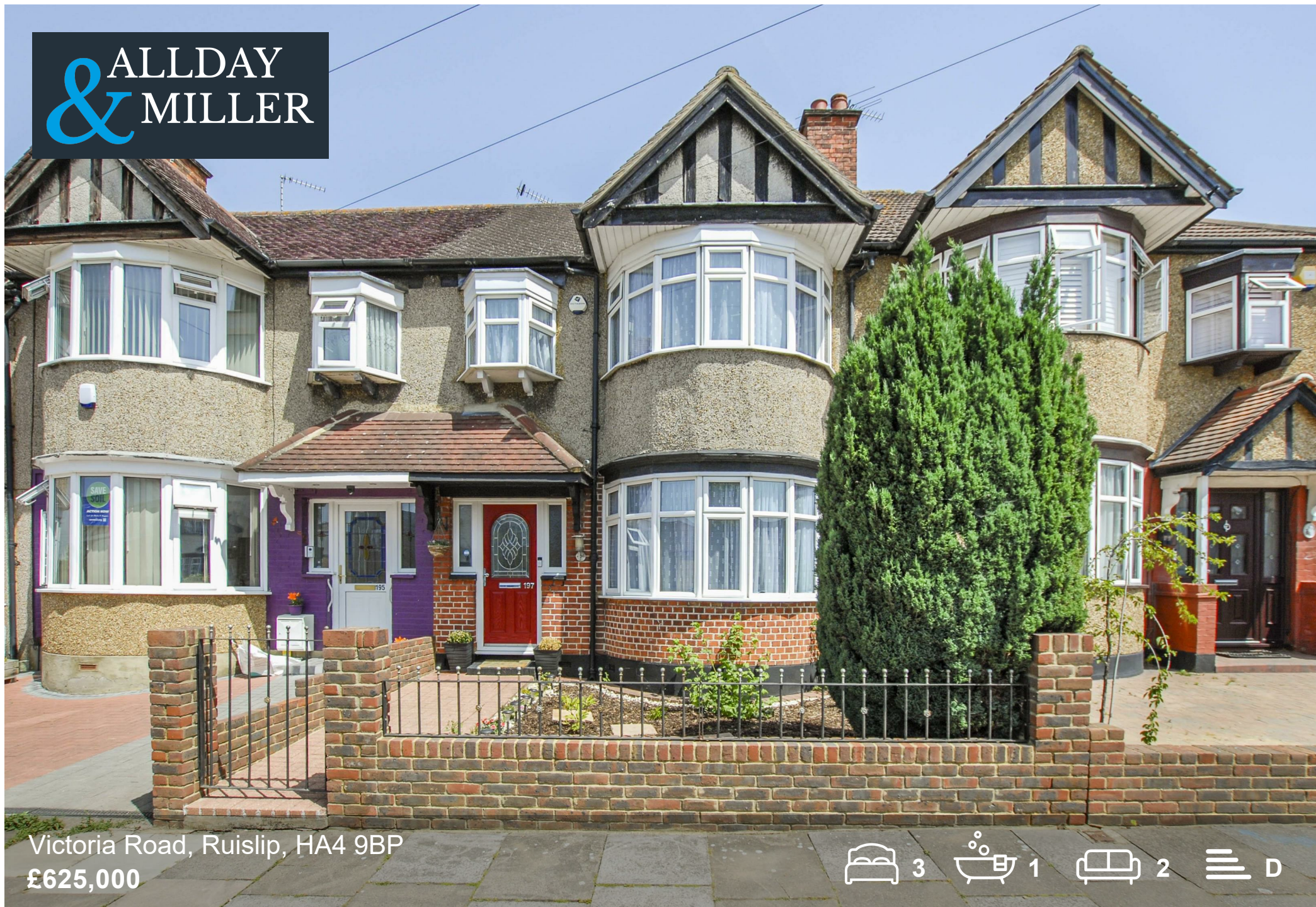


ALLDAY
& MILLER



Victoria Road, Ruislip, HA4 9BP
£625,000

3 1 2 D



Victoria Road, Ruislip, HA4 9BP

£625,000

- Three Bedroom Terraced Home
- Open Plan Kitchen Diner
- Private Rear Garden
- 1025 Sq Ft (95.2 Sq M)
- A Type Manor Home
- Walking Distance to Ruislip Manor Station
- Modern Bathroom
- Potential for Extension
- Close to Highly Regarded Schools
- Stylish Interiors Throughout

Description

This fine home is fantastically located and perfect for the growing family. The accommodation briefly comprises of welcoming entrance hall, light filled lounge with feature fireplace, open plan modern kitchen diner with double doors overlooking and providing access to rear garden. The first floor holds three well proportioned bedrooms and a recently fitted family bathroom.

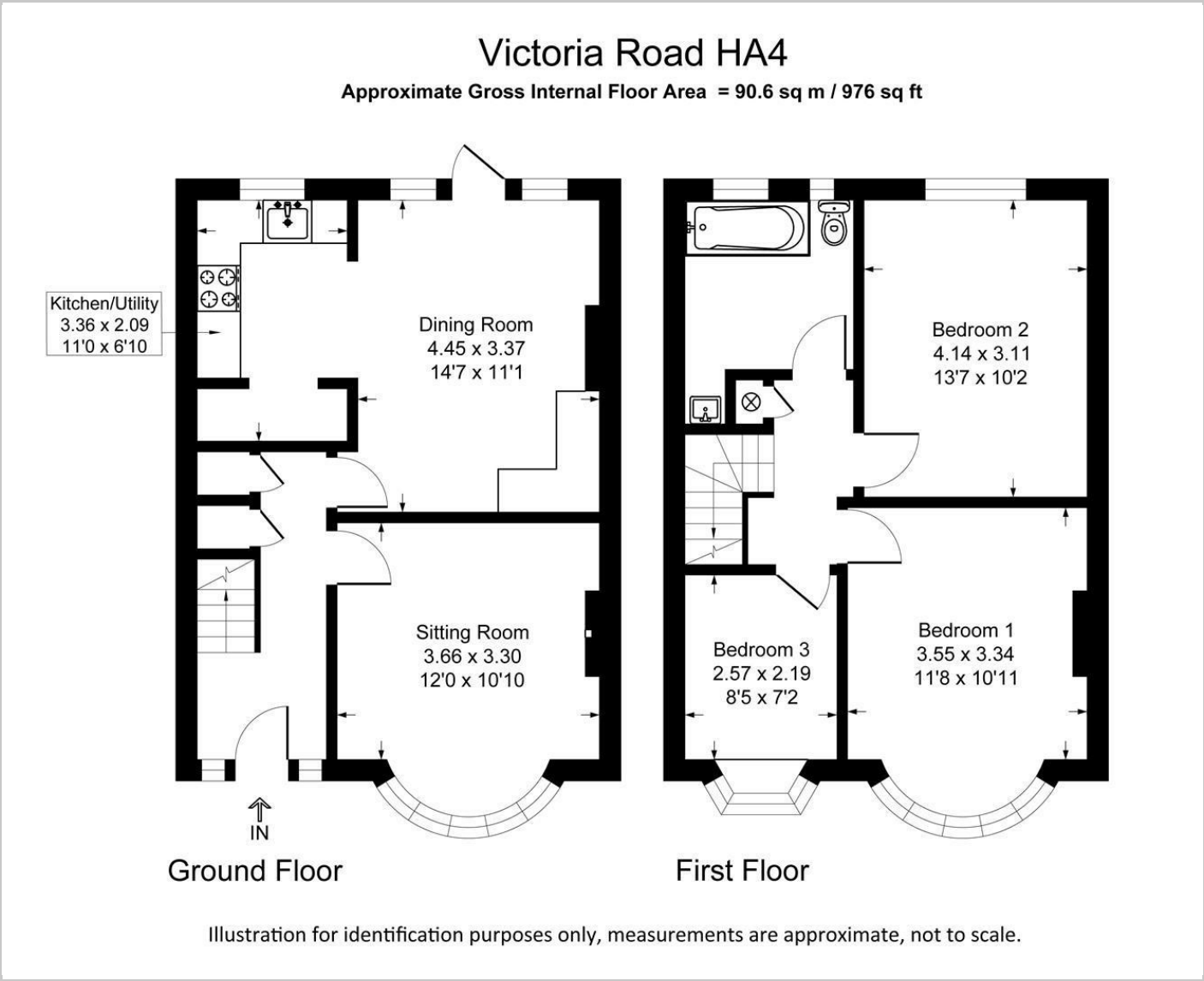
To the front of the property there is a well presented front garden and to the rear a private secluded garden with patio area perfect for outside dining

Situation

Extremely well placed and within easy reach Ruislip Manor's shopping and transport facilities including the Metropolitan and Piccadilly Line Station which offers services into London in less than an hour. Central line train stations and National Rail connections are also accessible locally. Alternatively for the motorist the A40/Western Avenue is just a short drive away providing easy and direct access into Central London and the surrounding Home Counties. For families the property is ideally located within the catchment areas of local highly regarded schools and is close to Bessingby Playing Fields.

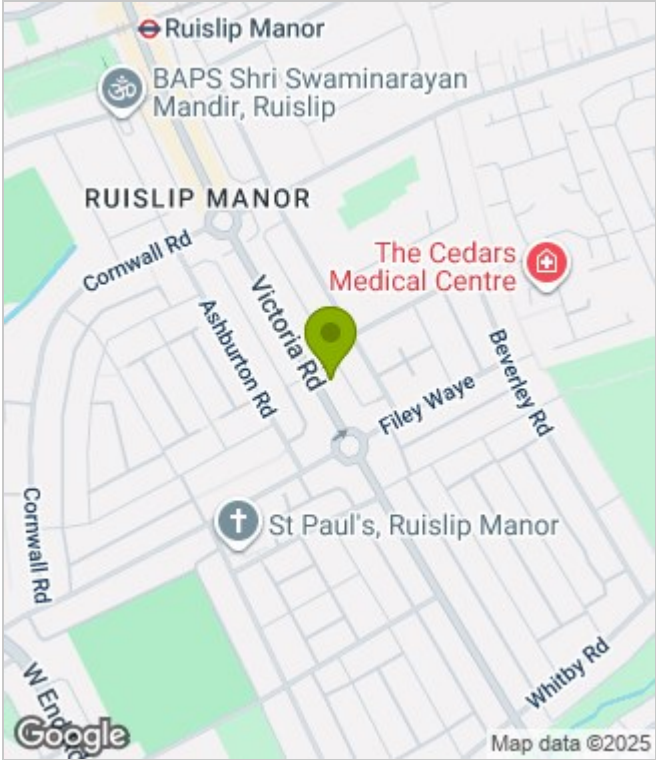


Floor Plans



These particulars, whilst believed to be accurate are set out as a general outline only for guidance and do not constitute any part of an offer or contract. Intending purchasers should not rely on them as statements of representation of fact, but must satisfy themselves by inspection or otherwise as to their accuracy. No person in this firms employment has the authority to make or give any representation or warranty in respect of the property.

Area Map



Energy Performance Graph

