



Hathaway Close, Ruislip, HA4 6PY  
£330,000







Hathaway Close, Ruislip, HA4 6PY

**£330,000**

- One Bedroom Starter Home
- Allocated Parking
- Large Bedroom
- Good Investment Opportunity
- Situated In A Peaceful Setting
- Freehold
- Loft Space For Storage
- Moments From Central Line
- End Of Terrace
- Chain Free

## Description

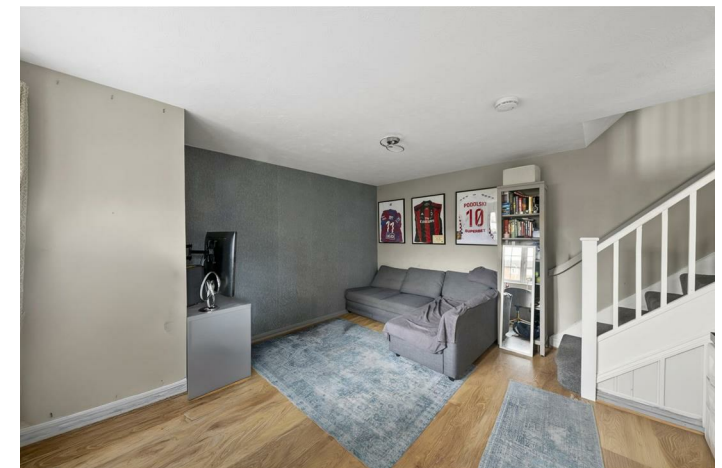
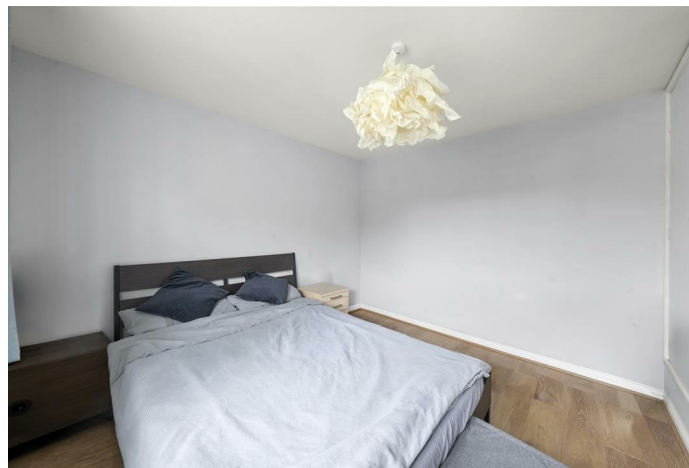
This well-presented property offers a delightful living experience.

The property features a welcoming reception room that seamlessly integrates with a modern fitted kitchen, creating an inviting space perfect for both relaxation and entertaining.

On the first floor, you will find a comfortable bedroom, providing a peaceful retreat, along with a well appointed bathroom which completes this home.

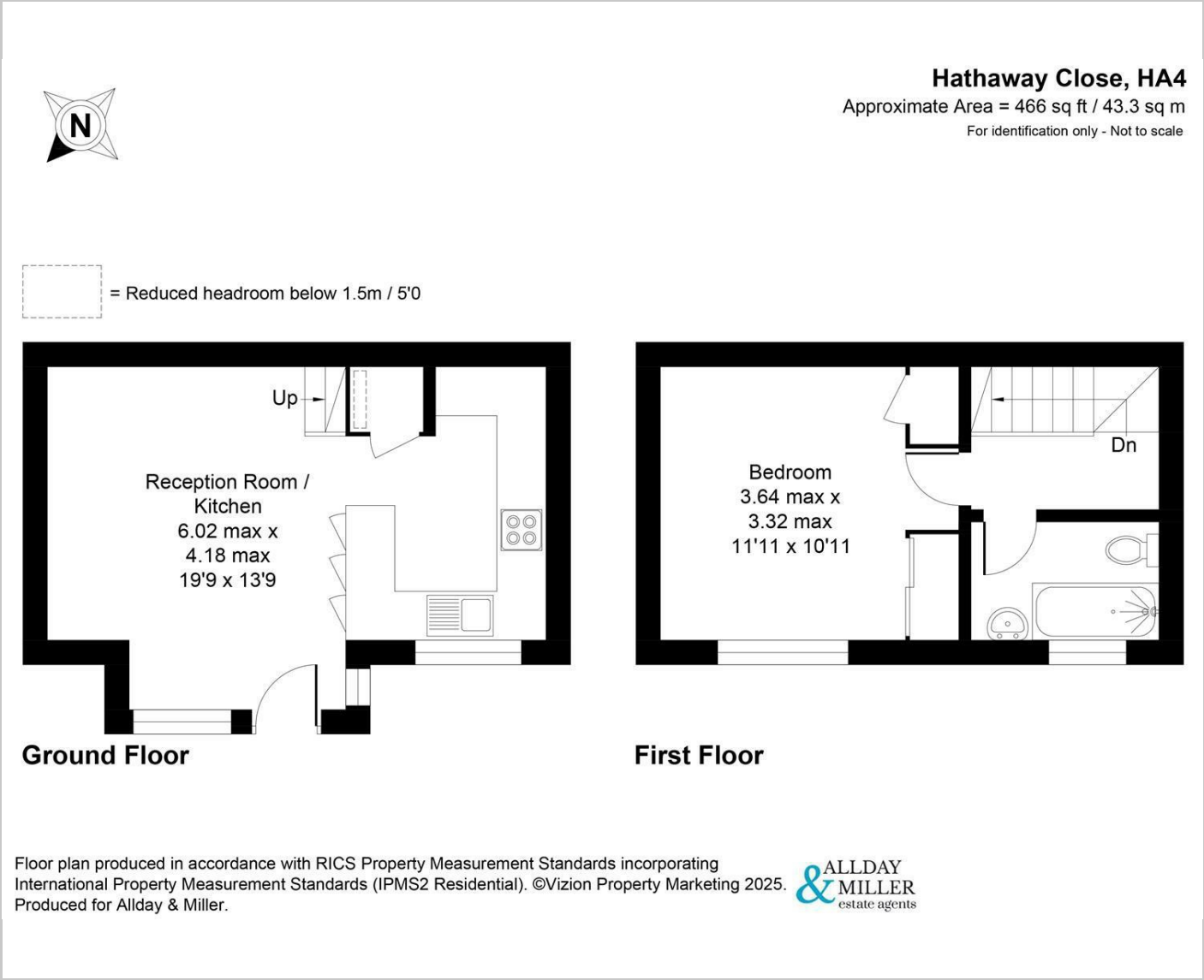
## Situation

Hathaway Close is well positioned for amenities of South Ruislip, Ruislip Gardens and Eastcote. Local transport links are available from nearby Ruislip Gardens train station offering the Central lines into London. Ruislip Manor station is a short drive or stroll away and is useful for the Metropolitan/Piccadilly line providing reliable links into the City. For the motorist the A40/M25 is a short drive away whilst for families, there are a number of highly regarded schools that cater for children of all ages within close proximity including St Swithun Wells, Ruislip High, Newnham Primary and Queensmead Secondary school.

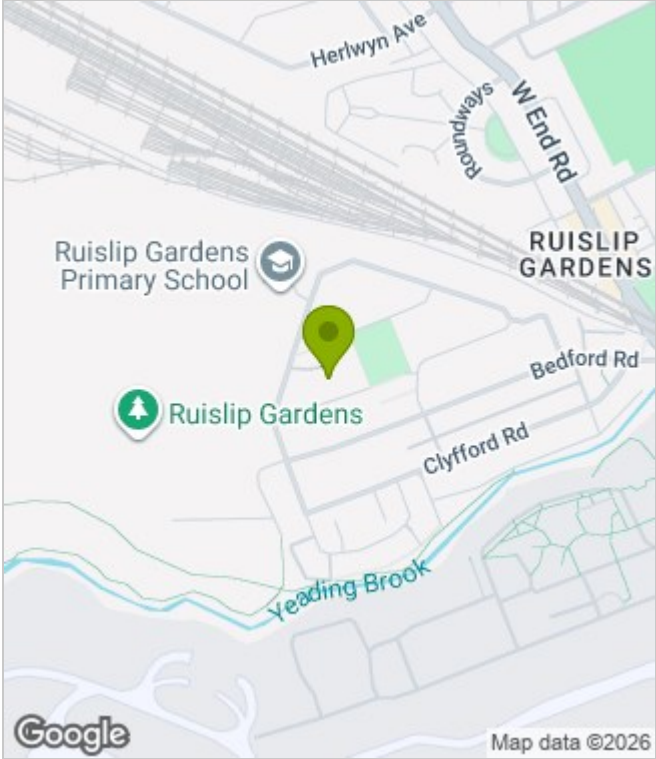




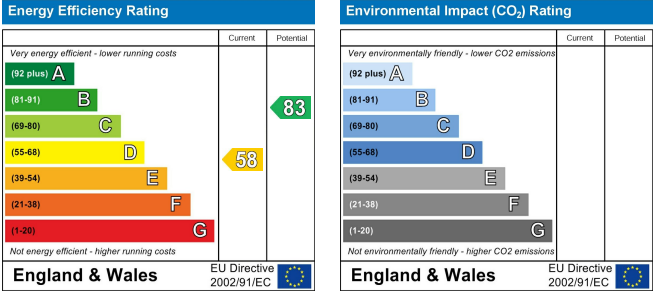
Floor Plans



Area Map



Energy Performance Graph



These particulars, whilst believed to be accurate are set out as a general outline only for guidance and do not constitute any part of an offer or contract. Intending purchasers should not rely on them as statements of representation of fact, but must satisfy themselves by inspection or otherwise as to their accuracy. No person in this firms employment has the authority to make or give any representation or warranty in respect of the property.