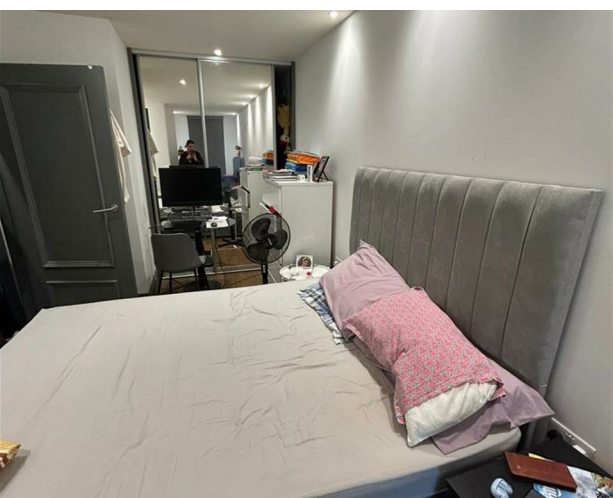
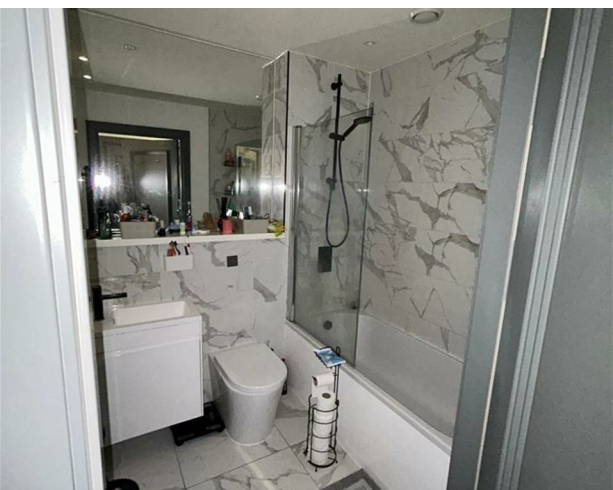


APT, 21 Greatminster House Lister Hill, Horsforth,
LEEDS, LS185AZ
£1,250 Per month

V&L
PROPERTIES



APT, 21 Greatminster House Lister Hill, Horsforth, LEEDS, LS185AZ

£1,250 Per month

Council Tax Band:







22 Regent Street
Leeds
LS2 7QA
01133 225737
info@vgl-properties.co.uk
vgl-properties.co.uk

Energy Efficiency Rating		
	Current	Potential
Very energy efficient - lower running costs		
(92 plus) A		
(81-91) B		
(69-80) C		
(55-68) D		
(39-54) E		
(21-38) F		
(1-20) G		
Not energy efficient - higher running costs		
England & Wales		EU Directive 2002/91/EC 