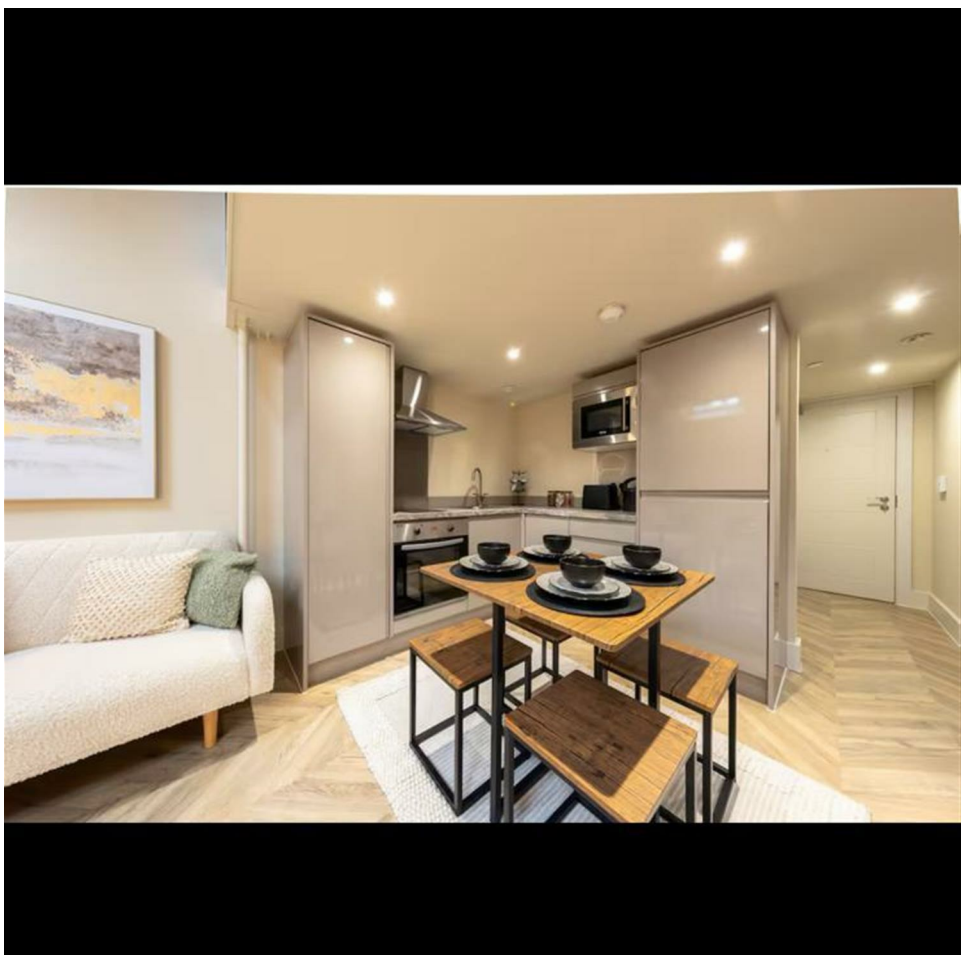
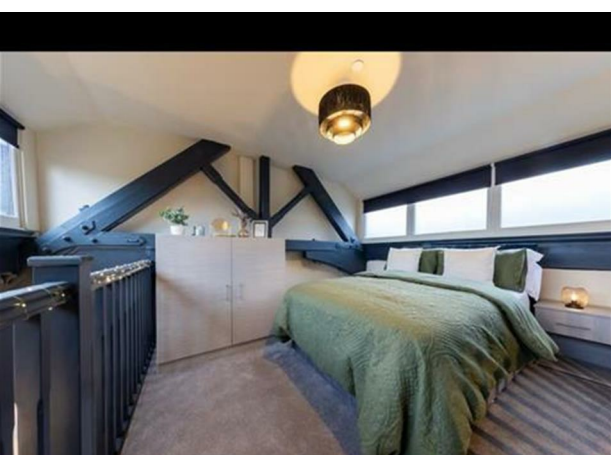
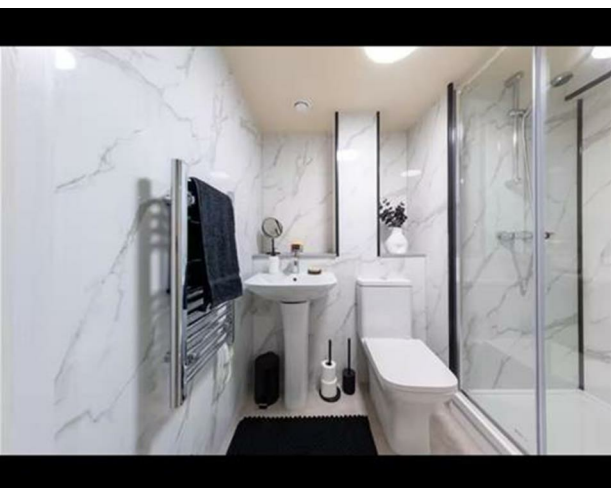
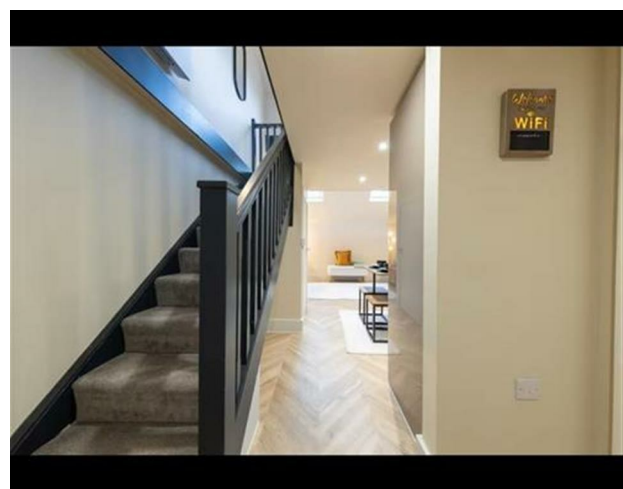
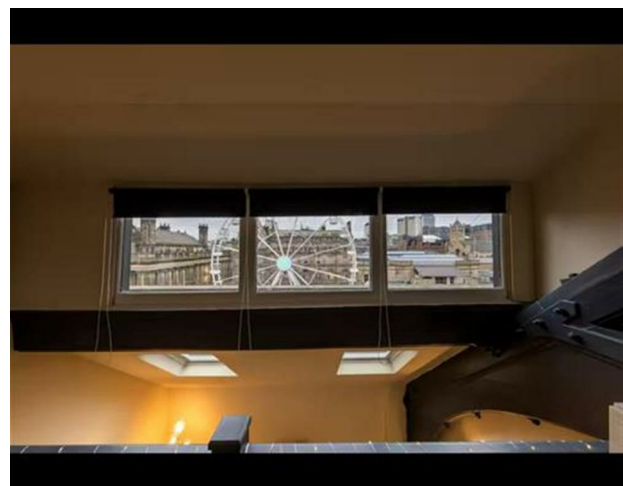


APT 36 - Athenaeum Residence, 147 - 157 The Headrow,
Leeds, LS1 5EW
£1,375 Per month

V&L
PROPERTIES



APT 36 - Athenaeum Residence, 147 - 157 The Headrow, Leeds, LS1 5EW

£1,375 Per month

Council Tax Band:

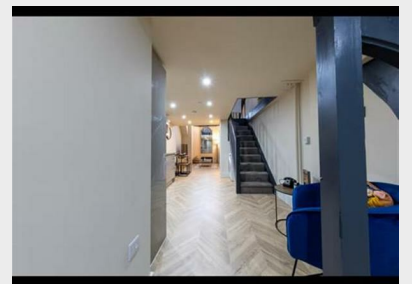
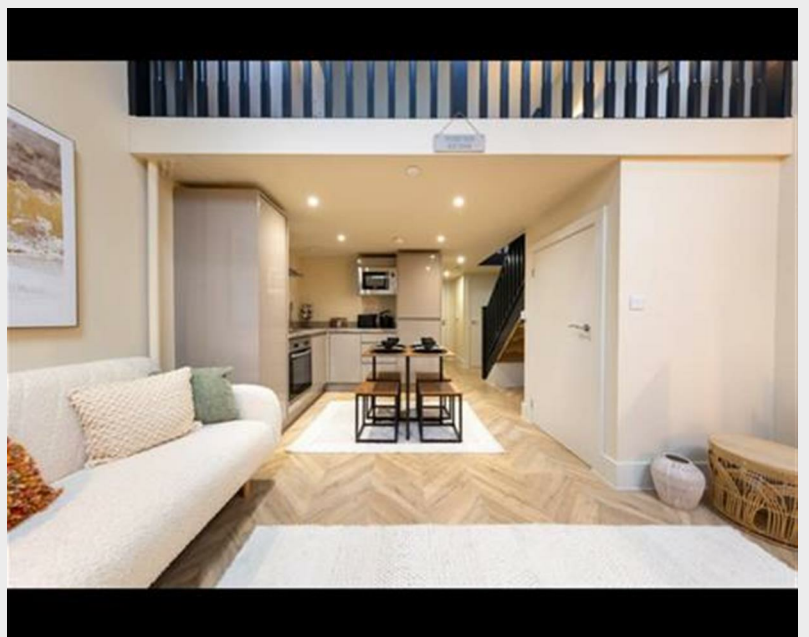
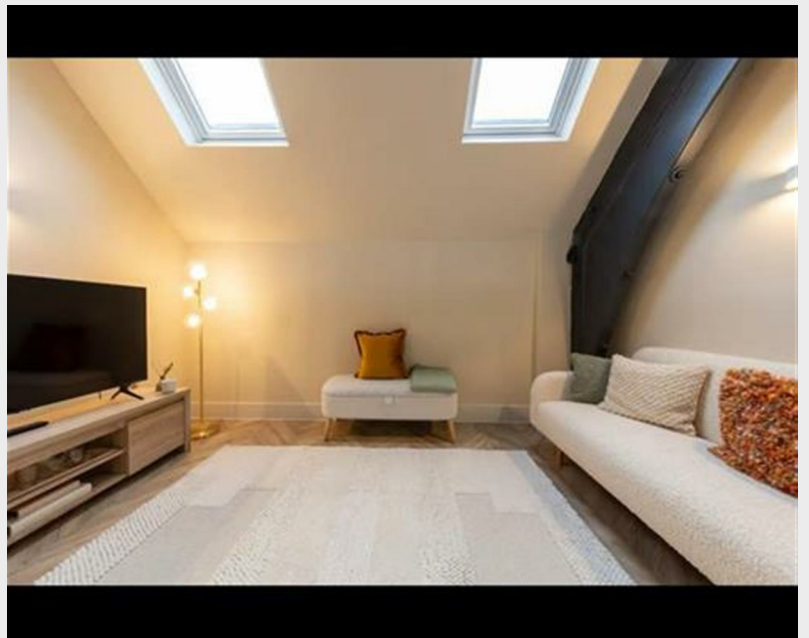
Nestled in the heart of Leeds, this charming fourth-floor apartment at 147A The Headrow offers a delightful urban living experience. Spanning 476 square feet, the property features a well-appointed reception room that provides a welcoming space for relaxation and entertainment. The bedroom is designed for comfort, ensuring a peaceful retreat at the end of the day.

The apartment includes a modern bathroom, equipped with essential amenities to cater to your daily needs. Its prime location on The Headrow places you within easy reach of a variety of shops, restaurants, and cultural attractions, making it an ideal choice for those who appreciate the vibrancy of city life.

With its front-facing position, the apartment benefits from natural light, creating a bright and airy atmosphere throughout. This property is perfect for individuals or couples seeking a convenient and stylish home in a bustling area.

Available for rent only, this apartment presents an excellent opportunity to enjoy the best of Leeds living. Don't miss your chance to make this delightful space your own.







22 Regent Street
Leeds
LS2 7QA
01133 225737
info@vgl-properties.co.uk
vgl-properties.co.uk

Energy Efficiency Rating		
	Current	Potential
Very energy efficient - lower running costs		
(92 plus) A		
(81-91) B		
(69-80) C		
(55-68) D		
(39-54) E		
(21-38) F		
(1-20) G		
Not energy efficient - higher running costs		
England & Wales		EU Directive 2002/91/EC 