

LEASEHOLD



Flat (EPC Rating: C)

ALGAR CLOSE
ISLEWORTH, TW7 7AQ

£290,000

ALEXANDER STEER
Estate Agents



c

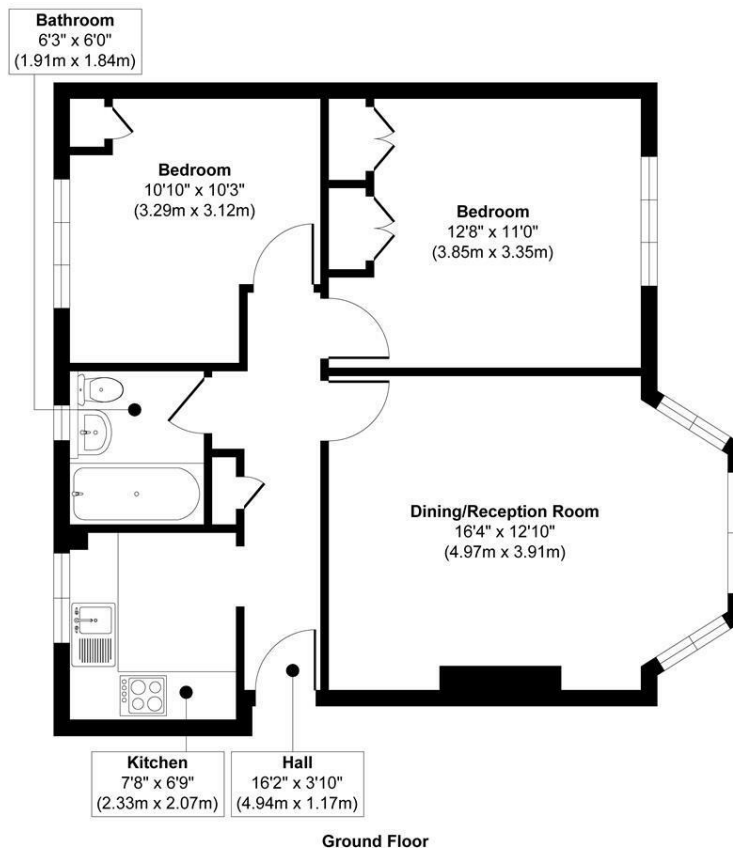
2 BEDROOM FLAT LOCATED IN ISLEWORTH

An exceptionally presented and spacious apartment within a quiet leafy cul de sac in old Isleworth. This excellent flat has been tastefully modernised by the current owner to suit modern styles with real parquet flooring throughout and neutrally toned decor.

The property comprises two generous double bedrooms with the master benefitting from built in storage, a large, bay-fronted, separate reception room facing south so allowing for plenty of natural light, a separate kitchen complete with white cabinetry and built-in appliances and a renovated three piece bathroom suite. This wonderful property offers excellent value for money in a popular part of Isleworth and would be perfect for first time buyers and investors alike. Offered to the market with a long lease.

Algar Close is a quiet, leafy cul de sac within the highly sought after Old Isleworth. It is well placed for a plethora of amenities on South Street and under a mile to the popular green space of Syon Park and the Thames Tow Path. There are convenient links into London from Isleworth Station which is under a mile.



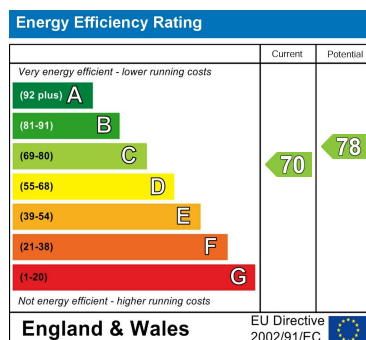


Approx. Gross Internal Floor Area 602 sq. ft / 55.95 sq. m
 Illustration for identification purposes only, measurements are approximate, not to scale.
 Produced by Elements Property

Council Tax Band

C

Energy Performance Graph



Call us on

0203 822 0111

hello@alexandersteer.co.uk

alexandersteer.co.uk

Agents Note: Whilst every care has been taken to prepare these particulars, they are for guidance purposes only. All measurements are approximate and are for general guidance purposes only and whilst every care has been taken to ensure their accuracy, they should not be relied upon and potential buyers are advised to recheck the measurements.

ALEXANDER STEER
 Estate Agents