



JENNIE JONES

EST. 1993

ESTATE AGENTS

CLOW COTTAGE

Hacheston | Suffolk

CLOW COTTAGE, THE STREET, HACHESTON. IP13 0DT

Framlingham – approx 4 miles
Wickham Market – approx 4 miles
Woodbridge – approx 7 miles

- Entrance Hall ● Cloakroom ● Sitting Room ● Study ●
- Open Plan Kitchen / Dining Family Room ● Pantry ● Utility Room ●
- Four Bedrooms ● Two Ensuites ● Family Bathroom ●
- Garden Studio ● Ample Off Road Parking ●

The Property

Built in 2013, this detached four bedroom family home occupies a generous plot and abounds with contemporary style and classic charm. The green oak family room, with vaulted ceilings and bifold doors, flows seamlessly from the kitchen/dining area into an expansive paved terrace—ideal for alfresco living. Underfloor heating graces the ground floor, while first-floor rooms enjoy radiator warmth. A detached oak-framed home office/den with power and light sits neatly in the garden. To front there is ample off road parking

Location

Nestled halfway between Framlingham and Wickham Market, Hacheston combines rural tranquillity with convenient access to local amenities. Both towns offer shopping, primary schools, and Framlingham includes senior schooling options, plus the historic college.

The vibrant village community includes a busy village hall, a top-notch farm shop and nursery, and is a short cycle from The White Horse Pub, Easton Farm Park, and local sports clubs. The Suffolk Heritage Coast—Orford, Thorpeness, Aldeburgh, Walberswick and Southwold—lies just 10 miles away, while Ipswich's rail services to London Liverpool Street are approximately 15 miles distant

Stylish village living with green-oak charm, modern comfort and space to breathe!



Services

Mains water, electricity, gas

Private drainage (modern sewage treatment plant)

Underfloor heating (ground floor), radiators (first floor)

Double glazing throughout

Local Authority and Council Tax Band

East Suffolk Council

Council Tax Band: F

EPC Rating

C



Clow Cottage, Hacheston

Approximate Gross Internal Area = 182.1 sq m / 1960 sq ft

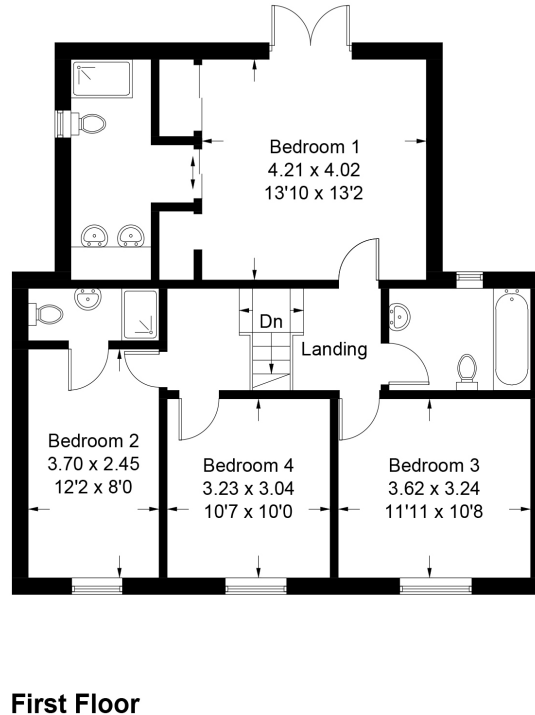
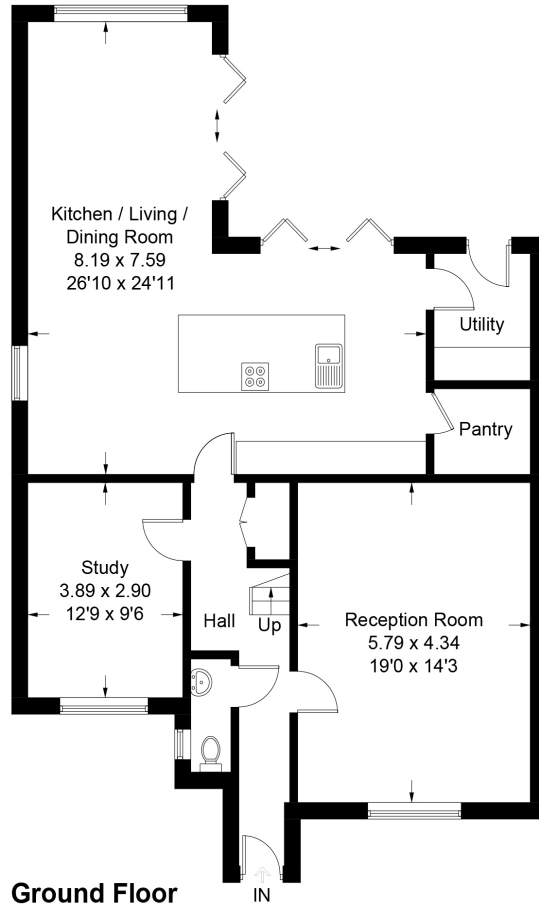


Illustration for identification purposes only, measurements are approximate, not to scale. floorplansUsketch.com © (ID1057017)



Jennie Jones

26 High Street
Saxmundham
Suffolk
IP17 1AB

www.jennie-jones.com
01728 605511

All enquiries:

saxmundham@jennie-jones.com



Scan the QR code to
watch our video tour

rightmove

OnTheMarket



JENNIE JONES

EST. 1993

ESTATE AGENTS