



Aston Road, Willerby, HU10

Guide Price £160,000 - £165,00





















# Aston Road, Willerby, HU10

This mid-terraced property is now available for sale in the desirable village of Willerby, offered with no onward chain! Step inside to a welcoming entrance hall, leading to a comfortable lounge and a spacious kitchen/diner on the ground floor. Upstairs, you'll find two well-proportioned bedrooms and a family bathroom. Outside, the property benefits from a large rear garden and a convenient driveway to the front, providing off-street parking.

Situated in the desirable village of Willerby, best known for its peaceful surroundings and community feel. The neighbourhood features beautiful green spaces, local shops and great transport links to the Hull City Centre and surrounding villages. There are also well regarded schools near by such as Springhead Primary and Wolfreton High School. Additionally offering Anlaby retail park where there is the local Morrisons Superstore, M&S, Pets at Home, Asda Home, Next and many more!

Score	Energy rating	Current	Potential
92+	A		92 A
81-91	B		
69-80	C	71 C	
55-68	D		
39-54	E		
21-38	F		
1-20	G		

## KEY FEATURES

- MID-TERRACED
- 2 BEDROOMS
- NO CHAIN
- DRIVEWAY
- DESIRABLE LOCATION
- CLOSE TO AMENITIES



# DETAILS

## Entrance Hall

With laminate flooring, radiator, stairs leading to the first floor and door leading to the lounge.

## Lounge

With laminate flooring, radiator, double glazed window and door leading to the kitchen.

## Kitchen

With laminate flooring, oven, hob, extractor fan, laminate work surfaces, sink/drain, double glazed windows, space for appliances and door leading to the garden.

## Bedroom 1

With carpet flooring, radiator and double glazed window.

## Bedroom 2

With carpet flooring, radiator and double glazed window.

## Bathroom

With tiled flooring, shower cubicle, WC, wash hand pedestal basin, radiator and double glazed window.

## Outside

Outside, the property benefits from a large rear garden and a convenient driveway to the front, providing off-street parking.

## Viewings

Strictly by appointment with selling agents. Please contact Wigwam Homes today to book your viewing.

## Fixtures & Fittings

Various fixtures and fittings may be available by separate negotiation and need to be confirmed prior to processing a formal offer.

## Free Market Appraisals / Property Valuations

We at Wigwam Homes are delighted to offer any homeowner a FREE no

obligation valuation on your property. Call today to book! Interested in selling? We offer zero tie-in periods and no-sale NO-fee! Call us now on 01482 50 51 52 to book a valuation.

## Free Mortgage Consultations

At Wigwam Homes we have our own independent mortgage advisors with access to over 90 lenders. With so many mortgage products on the market, an independent advisor can show you all the various options and help you discover which one is right for you. We can also help with any property, income and personal insurances which you may need to complete your mortgage application.

## About Us

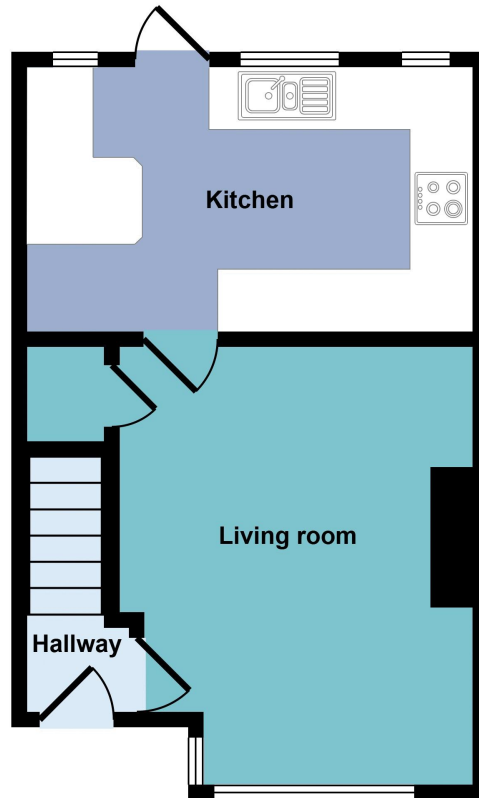
At Wigwam Homes we take pride in the success we achieve for our clients. Whether it is selling your properties, finding your forever home, searching for a long-term rental investment or looking to profit from onward selling, the Wigwam team is here to guide you through the housing market.

## Disclaimer

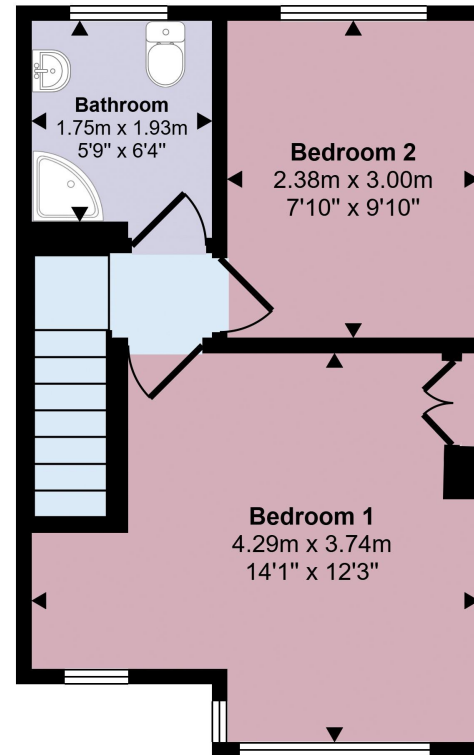
Here at Wigwam Homes we try to ensure that all information in the advertisements are correct. However, we do advise any potential buyers to conduct their own viewing. The Agent has not checked the legal documentation to verify legal status of the property or the validity of any guarantee. A buyer must assume the information is incorrect, until it has been verified by their own solicitors. The measurements supplied are for general guidance, and as such must be considered as incorrect. A buyer is advised to re-check the measurements themselves before committing. Nothing concerning the type of construction or the condition of the structure is to be implied from the photograph of the property. These details are prepared as a general guide only, and should not be relied upon as a basis to enter into a legal contract, or to commit expenditure. An interested party should consult their own surveyor, solicitor or other professionals before committing themselves to any expenditure.



Approx Gross Internal Area  
28 sq m / 304 sq ft



Ground Floor



First Floor

Approx 28 sq m / 304 sq ft

This floorplan is only for illustrative purposes and is not to scale. Measurements of rooms, doors, windows, and any items are approximate and no responsibility is taken for any error, omission or mis-statement. Icons of items such as bathroom suites are representations only and may not look like the real items. Made with Made Snappy 360.