



Newington Avenue, Hull, HU4

Guide Price £145,000 - £150,000













Newington Avenue, Hull, HU4

This mid-terraced property is on the market with the added benefit of no onward chain! While some refurbishment is required, this home offers significant potential. The ground floor briefly comprises an entrance hall, lounge, dining room, kitchen, and a downstairs WC. To the first floor there are three bedrooms and a bathroom. Outside, the property features a rear garden, garage and a driveway.

Located on Newington Avenue, the property benefits from close proximity to the excellent local shops, cafes, and general amenities. Anlaby Road and Hessle Road are only a few minutes away by car, providing access to even more activities and local shops. There are also excellent bus transport links around the city centre and surrounding villages.

KEY FEATURES

- MID-TERRACED
- 3 BEDROOMS
- NO CHAIN
- 2 RECEPTION ROOMS
- DRIVEWAY
- GARAGE

DETAILS

Entrance Hall

With laminate flooring, radiator, stairs leading to the first floor, doors leading to the lounge, dining room and kitchen.

Lounge

With laminate flooring, electric fire, double glazed window and radiator.

Dining Room

With laminate flooring, radiator and patio doors leading to the rear aspect.

Kitchen

With vinyl flooring, laminate work surfaces, hob, oven, extractor fan, sink, space for appliances, radiator, double glazed windows, storage cupboard, doors leading to the downstairs WC and rear garden.

Downstairs WC

With WC and double glazed window.

Bedroom 1

With carpet flooring, fitted wardrobes and double glazed windows.

Bedroom 2

With laminate flooring, radiator, double glazed window and storage cupboard.

Bedroom 3

With laminate flooring and double glazed window.

Bathroom

With vinyl flooring, bath tub, shower attachment, WC, wash hand pedestal basin, double glazed window and radiator.

Outside

Outside, the property features a rear garden, garage and a driveway.

Viewings

Strictly by appointment with selling agents. Please contact Wigwam Homes today to book your viewing.

Fixtures & Fittings

Various fixtures and fittings may be available by separate negotiation and need to be confirmed prior to processing a formal offer.

Free Market Appraisals / Property Valuations

We at Wigwam Homes are delighted to offer any homeowner a FREE no obligation valuation on your property. Call today to book! Interested in selling? We offer zero tie-in periods and no-sale NO-fee! Call us now on 01482 50 51 52 to book a valuation.

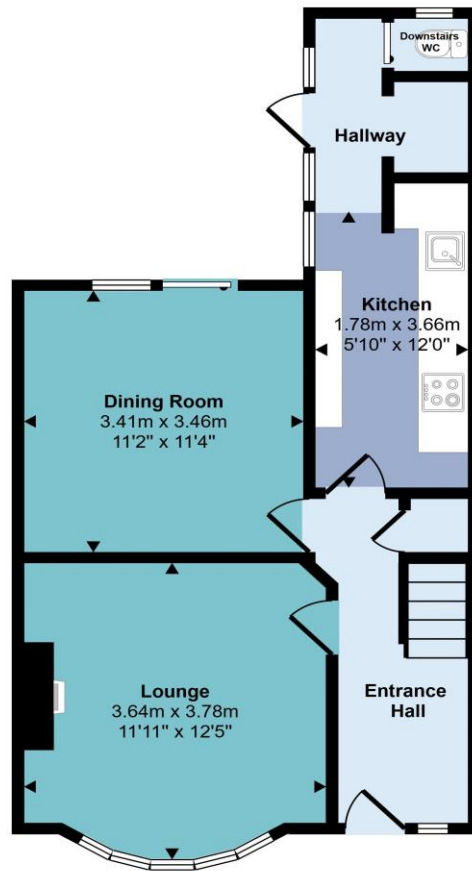
Free Mortgage Consultations

At Wigwam Homes we have our own independent mortgage advisors with access to over 90 lenders. With so many mortgage products on the market, an independent advisor can show you all the various options and help you discover which one is right for you. We can also help with any property, income and personal insurances which you may need to complete your mortgage application.

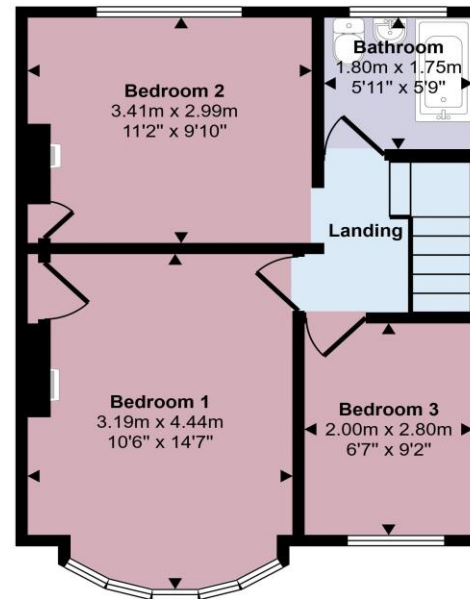
Disclaimer

Here at Wigwam Homes we try to ensure that all information in the advertisements are correct. However, we do advise any potential buyers to conduct their own viewing. The Agent has not checked the legal documentation to verify legal status of the property or the validity of any guarantee. A buyer must assume the information is incorrect, until it has been verified by their own solicitors. The measurements supplied are for general guidance, and as such must be considered as incorrect. A buyer is advised to re-check the measurements themselves before committing. Nothing concerning the type of construction or the condition of the structure is to be implied from the photograph of the property. These details are prepared as a general guide only, and should not be relied upon as a basis to enter into a legal contract, or to commit expenditure. An interested party should consult their own surveyor, solicitor or other professionals before committing themselves to any expenditure.

Approx Gross Internal Area
84 sq m / 899 sq ft



Ground Floor
Approx 45 sq m / 488 sq ft



First Floor
Approx 38 sq m / 411 sq ft

This floorplan is only for illustrative purposes and is not to scale. Measurements of rooms, doors, windows, and any items are approximate and no responsibility is taken for any error, omission or mis-statement. Icons of items such as bathroom suites are representations only and may not look like the real items. Made with Made Snappy 360.