

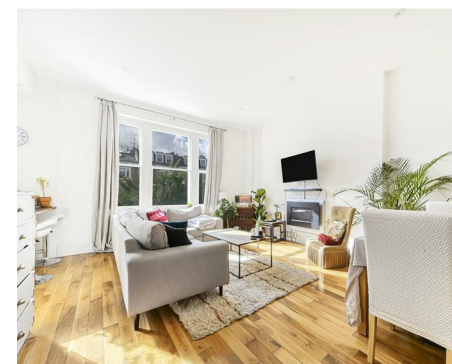


2 Bedrooms

Apartment

Located in London

£650,000



[Hello@savipropertyconsulting.com](mailto:Hello@savipropertyconsulting.com)

[www.savipropertyconsulting.com](http://www.savipropertyconsulting.com)

Elsham Road, London, W14  
Approximate Gross Internal Floor Area = 60.3 sq m / 649 sq ft

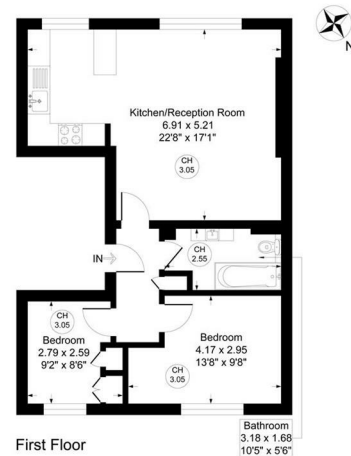


Illustration for identification purposes only, measurements are approximate, not to scale.

This beautifully presented 1st floor, two-bedroom mid-terraced residence, in a Victorian conversion situated in a quiet tree-line street close to Kensington and Holland Park. The property offers a bright spacious reception room with an semi open-plan kitchen. A good size bathroom with storage.

Elsham Road is an attractive tree-line street in the Royal Borough of Kensington & Chelsea allowing you a parking permit. This property is superbly located within a short distance from the amenities of Holland Park and Kensington High Street, with the green open space of Holland Park along with Westfield Shopping Centre and the amenities of Brook Green. There are excellent transport links locally including Underground and Overground services from Kensington Olympia and Shepherds Bush as well as easy access to the Airport via M4/M40 motorways.

The property is available immediately furnished or unfurnished, landlord is flexible.

### Energy Efficiency Rating: C

Agents Note: Whilst every care has been taken to prepare these particulars, they are for guidance purposes only. All measurements are approximate and are for general guidance purposes only and whilst every care has been taken to ensure their accuracy, they should not be relied upon and potential buyers/tenants are advised to recheck the measurements.



24 Notting Hill Gate

London

W11 3LB

[Hello@savipropertyconsulting.com](mailto:Hello@savipropertyconsulting.com)

[www.savipropertyconsulting.com](http://www.savipropertyconsulting.com)