

HoldenCopley

PREPARE TO BE MOVED

Seymour Road, West Bridgford, Nottingham NG2 5EG

£900 PCM

APARTMENT LIVING...

This well-presented two-bedroom ground floor apartment is offered to the market unfurnished or furnished and is ready for immediate occupancy. Boasting neutral décor throughout, the property features in-built storage and is ideal for couples or working professionals. Situated in the sought-after location of West Bridgford it benefits from close proximity to a variety of shops, eateries and excellent transport links into Nottingham city centre. The accommodation comprises an inviting entrance hall, a modern fitted kitchen with integrated and freestanding appliances, open plan to a bright living/dining area with a bay fronted window, two generously sized bedrooms and a contemporary three-piece bathroom suite. Externally, the apartment includes access to a car park with an allocated off-street parking space.

AVAILABLE NOW!

PLEASE NOTE FURNISHINGS ARE NEGOTIABLE AND THE PROPERTY IS AVAILABLE FURNISHED OR UNFURNISHED



- Ground Floor Apartment
- Two Bedrooms
- Modern Fitted Kitchen
- Open Plan Living/Diner
- Three Piece Bathroom Suite
- In-Built Storage Throughout
- Available Furnished or Un-Furnished
- Off-Street Parking Available
- Popular Location
- 360 Virtual Tour

ACCOMMODATION

Entrance

16'10" max x 10'1" (5.14m max x 3.08m)
The entrance hall has wood effect vinyl flooring, in-built storage cupboard, recessed ceiling spotlights, smoke alarm, radiator and a single door providing access into the accommodation

Open Plan Living/Kitchen Area

19'9" into bay x 16'1" max (6.02m into bay x 4.91m max)
The kitchen has tiled flooring, partially tiled walls, recessed ceiling spotlights, coving to the ceiling, a range of fitted wall and base units with fitted worksurfaces, stainless steel sink with a drainer and mixer taps, integrated oven with gas hobs, stainless steel splashback with an over hood extractor hood, integrated fridge, freestanding freezer and a freestanding washing machine
The living room has wood effect laminate flooring, coving to the ceiling and a UPVC double glazed bay window

Master Bedroom

14'4" into bay x 8'7" (4.37m into bay x 2.64m)
The main bedroom has carpeted flooring, fitted wardrobe, radiator and a UPVC double glazed window

Bedroom Two


12'2" x 7'11" (3.71m x 2.43m)
The second bedroom has carpeted flooring, radiator and a double glazed window


Bathroom

6'9" x 6'3" (2.06m x 1.93m)
The bathroom has tiled flooring, partially tiled walls, recessed ceiling spotlights, low level dual flush WC, pedestal washbasin with mixer taps, panelled bath with mixer taps and a wall mounted mains-fed shower with a shower screen, radiator and an extractor fan

OUTSIDE

Outside is access to a car park with an allocated parking space provided off-street parking

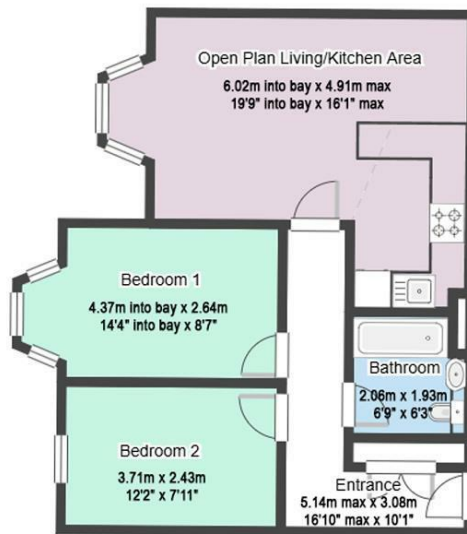
Energy Efficiency Rating		
	Current	Potential
Very energy efficient - lower running costs		
(92 plus) A		
(81-91) B		
(69-80) C		
(55-68) D		
(39-54) E		
(21-38) F		
(1-20) G		
Not energy efficient - higher running costs		
	77	78
England & Wales	EU Directive 2002/91/EC 	

Environmental Impact (CO ₂) Rating		
	Current	Potential
Very environmentally friendly - lower CO ₂ emissions		
(92 plus) A		
(81-91) B		
(69-80) C		
(55-68) D		
(39-54) E		
(21-38) F		
(1-20) G		
Not environmentally friendly - higher CO ₂ emissions		
England & Wales	EU Directive 2002/91/EC 	



Seymour Road, West Bridgford, Nottingham NG2 5EG

HoldenCopley
PREPARE TO BE MOVED



FLOORPLAN IS FOR ILLUSTRATIVE PURPOSES ONLY

All measurements walls, doors, windows, fittings and appliances, their sizes and locations are an approximate only. They cannot be regarded as being a representation by the seller nor their agent and is for identification only. Not to scale.
© HoldenCopley

01158228800

4 Croft Road, Arnold, Nottingham, NG5 7DX

lettings@holdencopley.co.uk

www.holdencopley.co.uk

Agents Disclaimer: HoldenCopley, their clients and employees I: Are not authorised to make or give any representations or warranties in relation to the property either here or elsewhere, either on their own behalf or on behalf of their client or otherwise. They assume no responsibility for any statement that may be made in these particulars. These particulars do not form part of any offer or contract and must not be relied upon as statements or representations of fact. 2: Any areas, measurements or distances are approximate. The text, photographs and plans are for guidance only and are not necessarily comprehensive. It should not be assumed that the property has all necessary planning, building regulation or other consents and HoldenCopley have not tested any services, equipment or facilities. Purchasers must make further investigations and inspections before entering into any agreement.