

HoldenCopley

PREPARE TO BE MOVED

Town End Road, Draycott, Derby DE72 3PW

£950 PCM

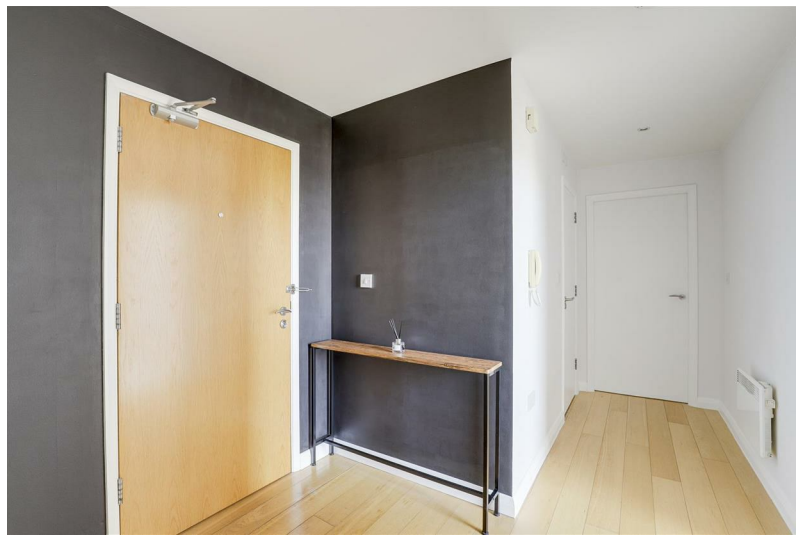
Town End Road, Draycott, Derby DE72 3PW



APARTMENT LIVING...

A well-presented two-bedroom apartment offering spacious, neutrally decorated accommodation with charming period features, including wooden beams and floor-to-ceiling windows. Located in the sought-after area of Draycott, the property provides excellent commuting access to both Derby and Nottingham city centres, making it ideal for couples or working professionals. The apartment is offered unfurnished and is available for immediate occupancy. Internally, it features an inviting entrance hall leading to an open-plan living, kitchen and dining area with integrated appliances. There are two double bedrooms, including a master with en-suite, and a separate modern three-piece bathroom suite. Externally, residents benefit from off-street parking in a private car park. Contact us today to arrange a viewing.

AVAILABLE NOW!





- Apartment
- Two Bedrooms
- Open Plan Kitchen/Living Area
- Three Piece Shower Suite & En-Suite To Master Bedroom
- In-Built Storage Available
- Un-Furnished
- Car Park Providing Off-Street Parking
- Popular Location
- 360 Virtual Tour
- Available Now





ACCOMMODATION

Entrance

15'0" max x 8'1" (4.58m max x 2.48m)

The entrance has wood effect laminate flooring, recessed ceiling spotlights, wall mounted intercom, wall mounted electric heater, smoke alarm, in-built storage cupboard and a single door providing access into the accommodation

Living/Kitchen Area

21'6" max x 19'0" (6.56m max x 5.80m)

The living area has wood effect laminate flooring, wall mounted electric heater, wall to ceiling feature windows, space for a dining table and chairs and is open plan to the kitchen area

The kitchen has wood effect laminate flooring, a range of fitted wall and base units with fitted worksurfaces, stainless steel sink and a half with a drainer and mixer taps, wall mounted electric heater, integrated dishwasher, integrated fridge/freezer, integrated oven with electric hobs and an extractor unit.

Master Bedroom

16'11" max x 14'8" (5.17m max x 4.49m)

The main bedroom has carpeted flooring, recessed ceiling spotlights, two wall mounted electric heaters, freestanding double wardrobes, in-built storage cupboard, provides access to the en-suite and two floor to ceiling feature windows

En-suite

8'8" x 6'4" (2.65m x 1.95m)

The en-suite has partially tiled walls, recessed ceiling spotlights, wall mounted heated towel rail, washbasin with mixer taps, shaving point, low level dual flush WC, panelled bath with mixer taps a wall mounted mains-fed waterfall shower with a shower over and shower screen

Bedroom Two

12'7" x 10'6" (3.85m x 3.21m)

The second bedroom has carpeted flooring, recessed ceiling spotlights and a double glazed floor to ceiling feature window

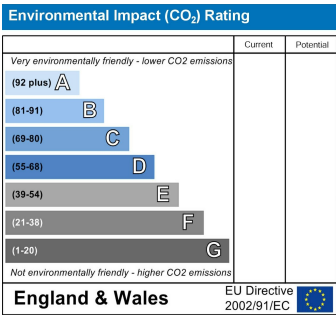
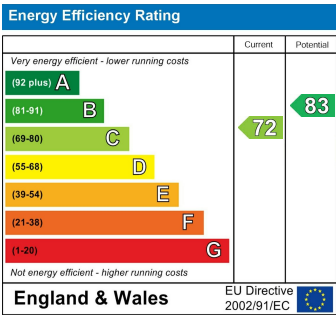
Shower Room

8'6" x 3'9" (2.60m x 1.16m)

The shower room has partially tiled walls, recessed ceiling spotlights, low level dual flush WC, wall mounted heated towel rail, washbasin with mixer taps and a single shower enclosure with a wall mounted mains-fed shower

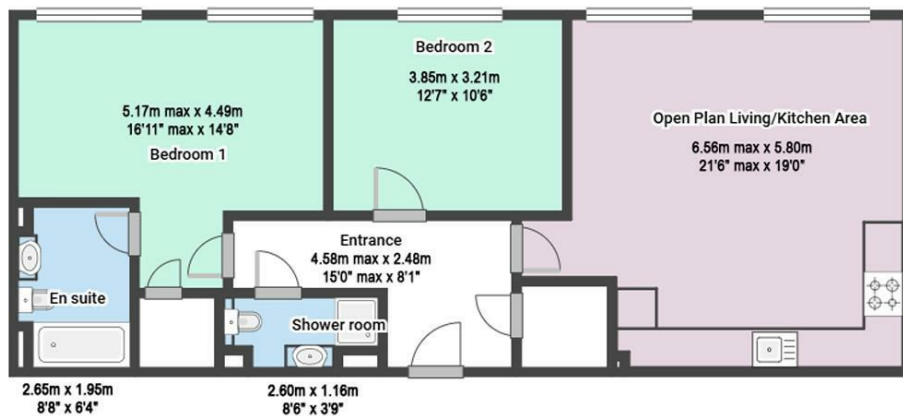
OUTSIDE

There is access to a car park providing off-street parking



Town End Road, Draycott, Derby DE72 3PW

HoldenCopley
PREPARE TO BE MOVED



FLOORPLAN IS FOR ILLUSTRATIVE PURPOSES ONLY

All measurements walls, doors, windows, fittings and appliances, their sizes and locations are an approximate only. They cannot be regarded as being a representation by the seller nor their agent and is for identification only. Not to scale.
© HoldenCopley

01158228800

4 Croft Road, Arnold, Nottingham, NG5 7DX

lettings@holdencopley.co.uk

www.holdencopley.co.uk

Agents Disclaimer: HoldenCopley, their clients and employees I: Are not authorised to make or give any representations or warranties in relation to the property either here or elsewhere, either on their own behalf or on behalf of their client or otherwise. They assume no responsibility for any statement that may be made in these particulars. These particulars do not form part of any offer or contract and must not be relied upon as statements or representations of fact. 2: Any areas, measurements or distances are approximate. The text, photographs and plans are for guidance only and are not necessarily comprehensive. It should not be assumed that the property has all necessary planning, building regulation or other consents and HoldenCopley have not tested any services, equipment or facilities. Purchasers must make further investigations and inspections before entering into any agreement.