



242 Plumstead High Street, London
£5,000 pcm



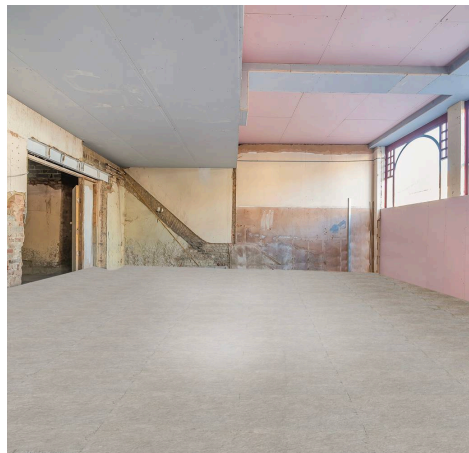
242 Plumstead High Street

London, London

Exceptional opportunity to lease a brand new commercial property located on Plumstead High Street. Versatile space with 2000 sq ft on the ground floor and 1600 sq ft in the basement. Council Tax band: TBD

Tenure: Leasehold

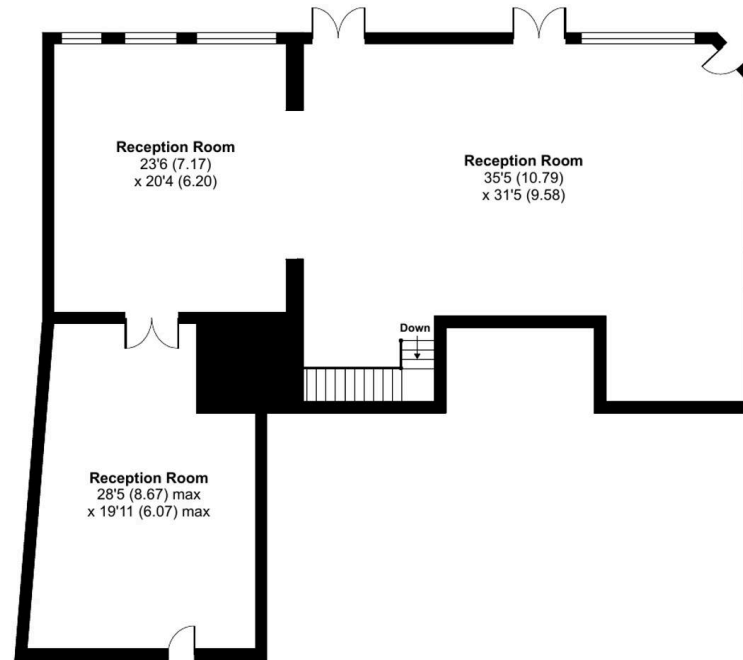
- Ground Floor & Basement Commercial
- STRICTLY NO TAKEAWAY OR RESTAURANTS
- User Class: F2 Local Community
- Ground Floor Approximately 2000 Sq Ft & Basement Approximately 1600 Sq Ft
- Brand New FRI Lease Available
- High Street Location
- NO VAT Applicable
- Spacious Interior: Offering A Versatile Use
- Prime Location: Situated In The Bustling Heart Of Plumstead High Street, Benefiting From High Footfall And Excellent Visibility.



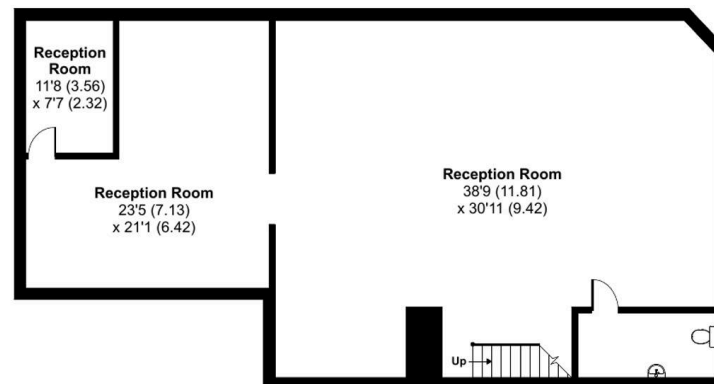
Plumstead High Street, London, SE18

Approximate Area = 3846 sq ft / 357.3 sq m

For identification only - Not to scale



GROUND FLOOR



LOWER GROUND FLOOR