



Alexander Park

Alexander Park is a development of 1, 2, 3, 4 and 5-bedroom homes, located in Aldershot, Hampshire.



Bellway



Live life in connected comfort

Contemporary living within an hour of waterloo

Set on the southern edge of Aldershot's town centre, Alexander Park presents a fantastic collection of modern, energy-efficient homes in a well-connected location. Comprising 1 and 2 bedroom apartments and 3, 4 and 5 bedroom houses that include parking to all plots and EV charging points, this attractive

new community is ideal for first-time buyers, families and commuters alike. With everyday essentials nearby, a strong choice of schools and excellent travel links to London, Alexander Park brings together contemporary comfort and convenience.

Discover the best of Aldershot

Everyday amenities, green spaces and city links on your doorstep

Located within walking distance of Aldershot town centre, Alexander Park enjoys all the essentials right on its doorstep. There is a choice of supermarkets close to home, while local banks, convenience stores, pharmacies and a post office are all easily accessible.

There are also plenty of things to do nearby, such as Westgate Retail and Leisure Park, which offers cinema, bowling and a choice of popular national chain restaurants. For shopping, the nearby Wellington Centre hosts a variety of high-street retailers and independent outlets, while Farnborough's Princes Mead Shopping Centre and Guildford's Friary offer even more choice within 10 and 30 minutes by road, respectively.

Even more excitement can be found at the nearby Alpine Snowsports dry skiing centre, while Aldershot Lido is a popular local landmark that opens in the summer months with waterslides, splash areas and plenty of green space for picnics. Alternatively, enjoy a relaxing afternoon at nearby Farnham Golf Club. The town also has a leisure centre with a gym and indoor pool, plus a theatre and live events venue at Princes Hall.

For those who love the outdoors, Rowhill Nature Reserve is a 55-acre natural area with walking trails, ponds and picnic spots – perfect for a family afternoon out. Alternatively, Caesar's Camp is a popular choice for windswept walks and scenic views, while Aldershot Park and Manor Park offer play areas, sports courts and skate facilities. Southwood Country Park is also within easy reach, while the expansive Surrey Hills Area of Outstanding Natural Beauty is within an hour's drive.

Alexander Park is well placed for education, with a number of primary and secondary options nearby. For further and higher education, Farnborough College of Technology is within cycling distance, and the University of Surrey in Guildford offers a wide range of degree-level courses.

Aldershot railway station is less than 10 minutes from the development by bike and offers regular direct services to London Waterloo, with journey times from 47 minutes. For road travel, the A331 connects the town to the A31 and the M3, offering easy access to the M25, Heathrow Airport and the national motorway network.





Development plan



1 & 2 Bedroom Apartments

 Rice Court
Plots 177-183

2 Bedroom Homes

 The Potter
Plots 243 & 244

3 Bedroom Homes

 The Mason
Plots 185, 192, 200, 203, 206 & 252

 The Lymner
Plots 171, 175, 176 & 204

 The Blemmere *Life*
Plots 194 & 247

 The Turner
Plots 172, 173, 174, 225, 226, 245 & 246

4 Bedroom Homes

 The Philosopher
Plots 186, 191, 199, 202, 213, 216 & 222

 The Reedmaker *Life*
Plots 201, 207, 212 & 217

 The Weaver
Plots 184, 193, 205 & 223

 The Bowyer
Plot 224

 The Wainwright
Plots 188, 189, 197, 198, 209, 210, 219, 220, 233, 234, 235 & 236

 The Falconer
Plots 214 & 215

5 Bedroom Homes

 The Millwright
Plots 187, 190, 208, 211, 218 & 221

1-4 Bedroom Homes

 Affordable Homes



Key to plan

v Visitor parking

Material Finishes

Ⓟ - Town Brick

Ⓢ - Town Contemporary

The site plan is drawn to show the relative position of individual properties. NOT TO SCALE. This is a two dimensional drawing and will not show land contours and gradients, boundary treatments, landscaping or local authority street lighting. Footpaths subject to change. For details of individual properties and availability please refer to our Sales Advisor.



The Potter

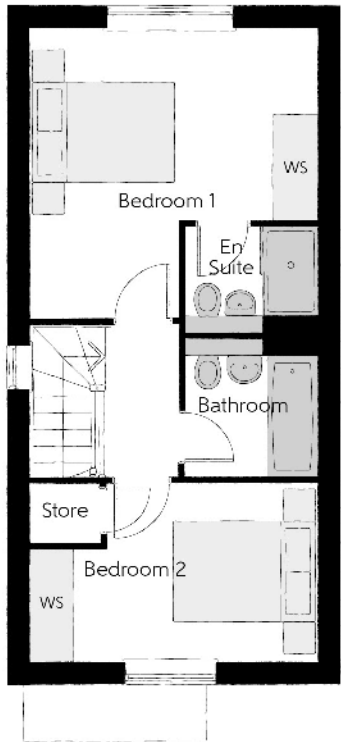
TWO BEDROOM HOME



Bellway

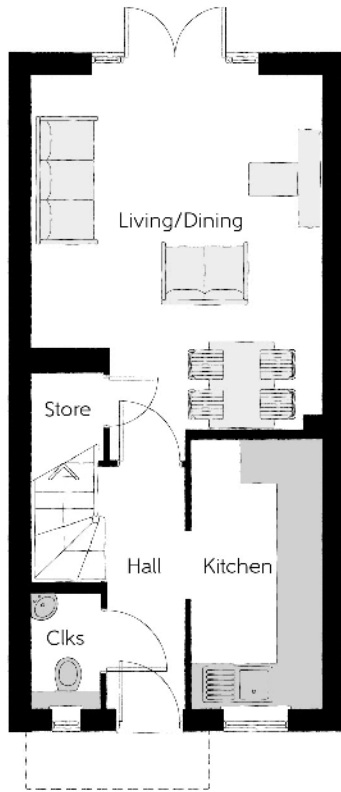
The Potter

Two bedroom home



First Floor

Bedroom 1	3.99m x 4.04m (max)	13'1" x 13'3" (max)
Bedroom 1 En Suite	1.86m x 1.48m	6'1" x 4'10"
Bedroom 2	3.93m x 2.44m (max)	12'10" x 8'1" (max)
Bathroom	1.86m x 1.92m	6'1" x 6'3"



Ground Floor

Kitchen	1.80m x 3.72m	5'11" x 12'2"
Living/Dining	3.99m x 4.92m (max)	13'1" x 16'2" (max)
Cloakroom	0.94m x 1.60m	3'1" x 5'3"

Clks - Cloakroom WS - Wardrobe Space (suggestion only, wardrobe not included)

Furniture arrangements are for illustrative purposes only. Items are not included, nor to scale.
The items shown in this key may be subject to change, and positions could vary from those indicated on this floorplan. Please refer to Sales Advisor for details of your selected plot. Computer generated image shown overleaf. External finishes, landscaping and configuration may vary from plot to plot. Please refer to Sales Advisor for further details. All dimensions are approximate and should not be used for carpet sizes, appliance spaces or furniture. We operate a policy of continuous improvement and individual features such as kitchen and bathroom layouts, doors, windows, garages and elevational treatments may vary from time to time. Consequently these particulars should be treated as general guidance only and do not constitute a contract, part of a contract or a warranty.



The Mason

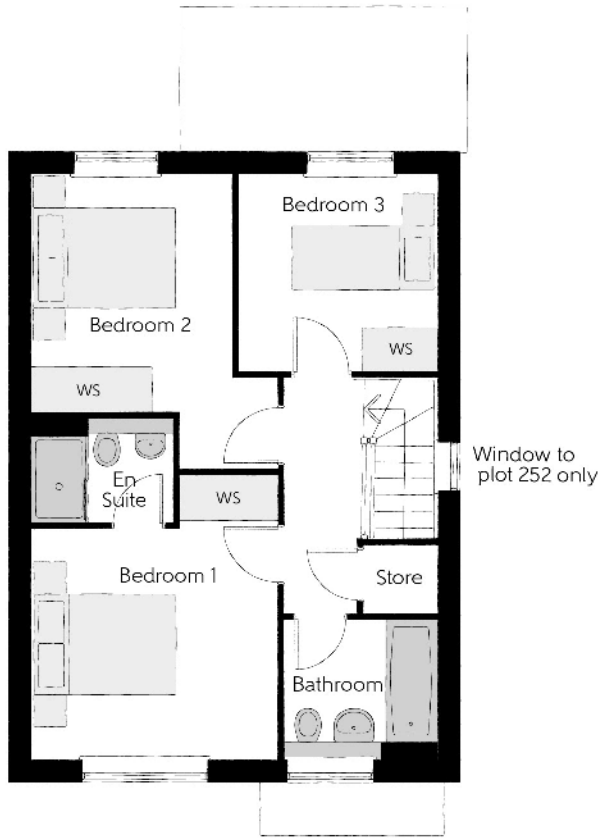
THREE BEDROOM HOME



Bellway

The Mason

Three bedroom home



First Floor		
Bedroom 1	3.44m x 3.93m (max)	11'3" x 12'11" (max)
Bedroom 1 En Suite	1.98m x 1.46m	6'6" x 4'9"
Bedroom 2	2.81m x 4.09m (max)	9'3" x 13'5" (max)
Bedroom 3	2.74m x 2.74m	9'0" x 9'0"
Bathroom	2.11m x 1.91m	6'11" x 6'3"



Ground Floor		
Kitchen/Family/Dining	5.64m x 6.05m (max) (max)	18'6" x 19'10" (max) (max)
Living Room	3.42m x 3.71m	11'3" x 12'2"
Utility	1.78m x 1.66m	5'10" x 5'5"
Cloakroom	0.96m x 1.91m	3'2" x 6'3"

Clks - Cloakroom WS - Wardrobe Space (suggestion only, wardrobe not included)

Furniture arrangements are for illustrative purposes only. Items are not included, nor to scale.

The items shown in this key may be subject to change, and positions could vary from those indicated on this floorplan. Please refer to Sales Advisor for details of your selected plot. Computer generated image shown overleaf. External finishes, landscaping and configuration may vary from plot to plot. Please refer to Sales Advisor for further details. All dimensions are approximate and should not be used for carpet sizes, appliance spaces or furniture. We operate a policy of continuous improvement and individual features such as kitchen and bathroom layouts, doors, windows, garages and elevational treatments may vary from time to time. Consequently these particulars should be treated as general guidance only and do not constitute a contract, part of a contract or a warranty.



The Lymner

THREE BEDROOM HOME



Bellway

The Lymner

Three bedroom home



First Floor

Bedroom 1	2.77m x 4.07m	9'1" x 13'4"
Bedroom 1 En Suite	2.77m x 1.48m	9'1" x 4'10"
Bedroom 2	2.79m x 3.07m	9'2" x 10'1"
Bedroom 3	3.03 m x 2.48m	9'11" x 8'2"
Bathroom	2.26m x 1.92m	7'5" x 6'4"



Ground Floor

Kitchen/Dining	2.71m x 5.64m	8'11" x 18'6"
Living Room	3.01m x 5.64m	9'10" x 18'6"
Utility	1.98m x 1.32m	6'6" x 4'4"
Cloakroom	0.95m x 1.51m	3'1" x 4'11"

Clks - Cloakroom WS - Wardrobe Space (suggestion only, wardrobe not included)

Furniture arrangements are for illustrative purposes only. Items are not included, nor to scale.

The items shown in this key may be subject to change, and positions could vary from those indicated on this floorplan. Please refer to Sales Advisor for details of your selected plot. Computer generated image shown overleaf. External finishes, landscaping and configuration may vary from plot to plot. Please refer to Sales Advisor for further details. All dimensions are approximate and should not be used for carpet sizes, appliance spaces or furniture. We operate a policy of continuous improvement and individual features such as kitchen and bathroom layouts, doors, windows, garages and elevational treatments may vary from time to time. Consequently these particulars should be treated as general guidance only and do not constitute a contract, part of a contract or a warranty.

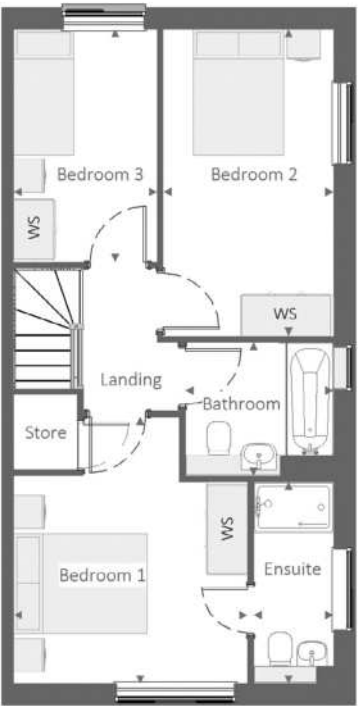


The BlemmereLife

THREE BEDROOM HOME

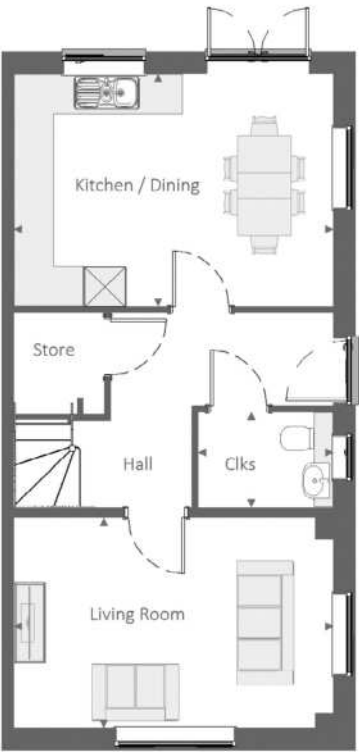


Bellway



First Floor

Bedroom 1	3.50 m	x	4.00 m	11'-6"	x	13'-1"
Bedroom 1 Ensuite	1.20 m	x	3.02 m	3'-11"	x	9'-11"
Bedroom 2	2.55 m	x	4.59 m	8'-4"	x	15'-1"
Bedroom 3	2.15 m	x	3.49 m	7'-1"	x	11'-6"
Bathroom	2.22 m	x	2.01 m	7'-3"	x	6'-7"



Ground Floor

Kitchen / Dining	4.79 m	x	3.49 m	15'-9"	x	11'-6"
Living Room	4.79 m	x	3.16 m	15'-9"	x	10'-4"
Cloakroom	2.03 m	x	1.43 m	6'-8"	x	4'-8"

Clks - Cloakroom WS - Wardrobe Space (suggestion only, wardrobe not included)

Furniture arrangements are for illustrative purposes only. Items are not included, nor to scale.

The items shown in this key may be subject to change, and positions could vary from those indicated on this floorplan. Please refer to Sales Advisor for details of your selected plot. Computer generated image shown overleaf. External finishes, landscaping and configuration may vary from plot to plot. Please refer to Sales Advisor for further details. All dimensions are approximate and should not be used for carpet sizes, appliance spaces or furniture. We operate a policy of continuous improvement and individual features such as kitchen and bathroom layouts, doors, windows, garages and elevational treatments may vary from time to time. Consequently these particulars should be treated as general guidance only and do not constitute a contract, part of a contract or a warranty. 1026BML / SB (Rev J).



The Turner

THREE BEDROOM HOME



Bellway

The Turner

Three bedroom home



Clks - Cloakroom WS - Wardrobe Space (suggestion only, wardrobe not included)

Furniture arrangements are for illustrative purposes only. Items are not included, nor to scale.

The items shown in this key may be subject to change, and positions could vary from those indicated on this floorplan. Please refer to Sales Advisor for details of your selected plot. Computer generated image shown overleaf. External finishes, landscaping and configuration may vary from plot to plot. Please refer to Sales Advisor for further details. All dimensions are approximate and should not be used for carpet sizes, appliance spaces or furniture. We operate a policy of continuous improvement and individual features such as kitchen and bathroom layouts, doors, windows, garages and elevational treatments may vary from time to time. Consequently these particulars should be treated as general guidance only and do not constitute a contract, part of a contract or a warranty.



The Philosopher

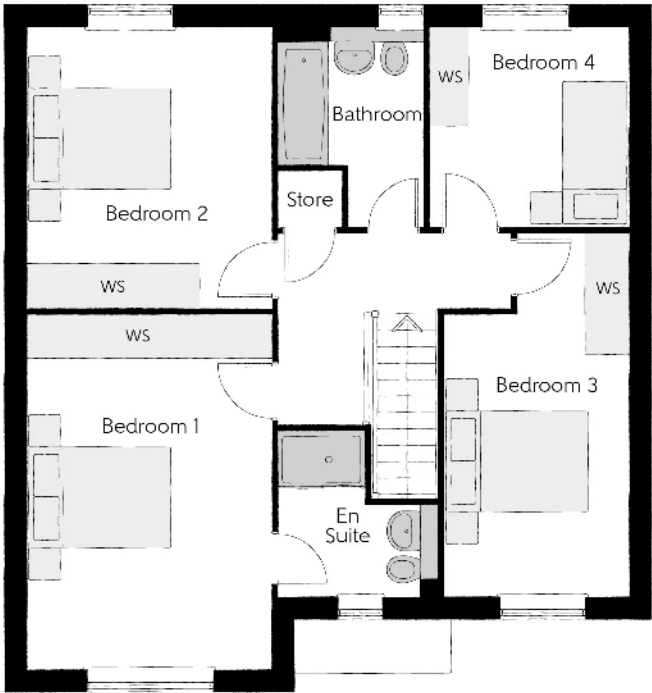
FOUR BEDROOM HOME



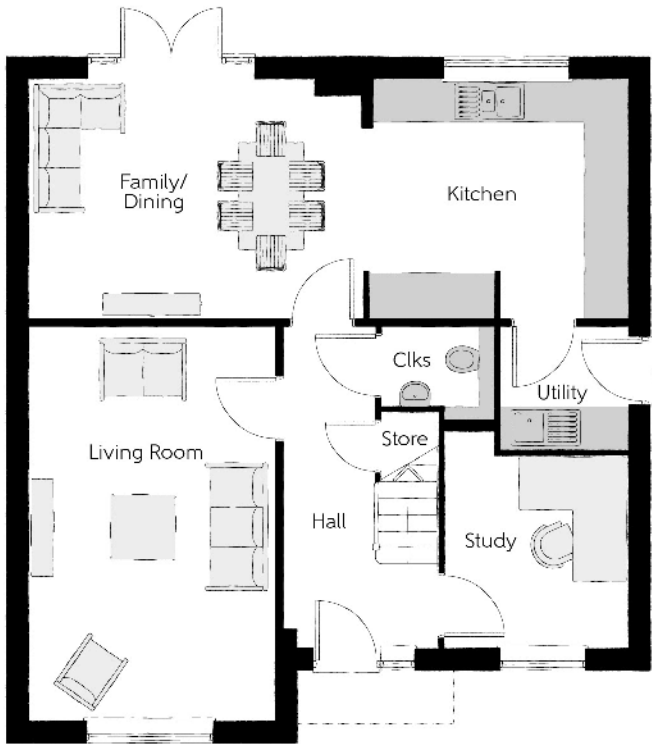
Bellway

The Philosopher

Four bedroom home



First Floor		
Bedroom 1	3.39m x 4.92m	11'1" x 16'2"
Bedroom 1 En Suite	2.23m x 2.27m (max)	7'4" x 7'5" (max)
Bedroom 2	3.39m x 3.89m	11'1" x 12'9"
Bedroom 3	2.55m x 5.03m (max)	8'4" x 16'6" (max)
Bedroom 4	2.75m x 2.76m	9'0" x 9'1"
Bathroom	2.02m x 2.76m (max)	6'8" x 9'1" (max)



Ground Floor		
Kitchen	3.71m x 3.30m	12'2" x 10'10"
Family/Dining	4.63m x 3.30m	15'2" x 10'10"
Living Room	3.39m x 5.45m	11'1" x 17'11"
Study	2.55m x 3.03m (max)	8'4" x 9'11" (max)
Utility	1.78m x 1.71m	5'10" x 5'7"
Cloakroom	1.57m x 1.32m (max)	5'2" x 4'4" (max)

Clks - Cloakroom WS - Wardrobe Space (suggestion only, wardrobe not included)

Furniture arrangements are for illustrative purposes only. Items are not included, nor to scale.
The items shown in this key may be subject to change, and positions could vary from those indicated on this floorplan. Please refer to Sales Advisor for details of your selected plot. Computer generated image shown overleaf. External finishes, landscaping and configuration may vary from plot to plot. Please refer to Sales Advisor for further details. All dimensions are approximate and should not be used for carpet sizes, appliance spaces or furniture. We operate a policy of continuous improvement and individual features such as kitchen and bathroom layouts, doors, windows, garages and elevational treatments may vary from time to time. Consequently these particulars should be treated as general guidance only and do not constitute a contract, part of a contract or a warranty.

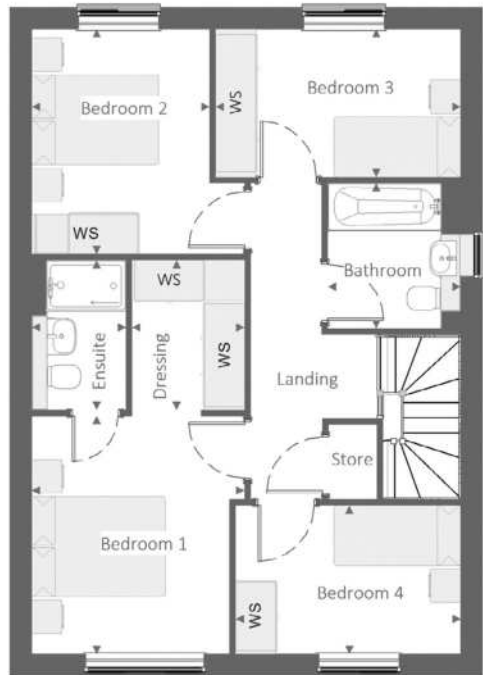


The Reedmaker*Life*

FOUR BEDROOM HOME

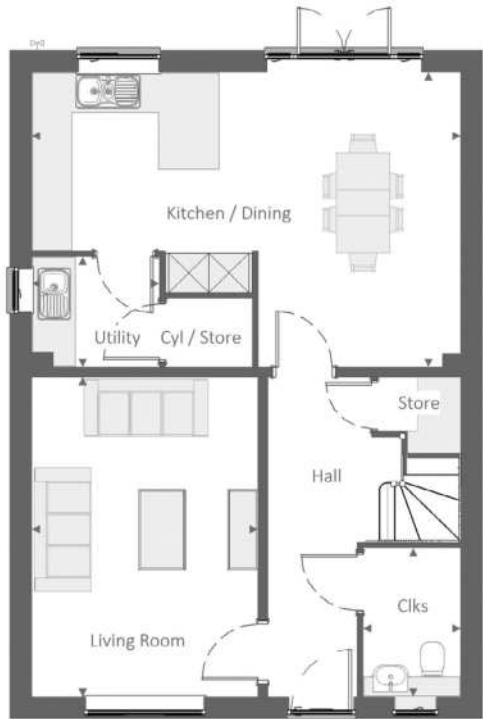


Bellway



First Floor

Bedroom 1	3.19 m x 3.56 m	10'-5" x 11'-8"
Dressing	1.69 m x 2.24 m	5'-6" x 7'-4"
Bedroom 1 Ensuite	1.41 m x 2.24 m	4'-8" x 7'-4"
Bedroom 2	2.66 m x 3.37 m	8'-9" x 11'-1"
Bedroom 3	3.67 m x 2.21 m	12'-1" x 7'-3"
Bedroom 4	3.37 m x 2.22 m	11'-1" x 7'-4"
Bathroom	1.99 m x 2.18 m	6'-6" x 7'-2"



Ground Floor

Kitchen / Dining	6.42 m x 4.42 m	21'-1" x 14'-6"
Living Room	3.39 m x 4.78 m	11'-1" x 15'-8"
Utility	1.91 m x 1.65 m	6'-3" x 5'-5"
Cloakroom	1.46 m x 2.22 m	4'-10" x 7'-4"

Clks - Cloakroom WS - Wardrobe Space (suggestion only, wardrobe not included)

Furniture arrangements are for illustrative purposes only. Items are not included, nor to scale.

The items shown in this key may be subject to change, and positions could vary from those indicated on this floorplan. Please refer to Sales Advisor for details of your selected plot. Computer generated image shown overleaf. External finishes, landscaping and configuration may vary from plot to plot. Please refer to Sales Advisor for further details. All dimensions are approximate and should not be used for carpet sizes, appliance spaces or furniture. We operate a policy of continuous improvement and individual features such as kitchen and bathroom layouts, doors, windows, garages and elevational treatments may vary from time to time. Consequently these particulars should be treated as general guidance only and do not constitute a contract, part of a contract or a warranty. 1309 / SB (Rev M).



The Weaver

FOUR BEDROOM HOME



Bellway

The Weaver

Four bedroom home



First Floor		
Bedroom 1	3.43m x 3.50m	11'3" x 11'6"
Dressing	2.01m x 2.91m	6'7" x 9'7"
Bedroom 1 En Suite	2.36m x 1.91m	7'9" x 6'3"
Bedroom 2	3.51m x 3.31m	11'6" x 10'10"
Bedroom 2 En Suite	2.24m x 1.40m	7'4" x 4'7"
Bedroom 3	3.51m x 2.91m	11'6" x 9'7"
Bedroom 4	3.19m x 2.73m	10'6" x 8'11"
Bathroom	3.19m x 2.10m	10'6" x 6'11"

Ground Floor

Kitchen/Dining	5.52m x 6.18m (max) (max)	18'1" x 20'3" (max) (max)
Family	3.21m x 3.59m	10'6" x 11'9"
Living Room	3.45m x 6.31m	11'4" x 20'8"
Utility	1.91m x 1.71m	6'3" x 5'7"
Cloakroom	0.90m x 1.94m	3'0" x 6'4"



Clks - Cloakroom WS - Wardrobe Space (suggestion only, wardrobe not included)

Furniture arrangements are for illustrative purposes only. Items are not included, nor to scale.

The items shown in this key may be subject to change, and positions could vary from those indicated on this floorplan. Please refer to Sales Advisor for details of your selected plot. Computer generated image shown overleaf. External finishes, landscaping and configuration may vary from plot to plot. Please refer to Sales Advisor for further details. All dimensions are approximate and should not be used for carpet sizes, appliance spaces or furniture. We operate a policy of continuous improvement and individual features such as kitchen and bathroom layouts, doors, windows, garages and elevational treatments may vary from time to time. Consequently these particulars should be treated as general guidance only and do not constitute a contract, part of a contract or a warranty.



The Bowyer

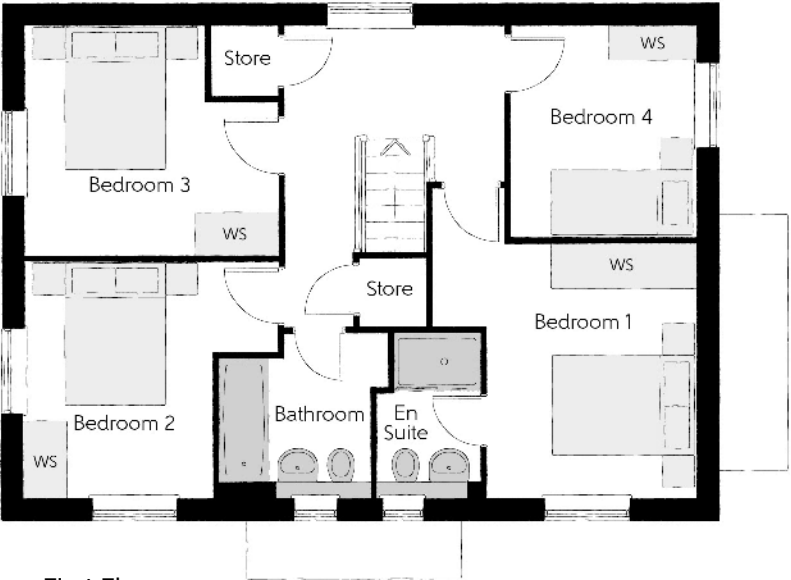
FOUR BEDROOM HOME



Bellway

The Bowyer

Four bedroom home



First Floor

Bedroom 1	3.66m x 3.52m (max)	12'0" x 11'7" (max)
Bedroom 1 En Suite	1.44m x 2.25m	4'9" x 7'5"
Bedroom 2	3.53m x 3.27m (max)	11'7" x 10'9" (max)
Bedroom 3	3.53m x 3.18m (max)	11'7" x 10'5" (max)
Bedroom 4	2.58m x 2.93m	8'6" x 9'7"
Bathroom	2.35m x 2.25m (max)	7'9" x 7'5" (max)



Ground Floor

Kitchen/Dining	4.39m x 6.54m (inc. bay)	14'5" x 21'5" (inc. bay)
Living Room	3.42m x 6.54m	11'3" x 21'5"
Utility	2.03m x 1.87m	6'8" x 6'2"
Cloakroom	1.00m x 1.65m	3'3" x 5'5"

Clks - Cloakroom WS - Wardrobe Space (suggestion only, wardrobe not included)

Furniture arrangements are for illustrative purposes only. Items are not included, nor to scale.

The items shown in this key may be subject to change, and positions could vary from those indicated on this floorplan. Please refer to Sales Advisor for details of your selected plot. Computer generated image shown overleaf. External finishes, landscaping and configuration may vary from plot to plot. Please refer to Sales Advisor for further details. All dimensions are approximate and should not be used for carpet sizes, appliance spaces or furniture. We operate a policy of continuous improvement and individual features such as kitchen and bathroom layouts, doors, windows, garages and elevational treatments may vary from time to time. Consequently these particulars should be treated as general guidance only and do not constitute a contract, part of a contract or a warranty.



The Wainwright

FOUR BEDROOM HOME



Bellway

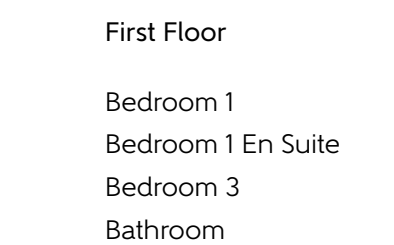
The Wainwright

Four bedroom home



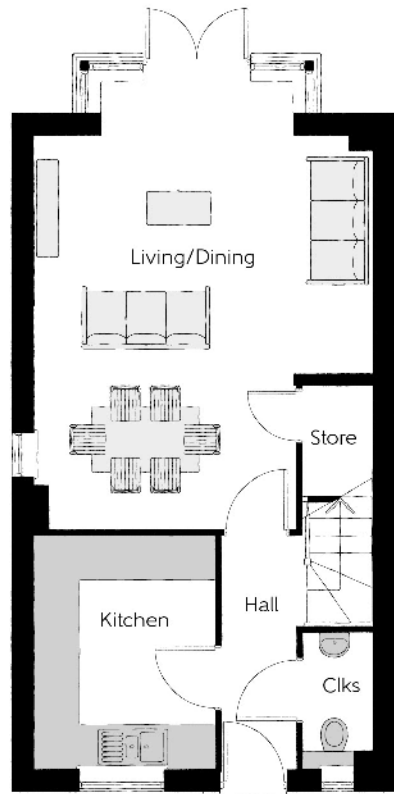
Second Floor

Bedroom 2	3.63m x 3.81m (max) (max)	11'11" x 12'6" (max) (max)
Bedroom 4	2.25m x 3.38m	7'5" x 11'1"
Shower	2.33m x 2.29m	7'8" x 7'6"



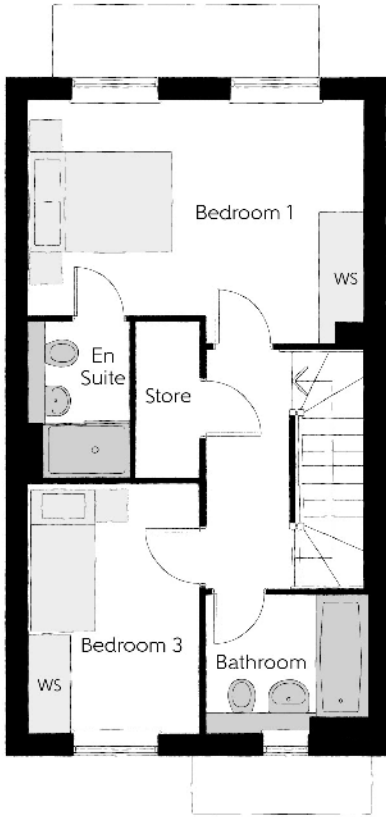
First Floor

Bedroom 1	4.67m x 3.37m (max) (max)	15'4" x 11'1" (max) (max)
Bedroom 1 En Suite	1.40m x 2.15m	4'7" x 7'1"
Bedroom 3	2.38m x 3.46m	7'10" x 11'4"
Bathroom	2.20m x 1.90m	7'3" x 6'3"



Ground Floor

Kitchen	2.50m x 3.17m	8'3" x 10'5"
Living/Dining	4.67m x 6.25m (max) (max)	15'4" x 20'6" (max) (max)
Cloakroom	0.94m x 1.90m	3'1" x 6'3"



Clks - Cloakroom WS - Wardrobe Space (suggestion only, wardrobe not included) RW - Roof Window ---- - Reduced Head Height

Furniture arrangements are for illustrative purposes only. Items are not included, nor to scale.
The items shown in this key may be subject to change, and positions could vary from those indicated on this floorplan. Please refer to Sales Advisor for details of your selected plot. Computer generated image shown overleaf. External finishes, landscaping and configuration may vary from plot to plot. Please refer to Sales Advisor for further details. All dimensions are approximate and should not be used for carpet sizes, appliance spaces or furniture. We operate a policy of continuous improvement and individual features such as kitchen and bathroom layouts, doors, windows, garages and elevational treatments may vary from time to time. Consequently these particulars should be treated as general guidance only and do not constitute a contract, part of a contract or a warranty.



The Falconer

FOUR BEDROOM HOME



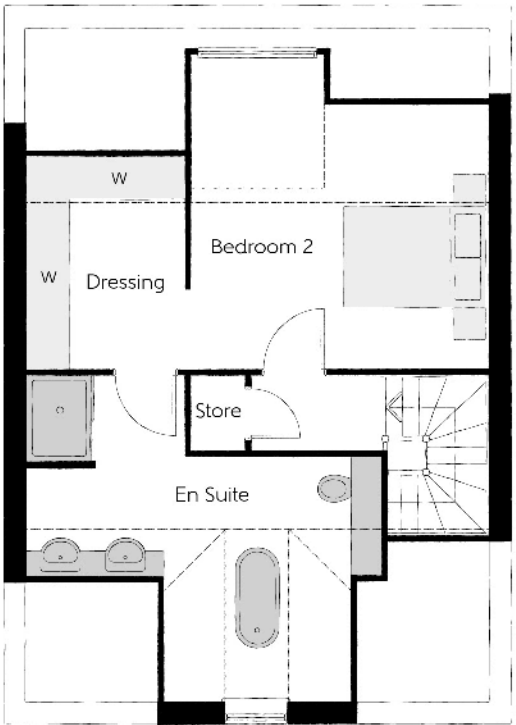
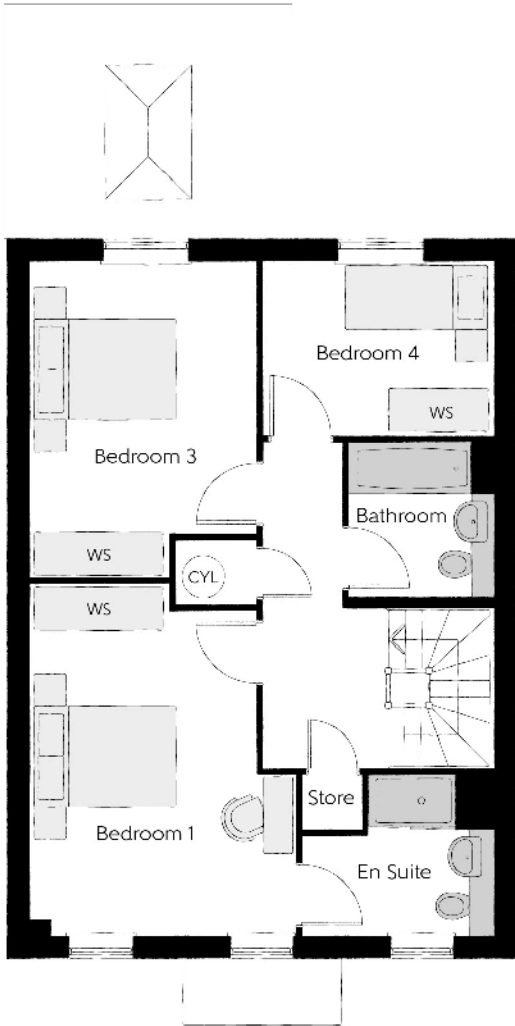
Bellway

The Falconer

Four bedroom home

Second Floor

Bedroom 2	3.63m x 3.81m (max) (max)	11'11" x 12'6" (max) (max)
Bedroom 2 En Suite	2.25m x 3.38m	7'5" x 11'1"
Dressing	2.33m x 2.29m	7'8" x 7'6"

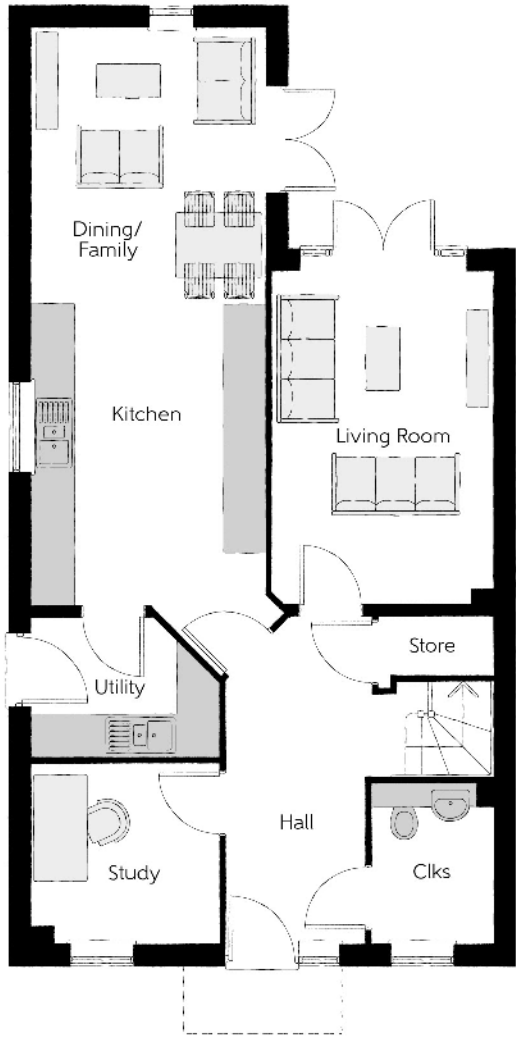


First Floor

Bedroom 1	4.67m x 3.37m (max) (max)	15'4" x 11'1" (max) (max)
Bedroom 1 En Suite	1.40m x 2.15m	4'7" x 7'1"
Bedroom 3	2.38m x 3.46m	7'10" x 11'4"
Bedroom 4	2.38m x 3.46m	7'10" x 11'4"
Bathroom	2.20m x 1.90m	7'3" x 6'3"

Ground Floor

Kitchen	2.50m x 3.17m	8'3" x 10'5"
Dining/Family	4.67m x 6.25m (max) (max)	15'4" x 20'6" (max) (max)
Living Room	4.67m x 6.25m	15'4" x 20'6"
Study	4.67m x 6.25m	15'4" x 20'6"
Cloakroom	0.94m x 1.90m	3'1" x 6'3"



Clks - Cloakroom W - Fitted Wardrobe Space (suggestion only, wardrobe not included) RW - Roof Window ---- - Reduced Head Height

Furniture arrangements are for illustrative purposes only. Items are not included, nor to scale.

The items shown in this key may be subject to change, and positions could vary from those indicated on this floorplan. Please refer to Sales Advisor for details of your selected plot. Computer generated image shown overleaf. External finishes, landscaping and configuration may vary from plot to plot. Please refer to Sales Advisor for further details. All dimensions are approximate and should not be used for carpet sizes, appliance spaces or furniture. We operate a policy of continuous improvement and individual features such as kitchen and bathroom layouts, doors, windows, garages and elevational treatments may vary from time to time. Consequently these particulars should be treated as general guidance only and do not constitute a contract, part of a contract or a warranty.



The Millwright

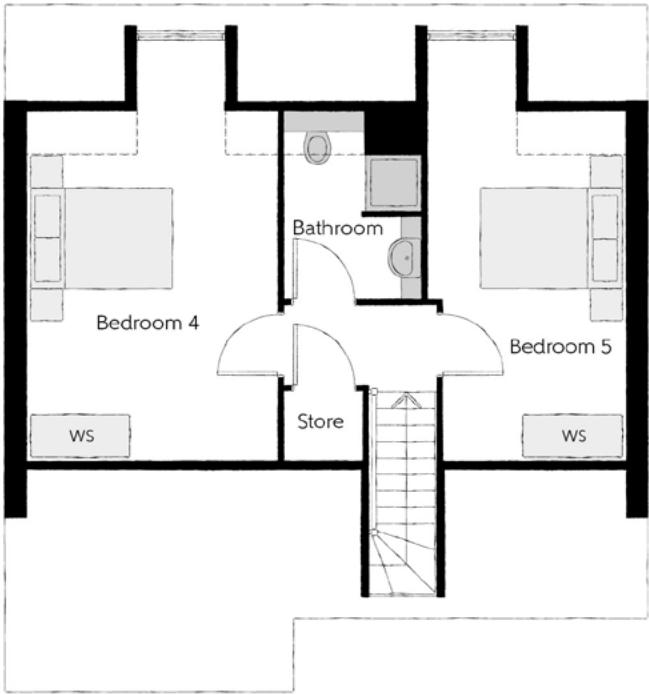
FIVE BEDROOM HOME



Bellway

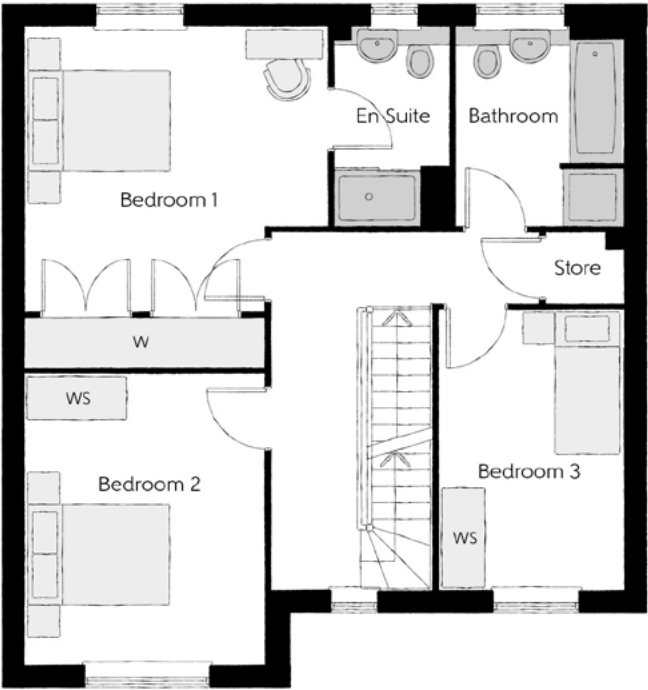
The Millwright

Five bedroom home



Second Floor		
Bedroom 4	4.91m x 3.46m (max) (max)	16'1" x 11'3" (max) (max)
Bedroom 5	4.91m x 2.75m (max) (max)	16'1" x 9'0" (max) (max)
Bathroom	2.33m x 2.29m	7'8" x 7'6"

First Floor		
Bedroom 1	4.25m x 3.95m (max) (max)	13'9" x 12'9" (max) (max)
Bedroom 1 En Suite	1.40m x 2.15m	4'7" x 7'1"
Bedroom 2	4.02m x 3.38m (max) (max)	13'1" x 11'0" (max) (max)
Bedroom 3	2.53m x 3.91m (max) (max)	8'3" x 12'8" (max) (max)
Bathroom	2.20m x 1.90m	7'3" x 6'3"



Ground Floor		
Kitchen	2.50m x 3.17m	8'3" x 10'5"
Dining/Family	4.63m x 4.47m (max) (max)	15'1" x 14'6" (max) (max)
Living Room	3.41m x 4.97m	11'1" x 16'3"
Study	2.50m x 2.62m	8'2" x 8'5"
Cloakroom	0.94m x 1.90m	3'1" x 6'3"

Clks - Cloakroom WS - Wardrobe Space (suggestion only, wardrobe not included) RW - Roof Window ---- - Reduced Head Height

Furniture arrangements are for illustrative purposes only. Items are not included, nor to scale.
The items shown in this key may be subject to change, and positions could vary from those indicated on this floorplan. Please refer to Sales Advisor for details of your selected plot. Computer generated image shown overleaf. External finishes, landscaping and configuration may vary from plot to plot. Please refer to Sales Advisor for further details. All dimensions are approximate and should not be used for carpet sizes, appliance spaces or furniture. We operate a policy of continuous improvement and individual features such as kitchen and bathroom layouts, doors, windows, garages and elevational treatments may vary from time to time. Consequently these particulars should be treated as general guidance only and do not constitute a contract, part of a contract or a warranty.



Rice Court

ONE AND TWO BEDROOM APARTMENTS



Bellway

Rice Court

One & two bedroom apartments



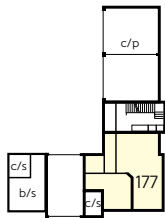
The Edgar – Plot 177

Kitchen	3.48m x 2.50m	11'4" x 8'2"
Living/Dining	3.82m x 3.60m	11'8" x 10'6"
Bedroom 1	4.10m x 3.25m	13'4" x 10'6"
Bedroom 1 En Suite	3.25m x 2.06m	10'6" x 6'7"
Bedroom 2	4.90m x 2.68m	16'0" x 8'7"
Bathroom	2.20m x 2.05m	7'3" x 6'9"
Total area	51.12 sq. m.	550 sq. ft.

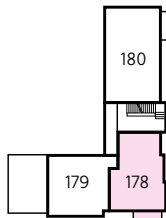


The Alfred – Plot 178

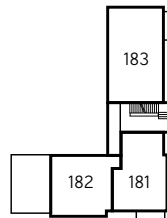
Kitchen	4.03m x 2.50m	13'2" x 8'2"
Living/Dining	4.36m x 3.61m	14'3" x 11'8"
Bedroom	4.73m x 2.75m	15'5" x 8'9"
Bathroom	2.16 x 2.01m	7'0" x 6'5"
Total area	51.12 sq. m.	550 sq. ft.



Ground Floor



First Floor



Second Floor

ASHP – Air Source Heat Pump MEV – ??? WS – Wardrobe Space (suggestion only, wardrobe not included)

Furniture arrangements are for illustrative purposes only. Items are not included, nor to scale.

The items shown in this key may be subject to change, and positions could vary from those indicated on this floorplan. Please refer to Sales Advisor for details of your selected plot. External finishes and landscaping may vary. Please refer to Sales Advisor for further details. All dimensions are approximate and should not be used for carpet sizes, appliance spaces or furniture. We operate a policy of continuous improvement and individual features such as kitchen and bathroom layouts, doors, windows, garages and elevational treatments may vary from time to time. Consequently these particulars should be treated as general guidance only and do not constitute a contract, part of a contract or a warranty.



The Canute – Plots 180 & 183

Kitchen	4.40m x 1.80m	14'4" x 5'9"
Living/Dining	4.55m x 3.58m	14'9" x 11'7"
Bedroom 1	3.57m x 3.41m	11'7" x 11'1"
Bedroom 2	3.72m x 3.08m	12'2" x 10'10"
Bathroom	2.01m x 1.50m	6'5" x 4'9"
Total area	51.12 sq. m.	550 sq. ft.



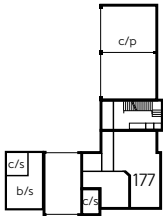
The Egbert – Plot 181

Kitchen	4.05m x 2.50m	13'2" x 8'2"
Living/Dining	4.36m x 3.38m	14'3" x 11'0"
Bedroom	4.73m x 2.75m	15'5" x 9'0"
Bathroom	2.23m x 2.01m	7'3" x 6'5"
Total area	51.12 sq. m.	550 sq. ft.

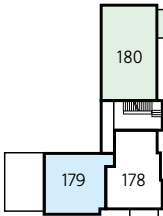


The Harold – Plots 179 & 182

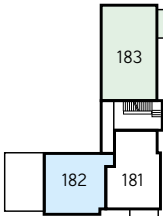
Kitchen	2.72m x 2.09m	8'9" x 6'8"
Living/Dining	4.90m x 3.48m	16'0" x 11'4"
Bedroom	3.76m x 3.49m	12'3" x 11'4"
Bathroom	2.15m x 2.01m	7'0" x 6'5"
Total area	51.12 sq. m.	550 sq. ft.



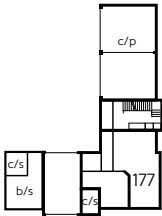
Ground Floor



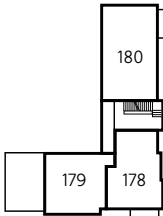
First Floor



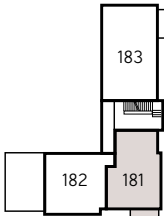
Second Floor



Ground Floor



First Floor



Second Floor

ASHP – Air Source Heat Pump MEV - ??? WS – Wardrobe Space (suggestion only, wardrobe not included)

Furniture arrangements are for illustrative purposes only. Items are not included, nor to scale.

The items shown in this key may be subject to change, and positions could vary from those indicated on this floorplan. Please refer to Sales Advisor for details of your selected plot. External finishes and landscaping may vary. Please refer to Sales Advisor for further details. All dimensions are approximate and should not be used for carpet sizes, appliance spaces or furniture. We operate a policy of continuous improvement and individual features such as kitchen and bathroom layouts, doors, windows, garages and elevational treatments may vary from time to time. Consequently these particulars should be treated as general guidance only and do not constitute a contract, part of a contract or a warranty.

ASHP – Air Source Heat Pump MEV - ??? WS – Wardrobe Space (suggestion only, wardrobe not included)

Furniture arrangements are for illustrative purposes only. Items are not included, nor to scale.

The items shown in this key may be subject to change, and positions could vary from those indicated on this floorplan. Please refer to Sales Advisor for details of your selected plot. External finishes and landscaping may vary. Please refer to Sales Advisor for further details. All dimensions are approximate and should not be used for carpet sizes, appliance spaces or furniture. We operate a policy of continuous improvement and individual features such as kitchen and bathroom layouts, doors, windows, garages and elevational treatments may vary from time to time. Consequently these particulars should be treated as general guidance only and do not constitute a contract, part of a contract or a warranty.

Houses Specification

			1 & 2 Bedroom Homes	3 Bedroom Homes	4 Bedroom Homes	5 & 6 Bedroom Homes
FINISHES	Entrance Doors	GRP Insulated Door	●	●	●	●
	Loft Hatch	Loft Hatch - Hinged Drop Down ** ††	●	●	●	●
	Ceilings	Crown White Matt Emulsion	●	●	●	●
	Walls	Crown White Matt Emulsion	●	●	●	●
	Floors	Concrete Ground Floor / Chipboard First Floor	●	●	●	●
	Window Cills	White Satin MDF	●	●	●	●
	Stairs	Timber Stair - White Satin MDF Strings	●	●	●	●
	Balusters	White Satin Stop Chamfered Balusters	●	●	●	●
	Newel Posts	White Satin Stop Chamfered Newels	●	●	●	
		Oak Stop Chamfered Newels				●
	Newel Caps	White Satin Flat Top Newel Caps	●	●	●	
		Oak Flat Top Newel Caps				●
	Handrail	White Satin Heavy Duty Handrail	●	●	●	
		Oak Heavy Duty Handrail				●
	Skirting	White Satin 94x14 MDF Grooved & Chamfered	●	●	●	
		White Satin 120x14 MDF Grooved & Chamfered				●
	Architrave	White Satin 69x18 MDF Grooved & Chamfered	●	●	●	●
	Internal Doors	White Pre Finished Vertical Panel Internal Doors	●	●	●	●
	Ironmongery	Chrome SR100 Door Furniture	●	●	●	
		Chrome SR700 Door Furniture				●
	Wardrobes	Hinged Fitted Wardrobes to Bed 1				●
KITCHEN	Carcass	Premium Grade 18mm thk Colour Matched Carcass	●	●	●	●
	Frontals	Bellway Band B options &	●	●		
		Bellway Band C options &			●	
		Bellway Band D options &				●
	Units	Frontal Matching Table Ends	●	●		
		Unit Framing			●	●
	Worktops	40mm Square Edge Worktops with upstand	●	●	●	●
	Kitchen Sink	Leisure Eaton Single Bowl SS Sink & Aquamono Tap (inc Sink Liner)	●			
		Leisure Eaton Bowl & Half SS Sink & Aquamono Tap (inc Sink Liner)		●		
		Leisure Albion Bowl & Half SS Sink & Aquamono Tap (inc Sink Liner)			●	
		Leisure Nimbus Bowl & Half SS Sink & Aquamono Tap (inc Sink Liner)				●
	Utility Sink	Leisure Eaton Single Bowl SS Sink & Aquamono Tap (inc Sink Liner)		●		
		Leisure Albion Single Bowl SS Sink & Aquamono Tap (inc Sink Liner)			●	
		Leisure Nimbus Single Bowl SS Sink & Aquamono Tap (inc Sink Liner)				●
	Appliances Oven	Zanussi Single Oven ZOHE2X2	●	●		
		Zanussi Single Oven ZOHNX3X1			●	
		A E G Single Oven BPK556260M				●
	Appliances Hob	Zanussi 4 Burner Gas Hob ZGNN640X & SS Splashback	●	●		
		Zanussi 4 Burner Gas Hob ZGNN642X & SS Splashback			●	
		A E G 5 Burner Gas Hob HCB75420YM & SS Spashback				●
WET ROOMS	Appliances Extractor	Cooker Hood Extractor LFC316X	●	●	●	
		A E G Cooker Hood Extractor DKB4950M				●
	Appliances Microwave	Zanussi Combination Microwave ZVENM6X3			●	
		A E G Combination Microwave KMK565060X ††				●
	Appliances Fridge Freezer	Fridge Freezer Space Only	●	●		
		Zanussi 70/30 Fridge Freezer ZNFN18ES3			●	
		Zanussi 70/30 Fridge Freezer ZNFN18ES3 (2no)				●
	Appliance Dishwasher	Removeable Unit (inc Feed & Waste) ‡	●	●		
		Zanussi Dishwasher ZDLN1521			●	●
	Appliance Washing Machine	Washing Machine Space Only (inc Feed & Waste)	●	●	●	●
	Cloaks - WC	Roca DEBBA WC with Concealed Cistern & PL2 Flush Plate ^^^	●	●	●	●
	Cloaks - Basin	Roca Wash Hand Basin ^	●	●	●	●
	Cloaks - Brassware	Bristan PISA Small Basin Chrome Mixer Tap	●	●	●	●
	Cloaks - Tiling	Band 2 Tiling to WC Boxing, Splashback Tiling to WHB, Flat Edge Chrome Trim	●	●		
		Band 3 Tiling to WC Boxing, Splashback Tiling to WHB, Flat Edge Chrome Trim			●	●
	Bathroom - WC	Roca DEBBA WC with Concealed Cistern & PL2 Flush Plate ^^^	●	●	●	●
	Bathroom - Basin	Roca DEBBA 500 WHB with Full Pedestal ~~~	●	●		
		Roca DEBBA 550 WHB with Semi Pedestal ~~~			●	●
	Bathroom - Bath	Roca OSLO Acrylic Bath & Rigid Bath Panel	●	●	●	●
	Bathroom - Brassware	Bristan PISA Chrome Bath & Basin Mixer Taps	●	●		
		Bristan SAIL Chrome Bath & Basin Mixer Taps			●	●
	Bathroom - Shower Tray	Mira FLIGHT Low Shower Tray with Mira ELEVATE Enclosure ^	●	●	●	●
	Bathroom - Shower	Mira MINIMAL Single Thermostatic Shower ##	●	●		
		Mira MINIMAL Single Thermostatic Shower &&			●	●

			1 & 2 Bedroom Homes	3 Bedroom Homes	4 Bedroom Homes	5 & 6 Bedroom Homes
WET ROOMS	Bathroom - Tiling	1/2 Height Tiling (Band 2) to Wet Walls with Flat Edged Chrome Trim *** †††	●	●		
		1/2 Height Tiling (Band 3) to Wet Walls with Flat Edged Chrome Trim *** †††			●	●
	En-Suite - WC	Roca DEBBA WC with Concealed Cistern & PL2 Flush Plate ^^^	●	●	●	●
	En-Suite - Basin	Roca DEBBA 450 WHB with Full Pedestal	●	●		
		Roca DEBBA 550 WHB with Semi Pedestal			●	●
	En-Suite - Bath	Roca OSLO Acrylic Bath & Rigid Bath Panel ^				●
	En-Suite - Brassware	Bristan PISA Chrome Bath & Basin Mixer Taps	●	●		
		Bristan SAIL Chrome Bath & Basin Mixer Taps			●	●
	En-Suite - Shower Tray	Mira FLIGHT Low Shower Tray with Mira ELEVATE Enclosure ^	●	●	●	●
	En-Suite - Shower	Mira MINIMAL Single Thermostatic Shower ‡‡‡	●	●	●	
MECHANICAL		Mira MINIMAL Dual Thermostatic Shower				●
	En-Suite - Tiling	1/2 Height Tiling (Band 2) to Wet Walls with Flat Edged Chrome Trim †††	●	●		
		1/2 Height Tiling (Band 3) to Wet Walls with Flat Edged Chrome Trim †††			●	●
	Waste Water Heat Recovery	Waste Water Heat Recovery System ^		●	●	●
	Boiler	Ideal LOGIC Combination Boiler (Cb) ^^	●	●		
		Ideal LOGIC Boiler & ThermaQ Evocyl HW Cylinder (HOb) ^^			●	●
	Controls	Google Nest 3RD Gen Dual Zone Learning Thermostat	●	●	●	●
	Radiators	Stelrad Compact Steel Panel Radiators with Grilles	●	●	●	●
	Towel Warmers	Flat Chrome to Bathroom			●	
		Flat Chrome to Bathroom & En-Suite 1				●
ELECTRICS	Ventilation	Window Trickle Ventilators with Mechanical Extract Fans (system 3) dMEV	●	●	●	●
	Safety - Heat	Heat Detector DET #	●	●	●	●
	Safety - Fire	Optical Smoke Detectors LD2 D2 DET	●	●	●	●
	Safety - Carbon	Fireblitz FHCO-BH Carbon Monoxide Detector	●	●	●	●
	Consumer Unit	Wylex Consumer Unit	●	●	●	●
	Sockets & Switches	Electrium CASA White Fittings	●	●	●	●
	Lighting	Pendant Fitting to Habitable Rooms	●	●	●	●
	Lighting - Kitchen	White Recessed Spot Lights	●	●		
		Polished Chrome Recessed Spot Lights			●	●
	Lighting - Kitchen Under Unit	High Output Tri-Light				●
EXTERNALS & MISC	Lighting - Bathroom & En-Suites	White Recessed Spot Lights	●	●		
		Polished Chrome Recessed Spot Lights			●	●
	Lighting - External	External Light Clifton Brushed Steel Up/Down (Front & Rear)	●	●	●	●
	Communications - TV	TV Point to Living Room & Bedroom 1	●	●	●	●
	Communications - Data	Cat 6 Network Point to Living Room & Study	●	●	●	●
	Broadband	Ultrafast Fibre Connectivity (Openreach, Virgin Media, Hyperoptic) ‡‡	●	●	●	●
	Build Method	Masonry ~	●	●	●	●
	Ecological	Hedgehog Highway fencing adaption	●	●	●	●
	Garages Electrics	Light & Power Point to incurtilage Garages ~	●	●	●	●
	Maintenance	External Tap			●	●
WET ROOMS	Number Plaque	Artisan Number Plaque	●	●		
	Footpath & Patio	Buff PCC Flags 450x450x32's	●	●	●	●
	Garages	Steel Panel Up & Over Canopy Garage Door ~	●	●	●	●
	Drives	Bitmac Black ###	●	●	●	●
	Landscaping - Front	Medallion Turf & Landscape Planting ~~	●	●	●	●
	Landscaping - Rear	Rotavated Topsoil ~~	●	●	●	●
	EV Charging Terminal	Universal Socket 7kW * †	●	●	●	●

* refer site layout

** fire rated as necessary

*** full height around bath where shower provided as standard

† electrical infrastructure upgrade maybe required

†† where layout allows

††† full height to shower enclosure

‡ at build stage

‡‡ consult with sales executive for specific development details

‡‡‡ flow regulator fitted to bath mixer if serving single thermostatic shower

 & fed via combination boiler

^ housetype dependent - liaise with sales executive

^^ housetype dependent on particular 4 bed housetypes - liaise with Sales Advisor

^^^ inc soft close mechanism seat on 4 & 5 Bedroom Homes ONLY

kitchen only

over bath ONLY incorporating MIRA bath screen 1.1863.004 where no shower elsewhere in dwelling

plot dependent

~ plot specific, refer site layout

Apartment Specification

		1 Bedroom Apartments	2 Bedroom Apartments	3 Bedroom Apartments
FINISHES				
Entrance Doors	Apartment Entrance Door White Gloss Fire Rated Solid Core	●	●	●
Ceilings	Crown White Matt Emulsion	●	●	●
Walls	Crown White Matt Emulsion	●	●	●
Window Cills	White Satin MDF	●	●	●
Skirting	White Satin 94x14 MDF Grooved & Chamfered	●	●	●
Architrave	White Satin 69x18 MDF Grooved & Chamfered	●	●	●
Internal Doors	White Pre Finished Vertical Panel Internal Doors	●	●	●
Ironmongery	Chrome SR100 Door Furniture	●	●	●
KITCHEN				
Carcass	Premium Grade 18mm thk Colour Matched Carcass	●	●	●
Frontals	Bellway Band B options ^^	●	●	●
	Bellway Band C options ^^			
Units	Frontal Matching Table Ends	●	●	●
Worktops	40mm Square Edge Worktops with upstand	●	●	●
Kitchen Sink	Leisure Linear Bowl & Half SS Sink & TCAF3 Tap (inc Sink Liner)	●	●	●
Appliances Oven	Zanussi Single Oven ZOB343X	●	●	●
Appliances Hob	Zanussi Induction Hob ZITN643K & SS Splashback	●	●	●
Appliances Extractor	Zanussi Cooker Hood Extractor ZHC60156X	●	●	●
Appliances Fridge Freezer	Fridge Freezer Space Only	●	●	●
Appliance Dishwasher	Removeable Unit (inc Feed & Waste) **	●	●	●
Appliance Washing Machine	Washing Machine Space within A/C (inc Feed & Waste)	●	●	●
WET ROOMS				
Bathroom - Storage	Recessed Storage Shelving	●	●	●
Bathroom - WC	Roca DEBBA WC with Concealed Cistern & PL1 Flush Plate ‡	●	●	●
Bathroom - Basin	Roca Debba 520 Semi Recessed WHB no Pedestal M4(2)	●	●	●
Bathroom - Bath	Roca OSLO Acrylic Bath & Rigid Bath Panel	●	●	●
Bathroom - Brassware	Bristan PISA Chrome Bath & Basin Mixer Taps	●	●	●
Bathroom - Shower	Over Bath Mira MINIMAL Single Thermostatic Shower †††	●		
Bathroom - Tiling	1/2 Height Tiling (Band 2) to Wet Walls with Flat Edged Chrome Trim * †	●	●	●
En-Suite - WC	Roca DEBBA WC with Concealed Cistern & PL1 Flush Plate ‡		●	●
En-Suite - Basin	Roca Debba 520 Semi Recessed WHB no Pedestal M4(2)		●	●
En-Suite - Brassware	Bristan PISA Chrome Basin Mixer Taps		●	●
En-Suite - Shower Trav	Mira FLIGHT Low Shower Tray with Mira ELEVATE Enclosure ††		●	●

		1 Bedroom Apartments	2 Bedroom Apartments	3 Bedroom Apartments
MECHANICAL				
Hot Water	Hot Water Heat Pump Cylinder	●	●	●
Controls	Heaters individually controlled	●	●	●
Radiators	Electric Panel Heaters	●	●	●
Towel Warmers	Flat Chrome to Bathroom (electric)	●	●	●
Ventilation	Window Trickle Ventilators with Mechanical Extract Fans (system 3) MEV	●	●	●
ELECTRICS				
Safety - Heat	Heat Detector DET ‡‡	●	●	●
Home Working	Dedicated Power, USB & Data Points	●	●	●
Communications - Access	Audio Entry System	●	●	●
Safety - Fire	Optical Smoke Detectors LD2 D2 DET	●	●	●
Safety - Carbon	Honeywell XC100 Carbon Monoxide Detector	●	●	●
Consumer Unit	Wylex Consumer Unit	●	●	●
Sockets & Switches	Electrium CASA White Fittings	●	●	●
USB Locations	Kitchen, Living Room & Bedroom 1 ONLY	●	●	●
Shaver / Toothbrush Point	Bathroom ONLY	●	●	●
Lighting	Pendant Fitting to Habitable Rooms	●	●	●
Lighting - Kitchen	White Recessed Spot Lights	●	●	●
Lighting - Bathroom & En-Suites	White Recessed Spot Lights	●	●	●
Communications - TV	TV Point to Living Room & Bedroom 1	●	●	●
Communications - Voice	Telephone Point to Living Room	●	●	●
Communications - Data	Cat 6 Network Point to Living Room & Bedroom 1	●	●	●
Communications - Satellite	Dual Connection Satellite Points to Living Room	●	●	●
Broadband	Ultrafast Fibre Connectivity Openreach	●	●	●
EXTERNALS & MISC				
Shared Parking Areas	Bitmac Black ‡‡‡	●	●	●
Build Method	Masonry ^	●	●	●

* full height around bath where shower provided as standard
** at build stage
*** flow regulator fitted to bath mixer if serving single thermostatic shower & fed via combination boiler
† full height to shower enclosure
†† housetype dependent - liaise with sales executive
††† inc MIRA bath screen 1.1863.004

‡ inc soft close mechanism seat on 4 & 5 Bedroom Homes ONLY
‡‡ kitchen only
‡‡‡ plot dependent
^ plot specific, refer site layout
^^ soft close mechanism to doors & drawers



Dedicated to delivering quality

An enhanced specification is the hallmark of The Artisan Collection.

All of our homes are equipped with superior fixtures and fittings, which dovetails perfectly with our focus on design and attention to detail.

Expertly crafted using state-of-the-art materials, your brand new home is finished to a high standard so you can start enjoying it the moment you get your keys.

"The overall finish of the home is perfect – Bellway really pay attention to every detail. The team were amazing and supported us throughout the process."

SAMI AND SARA,
HANWOOD PARK

Homes to love, built with care

From the first day you visit our sales centre, to the day you move in and beyond, we aim to provide a level of service and after-sales care that is second to none.

A number of quality checks are carried out on each of our new homes through the construction process and on completion. Once your home has passed all of our quality checks, you will be invited to attend your Home Demonstration which will provide an opportunity for you to understand the various elements of your new home. On move in day, our site and sales teams will be there to ensure that everything goes as smoothly as possible.

Once you've settled into your new home, Bellway has experienced after-sales teams to provide support and assistance whenever you need it. Our homes come with a 10-year NHBC Buildmark policy, or an equivalent warranty from another provider. This includes deposit protection from exchange of contracts, a two-year builder warranty from legal completion, and then eight years of structural defects insurance cover.*

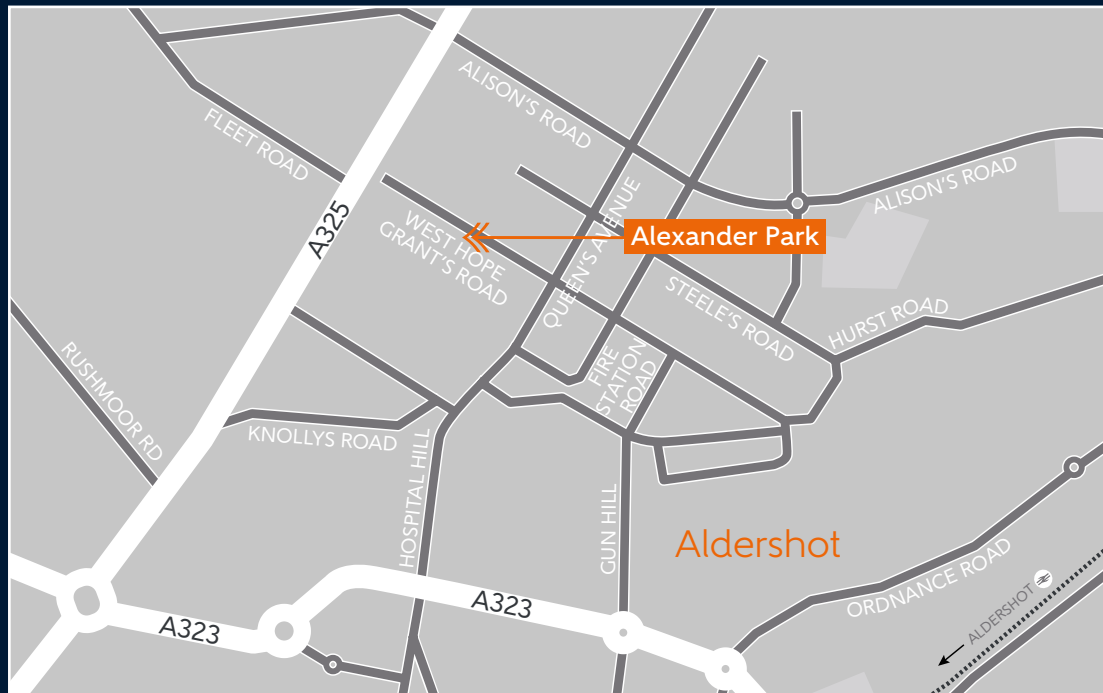
We are confident that our approach to building and selling quality homes, coupled with our customer care processes, will provide you with many years of enjoyment in your new home.



*For more details, visit the NHBC website at www.nhbc.co.uk/homeowners and view the 'Welcome to NHBC warranty and insurance' brochure, or refer to the brochure of your alternative warranty provider.



How to find us



Bellway abides by the New Homes Quality Code (NHQC), an independent industry code established to champion quality new homes and deliver better outcomes for customers.

Bellway

