



WESTBOURNE PARK

Opening Summer 2025,
Find your place.

EVERYTHING YOU NEED FOR A LIFE WELL-LIVED





The Building



09

Sat alongside the water's edge of the Grand Union Canal and a short walk from London's most-charming neighbourhood, Notting Hill.

With 332 private studios, an on-site wellness studio with a pool and gym, canal side restaurant, cinema room, listening lounge, recording studio and a 10th floor panoramic guest lounge - it's our most exciting project to date and we can't wait to show you around.

Bookings now open.
Doors open, this June.



1. The Beds



2. 10th Floor Lounge



3. The Grounding (Wellness Studio)



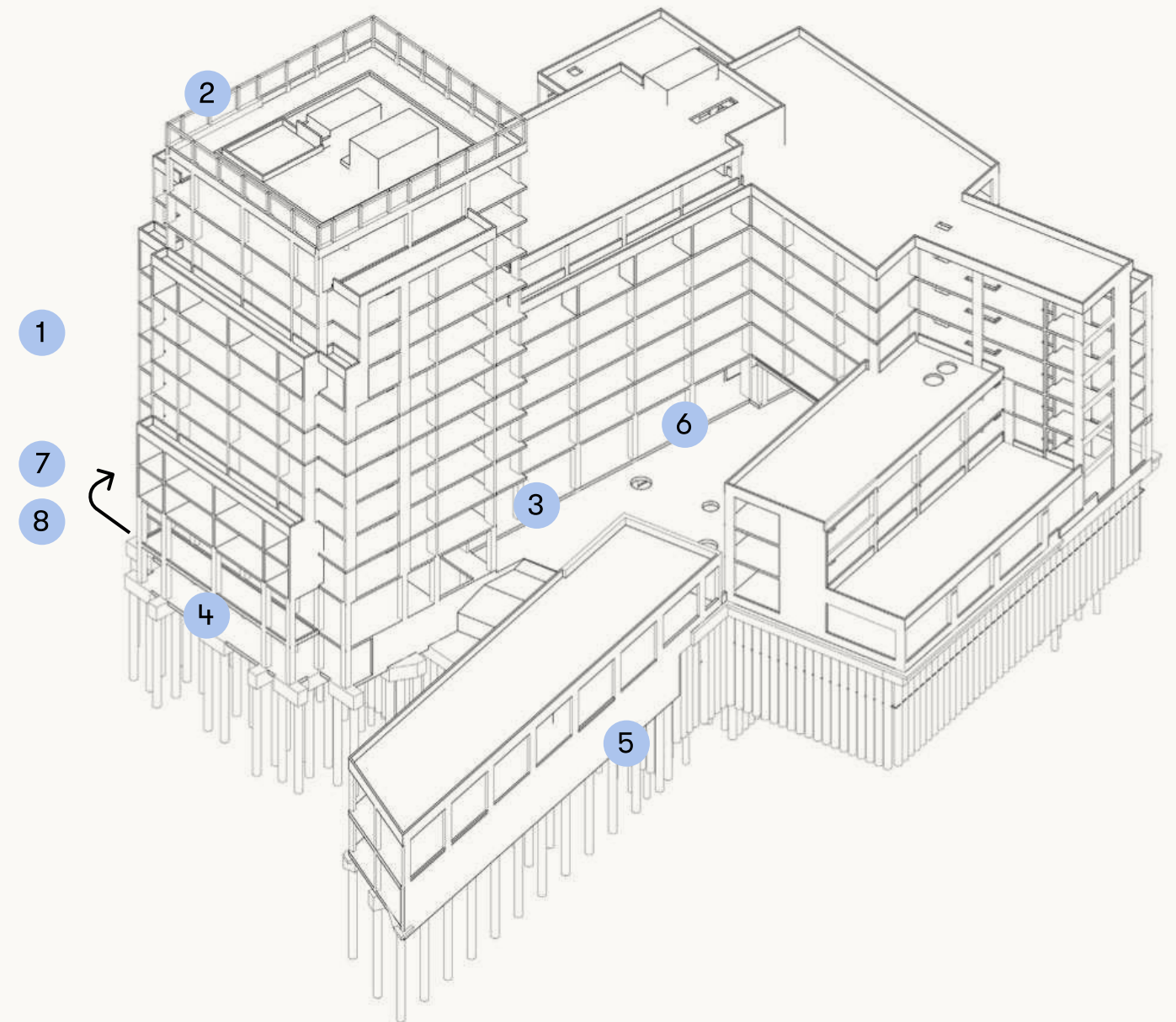
4. Canal (Restaurant & Bar)



5. Meadow (Creative Workspace)



6. Ground Floor Lounge



7. Cinema



8. Listening Lounge



“A building is not just a place to be, but a way to be”
– Frank Lloyd Wright

Our Studios

A space to call your own.



14

Home-from-home self-contained studios all fully furnished with everything you need. Suitable for singles or a couple, with three studio categories to choose from, you can find the perfect studio for you.





Bedroom

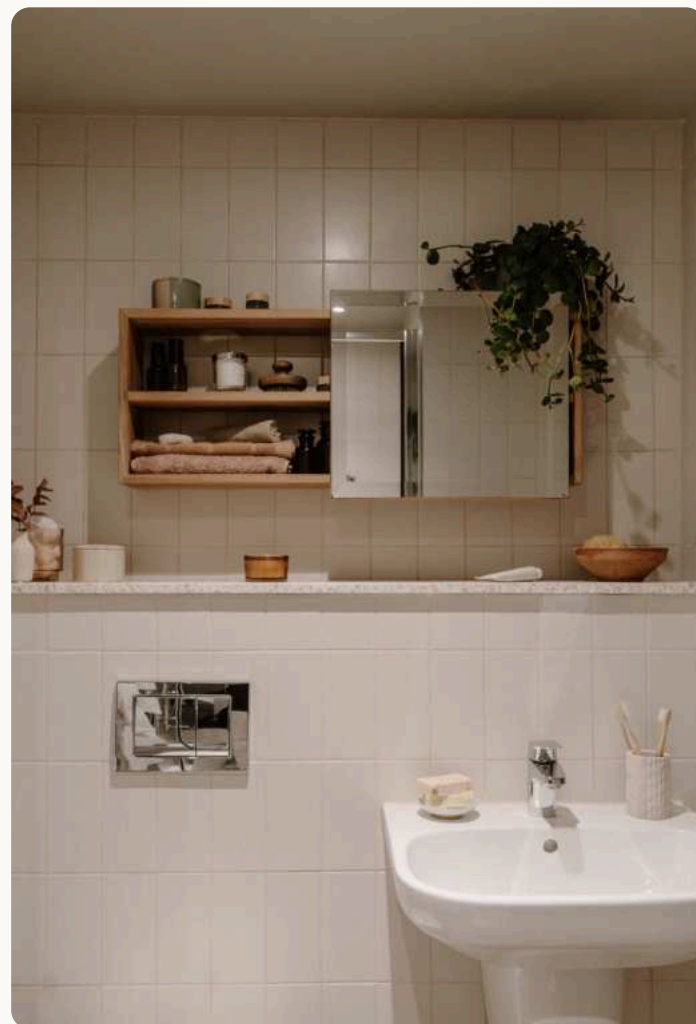
All studios come with a bespoke bed, Hypnos mattress and bed linen included. There's a wardrobe and shelving for all your clothes and underbed storage for anything larger.

There's a smart TV for when you want to chill, and super-fast wifi when you need to get your head down.



Kitchen

The kitchen is equipped with top of the range appliances including a microwave oven, countertop hob and fridge/freezer. Crockery, cutlery and glassware are all provided along with a dining table and seating.



Bathroom

All en suites include a waterfall shower, towels and organic, vegan and sustainably-sourced shampoo, conditioner and body wash.



Housekeeping

We provide regular housekeeping for each private studio which includes fresh bed linen and towels as well as topping up your bathroom amenities.



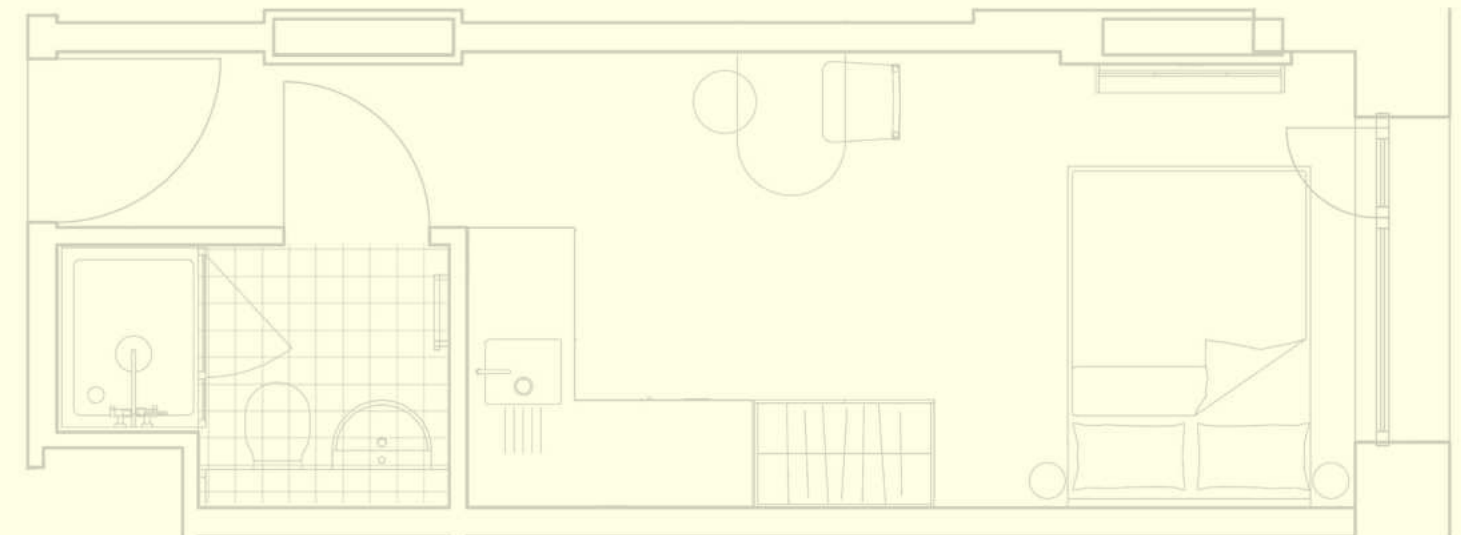
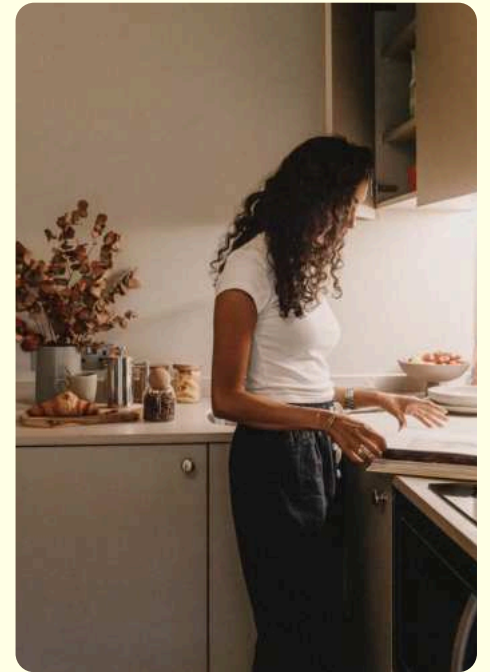
Classic Studio

All you need



A cosy space, just for you.
Everything has its place in
this cleverly designed studio.

Starting from from £2,295 p/m



Floor Plan

(Indicative only; each studio may vary slightly in layout.)





Classic Plus Studio

27

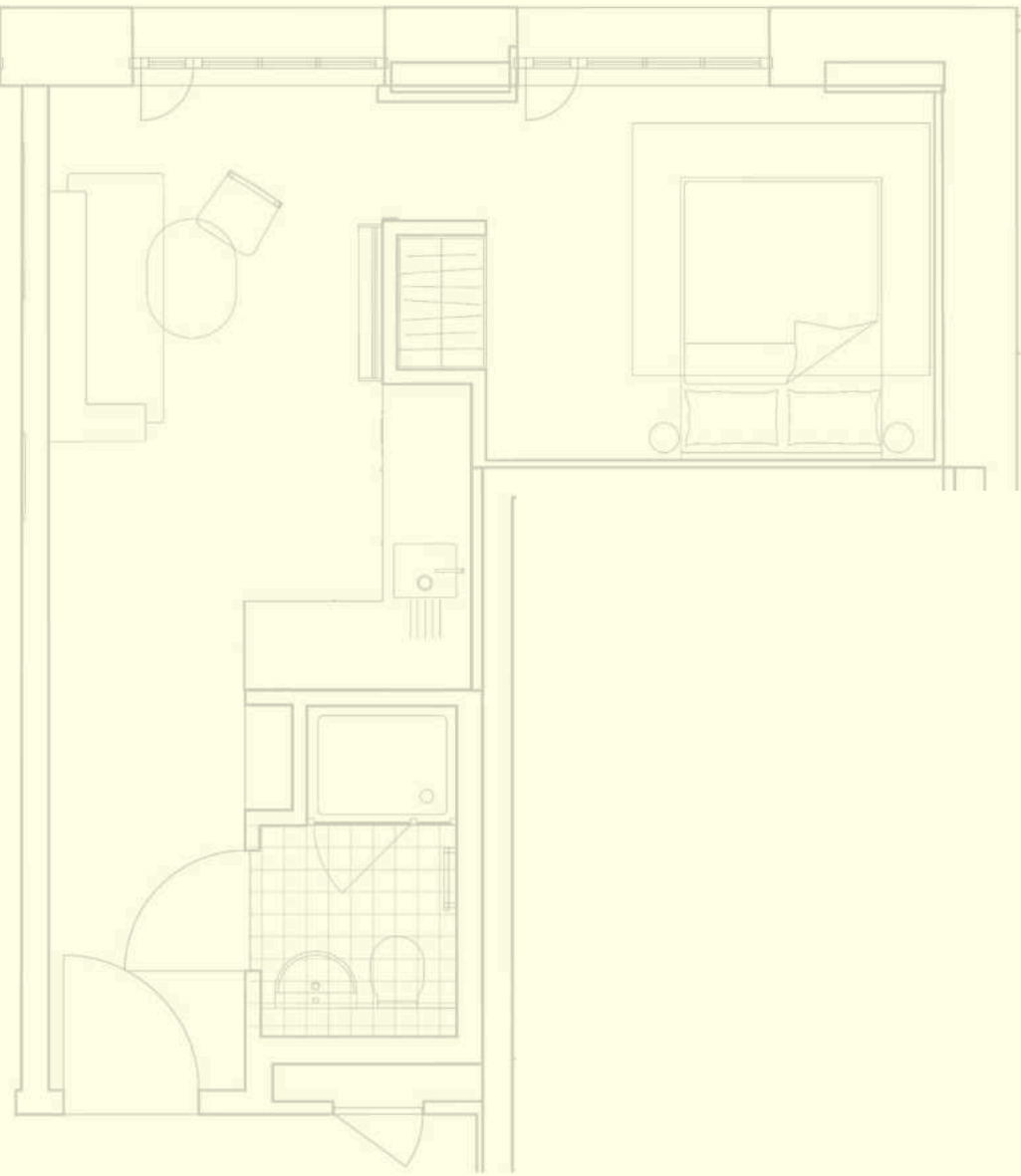
A little extra

A little extra goes a long way, a more spacious studio all to yourself or ideal for a couple, including a luxury bed, kitchen and living area and en suite bathroom.

Starting from £2,595 p/m



Floor Plan



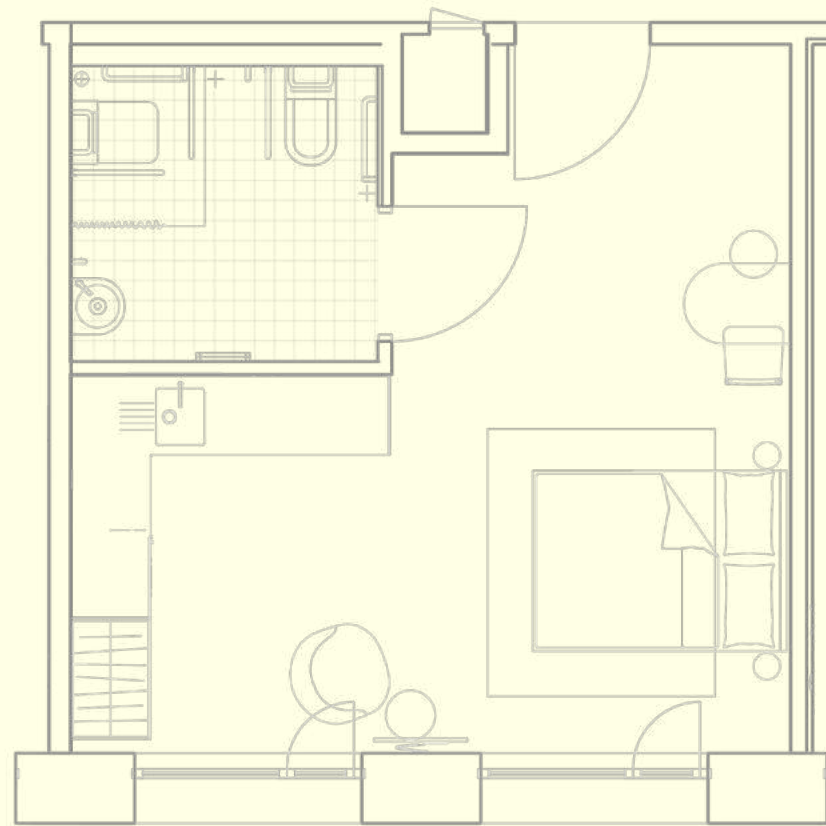
(Indicative only; each studio may vary slightly in layout.)



Accessible Studios

Our accessible studios, like all the others, have everything you need but are just a little more spacious. All are wheelchair accessible with larger bathrooms that have assistance rails should you need them.

Starting from from £2,595 p/m



Floor Plan



(Indicative only; each studio may vary slightly in layout.)

Our Living Spaces

Spaces to share



Our living spaces are at the heart of it all, consciously designed for guests to feel at home. Whether you're looking to relax in our guest lounges or make use of our lobby cafe and bar, feel at home wherever you are.

10th Floor Panoramic Guest Lounge

The 10th floor of the building has been designed just for our guests staying with us.

There's working nooks, a full kitchen with dining areas perfect for hosting, and the city skyline as your backdrop.





36

The Grounding

Our wellness studio

With natural light wells, timber accents, earthy tones, and oxygenating plants, our wellness studio invites guests to disconnect from the noise of daily life, reconnecting with their mind and body, finding their grounding.



Swimming Pool

Take a dip in our indoor swimming pool, or relax poolside on one of our loungers. There are changing rooms and towels for guests to borrow.



Sauna, Steam & Plunge

Sit a while in our sauna and steam room and enjoy the stillness, then reawaken body and mind with an ice-cold plunge shower.



Fully Kitted Out Gym

All guests are welcome to spend time in our state-of-the-art gym which is fully kitted out with high spec functional and cardiovascular equipment, ready to get your sweat on. Free for all guests to use.

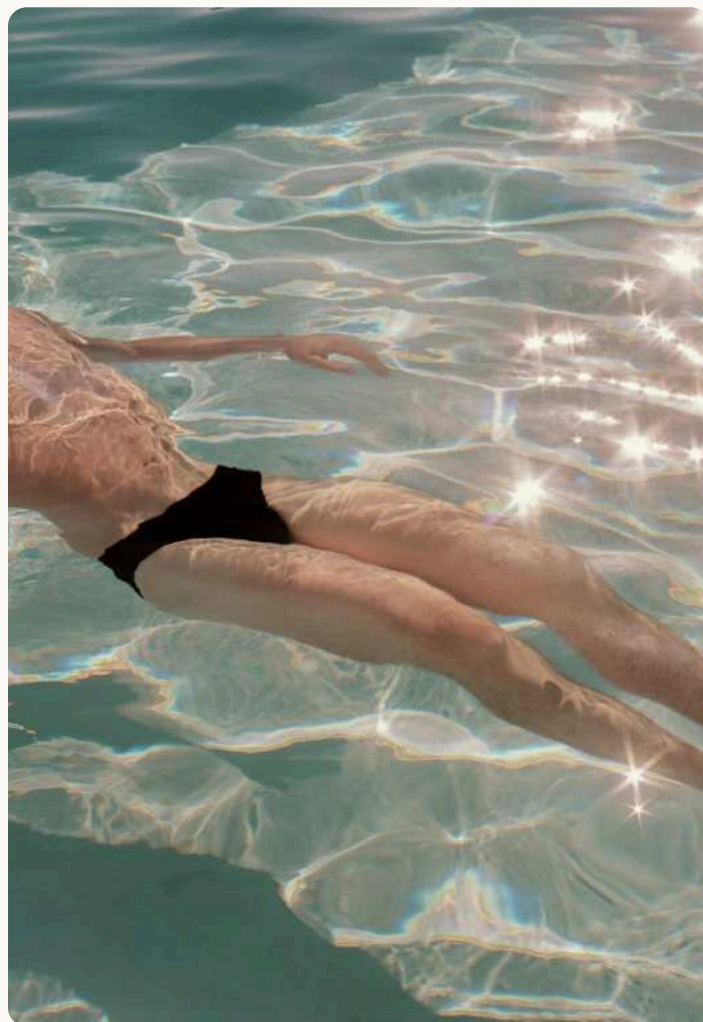
Anyone staying over a month, is offered a free consultation with the team to create a personal health and wellness programme.

Treatment Room

Our treatment room, hidden within The Grounding, offers restorative, calming treatments including osteopathy, massage and physiotherapy.



The Grounding



Class Studio

Our holistic wellness schedule, made to raise heart rates and lower blood pressure – changing with the seasons, includes a range of disciplines such as reformer Pilates, yoga, HIIT and our signature ‘Groundwork’ session. Guests can join our daily sessions for just £10-15 per class.



Canal-side dining



Located on the water's edge, Canal's our first on-site all-day dining spot, serving up seasonal, modern European dishes for guests and locals to enjoy.

From the team behind Crispin and Bistro Freddie.

Bookings open May 2025.





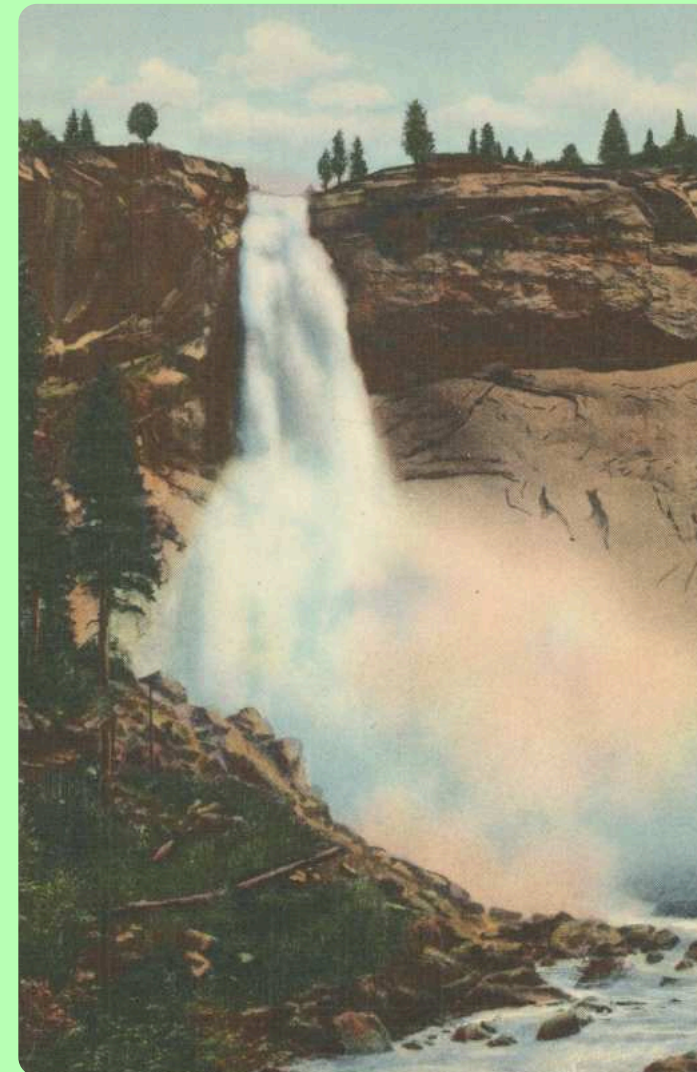
MEADOW

Dedicated creative workspace



Introducing ‘Meadow,’ our first creative workspace, designed with artists and makers in mind. Made up of hot-desk-style Workbenches and private lockable Workshops, all with flexible memberships that suit you. If you’re looking to surround yourself with like-minded folk, why not work from Meadow?

If you’re interested in finding out more about our workspace, you can email hello@workfrommeadow.com or head to our website.



A space for ideas to grow

And that's not all

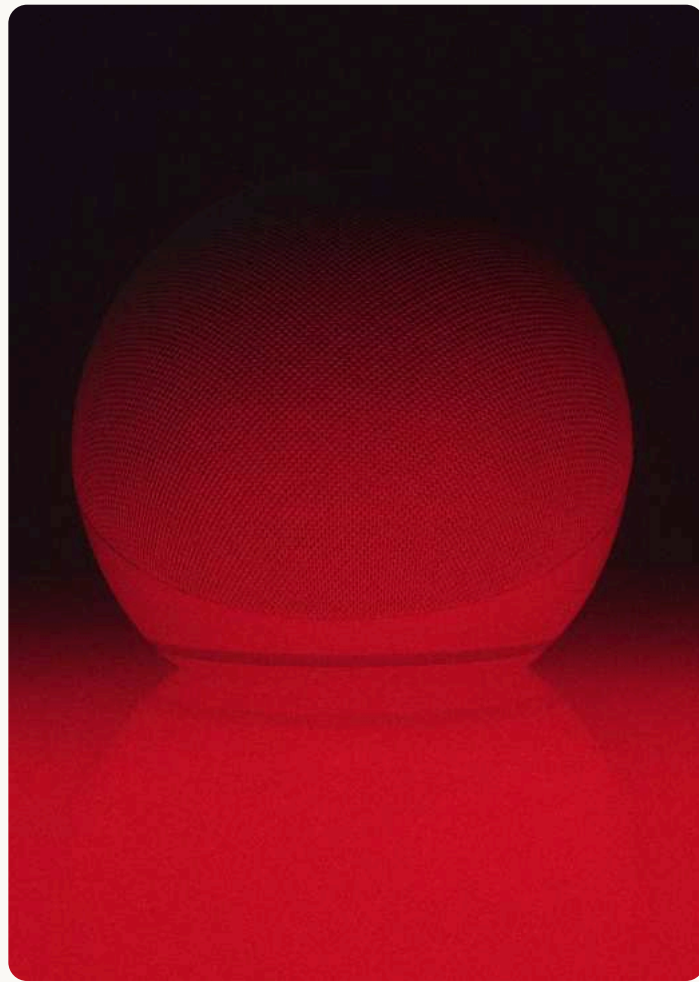


Listening Lounge

Whether you're a vinyl selector or a music lover, take some time out, and immerse yourself in our dedicated sound lounge, with regularly programmed artist listening sessions.

Cinema Room

We've cherry-picked the screening program with our guests in mind; sit back, relax, and enjoy a mix of arthouse, thought-provoking documentaries, and independent movies.



Studio Subrosa

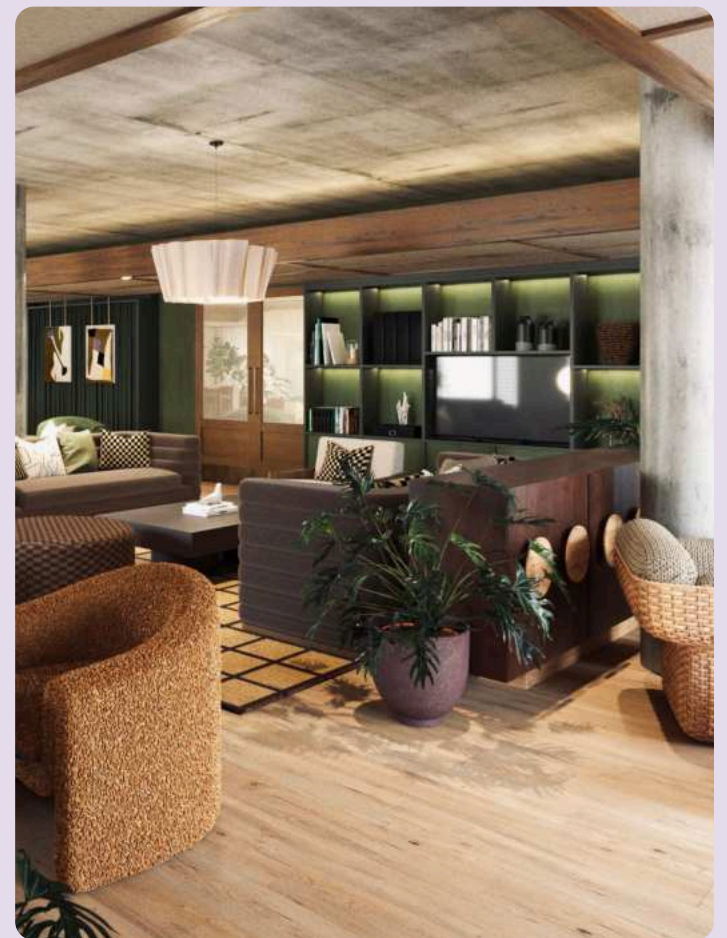
A state-of-the-art music studio, created in collaboration with the team behind East London institution FOLD. Hidden within the building is this secretive haven for artists, record labels and producers to create music for tomorrow.

Booking applications open in May.

EVERYTHING YOU

NEED

IS



INCLUDED



Laundry Room

Free use of our washers, dryers and ironing equipment as well as complimentary detergent and fabric softener.



House Bikes & Cycle Workshop

Borrow one of our Temple Cycles and take to the city on two-wheels. Or if you've got your own bicycle, keep it roadworthy in our dedicated service station.



Dedicated Community Team

If you need anything during your stay with us, there's always a member of our team on hand to help.

One Monthly Bill

Everything is included in one monthly bill. That means no additional costs for council tax, utilities, wifi, water, gym - we've taken care of it all.



Cultural Events Programme

Connecting with your neighbours



55

Whether you're curious to learn a new skill, or want to break bread with fellow guests and locals, our thoughtfully curated programme offers something for everyone. From intimate live performances, to interactive workshops and culinary pop-ups, all expertly curated to bring guests and locals together.



Supper Clubs



Wild Swimming Trips



Exhibitions & Art Residencies



Craft Workshops



Nature Walks



Live Music Sessions



Cocktail Making Classes



Your Pace Or Mine

Neighbourhood Run Club



No matter your running ability,
join us for a community 5km run
around the neighbourhood. Open for
guests and locals alike.

The Area

On your doorstep



Located alongside The Grand Union Canal, with a melting pot of foodie hotspots, independent boutiques, idyllic architecture and a diverse creative scene and is just round the corner from Notting Hill.

A few spots we recommend

Eateries, Pubs + Bars

The Oak
Flora Wines
The Pelican
The Tin Shed
Lowry & Baker
Caractère
Little Yellow Door
Golborne Deli & Wine

Cafés

Klear Labs
Layla Bakery
Fabrique
Butter Bakery Café
Flying Horse Coffee
W10 Coffee + Deli

“When a man is tired of London,
he’s tired of life” – Samuel Johnson

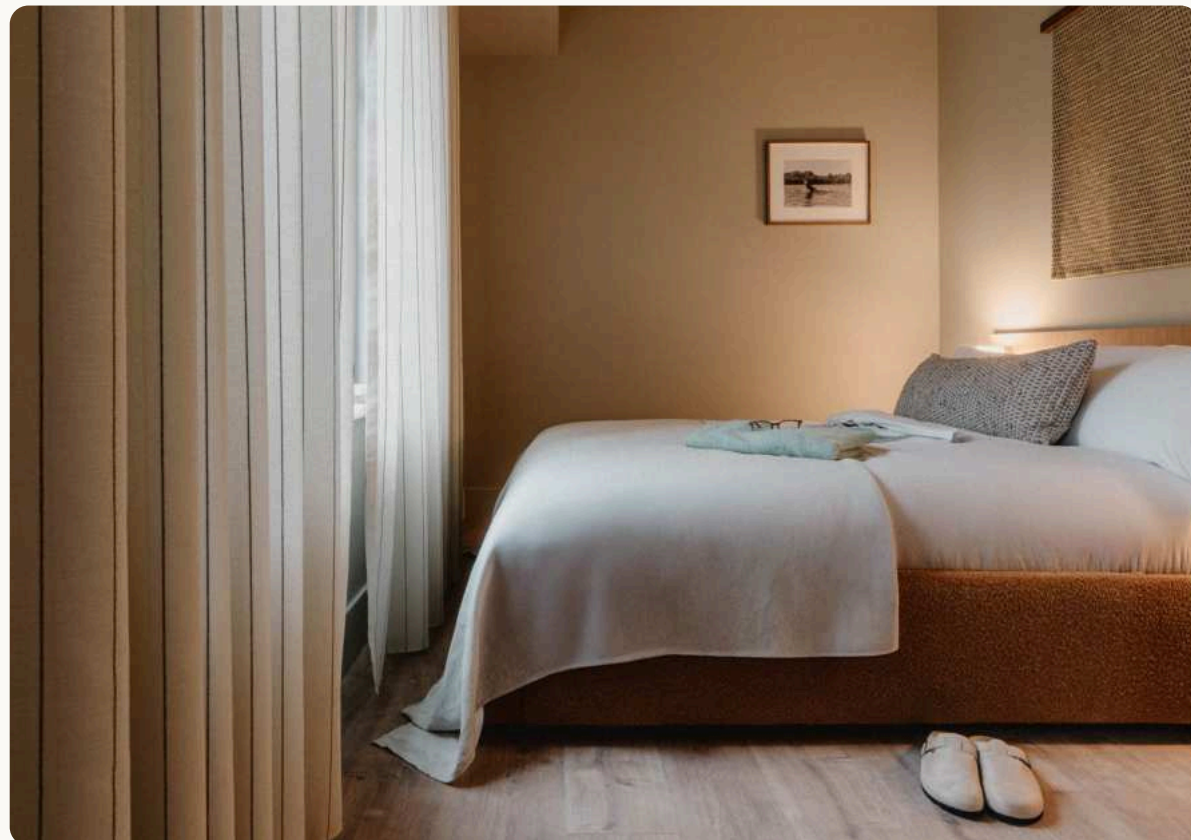


If You Need To Travel

Distance to local areas

5 min	Westbourne Park Station
15 min	Notting Hill
30 min	Kensington Gardens
25 min	Piccadilly Circus

Westbourne Park,
11 Woodfield Road, London W9 2BA



66

+44 (0) 207 117 2926

(THE END)

We hope to see you one day

