

21 Scotsdowne Road, Trumpington,
Cambridge, CB2 9HU

Guide price £500,000



21 Scotsdowne Road

Trumpington, CB2 9HU

- 5 minutes by bike to the Station and Addenbrookes
- No chain
- Garage, driveway and additional garden
- EPC rating C

A three-bedroom semi-detached house of over 1000 sq. ft, with a garage and no chain, in an excellent, sought-after location, just a mile from the Addenbrookes campus and the new Cambridge South Station (opening soon).

This well-maintained family house includes a living room with a large window to the front and a fireplace with a gas fire, a separate dining room has patio doors to the garden. The kitchen is fitted with base and eye-level storage, plenty of worktops and spaces for appliances, and a door to the garden.

Upstairs, there is a family bathroom and a separate WC. All three bedrooms are a good size, two are doubles and have built-in storage.

The house has double-glazed windows and gas central heating.

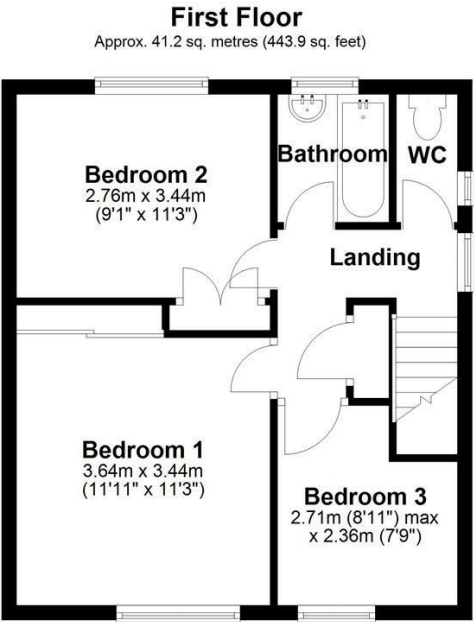
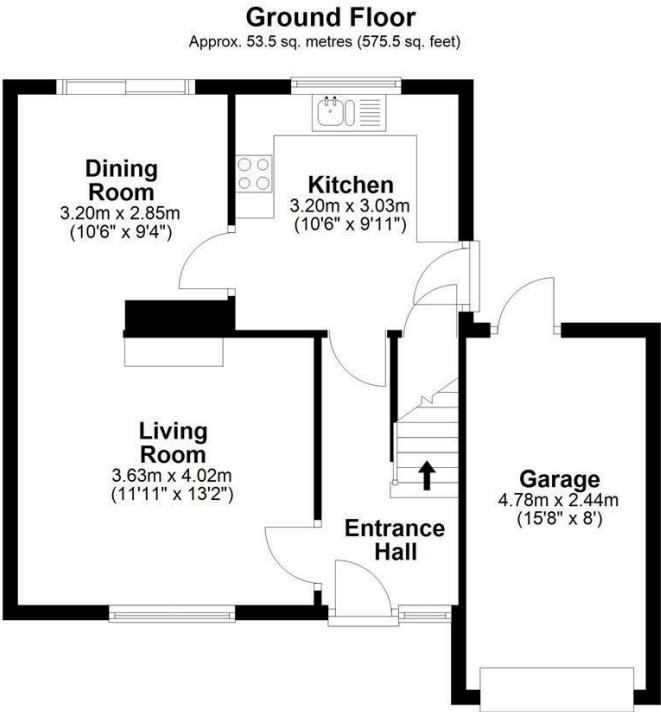




At the front, there is a lawned garden behind a hedge. The driveway provides parking and access to the garage, which also has a door to the rear. The rear garden is enclosed and mainly lawn, a good-sized patio adjoins the house, and there is a lovely, established grapevine. Beyond the main garden is an additional "secret garden", perfect for a workshop or as a vegetable garden.

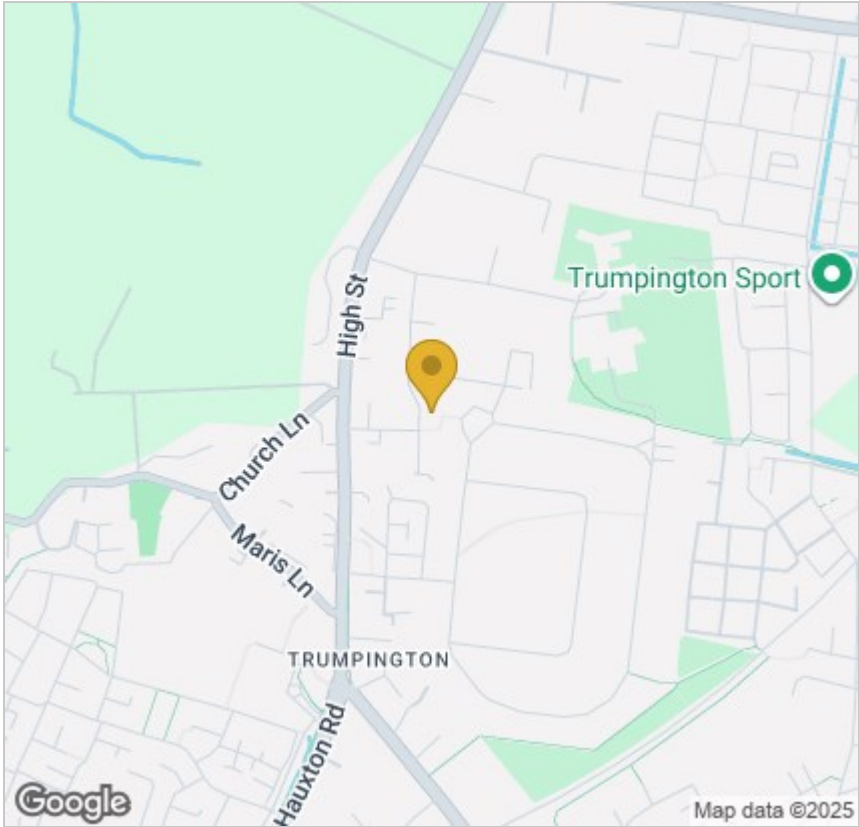
What3words: ///rapid.keys.lovely



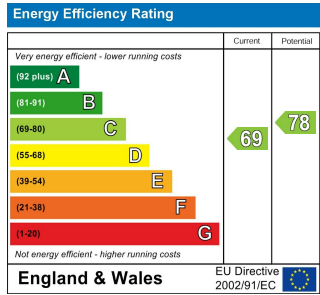


Total area: approx. 94.7 sq. metres (1019.4 sq. feet)

Drawings are for guidance only
Plan produced using PlanUp.



Energy Efficiency Graph



Tenure: Freehold
Council tax band:

These particulars, whilst believed to be accurate, are set out as a general outline only for guidance and do not constitute any part of an offer or contract. Intending purchasers should not rely on them as statements of representation of fact, but must satisfy themselves by inspection or otherwise as to their accuracy. No person in this firm's employment has the authority to make or give any representation or warranty in respect of the property.