

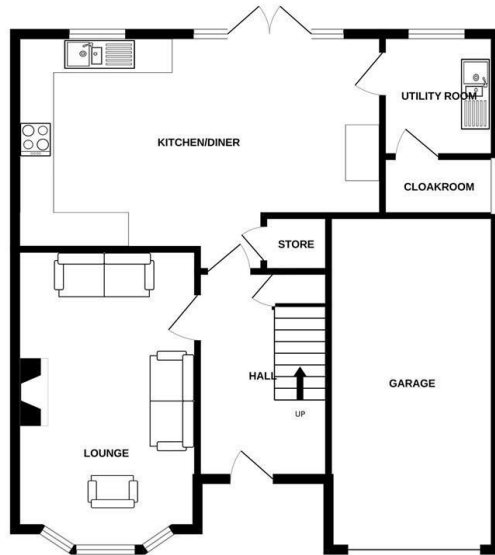


|., 19 Whitebeam Close, Congleton, Cheshire, CW12 1GH

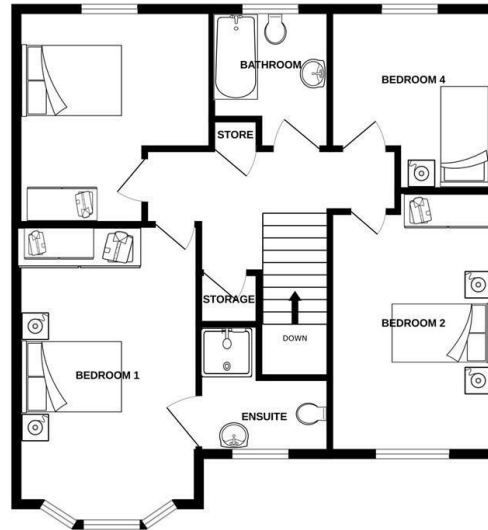
Offers In Excess Of £425,000

- Immaculately Presented Four Double Bedroom Family Home
- Master Bedroom With Modern En-Suite Shower Room And Fitted Mirrored Sliding Wardrobes.
- Ample Off Road Parking With Space For Two Cars Plus an Integrated Garage
- EPC Rating B
- Open Plan Kitchen, Dining and Family Room
- Good Sized Family Bathroom
- Highly Desirable Location Close To Local Amenities And Schools
- On Trend Kitchen With Integrated Appliances
- Delightful Landscaped Gardens
- Viewing Highly Recommended

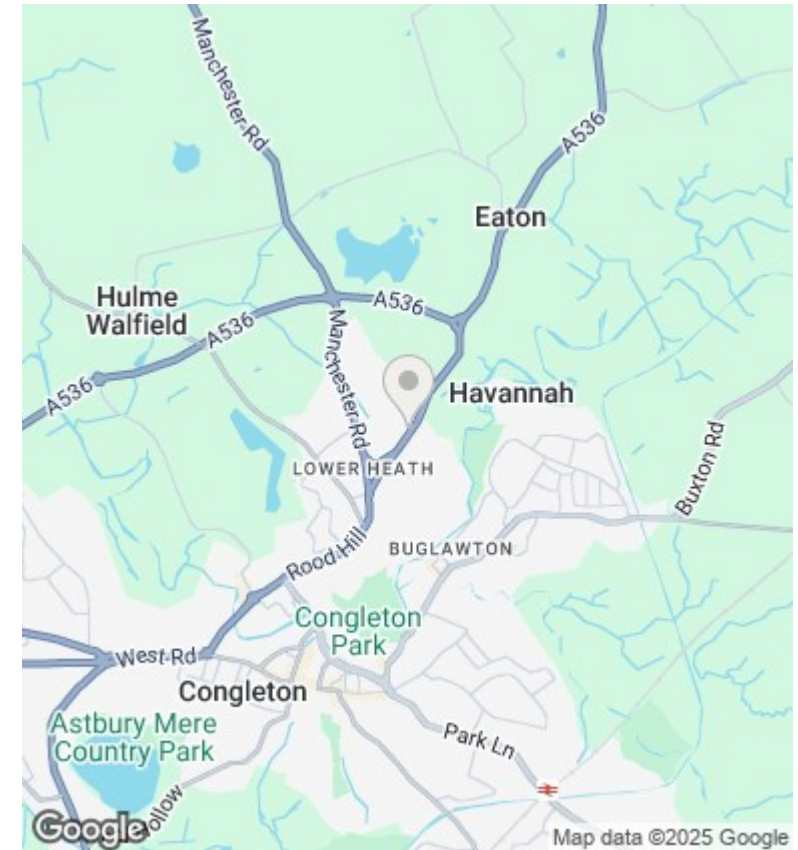
GROUND FLOOR



1ST FLOOR



Whilst every attempt has been made to ensure the accuracy of the floorplan contained here, measurements of doors, windows, rooms and any other items are approximate and no responsibility is taken for any error, omission or mis-statement. This plan is for illustrative purposes only and should be used as such by any prospective purchaser. The services, systems and appliances shown have not been tested and no guarantee as to their operability or efficiency can be given.
Made with Metropix ©2023



Directions

Viewings

Viewings by arrangement only. Call 01260 273241 to make an appointment.

Council Tax Band

E

EPC Rating:

Energy Efficiency Rating		
	Current	Potential
Very energy efficient - lower running costs		
(92 plus) A		
(81-91) B		
(69-80) C		
(55-68) D		
(39-54) E		
(21-38) F		
(1-20) G		
Not energy efficient - higher running costs		
England & Wales	EU Directive 2002/91/EC	