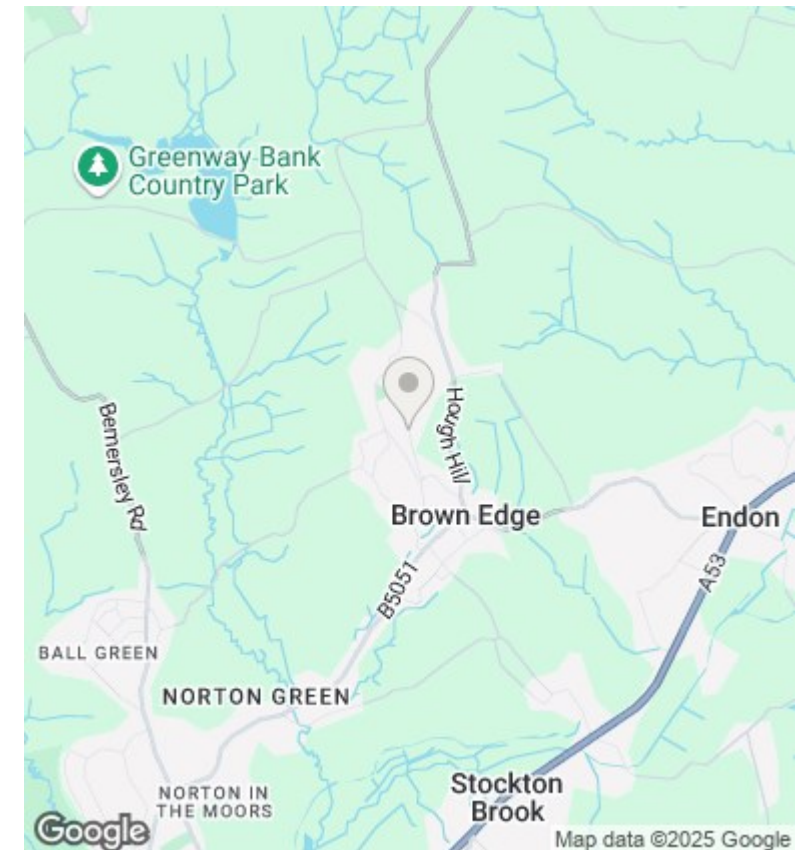
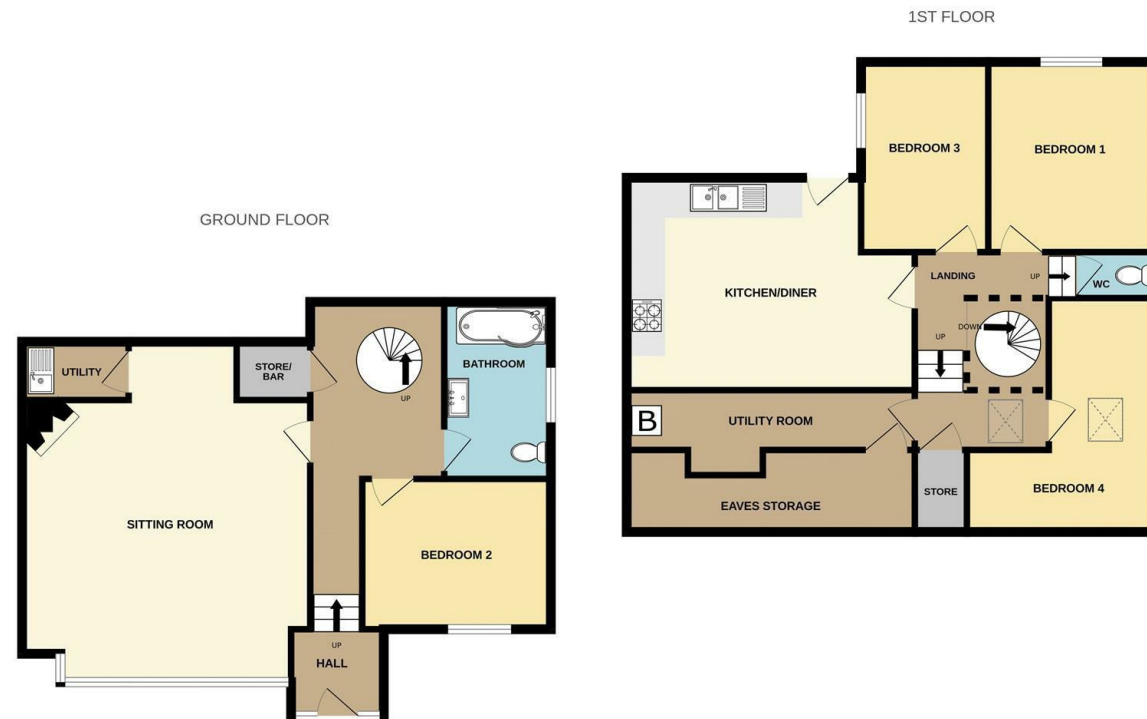


Tawney Heights St. Annes Vale, Brown Edge, Stoke-On-Trent, Offers In The Region Of £400,000

- Detached property
- Tiered garden
- Galleried landing
- 4 bedrooms
- Garage and drive
- Unique design
- Spiral staircase



Directions

From our Derby Street, Leek, offices proceed along Haywood Street, continue over the traffic lights into Broad Street. Upon reaching the mini roundabout adjacent to Morrison's supermarket continue straight ahead on to the A53 Newcastle Road, follow this road out of the town passing through the village of Longsdon and upon entering the village of Endon, just after passing the Plough Inn public house take the third right into Clay

Viewings

Viewings by arrangement only. Call 01538 372006 to make an appointment.

Council Tax Band

D

EPC Rating:

Energy Efficiency Rating		
	Current	Potential
Very energy efficient - lower running costs		
(92 plus) A		
(81-91) B		
(69-80) C		
(55-68) D		
(39-54) E		
(21-38) F		
(1-20) G		
Not energy efficient - higher running costs		
England & Wales	EU Directive 2002/91/EC	