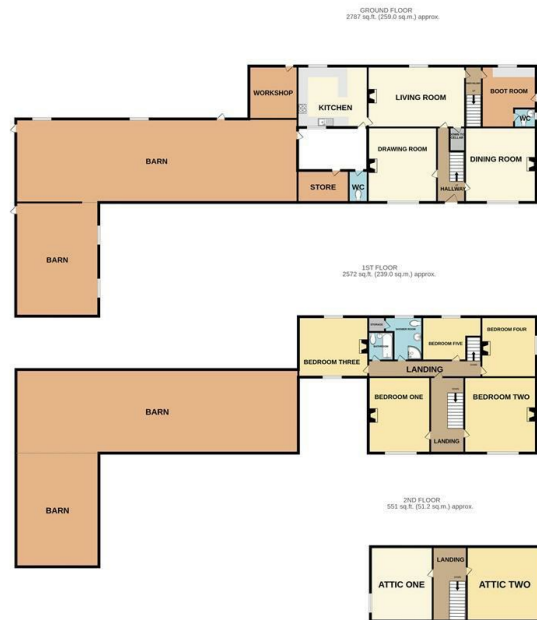




Wolf Dale Rushton Spencer, Macclesfield, Cheshire, SK11

Asking Price £650,000

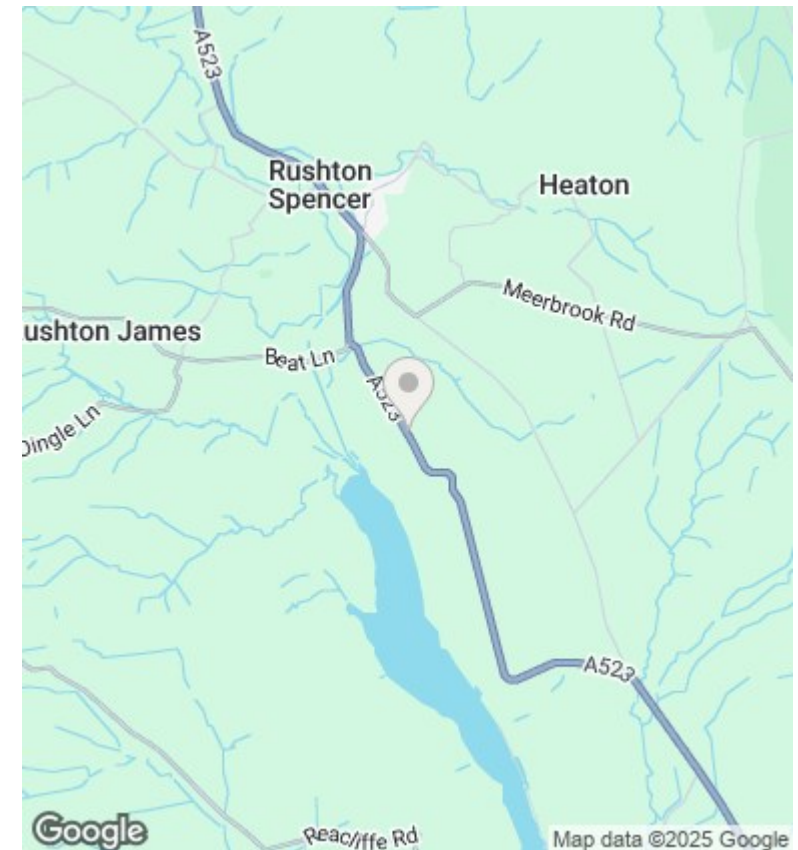
- An exquisite period farmhouse, gardens, stone barns and yard areas extending to approximately 1.42 acres.
- Traditional Grade II Listed 18th Century, 5 bedroom farmhouse of great character.
- Two substantial lofted stone barns with potential for residential/holiday let or office conversion (subject to planning)
- Excellent range of purpose built stone garages.
- Well equipped workshop
- Outstanding valley views towards Rudyard Reservoir
- Viewing Highly Recommended



TOTAL FLOOR AREA : 5911 sq.ft. (549.1 sq.m.) approx.

Whilst every attempt has been made to ensure the accuracy of the floorplan contained here, measurements of doors, windows, rooms and any other items are approximate and no responsibility is taken for any error, omission or mis-statement. This plan is for illustrative purposes only and should be used as such by any prospective purchaser. The services, systems and appliances shown have not been tested and no guarantee as to their operability or efficiency can be given.

Made with Metropix ©2025



Directions

Viewings

Viewings by arrangement only. Call 01538 372006 to make an appointment.

Council Tax Band

F

EPC Rating:

Energy Efficiency Rating		
	Current	Potential
Very energy efficient - lower running costs		
(92 plus) A		
(81-91) B		
(69-80) C		
(55-68) D		
(39-54) E		
(21-38) F		
(1-20) G		
Not energy efficient - higher running costs		
England & Wales	EU Directive 2002/91/EC	