

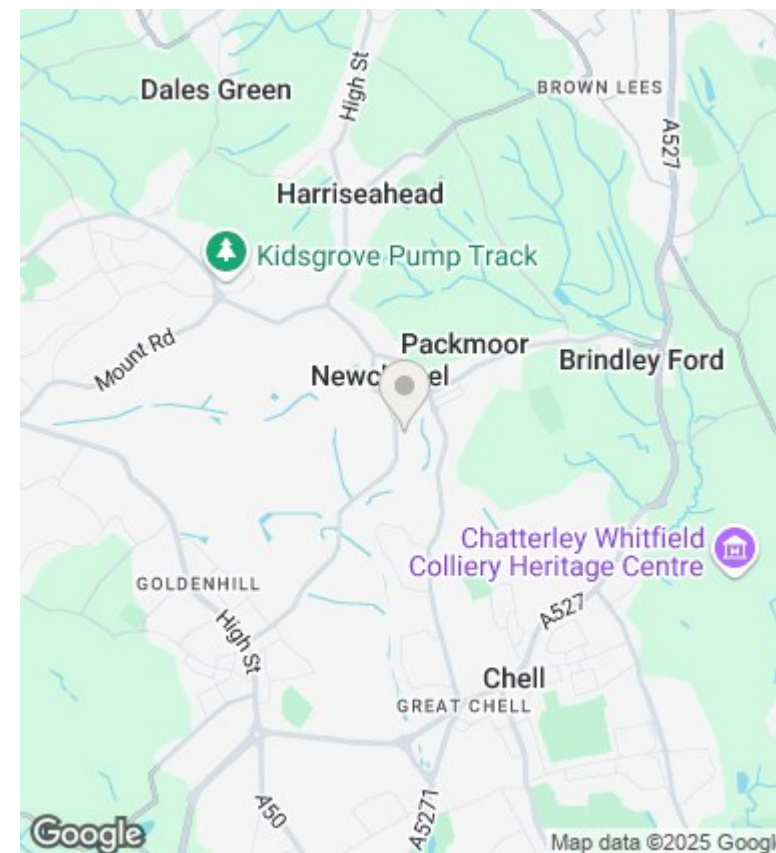
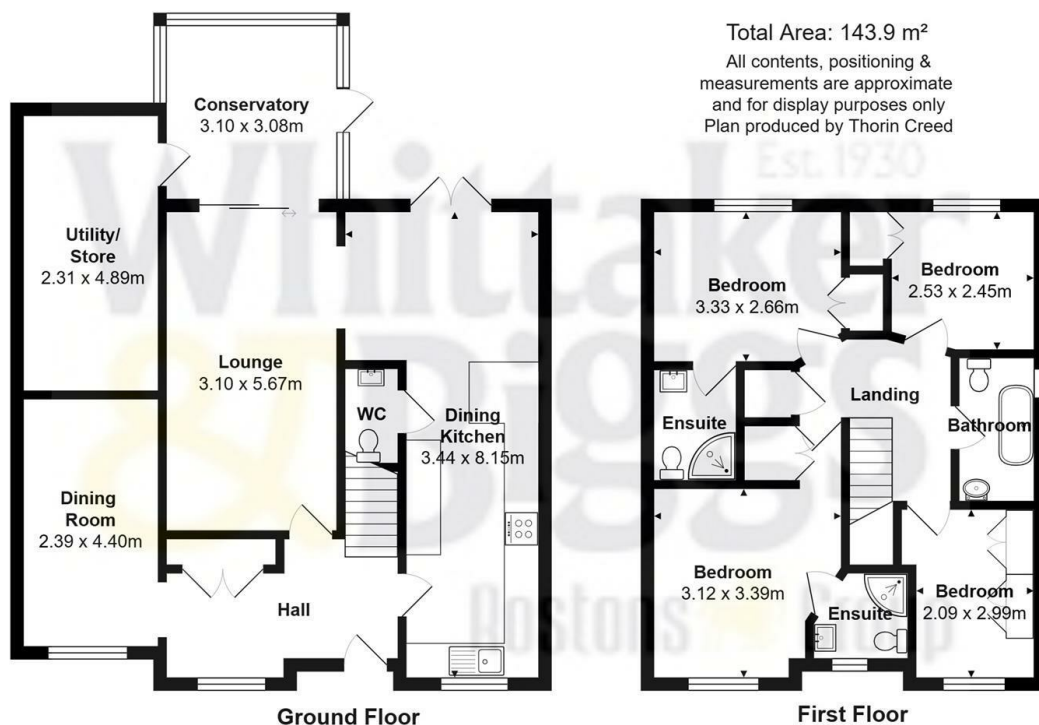


## 17 Redwing Grove, Packmoor, ST7 4GE

Asking Price £369,950

- Upgraded Four-Bedroom Detached Family Home Offering Versatile Accommodation
- High-Spec Open-Plan Kitchen/Diner With Garden Access
- Stunning Landscaped Rear Garden With Elevated Patio, Lawns And Covered Garden Seating Area
- Extended Entrance Hall, Plus Upgraded External Covered Oak Porch
- Conservatory Providing Additional Accommodation
- Cul-De-Sac Location Ideal For Families
- Stunning Open-Plan Living, Two Spacious Reception Rooms
- Two En-Suite Shower Rooms Plus A Luxurious Family Bathroom With Roll Top Bath





## Directions

## Viewings

Viewings by arrangement only. Call 01782 522117 to make an appointment.

## Council Tax Band

D

## EPC Rating:

C

Energy Efficiency Rating		
	Current	Potential
Very energy efficient - lower running costs		
(92-plus) <b>A</b>		
(81-91) <b>B</b>		
(69-80) <b>C</b>	70	80
(55-68) <b>D</b>		
(39-54) <b>E</b>		
(21-38) <b>F</b>		
(1-20) <b>G</b>		
Not energy efficient - higher running costs		
<b>England &amp; Wales</b>	EU Directive 2002/91/EC	