

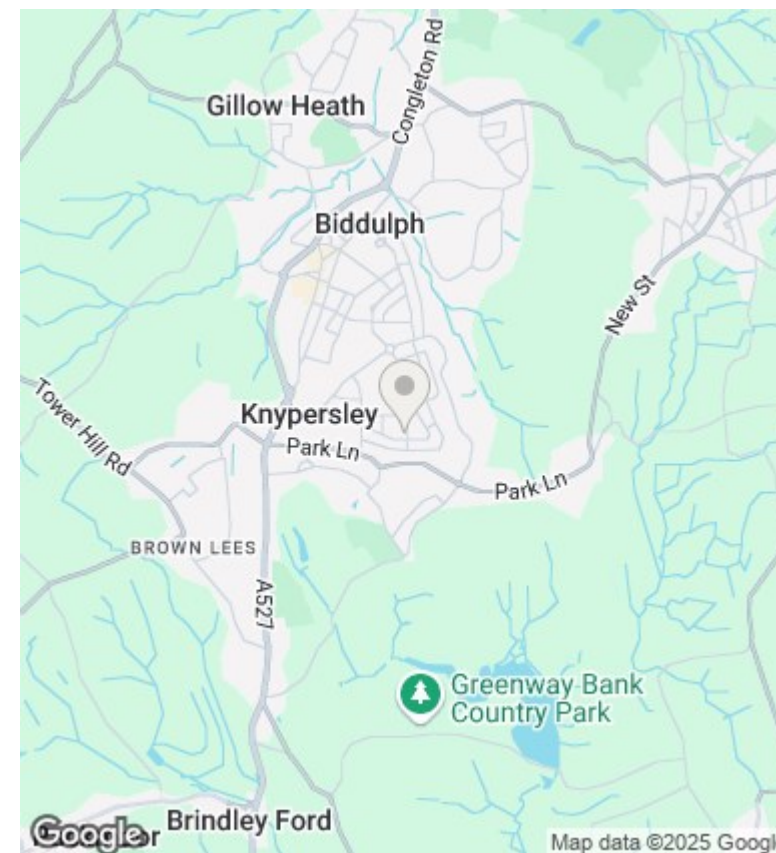
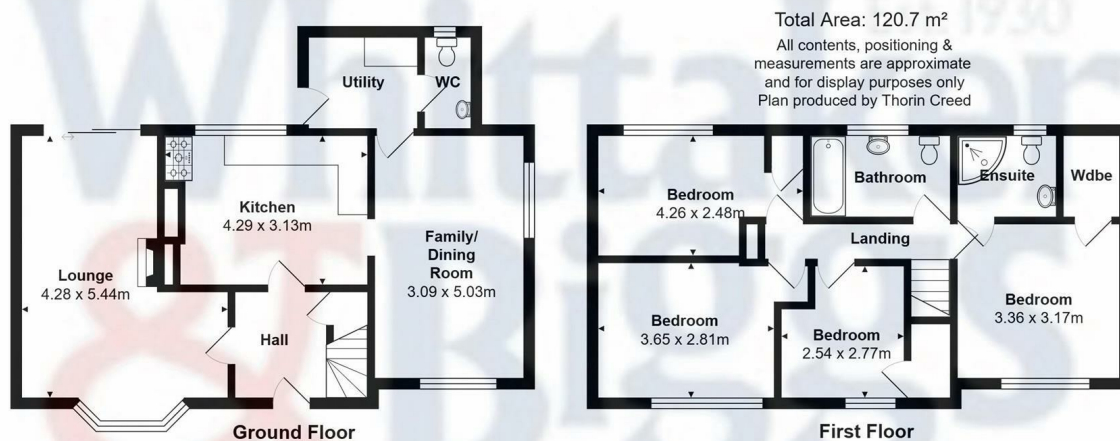


## 27 Church Road, Biddulph, Stoke-On-Trent, Staffordshire, ST8

Asking Price £224,950

- Extended Four Bedroom Home
- Fully Enclosed Lawned Garden
- Suitable For Large Families
- Versatile Accommodation
- Two Reception Rooms
- Situated On A Spacious Corner Plot
- Located Close to Church Road Recreational Grounds
- Spacious Kitchen With Separate Utility
- Off-Road Parking Secured By Double Metal Gates
- Affordable Family Home





## Directions

## Viewings

Viewings by arrangement only. Call 01782 522117 to make an appointment.

## Council Tax Band

A

## EPC Rating:

Energy Efficiency Rating		
	Current	Potential
Very energy efficient - lower running costs		
(92 plus) <b>A</b>		
(81-91) <b>B</b>		
(69-80) <b>C</b>		
(55-68) <b>D</b>		
(39-54) <b>E</b>		
(21-38) <b>F</b>		
(1-20) <b>G</b>		
Not energy efficient - higher running costs		
<b>England &amp; Wales</b>	EU Directive 2002/91/EC	