



Cardonnel Road
, Neath, SA10 6DE

£135,000



3



1



2



D

Cardonnel Road

, Neath, SA10 6DE

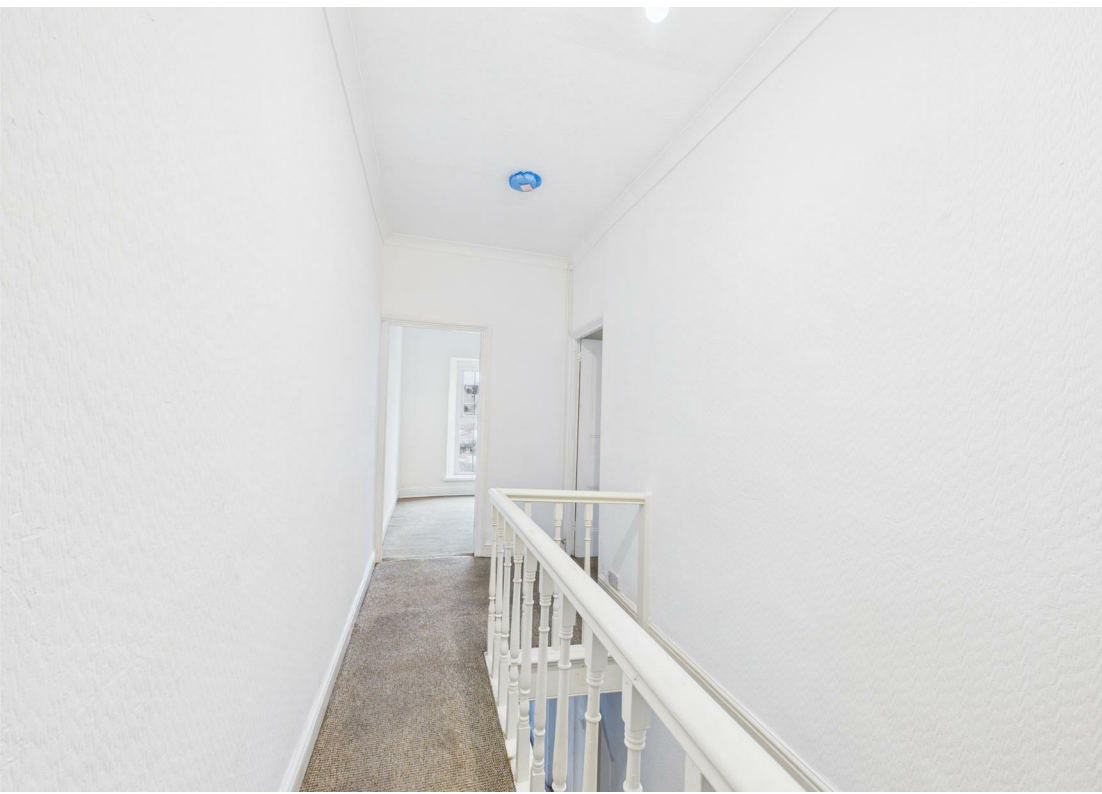
Located on Cardonnel Road in Neath, this delightful terraced house presents an excellent opportunity for first-time buyers seeking a comfortable and inviting home. The property includes three bedrooms, providing ample space for family living or accommodating guests.

Upon entering, you are greeted by two reception rooms, perfect for entertaining or relaxing. These versatile spaces can be tailored to suit your lifestyle, whether you envision a cosy sitting room or a vibrant dining area.

One of the standout features of this property is the large garden. This outdoor space is ideal for families, pets, or anyone who appreciates the beauty of nature.

With its appealing layout and potential for personalisation, this terraced house on Cardonnel Road is a wonderful choice for those looking to establish their first home in a friendly neighbourhood. Don't miss the chance to make this property your own.





Floor Plan



Viewing

Please contact our McHattons - Neath Office on 01639 501766 if you wish to arrange a viewing appointment for this property or require further information.

These particulars, whilst believed to be accurate are set out as a general outline only for guidance and do not constitute any part of an offer or contract. Intending purchasers should not rely on them as statements of representation of fact, but must satisfy themselves by inspection or otherwise as to their accuracy. No person in this firms employment has the authority to make or give any representation or warranty in respect of the property.

40 Alfred Street, Neath, SA11 1EH
Tel: 01639 501766 Email: neath@mchattons.co.uk

Area Map



Energy Efficiency Graph

