



4 Bedroom  
Detached House  
in Brinkworth

£2,400 PCM

The Old Police House  
The Street  
Brinkworth  
SN15 5AA



Victoria Allman  
lettings



- Stunning detached period home
- Flexible family sized accommodation
- Beautifully presented throughout
- 4 bedrooms, 3 bathrooms
- 2 large reception rooms & home office
- Light-filled kitchen / breakfast room
- Gated private parking & garage
- Garden backing onto open fields
- Council tax band G - £4,072 pa



4



3



3



EPC  
exempt

## SUMMARY

The Old Police House is a stunning, four bedroom home in the village of Brinkworth, located between the popular market towns of Malmesbury and Royal Wootton Bassett. Backing onto fields with far-reaching countryside views, this pretty double-fronted detached period property is spacious, light and recently redecorated to a high standard.

This is an ideal family home available on a 6-month let from early November.



## DESCRIPTION

The Old Police House is located just a short walk from the pub and primary school in the heart of Brinkworth. On the ground floor, there is a spacious dual-aspect living room with a wood-burner and double doors opening out onto the rear garden. Across the entrance hall, there is a further good-size reception room also featuring a fireplace. The extended kitchen - fitted with shaker-style units and granite work surfaces - is open plan with a breakfast area and uninterrupted views over the garden and adjoining field. A home office is located to the side benefitting from a separate entrance, whilst to the rear there is a useful utility room and WC. There is underfloor heating in the study, kitchen and principal bedroom.

On the first floor there are four good-sized bedrooms arranged around a spacious landing. The principal bedroom has fitted wardrobes across one wall and a modern en-suite shower room. The family bathroom is fitted with a separate shower and jacuzzi bath.

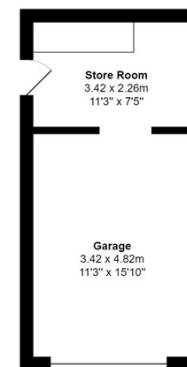
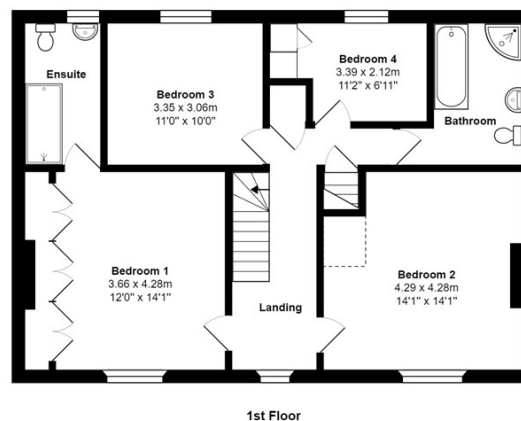
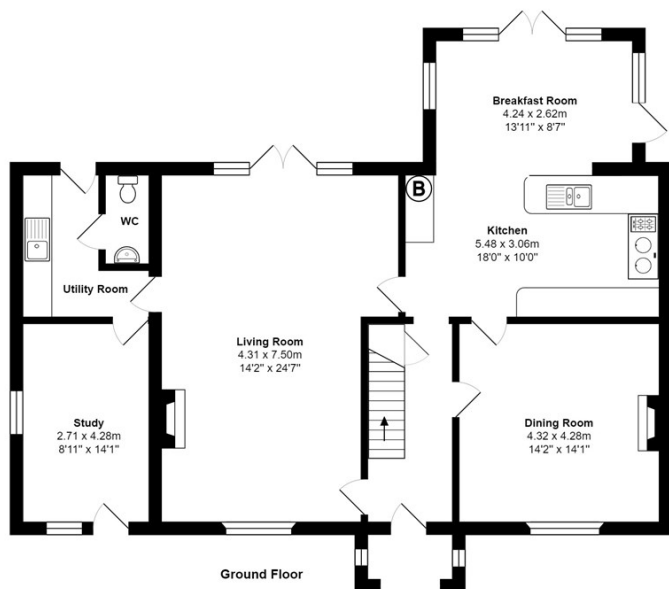
The property is set behind high hedging screening the road and double five-bar electric timber gates. There is gravelled parking for numerous vehicles and a detached garage which has an adjoining workshop at the rear. The garden is laid mostly to lawn with timber fencing partitioning the field which provides a lovely outlook and feeling of borrowed open space. There is a patio terrace landscaped to join the rear of the property.

## SITUATION

Reputed to be the 'longest village in England', Brinkworth has an excellent primary school and public house as well as parish church and village hall. A village market takes place every two weeks, and the local dairy delivers milk on a weekly basis along with its cheese, cream and other produce. Brinkworth has a strong community spirit with many village events and activities throughout the year. Nearby Malmesbury and Royal Wootton Bassett provide a wide range of shops and amenities as well as excellent options for schools.

The house is conveniently located for both Junction 16 (6 miles) and Junction 17 (8 miles) of the M4 giving easy commuter access to Bath, Bristol, Swindon and other regional centres. There are regular mainline services from Swindon, Kemble and Chippenham to London Paddington taking just over 60 minutes.





Total Area: 198.4 m<sup>2</sup> ... 2136 ft<sup>2</sup> (excluding garage, store room)

All measurements are approximate and for display purposes only

## DIRECTIONS

From Malmesbury, follow the B4042 to Brinkworth village. Enter the village continuing along the road and locate the property on the left hand side just after St Michaels Close and before the turning into School Hill opposite.

Postcode: SN15 5AA

What3Words:

///unwanted.surprises.maps

## CONTACT

lettings@victoriaallman.co.uk

01666 338866

[www.victoriaallman.co.uk](http://www.victoriaallman.co.uk)



**Victoria Allman**  
lettings