



1 Bedroom
Apartment
located in the centre
of Tetbury

£895 PCM

Flat 3, Grosvenor House
9 Market Place
Tetbury
GL8 8DA



Victoria Allman
lettings

- Character apartment in Grade II listed townhouse in the heart of Tetbury
- Spacious living room with views over Market Place
- Stylish double bedroom with exposed beams
- Recently refurbished throughout
- Council Tax Band B £1,817 pa
- EPC Rating E



1



1



1



E

SUMMARY

Situated within the heart of the sought after Cotswold market town of Tetbury, this beautifully presented and characterful one bedroom apartment is within easy walking distance to all of the towns amenities and has a pleasant view over the Market Place. This is an ideal Cotswold base within this thriving town.

The well presented property extends to around 634 sq ft, on the third floor of a Grade II listed building which houses three properties. To the front of the apartment is a spacious living / dining room area with views over the Market Place. Off the living room is a well-designed kitchen with modern units and integrated appliances. A beautiful double bedroom with exposed beams is at the back of the apartment, and in between a stylish bathroom.

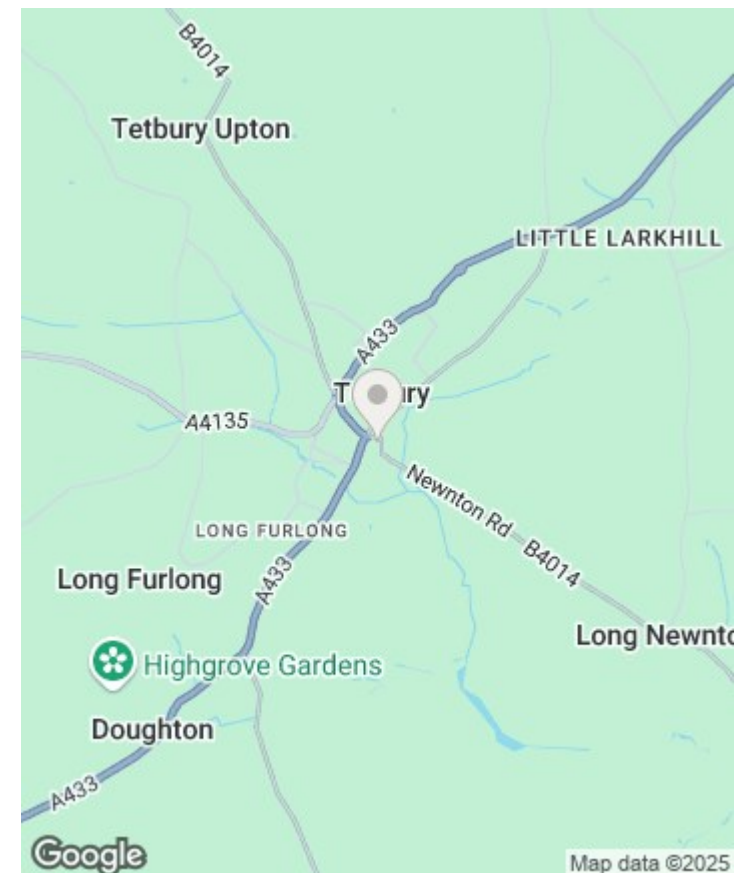
Whilst the property has no parking, there are ample opportunities in and around the centre of Tetbury, many of which are unrestricted on time.

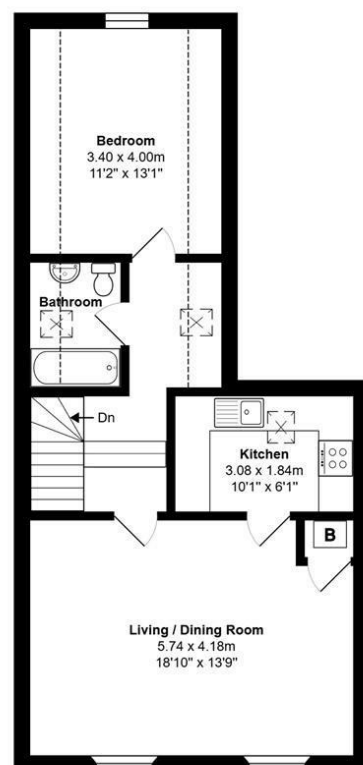
LOCATION

Tetbury is a thriving historic Cotswold market town with much of it dating back to the 17th and 18th Centuries. The town has a broad range of shops and amenities for everyday needs including a large supermarket, community hospital, surgeries and post office whilst there are highly regarded schools catering for all ages. Tetbury has a number of excellent independent boutiques, hotels, cafes and restaurants, as well as nearby Waitrose stores in Malmesbury and Cirencester.

Voted by Country Life magazine recently as the third most desirable town in the country, Tetbury is situated within an Area of Outstanding Natural Beauty and is surrounded by delightful Cotswold Countryside. Close by is the beautiful Forest Commission run Westonbirt Arboretum and King Charles' Highgrove Estate.

Conveniently located less than half an hour from both the M4 and M5 motorway, Tetbury is within easy reach of Cirencester, Cheltenham, Bath, Bristol and Swindon. There is good access to nearby Kemble Railway Station which provides regular fast services to London and other regional centres.





Total Area: 58.9 m² ... 634 ft²
 All measurements are approximate and for display purposes only

DIRECTIONS

In the centre of Tetbury, the property is located on Market Place, opposite the Gumstool Hill car park.


Postcode GL8 8DA
 What3Words
 ///calms.comply.taken

CONTACT

lettings@victoriaallman.co.uk
 01666 338866

www.victoriaallman.co.uk



Energy Efficiency Rating		
	Current	Potential
Very energy efficient - lower running costs		
(92 plus) A		
(81-91) B		
(69-80) C		
(55-68) D		
(39-54) E		
(21-38) F		
(1-20) G		
Not energy efficient - higher running costs		
England & Wales	43	60
	EU Directive 2002/91/EC 	



Victoria Allman
 lettings