



Commercial
Retail Unit
located in Tetbury

£1,900 PCM

4 Long Street
Tetbury
GL8 8AQ



Victoria Allman
lettings

- Commercial retail unit in the heart of Tetbury
- Prime position on highly sought after Long Street, next to Mayfair & Grace and The Highgrove Shop
- 837 sq ft total space, including 554 sq ft flexible retail space
- Private kitchen/staffroom and toilet facilities
- Long term lease
- EPC Rating D
- Business rates and charges may apply

SUMMARY

Situated in the heart of the vibrant Cotswold market town of Tetbury, this commercial property presents an exceptional opportunity for those seeking a prime retail space.

Spanning an impressive 857 sq feet, the property features a well-appointed, flexible retail unit of 554 sq ft, ideally positioned on the bustling Long Street, known for its charming shops and local amenities.

The retail space is designed to cater to a variety of business needs, providing a welcoming environment for customers. Additionally, the property boasts its own private kitchen and staffroom, along with essential toilet facilities, ensuring convenience for both staff and patrons alike.

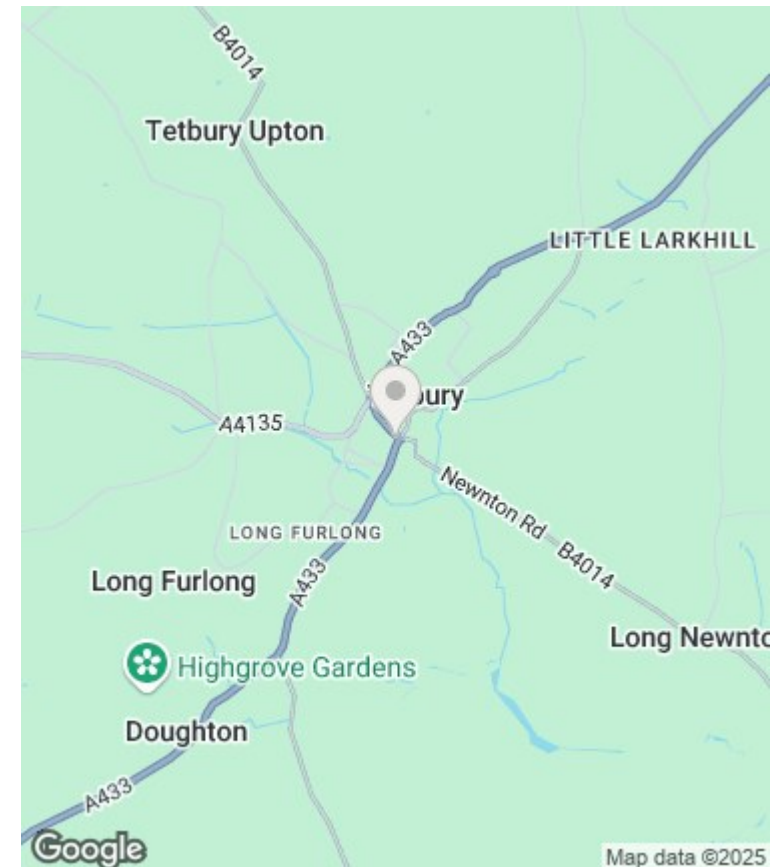
This property is offered on a long-term lease of 10 years, with the added flexibility of a 5-year break clause, making it an attractive option for businesses looking to establish themselves in this sought-after location.

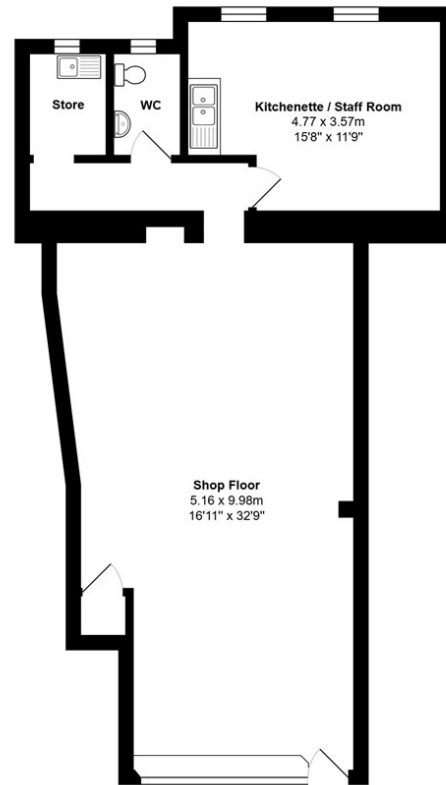
LOCATION

Tetbury is a thriving historic Cotswold market town with much of it dating back to the 17th and 18th Centuries. The town has a broad range of shops and amenities for everyday needs as well as a number of excellent shops, hotels, restaurants and cafes. Further everyday needs include a large supermarket, hospital, surgeries and post office whilst there are also excellent schools catering for all ages. There are nearby Waitrose stores at Malmesbury and Cirencester.

Voted by Country Life magazine recently as the third most desirable town in the country, Tetbury is situated within an Area of Outstanding Natural Beauty and is surrounded by delightful Cotswold countryside. Westonbirt Arboretum and King Charles' Highgrove Estate is close by.

Conveniently located less than half an hour from both the M4 and M5 motorway, Tetbury is within easy reach of Cirencester, Cheltenham, Bath, Bristol and Swindon. There is good access to nearby Kemble Railway Station which provides regular fast services to London and other regional centres.





Total Area: 79.6 m² ... 857 ft²

All measurements are approximate and for display purposes only



DIRECTIONS

In the centre of Tetbury, the property is located just 25m from the roundabout, on the left hand side next to Mayfair & Grace. Sat Nav postcode GL8 8AQ.
w3w.co/kickbacks.fruit.growth

CONTACT

lettings@victoriaallman.co.uk
 01666 338866

www.victoriaallman.co.uk



Victoria Allman
 lettings