

An aerial photograph of a tropical beach. The top half of the image shows a light-colored sandy beach with several palm trees. Their long, dark shadows are cast across the sand. The bottom half of the image shows clear, turquoise water. The text 'CALA' is centered between the beach and the water.

# CALA

SAHL HASHEESH

*Phase 1*





*Discover a world of tranquillity  
and luxury at CALA*



# Building Types

- Type A
- Type A1
- Type B
- Type B1
- Type C
- Type C1
- Type E
- Type E1
- Type Em
- Type E1m
- Type F
- Type G
- Type H
- Type Gm
- Club House





## *Unit Offering*

Our homes are designed to exceed expectations, offering a seamless transition into luxurious living. Each unit comes complete with meticulously installed kitchen cabinets, wardrobes, and air conditioners, ensuring every detail is taken care of. Additionally, each unit boasts a stunning view from the terrace, providing a perfect spot to relax and enjoy the surroundings. Moreover, enjoy added peace of mind with a comprehensive security CCTV system and access to Triple Play Communication services. Plus, with dedicated parking spots, convenience is always at your doorstep.

Experience the epitome of modern living with The CALA fully equipped homes.



# *Type A - Summary*

## **No. of floors : 3**

- Ground Floor
- First Floor
- second Floor

## **No. of units: 4 per floor**

## **Unit type: two bedroom**

## **Unit area: 112 m<sup>2</sup> to 116 m<sup>2</sup>**

## **Penthouse area: 121 m<sup>2</sup> to 125 m<sup>2</sup>**



**Building Location**

## **DISCLAIMER**

All render and visual materials are for illustrative purpose only. actual areas may vary from the stated figures. All dimensions are measured to structural elements. Capital Link reserved the right to make minor modifications without prior notice. Unit floor plan might be mirrored according to its location in the layout.





# *Type A - Ground floor*

## **Unit G1 - Two bedroom**

**Area**            **115.6 m<sup>2</sup>**

**Garden**        **18.3 m<sup>2</sup>**

## **Unit G2 - Two bedroom**

**Area**            **112.7 m<sup>2</sup>**

**Garden**        **39 m<sup>2</sup>**

## **Unit G3 - Two bedroom**

**Area**            **112.8 m<sup>2</sup>**

**Garden**        **39 m<sup>2</sup>**

## **Unit G4 - Two bedroom**

**Area**            **112.2 m<sup>2</sup>**

**Garden**        **20.9 m<sup>2</sup>**

### **DISCLAIMER**

All render and visual materials are for illustrative purpose only. actual areas may vary from the stated figures. All dimensions are measured to structural elements. Capital Link reserved the right to make minor modifications without prior notice. Unit floor plan might be mirrored according to its location in the layout.





# *Type A - First floor*

## **Unit F1 - Two bedroom**

**Area**            **115.6 m<sup>2</sup>**

## **Unit F2 - Two bedroom**

**Area**            **115.6 m<sup>2</sup>**

## **Unit F3 - Two bedroom**

**Area**            **115.7 m<sup>2</sup>**

## **Unit F4 - Two bedroom**

**Area**            **112.2 m<sup>2</sup>**

### **DISCLAIMER**

All render and visual materials are for illustrative purpose only. actual areas may vary from the stated figures. All dimensions are measured to structural elements. Capital Link reserved the right to make minor modifications without prior notice. Unit floor plan might be mirrored according to its location in the layout.





# *Type A - Second floor*

## **Unit P1 - Two bedroom**

**Area**            **121.7 m<sup>2</sup>**

**Roof Terrace**   **51.6 m<sup>2</sup>**

## **Unit P2 - Two bedroom**

**Area**            **125.6 m<sup>2</sup>**

**Roof Terrace**   **70.3 m<sup>2</sup>**

## **Unit S3 - Two bedroom**

**Area**            **113 m<sup>2</sup>**

## **Unit P4 - Two bedroom**

**Area**            **121.8 m<sup>2</sup>**

**Roof Terrace**   **81.9 m<sup>2</sup>**

### **DISCLAIMER**

All render and visual materials are for illustrative purpose only. actual areas may vary from the stated figures. All dimensions are measured to structural elements. Capital Link reserved the right to make minor modifications without prior notice. Unit floor plan might be mirrored according to its location in the layout.



# *Type A - Roof floor*

## **DISCLAIMER**

All render and visual materials are for illustrative purpose only. actual areas may vary from the stated figures. All dimensions are measured to structural elements. Capital Link reserved the right to make minor modifications without prior notice. Unit floor plan might be mirrored according to its location in the layout.





# *Type A1 - Summary*

## **No. of floors : 4**

- Garden Floor
- Entrance Floor
- First Floor
- second Floor

## **No. of units: 4 per floor**

## **Unit type: two bedroom**

## **Unit area: 112 m<sup>2</sup> to 123 m<sup>2</sup>**

## **Penthouse area: 121 m<sup>2</sup> to 126 m<sup>2</sup>**



**Building Location**

## **DISCLAIMER**

All render and visual materials are for illustrative purpose only, actual areas may vary from the stated figures. All dimensions are measured to structural elements. Capital Link reserved the right to make minor modifications without prior notice. Unit floor plan might be mirrored according to its location in the layout.





# *Type A1 - Garden floor*

## **Unit GA1 - Two bedroom**

**Area** 115.6 m<sup>2</sup>

**Garden** 19.1 m<sup>2</sup>

**English Court** 21.6 m<sup>2</sup>

## **Unit GA2 - Two bedroom**

**Area** 112.7 m<sup>2</sup>

**Garden** 40.8 m<sup>2</sup>

## **Unit GA3 - Two bedroom**

**Area** 112.8 m<sup>2</sup>

**Garden** 41.0 m<sup>2</sup>

## **Unit GA4 - Two bedroom**

**Area** 112.1 m<sup>2</sup>

**Garden** 21.5 m<sup>2</sup>

**English Court** 21.6 m<sup>2</sup>

### **DISCLAIMER**

All render and visual materials are for illustrative purpose only. actual areas may vary from the stated figures. All dimensions are measured to structural elements. Capital Link reserved the right to make minor modifications without prior notice. Unit floor plan might be mirrored according to its location in the layout.



# *Type A1 - Entrance floor*

## **Unit E1 - Two bedroom**

**Area**            **115.6 m<sup>2</sup>**

## **Unit E2 - Two bedroom**

**Area**            **117.8 m<sup>2</sup>**

## **Unit E3 - Two bedroom**

**Area**            **118.2 m<sup>2</sup>**

## **Unit E4 - Two bedroom**

**Area**            **119.6 m<sup>2</sup>**

### **DISCLAIMER**

All render and visual materials are for illustrative purpose only. actual areas may vary from the stated figures. All dimensions are mesured to structural elements. Capital Link reserved the right to make minor modifications without prior notice. Unit floor plan might be mirrored according to its location in the layout.





# *Type A1 - First floor*

## **Unit F1 - Two bedroom**

**Area**            **115.6 m<sup>2</sup>**

## **Unit F2 - Two bedroom**

**Area**            **122.9 m<sup>2</sup>**

## **Unit F3 - Two bedroom**

**Area**            **123 m<sup>2</sup>**

## **Unit F4 - Two bedroom**

**Area**            **112.1 m<sup>2</sup>**

### **DISCLAIMER**

All render and visual materials are for illustrative purpose only. actual areas may vary from the stated figures. All dimensions are measured to structural elements. Capital Link reserved the right to make minor modifications without prior notice. Unit floor plan might be mirrored according to its location in the layout.





# *Type A1 - Second floor*

## **Unit P1 - Two bedroom**

**Area**            **121.7 m<sup>2</sup>**

**Roof Terrace**   **45.4 m<sup>2</sup>**

## **Unit P2 - Two bedroom**

**Area**            **125.5 m<sup>2</sup>**

**Roof Terrace**   **70.3 m<sup>2</sup>**

## **Unit S3 - Two bedroom**

**Area**            **113 m<sup>2</sup>**

## **Unit P4 - Two bedroom**

**Area**            **121.8 m<sup>2</sup>**

**Roof Terrace**   **75.7 m<sup>2</sup>**

### **DISCLAIMER**

All render and visual materials are for illustrative purpose only. actual areas may vary from the stated figures. All dimensions are measured to structural elements. Capital Link reserved the right to make minor modifications without prior notice. Unit floor plan might be mirrored according to its location in the layout.



# *Type A1 - Roof floor*

## **DISCLAIMER**

All render and visual materials are for illustrative purpose only. actual areas may vary from the stated figures. All dimensions are measured to structural elements. Capital Link reserved the right to make minor modifications without prior notice. Unit floor plan might be mirrored according to its location in the layout.





# *Type B - Summary*

## **No. of floors : 3**

- Ground Floor
- First Floor
- second Floor

## **No. of units: 5 per floor**

**Unit type: Studio & One bedroom**

**Unit area: 58 m<sup>2</sup> to 82 m<sup>2</sup>**

**Penthouse area: 84 m<sup>2</sup> to 95 m<sup>2</sup>**



**Building Location**

## **DISCLAIMER**

All render and visual materials are for illustrative purpose only. actual areas may vary from the stated figures. All dimensions are measured to structural elements. Capital Link reserved the right to make minor modifications without prior notice. Unit floor plan might be mirrored according to its location in the layout.







# *Type B - Ground floor*

## **Unit G1 - One bedroom**

**Area:** 80.87 m<sup>2</sup>

**Garden:** 19.95 m<sup>2</sup>

## **Unit G2 - One bedroom**

**Area:** 80.00 m<sup>2</sup>

**Garden:** 32.21 m<sup>2</sup>

## **Unit G3 - One bedroom**

**Area:** 81.81 m<sup>2</sup>

**Garden:** 34.81 m<sup>2</sup>

## **Unit G4 - Studio**

**Area:** 58.52 m<sup>2</sup>

**Garden:** 11.55 m<sup>2</sup>

## **Unit G5 - One bedroom**

**Area:** 81.64 m<sup>2</sup>

**Garden:** 18.93 m<sup>2</sup>

### **DISCLAIMER**

All render and visual materials are for illustrative purpose only. actual areas may vary from the stated figures. All dimensions are measured to structural elements. Capital Link reserved the right to make minor modifications without prior notice. Unit floor plan might be mirrored according to its location in the layout.



# *Type B - First floor*

## **Unit F1 - One bedroom**

**Area: 80.87 m<sup>2</sup>**

## **Unit F2 - One bedroom**

**Area: 80.00 m<sup>2</sup>**

## **Unit F3 - One bedroom**

**Area: 81.81 m<sup>2</sup>**

## **Unit F4 - Studio**

**Area: 58.52 m<sup>2</sup>**

## **Unit F5 - One bedroom**

**Area: 81.64 m<sup>2</sup>.**

### **DISCLAIMER**

All render and visual materials are for illustrative purpose only. actual areas may vary from the stated figures. All dimensions are mesured to structural elements. Capital Link reserved the right to make minor modifications without prior notice. Unit floor plan might be mirrored according to its location in the layout.





# *Type B - Second floor*

## **Unit P1 - One bedroom**

**Area:** 83.90 m<sup>2</sup>.

**Roof:** 66.66 m<sup>2</sup>.

## **Unit S2 - One bedroom**

**Area:** 80.70 m<sup>2</sup>.

## **Unit P3 - One bedroom**

**Area:** 94.68 m<sup>2</sup>.

**Roof:** 47.51 m<sup>2</sup>.

## **Unit S4 - Studio**

**Area:** 53.50 m<sup>2</sup>.

## **Unit P5 - One bedroom**

**Area:** 89.50 m<sup>2</sup>.

**Roof:** 57.81 m<sup>2</sup>.

### **DISCLAIMER**

All render and visual materials are for illustrative purpose only. actual areas may vary from the stated figures. All dimensions are mesured to structural elements. Capital Link reserved the right to make minor modifications without prior notice. Unit floor plan might be mirrored according to its location in the layout.

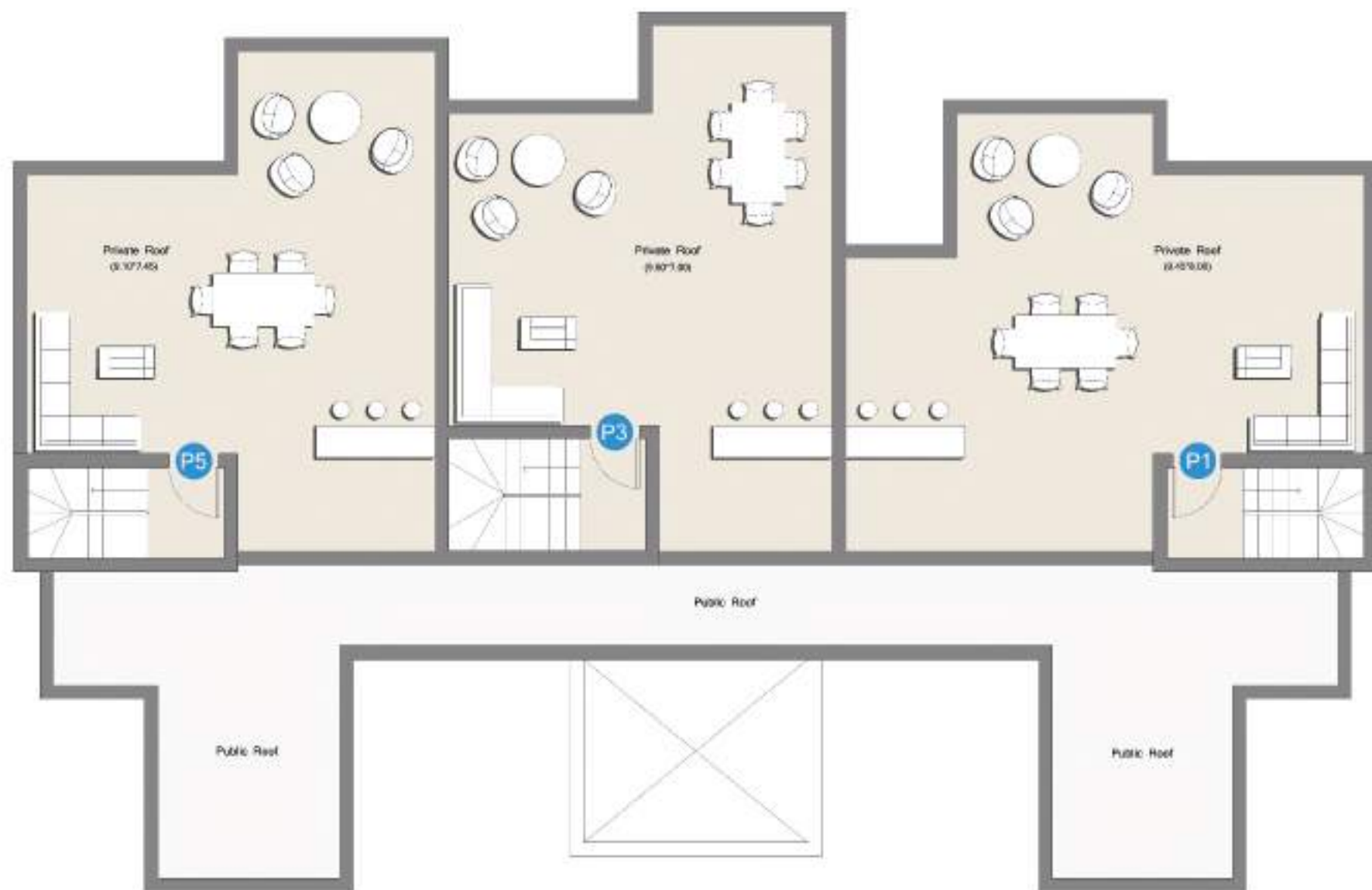




# *Type B - Roof floor*

## **DISCLAIMER**

All render and visual materials are for illustrative purpose only. actual areas may vary from the stated figures. All dimensions are measured to structural elements. Capital Link reserved the right to make minor modifications without prior notice. Unit floor plan might be mirrored according to its location in the layout.



# *Type B1 - Summary*

## **No. of floors : 4**

- Garden Floor
- Entrance Floor
- First Floor
- second Floor

## **No. of units: 5 per floor**

**Unit type: Studio & One bedroom**

**Unit area: 55 m<sup>2</sup> to 98 m<sup>2</sup>**

**Penthouse area: 85 m<sup>2</sup> to 95 m<sup>2</sup>**



**Building Location**

## **DISCLAIMER**

All render and visual materials are for illustrative purpose only, actual areas may vary from the stated figures. All dimensions are measured to structural elements. Capital Link reserved the right to make minor modifications without prior notice. Unit floor plan might be mirrored according to its location in the layout.





# *Type B1 - Garden floor*

## **Unit GA1 - One bedroom**

**Area:** 84.70m<sup>2</sup>.

**Garden:** 18.01 m<sup>2</sup>.

**English Court:** 7.6 m<sup>2</sup>.

## **Unit GA2 - One bedroom**

**Area:** 80.00 m<sup>2</sup>.

**Garden:** 33.50 m<sup>2</sup>.

## **Unit GA3 - One bedroom**

**Area:** 97.70 m<sup>2</sup>.

**Garden:** 24.72 m<sup>2</sup>.

## **Unit GA4 - Studio**

**Area:** 55.83 m<sup>2</sup>.

**Garden:** 14.44 m<sup>2</sup>.

## **Unit GA5 - One bedroom**

**Area:** 78.26 m<sup>2</sup>.

**Garden:** 22.72 m<sup>2</sup>.

**English Court:** 7.6 m<sup>2</sup>.

### **DISCLAIMER**

All render and visual materials are for illustrative purpose only. actual areas may vary from the stated figures. All dimensions are measured to structural elements. Capital Link reserved the right to make minor modifications without prior notice. Unit floor plan might be mirrored according to its location in the layout.







# *Type B1 - Entrance floor*

## **Unit E1 - One bedroom**

**Area: 84.65 m<sup>2</sup>.**

## **Unit E2 - One bedroom**

**Area: 80.00 m<sup>2</sup>.**

## **Unit E3 - One bedroom**

**Area: 97.70 m<sup>2</sup>.**

## **Unit E4 - Studio**

**Area: 55.83 m<sup>2</sup>.**

## **Unit E5 - One bedroom**

**Area: 78.26 m<sup>2</sup>.**

### **DISCLAIMER**

All render and visual materials are for illustrative purpose only. actual areas may vary from the stated figures. All dimensions are mesured to structural elements. Capital Link reserved the right to make minor modifications without prior notice. Unit floor plan might be mirrored according to its location in the layout.



# *Type B1 - First floor*

## **Unit F1 - One bedroom**

**Area: 74.59 m<sup>2</sup>.**

## **Unit F2 - One bedroom**

**Area: 82.54 m<sup>2</sup>.**

## **Unit F3 - One bedroom**

**Area: 88.13 m<sup>2</sup>.**

## **Unit F4 - Studio**

**Area: 58.39 m<sup>2</sup>**

## **Unit F5 - One bedroom**

**Area: 78.28 m<sup>2</sup>.**

### **DISCLAIMER**

All render and visual materials are for illustrative purpose only. actual areas may vary from the stated figures. All dimensions are mesured to structural elements. Capital Link reserved the right to make minor modifications without prior notice. Unit floor plan might be mirrored according to its location in the layout.





# *Type B1 - Second floor*

## **Unit P1 - One bedroom**

**Area:** 85.81 m<sup>2</sup>.

**Roof:** 66.66 m<sup>2</sup>.

## **Unit S2 - One bedroom**

**Area:** 80.30 m<sup>2</sup>.

## **Unit P3 - One bedroom**

**Area:** 95.80 m<sup>2</sup>.

**Roof:** 47.51 m<sup>2</sup>.

## **Unit S4 - Studio**

**Area:** 56.20 m<sup>2</sup>.

## **Unit P5 - One bedroom**

**Area:** 87.90 m<sup>2</sup>.

**Roof:** 57.81 m<sup>2</sup>.

### **DISCLAIMER**

All render and visual materials are for illustrative purpose only. actual areas may vary from the stated figures. All dimensions are measured to structural elements. Capital Link reserved the right to make minor modifications without prior notice. Unit floor plan might be mirrored according to its location in the layout.

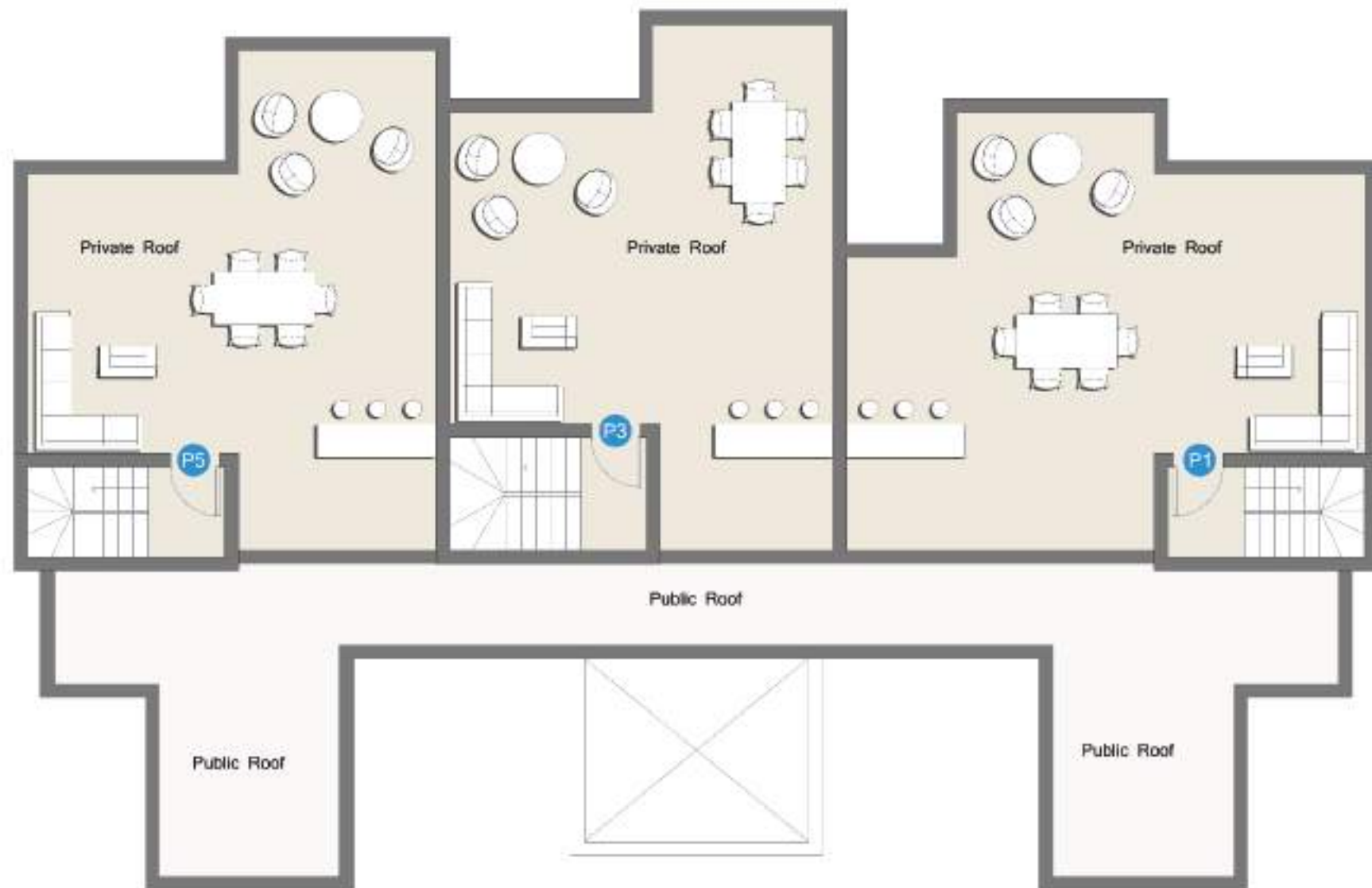




# *Type B1 - Roof floor*

## **DISCLAIMER**

All render and visual materials are for illustrative purpose only. actual areas may vary from the stated figures. All dimensions are measured to structural elements. Capital Link reserved the right to make minor modifications without prior notice. Unit floor plan might be mirrored according to its location in the layout.



# *Type C - Summary*

## **No. of floors : 3**

- Ground Floor
- First Floor
- second Floor

## **No. of units: 2 per floor**

## **Unit type: Three bedroom**

## **Unit area: 150 m<sup>2</sup> to 151 m<sup>2</sup>**

## **Penthouse area: 151 m<sup>2</sup> to 156 m<sup>2</sup>**



**Building Location**

## **DISCLAIMER**

All render and visual materials are for illustrative purpose only, actual areas may vary from the stated figures. All dimensions are measured to structural elements. Capital Link reserved the right to make minor modifications without prior notice. Unit floor plan might be mirrored according to its location in the layout.





# *Type C - Ground floor*

## **Unit G1 - Three bedroom**

**Area**                **150.8 m<sup>2</sup>**

**Garden**           **46.5 m<sup>2</sup>**

## **Unit G2 - Three bedroom**

**Area**                **149.9 m<sup>2</sup>**

**Garden**           **47.2 m<sup>2</sup>**

### **DISCLAIMER**

All render and visual materials are for illustrative purpose only. actual areas may vary from the stated figures. All dimensions are measured to structural elements. Capital Link reserved the right to make minor modifications without prior notice. Unit floor plan might be mirrored according to its location in the layout.





# *Type C - First floor*

## **Unit F1 - Three bedroom**

**Area**                **150.8 m<sup>2</sup>**

## **Unit F2 - Three bedroom**

**Area**                **149.9 m<sup>2</sup>**

### **DISCLAIMER**

All render and visual materials are for illustrative purpose only. actual areas may vary from the stated figures. All dimensions are measured to structural elements. Capital Link reserved the right to make minor modifications without prior notice. Unit floor plan might be mirrored according to its location in the layout.



# *Type C - Second floor*

## **Unit P1 - Two bedroom**

**Area**            **155.6 m<sup>2</sup>**

**Roof terrace**    **92 m<sup>2</sup>**

## **Unit P2 - Two bedroom**

**Area**            **150.6 m<sup>2</sup>**

**Roof terrace**    **92 m<sup>2</sup>**

### **DISCLAIMER**

All render and visual materials are for illustrative purpose only. actual areas may vary from the stated figures. All dimensions are measured to structural elements. Capital Link reserved the right to make minor modifications without prior notice. Unit floor plan might be mirrored according to its location in the layout.

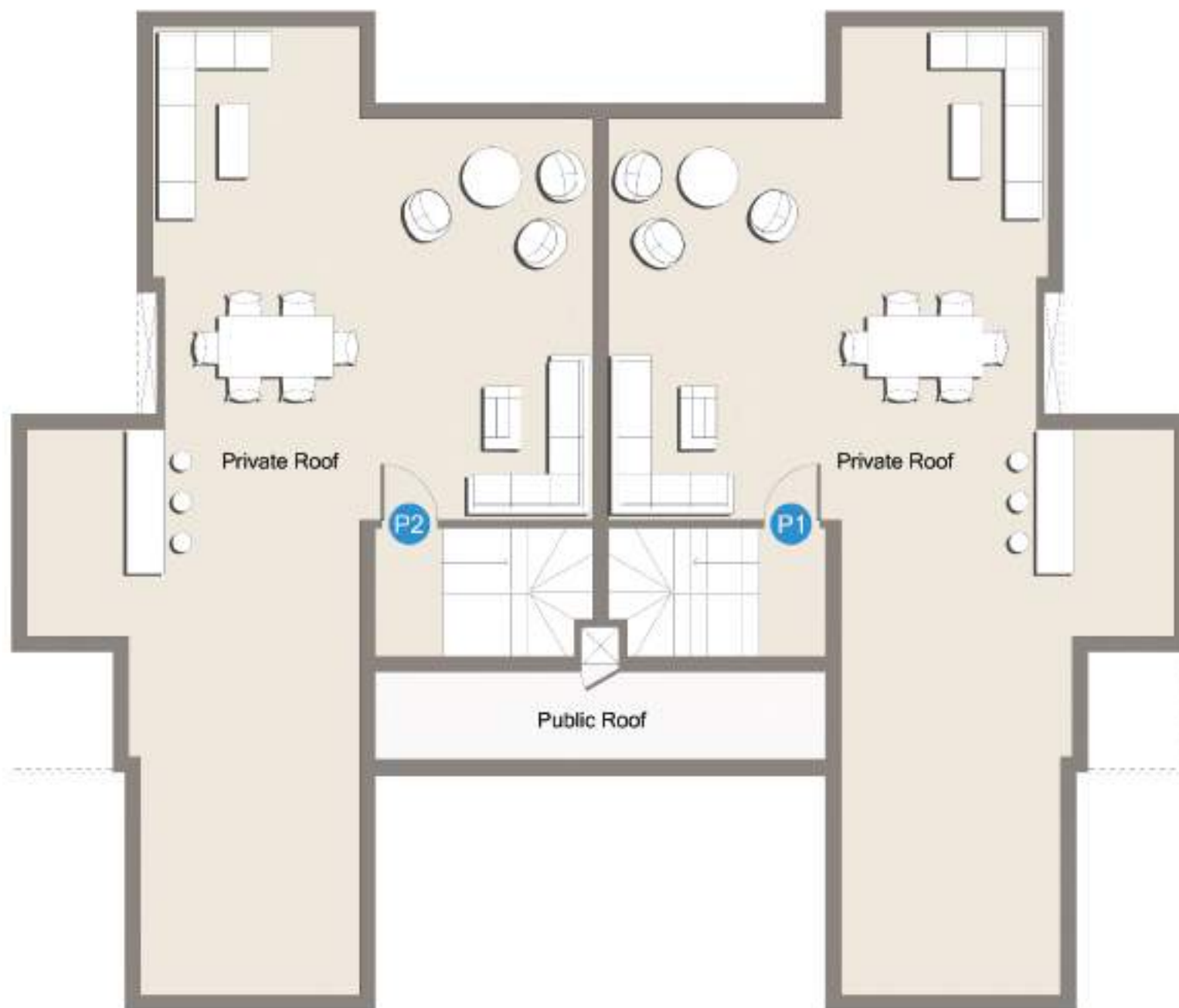




# *Type C - Roof floor*

## **DISCLAIMER**

All render and visual materials are for illustrative purpose only. actual areas may vary from the stated figures. All dimensions are mesured to structural elements. Capital Link reserved the right to make minor modifications without prior notice. Unit floor plan might be mirrored according to its location in the layout.





# *Type F - Summary*

## **No. of floors : 3**

- Entrance Floor
- First Floor
- second Floor

## **No. of units: 5 per floor**

## **Unit type: Studio & One bedroom**

## **Unit area: 55 m<sup>2</sup> to 82 m<sup>2</sup>**

## **Penthouse area: 87 m<sup>2</sup>**



**Building Location**

## **DISCLAIMER**

All render and visual materials are for illustrative purpose only. actual areas may vary from the stated figures. All dimensions are measured to structural elements. Capital Link reserved the right to make minor modifications without prior notice. Unit floor plan might be mirrored according to its location in the layout.





# *Type F - First floor*

## **Unit F1 - One bedroom**

**Area: 82.69 m<sup>2</sup>**

## **Unit F2 - Studio**

**Area: 56.72 m<sup>2</sup>**

## **Unit F3 - Studio**

**Area: 59.60 m<sup>2</sup>**

## **Unit F4 - Studio**

**Area: 55.37 m<sup>2</sup>**

## **Unit F5 - One bedroom**

**Area: 82.68 m<sup>2</sup>**

### **DISCLAIMER**

All render and visual materials are for illustrative purpose only. actual areas may vary from the stated figures. All dimensions are measured to structural elements. Capital Link reserved the right to make minor modifications without prior notice. Unit floor plan might be mirrored according to its location in the layout.





# *Type F - Second floor*

## **Unit P1 - One bedroom**

**Area:** 87.34 m<sup>2</sup>

**Roof:** 77.92 m<sup>2</sup>

## **Unit S2 - Studio**

**Area:** 56.92 m<sup>2</sup>

## **Unit S3 - Studio**

**Area:** 59.60 m<sup>2</sup>

## **Unit S4 - Studio**

**Area:** 55.57 m<sup>2</sup>

## **Unit P5 - One bedroom**

**Area:** 87.43 m<sup>2</sup>

**Roof:** 77.92 m<sup>2</sup>

### **DISCLAIMER**

All render and visual materials are for illustrative purpose only. actual areas may vary from the stated figures. All dimensions are measured to structural elements. Capital Link reserved the right to make minor modifications without prior notice. Unit floor plan might be mirrored according to its location in the layout.

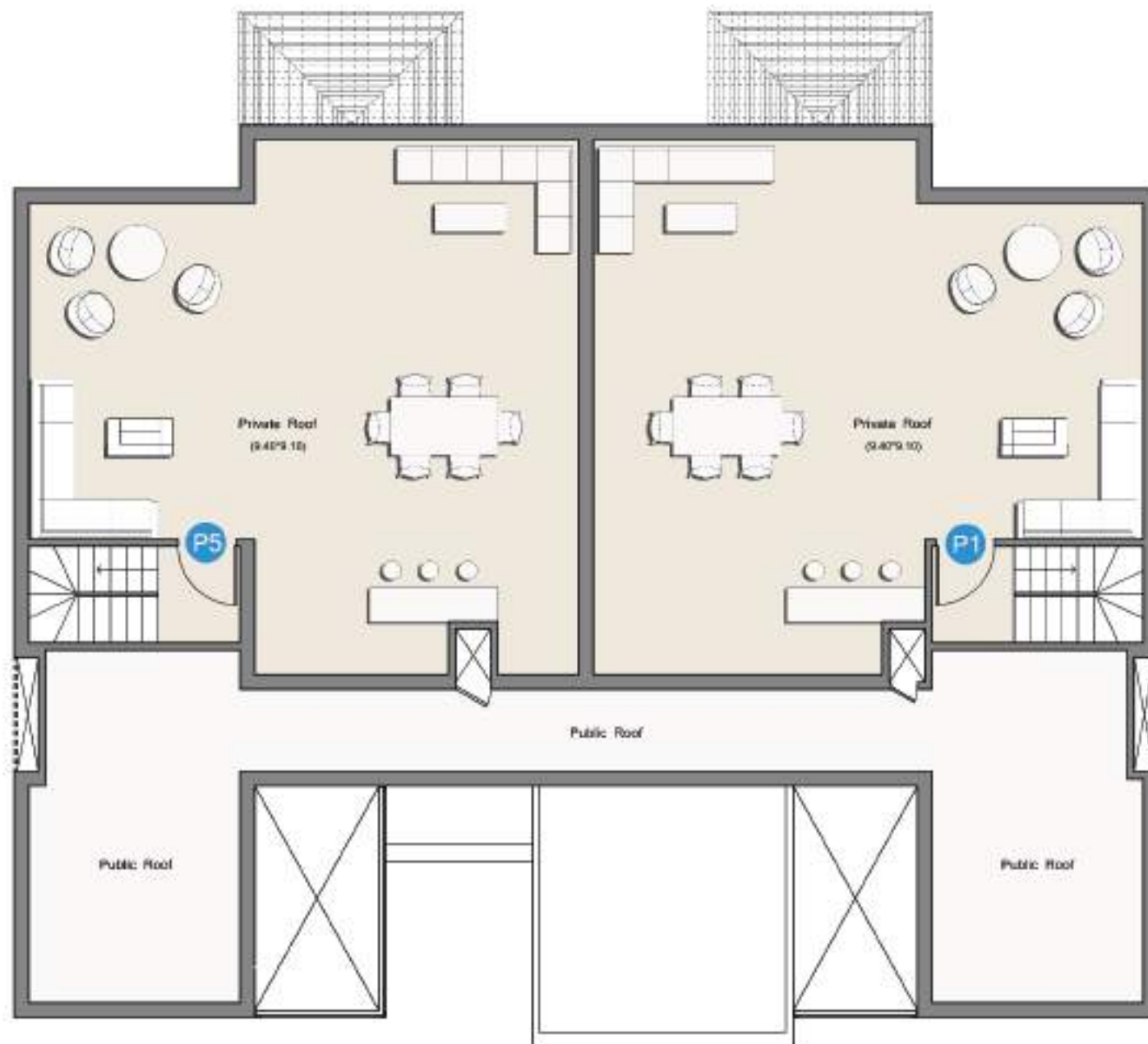


# *Type F - Roof floor*

## **DISCLAIMER**

All render and visual materials are for illustrative purpose only. actual areas may vary from the stated figures. All dimensions are measured to structural elements. Capital Link reserved the right to make minor modifications without prior notice. Unit floor plan might be mirrored according to its location in the layout.





# *Type Gm- Summary*

## **No. of floors : 3**

- Ground Floor
- First Floor
- second Floor

## **No. of units: 6 per floor**

**Unit type: Studio & One bedroom**

**Unit area: 50 m<sup>2</sup> to 89 m<sup>2</sup>**

**Penthouse area: 96 m<sup>2</sup> to 103 m<sup>2</sup>**



**Building Location**

## **DISCLAIMER**

All render and visual materials are for illustrative purpose only. actual areas may vary from the stated figures. All dimensions are measured to structural elements. Capital Link reserved the right to make minor modifications without prior notice. Unit floor plan might be mirrored according to its location in the layout.



