



THE EVESHAM

3 BEDROOM DETACHED HOUSE

A delightful and spacious three bedroom detached family home ideal for couples and families.

The ground floor offers modern open plan kitchen/diner with French doors leading onto the rear garden with patio area for outside entertainment. The bright and spacious lounge features an electric fire with surround as a focal point. There is a downstairs cloakroom for added convenience.

There are three well proportioned bedrooms with the master benefitting from a stylish en-suite. The family bathroom benefits from a separate shower cubicle, fully tiled walls, fitted furniture and heated towel radiator.

The Evesham offers a single garage with power and lighting, block paved driveway and turf to front garden.

HOMES OF QUALITY & STYLE

Get in touch

Head Office: 01522 512200

Email: info@taylorlindseyhomes.co.uk

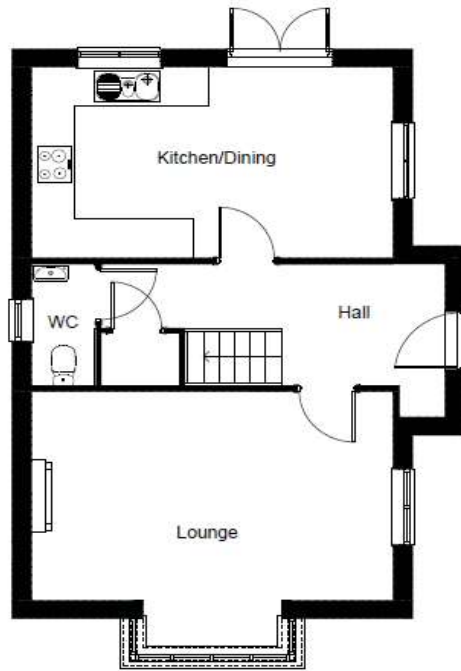
www.taylorlindseyhomes.co.uk

Features include:

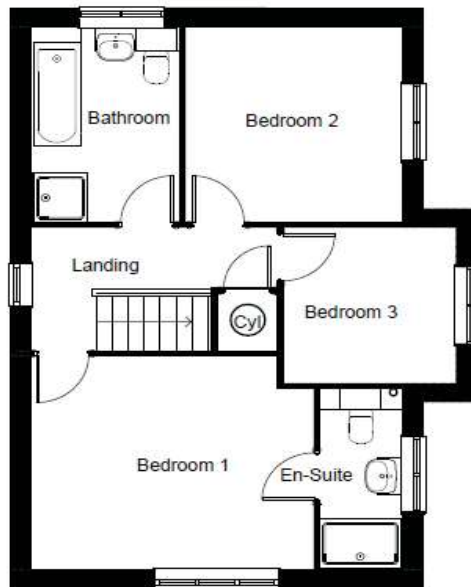
- Designer Kitchen with fully integrated Appliances including Induction Hob, Double Oven, Microwave, Dishwasher, Fridge Freezer and Washer Dryer
- Open Plan Kitchen/Diner with French Doors to Rear Garden
- Porcelanosa Full Wall Tiling to Bathroom & En-Suite, Kitchen Floor and Cloakroom Floor
- Electric Fire & Fire Surround
- Grade A Worcester Bosch Condensing Boiler
- Garage with Block Paved Driveway
- Alarm & Security Lighting
- PVCu Windows and Doors to Secure by Design Standard



GROUND FLOOR



FIRST FLOOR



HOMES OF QUALITY & STYLE

Get in touch

Head Office: 01522 512200
Email: info@taylorlindseyhomes.co.uk
www.taylorlindseyhomes.co.uk

THE EVESHAM

3 Bedroom Detached
Lounge | Kitchen/Dining
Entrance Hall | Cloakroom
Bathroom | Master En-suite | Garage

Ground Floor

| | | |
|--------------------|---------------|---------------|
| Lounge | 17'9" x 13'9" | 5.42m x 4.20m |
| Kitchen/ Dining | 17'9" x 10'3" | 5.42m x 3.12m |

First Floor

| | | |
|-----------|---------------|---------------|
| Bedroom 1 | 13'7" x 11'4" | 4.14m x 3.46m |
| En-suite | 9'8" x 3'11" | 2.94m x 1.21m |
| Bedroom 2 | 10'5" x 10'4" | 3.18m x 3.16m |
| Bedroom 3 | 8'3" x 8'2" | 2.52m x 2.49m |
| Bathroom | 10'4" x 7'1" | 3.16m x 2.17m |

Illustrations and plans are indicative and for guidance only. Architectural details, materials and colours will change from plot to plot. Design changes may be made without prior notice. All dimensions shown on this brochure are approximate and intended for guidance only.

TAYLOR
HOMES
LINDSEY